



Magic Keyboard Teardown

Teardown of the Magic Keyboard on October 15, 2015.

Written By: Sam Goldheart



INTRODUCTION

Apple just released their new Magic Keyboard amidst a slew of new accessories and some [shiny new iMacs](#). This "magical" new Apple accessory has garnered some buzz for its rechargeable battery, instant pairing, and new key mechanism, but how will it fare in terms of repairability? We're eager to find out, so it's time to join the fun with the best magic trick we know. [Alohomora!](#) It's teardown time!

Looking for the rest of the 2015 *Maccessory* lineup? Check out the [Magic Mouse 2](#) and [Magic Trackpad 2](#) teardowns!

Do you want to be part of the magic? Find us on [Twitter](#), [Instagram](#), or [Facebook](#) for more tech news.

[video: <https://www.youtube.com/watch?v=801l3oz3fls>]

TOOLS:

- [Tweezers](#) (1)
 - [iOpener](#) (1)
 - [Curved Razor Blade](#) (1)
 - [iFixit Opening Picks set of 6](#) (1)
 - [Spudger](#) (1)
 - [T3 Torx Screwdriver](#) (1)
-

Step 1 — Magic Keyboard Teardown

Magic Keyboard



TEARDOWN

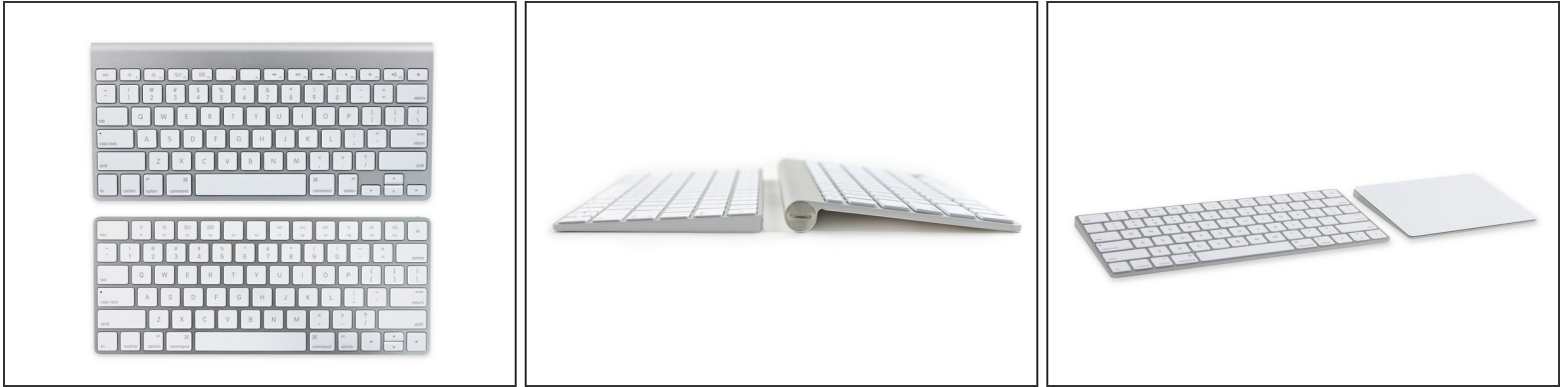
- Before the plastic bits start flying, lets take a peek at the spec sheet:
 - Dimensions: 0.43" × 10.89" × 4.52"
 - Bluetooth wireless connectivity
 - Internal lithium-ion battery
 - Lightning port (for charging and pairing)

Step 2



- Flipping over the new keyboard, we find a magical, new model number: A1644.
- And a Lightning port! If you just felt a soft breeze, it may have been from millions of television remotes sighing in relief; no more stealing batteries for your keyboard!
- ⓘ The Lightning port serves two purposes—quick and easy (magic?) pairing to your Mac over a cable, and recharging the integrated battery.

Step 3



- Comparison time! Let's take a look at how the Magic Keyboard stacks up against the 3rd generation Wireless Keyboard.
 - The new keyboard adopts the slightly revised layout of the [2015 MacBook](#) keyboard—including "full-size" left and right arrow keys, and function keys.
 - Switching to an internal battery means Apple engineers got to ditch the battery tube, giving the keyboard a lower profile. This should be good practice for typing on our new iPad Pro Smart Keyboard!
- ⓘ Looking for that slick, streamlined desk? The Magic Keyboard matches the Magic Trackpad 2, too, with similar slim profiles. For more on that, head over to our [Magic Trackpad 2 teardown!](#)

Step 4



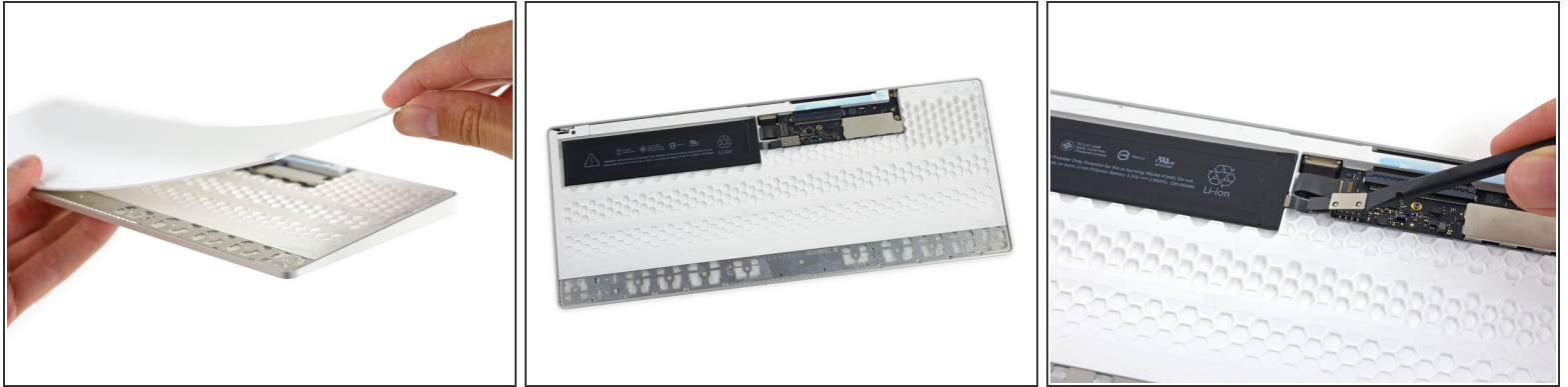
- This looks like a good place to start. Manufacturers often hide screws under rubber feet to get that clean unbroken underbody look.
- Tweezing out a rubber foot reveals a slot that holds the foot in place. Almost a screw! But not. This is just some molded plastic.
- Thanks to a complete lack of fastener or seam, it's time to open some eyes with an [iOpener](#).

Step 5



- The gap between the plastic bottom and aluminum frame is too thin even for our opening picks—so instead we put our [Apple Watch Opening tool](#) to work, hoping for some prying purchase.
- Once we get enough of a gap opened up, we sheath our knife and switch to plastic. [Plastic Opening Picks](#), that is.
- ⓘ The entire lower panel is glued in place, so we make a heat-and-pry-and-repeat parfait. Delicious. But arduous for repair.

Step 6



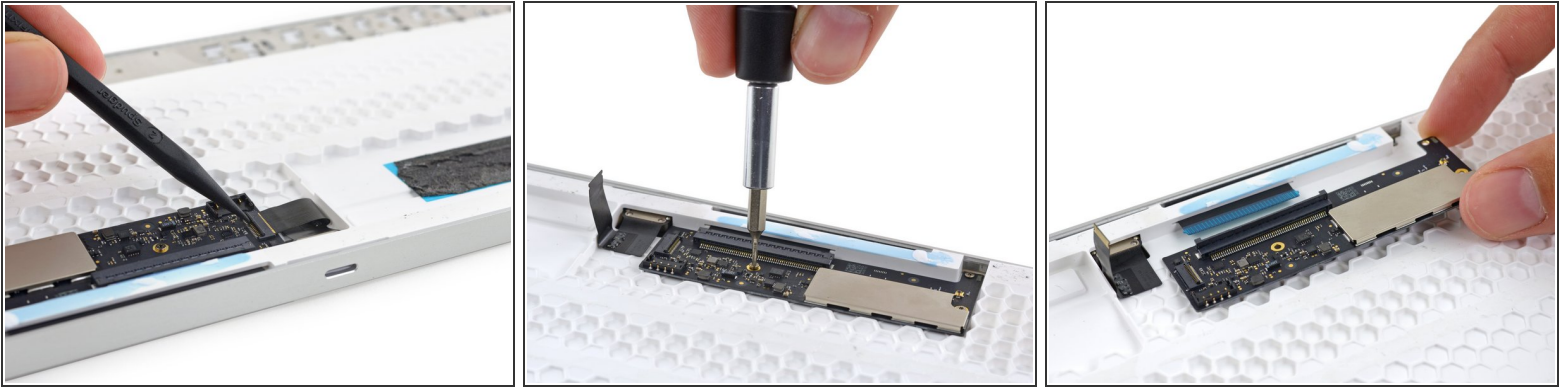
- With enough of the rear panel pried up to get a handle on it, we can peel it right off the back, after some struggles.
- Underneath we find our first components—the logic board and rechargeable battery. And another layer of adhesive laden plastic.
- The battery is a snap to disconnect—no solder here, so Apple intends for it to be at least *somewhat* replaceable.
- Did someone glue an [iPhone battery](#) in here?
 - Okay, not really. This battery has different dimensions than an iPhone battery, but it shares some similar design concepts. Unfortunately, those [nifty adhesive strips](#) are *not* one of them.

Step 7



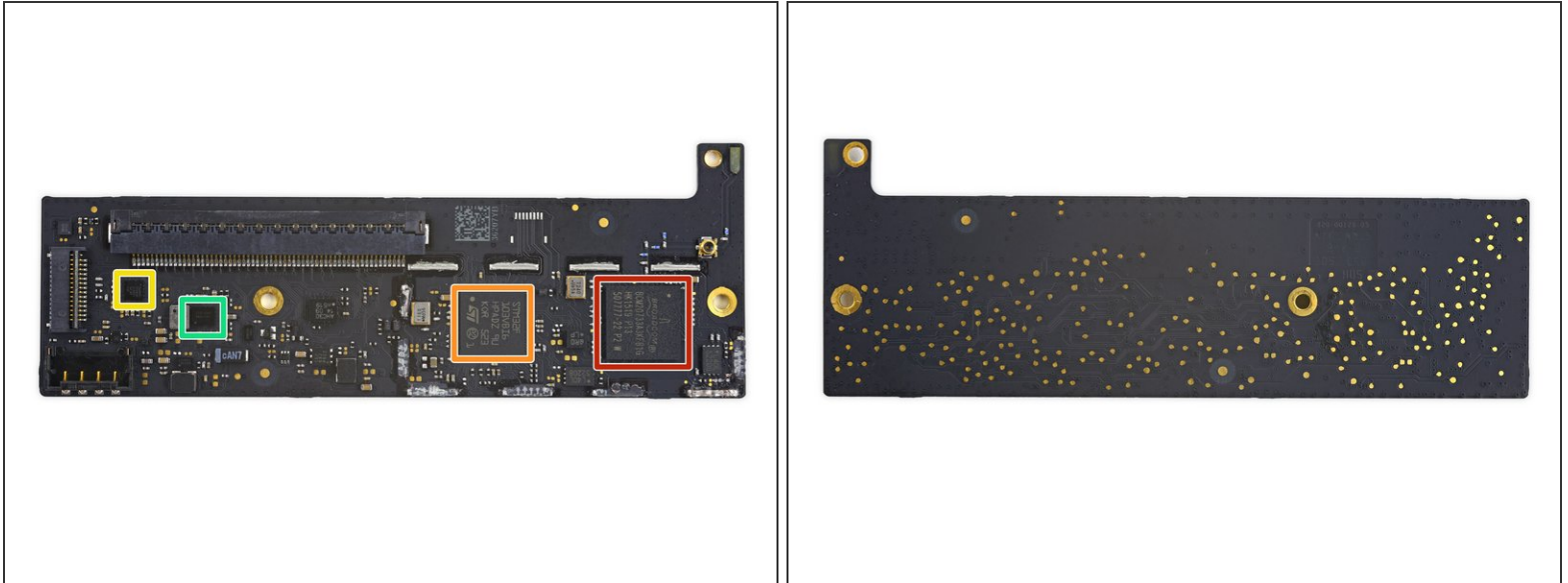
- Without those peel-out adhesive strips, more vigorous prying and picking are required to free the battery.
- The 2.98 Wh battery has less than half the capacity of the 6.55 Wh battery in the [iPhone 6s](#). But with less to do the battery should last for months on a single charge.
- ⓘ Since rechargeable batteries eliminate disposable battery waste, Apple proudly calls this keyboard (as well as the [Trackpad](#), and [Mouse](#)) more environmentally friendly.
 - That may be true, but it's important to note that *all* non-replaceable batteries limit device lifespans, eliminate users' options to use removable and rechargeable batteries, and greatly hinder end of life recycling.

Step 8



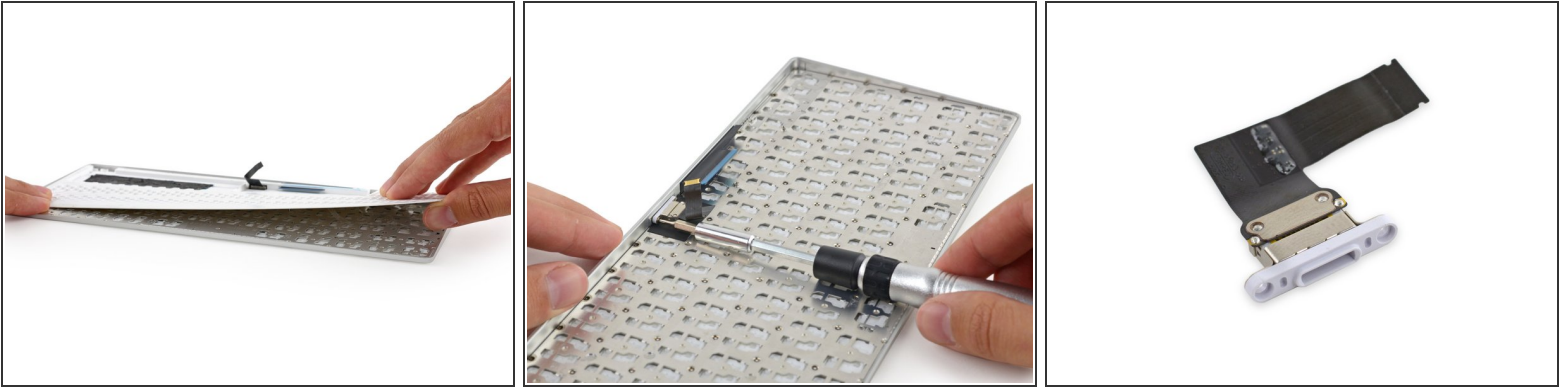
- We disconnect a promising Lightning connector cable, and although it's not [a soldered tangle](#), the port refuses to budge.
- All that stands in our way are a couple T3 screws, and then the (tiny!) logic board is free!
- ⓘ No pentalobes? Thanks, Apple! Apparently they weren't expecting us to get past that gnarly glue.

Step 9



- A quick peek at the logic board reveals a dusting of silicon we can't wait to get a closer look at. Notable hardware includes:
 - Broadcom [BCM20733](#) Enhanced Data Rate Bluetooth 3.0 Single-Chip Solution
 - ST Microelectronics [STM32F103VB](#) 72 MHz 32-bit RISC [ARM Cortex-M3](#)
 - NXP [1608A1](#) Charging IC
 - Texas Instruments [BQ24250C](#) Single Input I2C/Standalone Switch-Mode Li-Ion Battery Charger

Step 10



- Another layer [bites the dust!](#)
- This honeycombed spacer layer is *sandwiched* in glue, giving the keyboard strength to stand up against even the most... [enthusiastic typists](#).
- The Lightning port is finally, after a couple screws, free.
 - ⓘ At least a port replacement is *possible*, if utterly frustrating.

Step 11



- Hats Keycaps off to this teardown!
- Spoiler alert: no butterfly keys in this net, just Apple's fancy new scissor mechanism.
- ⓘ At first glance this looks like the same mechanism found in the [2015 MacBook](#).
 - However, according to Apple, they've actually [reengineered the scissor mechanism](#) to increase stability and improve key travel. By our best measurements, the new design offers a whopping 1 mm travel distance and *totally flat keypresses*—or something.
- 📌 Looks like desktop users will have to wait for the Magic Keyboard 2 for the butterfly effect key.

Step 12



REPAIRABILITY SCORE:



- The Magic Keyboard Repairability Score: **3 out of 10** (10 is easiest to repair)
 - The Lightning port and battery can be replaced independently of the logic board—if you can get the device open.
 - While fragile, the keycaps are removable and replaceable.
 - Excessive use of strong adhesive makes it very difficult to remove the rear panel, hindering access to every internal component.
 - Without a service manual, it is difficult to open the keyboard without damaging internal components.