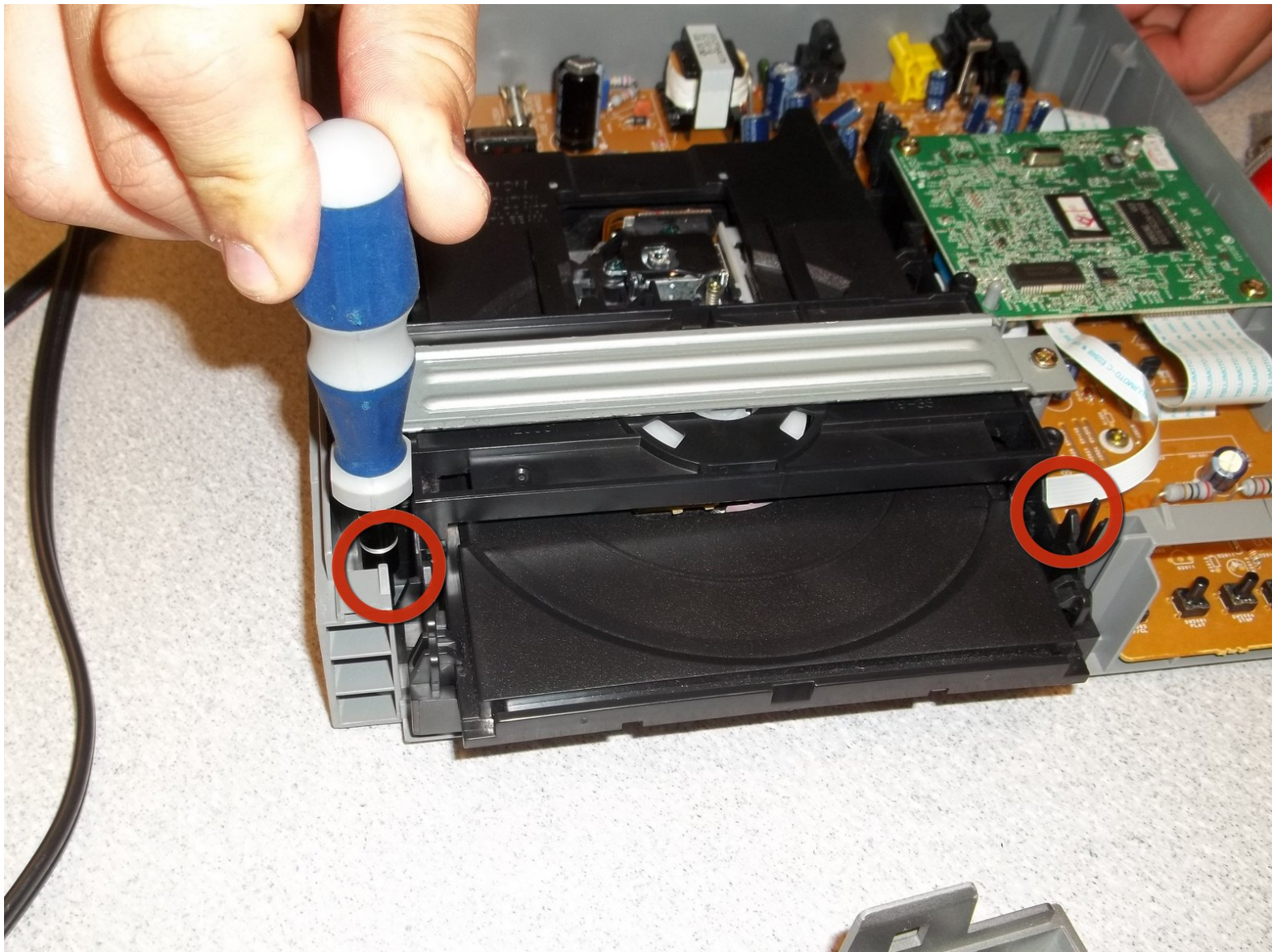




# Magnavox MWD200F Disk drive replacement

This guide will instruct you to remove the disc drive for replacement, repair or cleaning.

Written By: Taryn





## TOOLS:

- [Phillips #2 Screwdriver](#) (1)
-

## Step 1 — How to remove Magnavox MWD200F cover



- Using a Philips screwdriver, remove the two screws on the top of the device, towards the back.

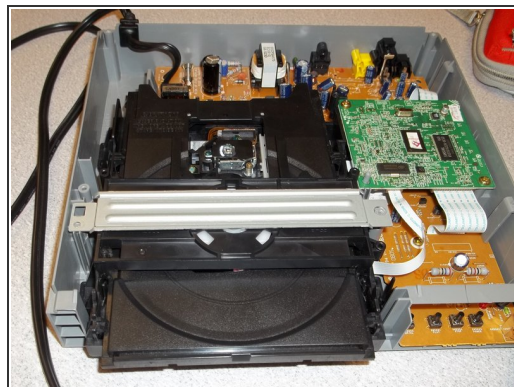
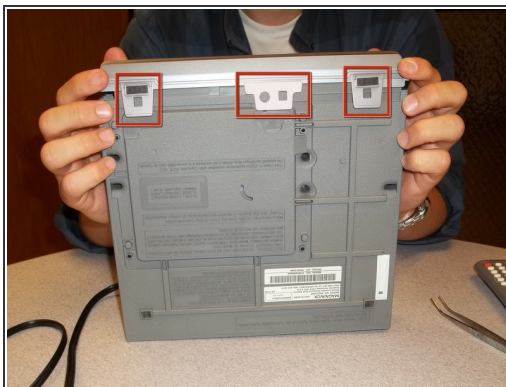
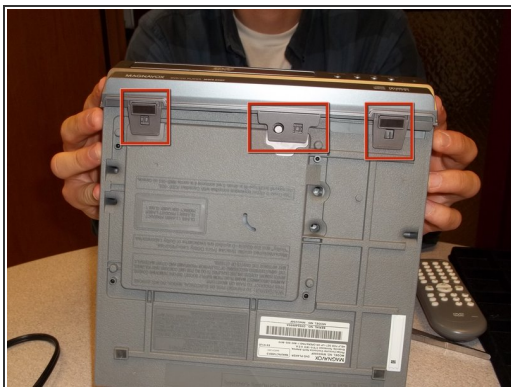
## Step 2



- Remove the plastic cover by pulling up on the back and away from the faceplate.

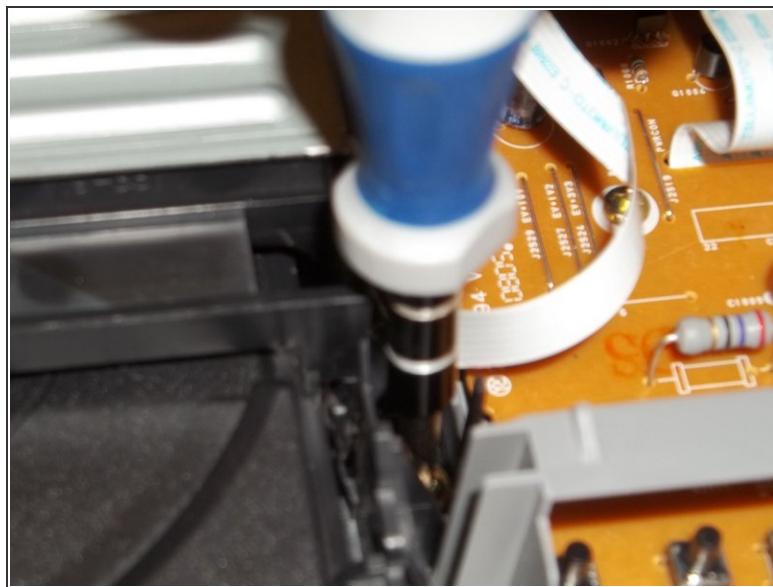
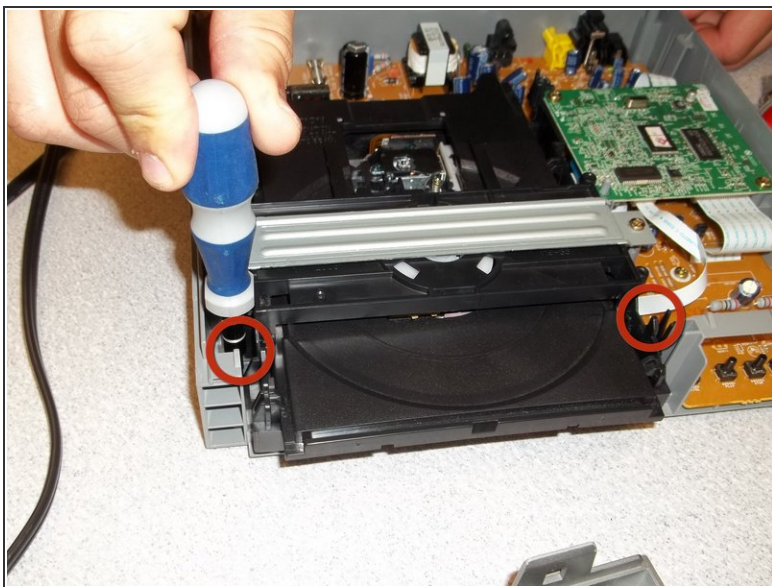


## Step 3



- Remove the faceplate by unclipping the latches on the bottom of the device.
- Once it's unlatched, pull the faceplate off.

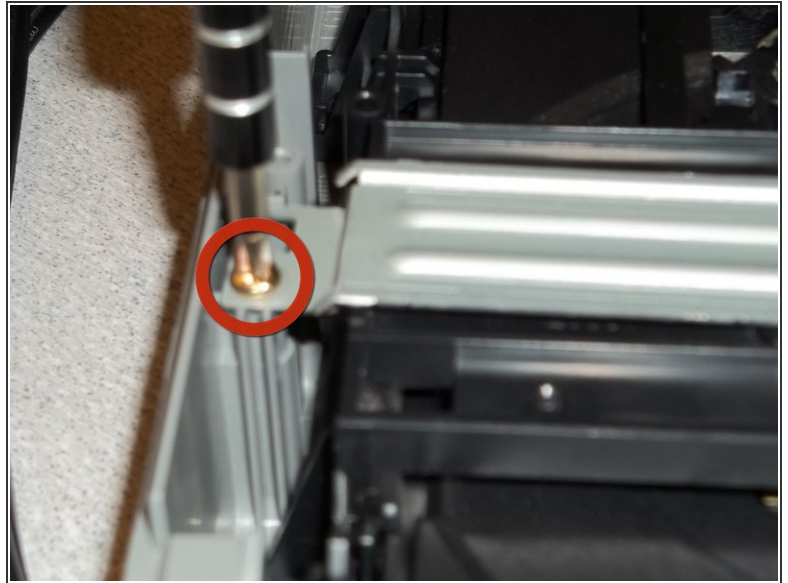
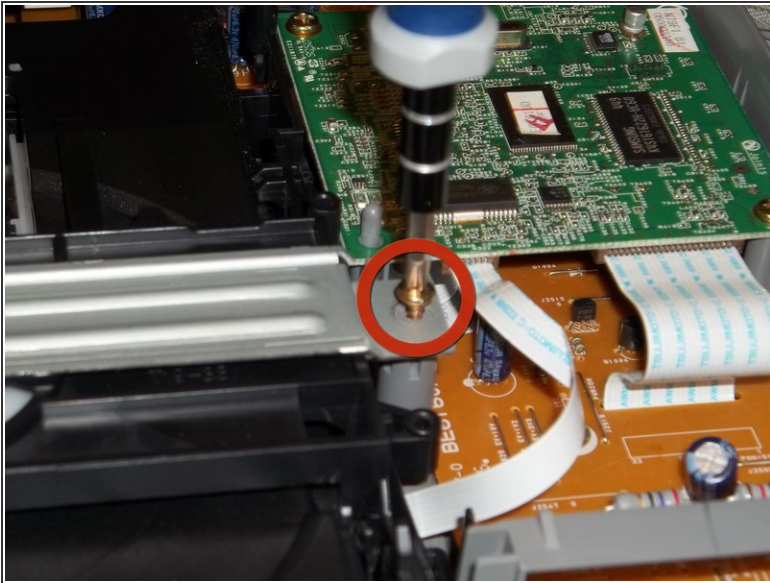
## Step 4 — disk drive



- Using your philips screwdriver, remove the two screws at the base of the disc drive. (See image)

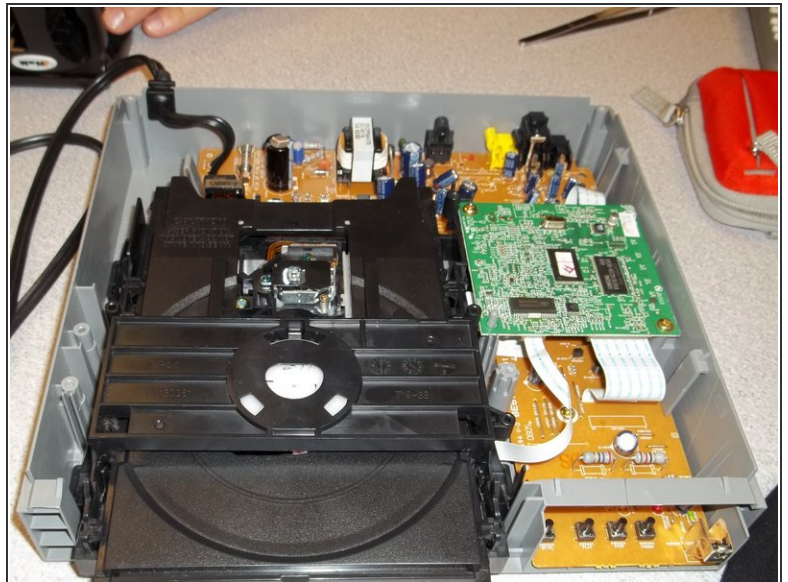
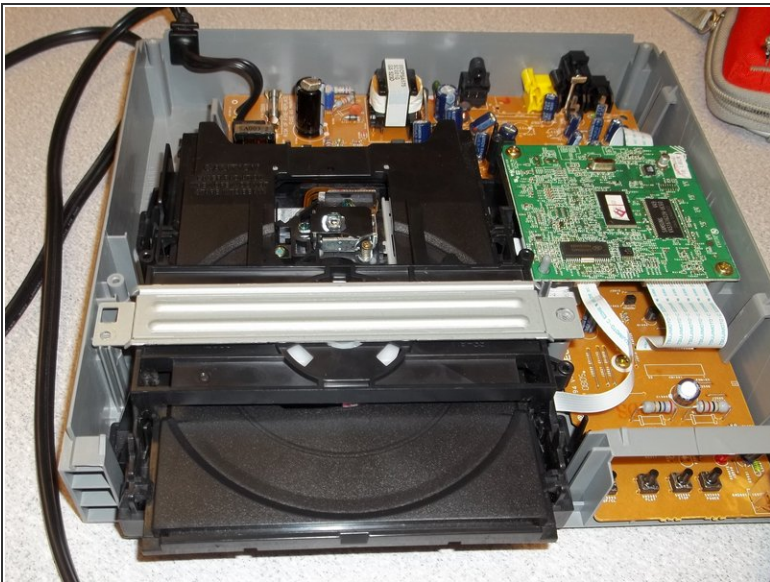


## Step 5



- Remove the two screws on either side of the silver security bar.

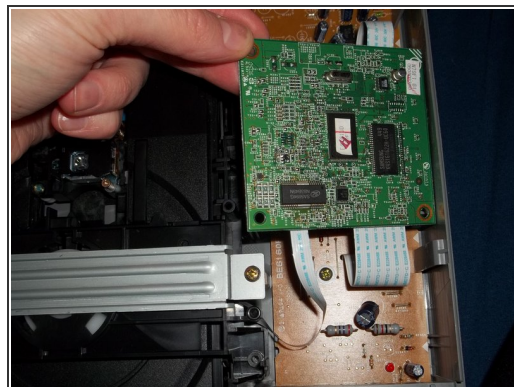
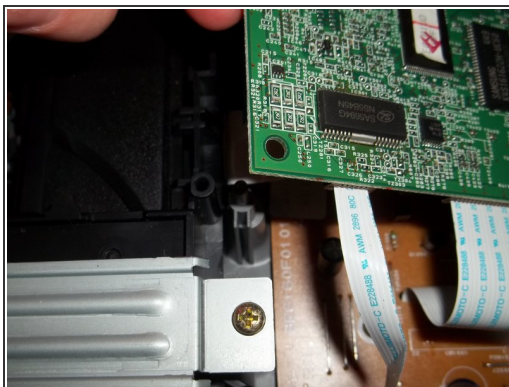
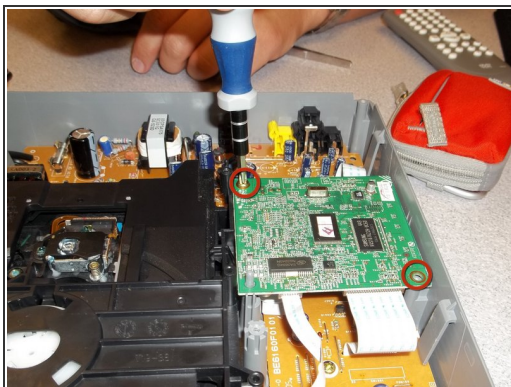
## Step 6



- Remove the silver security bar and set aside.

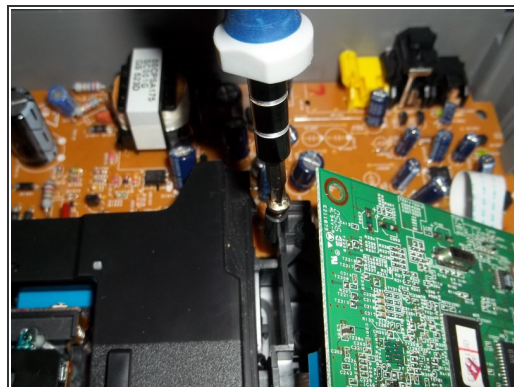
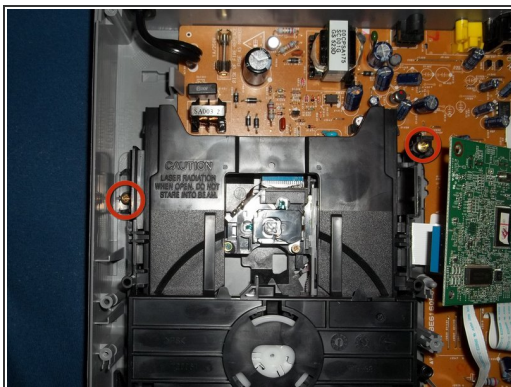


## Step 7



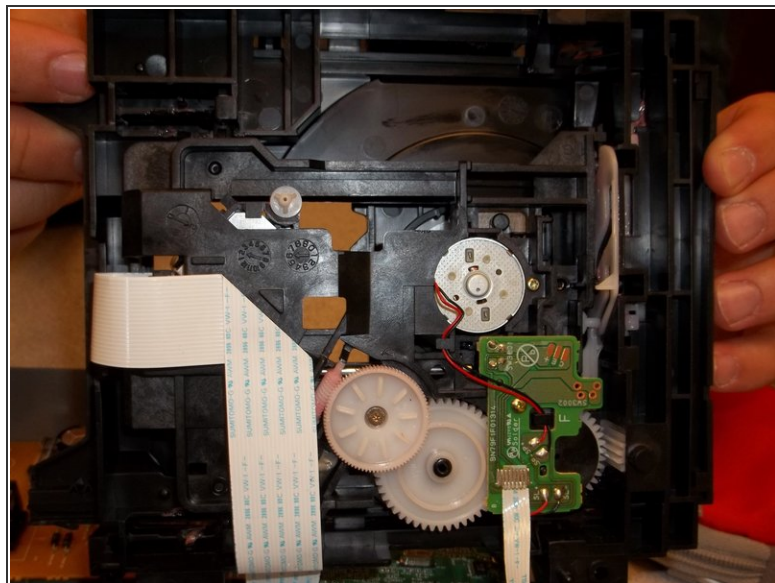
- Remove the two screws on either side of the green circuit-board as seen in the photos. Once the screws are removed, gently lift the board so you can remove the disc drive. **BE CAREFUL!** The board is still attached to the base of the DVD player. You just need to lift it enough to pull the disc drive out.

## Step 8



- Remove the two screws at the back of the disc drive.

## Step 9



- You can now gently lift the disc drive out of the the DVD player. BE CAREFUL! The disc drive is still attached but you are now able to get to underneath it for cleaning and maintenance.

To reassemble your device, follow these instructions in reverse order.