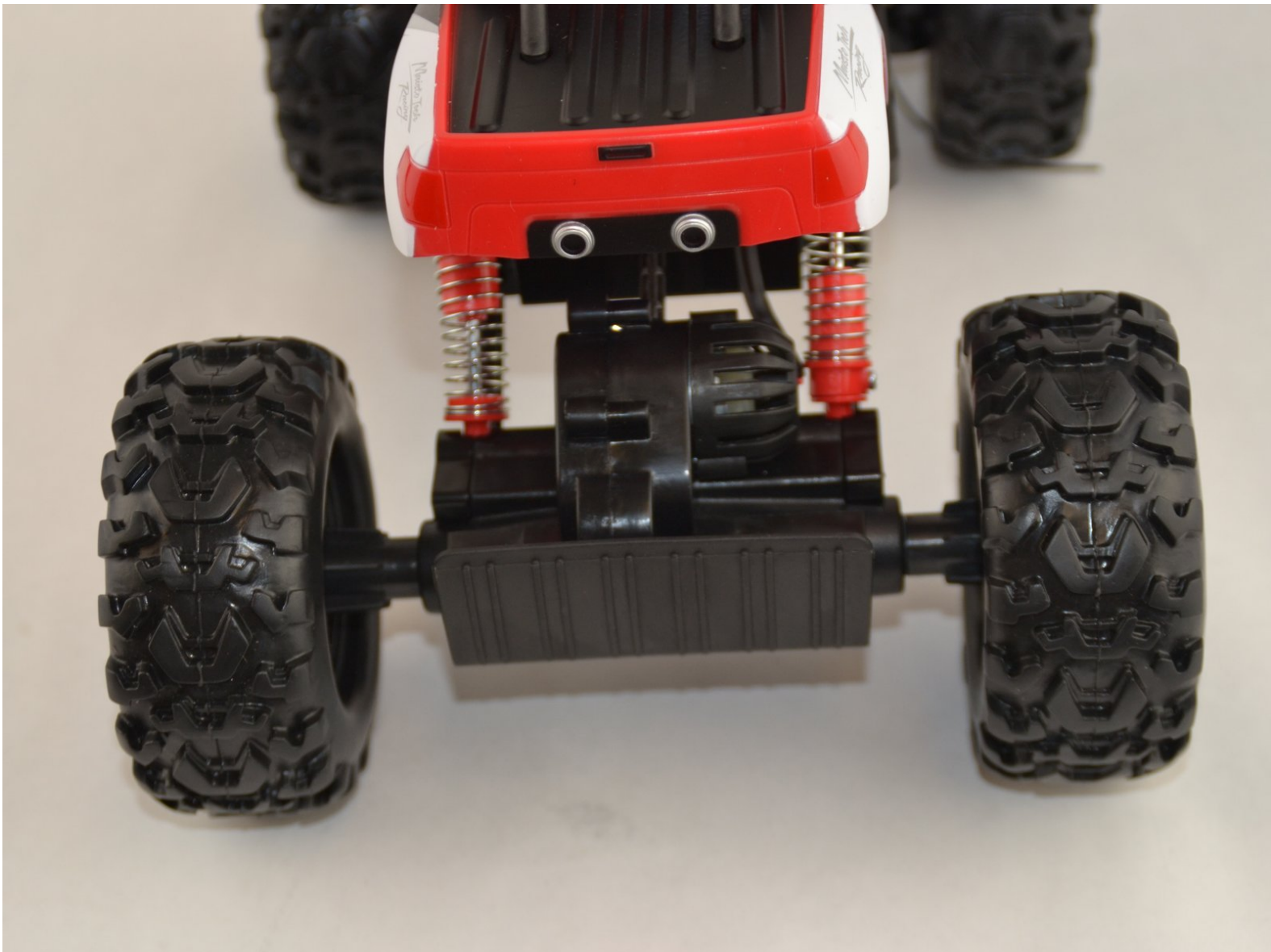




# Maisto Rock Crawler Rear Axle Replacement

Use this guide to replace the rear axle in your Maisto Rock Crawler

Written By: kevin



# INTRODUCTION

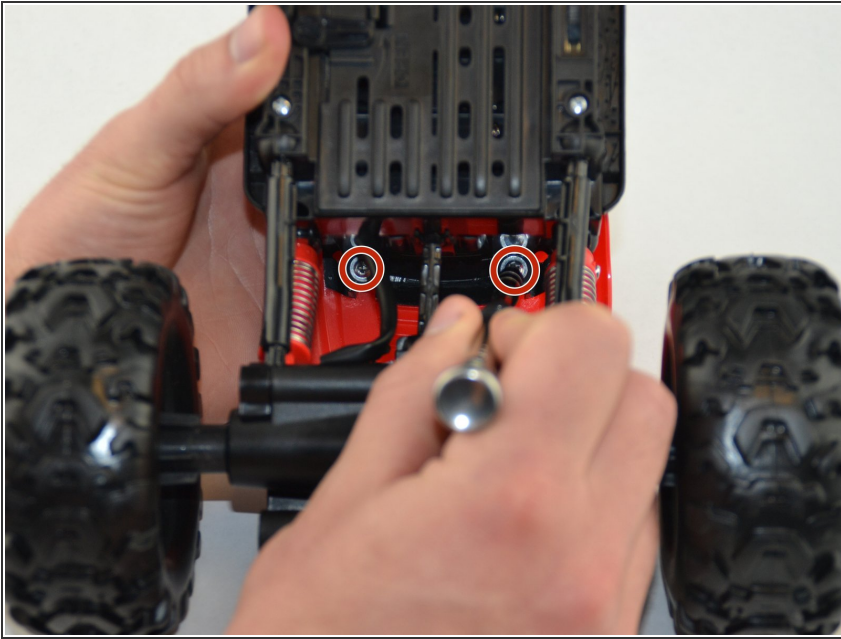
This guide will walk you through the process of replacing the rear axle in a Maisto Rock Crawler.



## TOOLS:

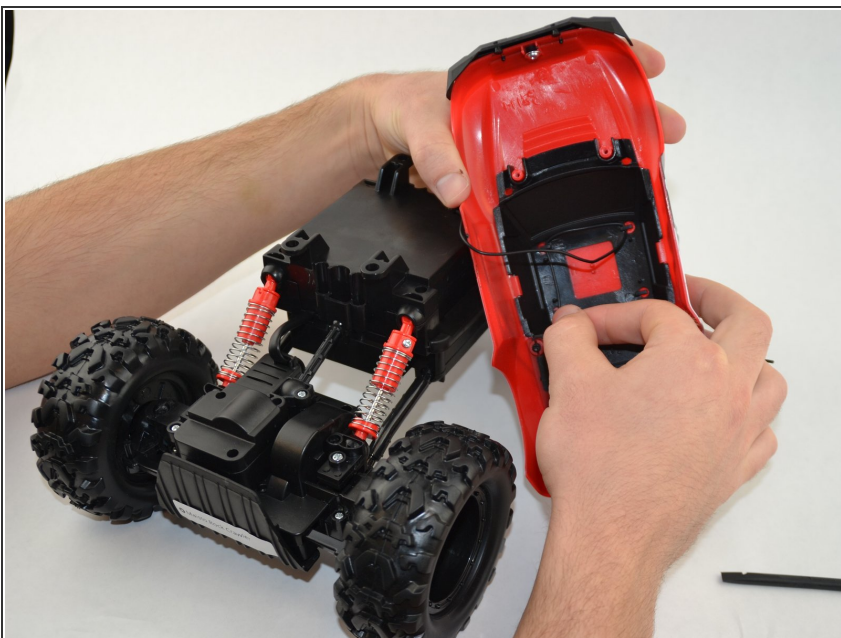
- [Soldering Iron](#) (1)
  - [Phillips #2 Screwdriver](#) (1)
  - [JIS Driver Set](#) (1)
-

## Step 1 — Rear Axle



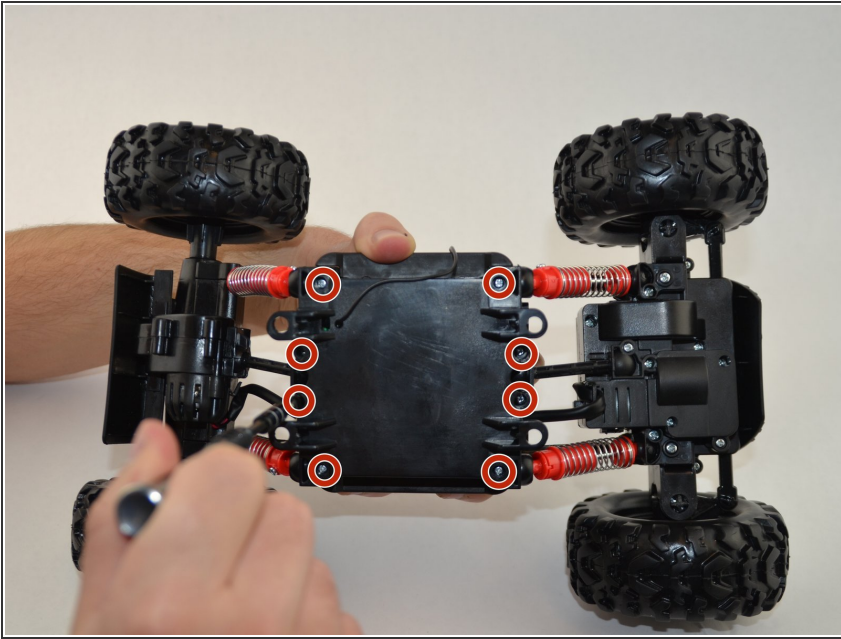
- Flip the R/C truck over.
- To take off the R/C truck top, use the driver and bit PH2 and remove the four 7.7 mm Phillips screws highlighted.

## Step 2



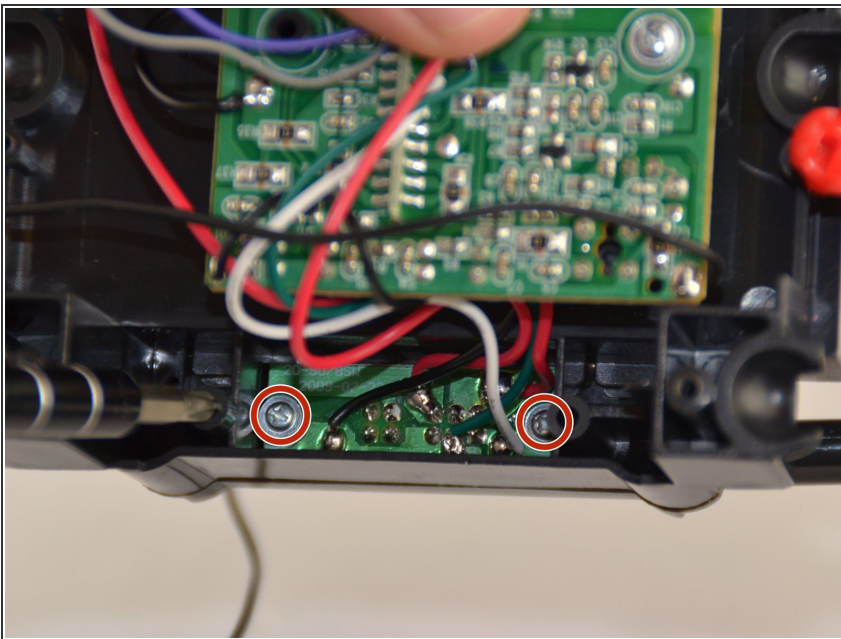
- Half way remove the truck top so you can unhinge the antenna from the clips.
- Remove the R/C truck top completely.

### Step 3



- Use the Driver and bit J1 to remove the top under-body plate by unscrewing the eight 9.5 mm Phillips screws.

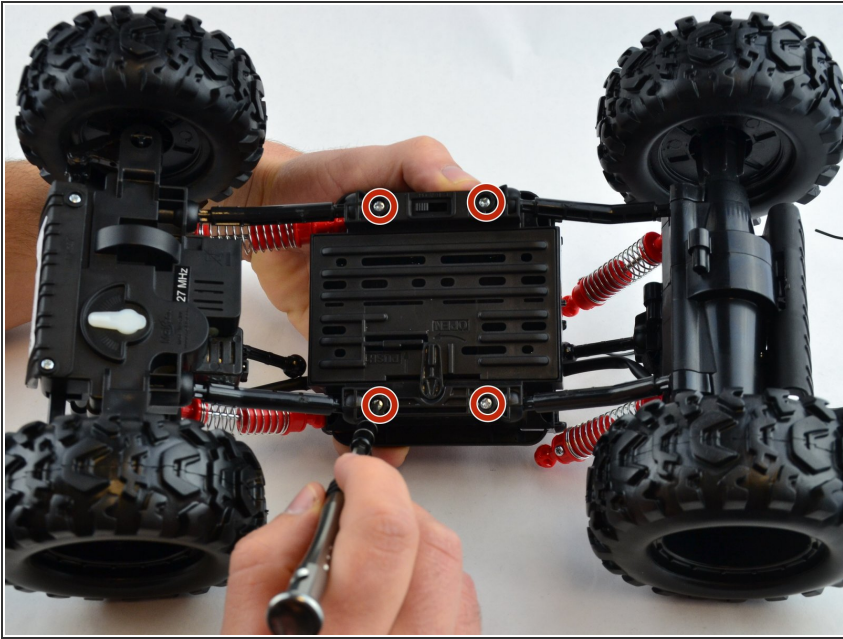
### Step 4



- After removing the plate use the driver and bit J1 to unscrew the two 9.5 mm Phillips screws that hold the side circuit board in.

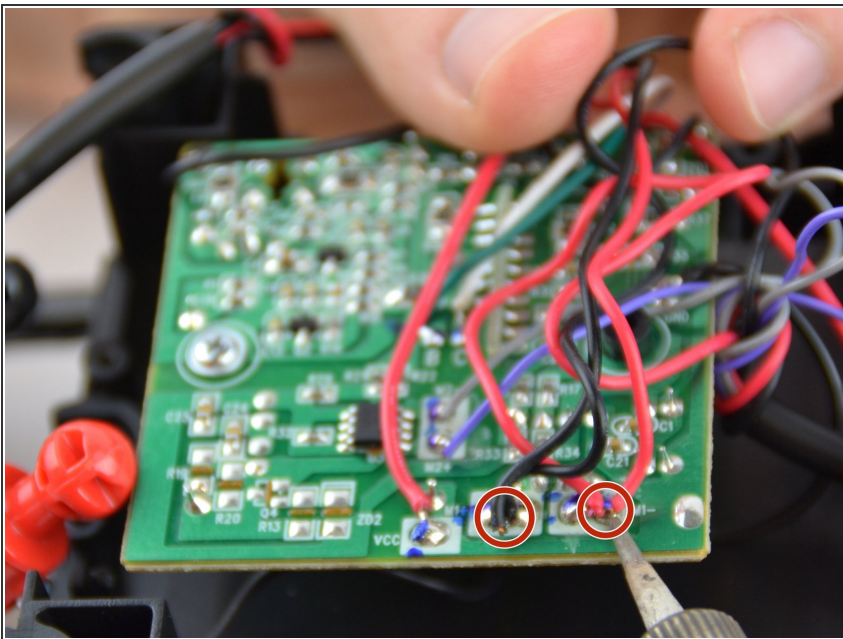


## Step 5



- Flip the R/C truck over and remove the four 10 mm bottom under-body plate screws using the driver and bit PH2.

## Step 6



- Flip the R/C truck over again.
- ⚠ Remember which wire is connected at which pin before desoldering.
- ⚠ Desolder the 2 wires connected from the rear axle to the circuit board.

## Step 7



- You can refer to the tire replacement guide to keep salvageable tires from the removed axle.

To reassemble your device, follow these instructions in reverse order.