



# Makita DT01 Motor Replacement

Replace the motor on your Makita DT01 if it is faulty.

Written By: Haseeb Ur Rehman



---

## INTRODUCTION

If your motor produces little torque or is dead, this guide will show you how to replace the part.

---



### TOOLS:

- [JIS Driver Set](#) (1)
  - [Tweezers](#) (1)
-

## Step 1 — Motor



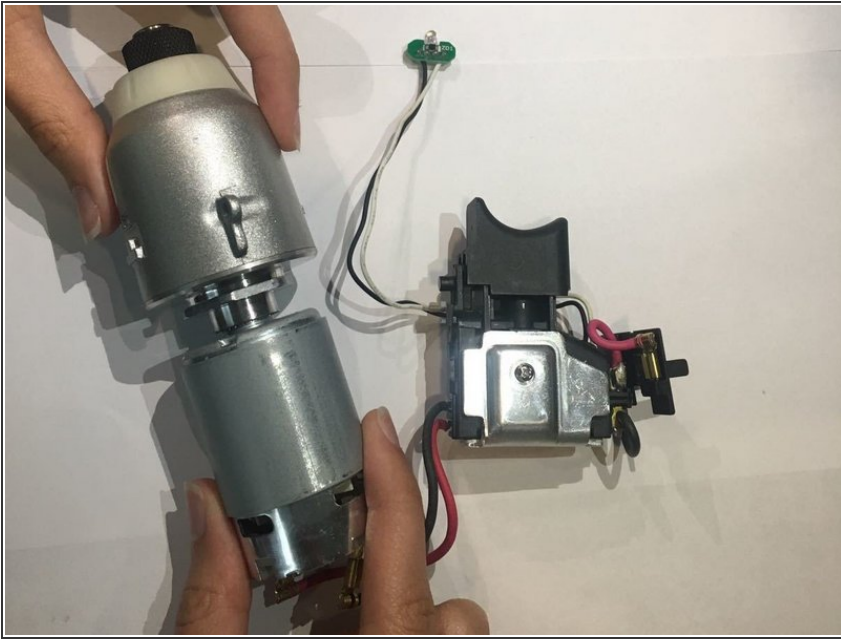
- Place your fingers on the grip to pull out the battery from the device.

## Step 2



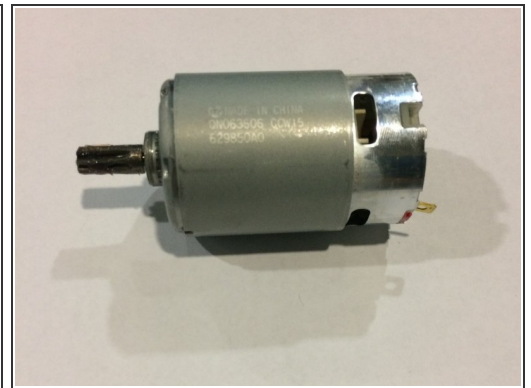
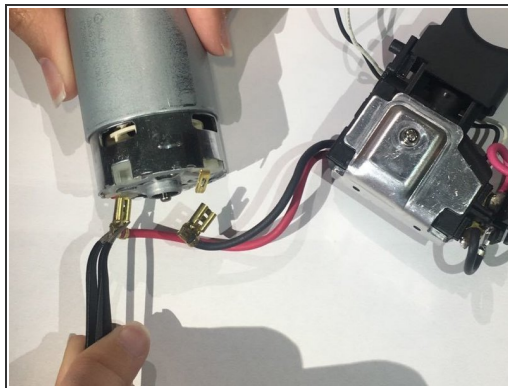
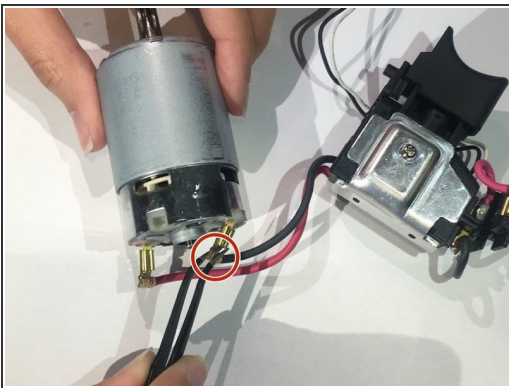
- Unscrew the device using the driver from the JIS kit.
- Use the part J1 as the Screw driver tip.
- There are 6 screws and each have a 15 mm Phillips-head.

### Step 3



- Pull both ends of the device to separate the motor from the rest of the device.

### Step 4



- Use the tweezers to disconnect both the wires connected to the motor.

To reassemble your device, follow these instructions in reverse order.