



Makita GA4030K Armature Replacement

The armature is the spinning component of the electric motor.

Written By: Laura Ann Jagels



INTRODUCTION

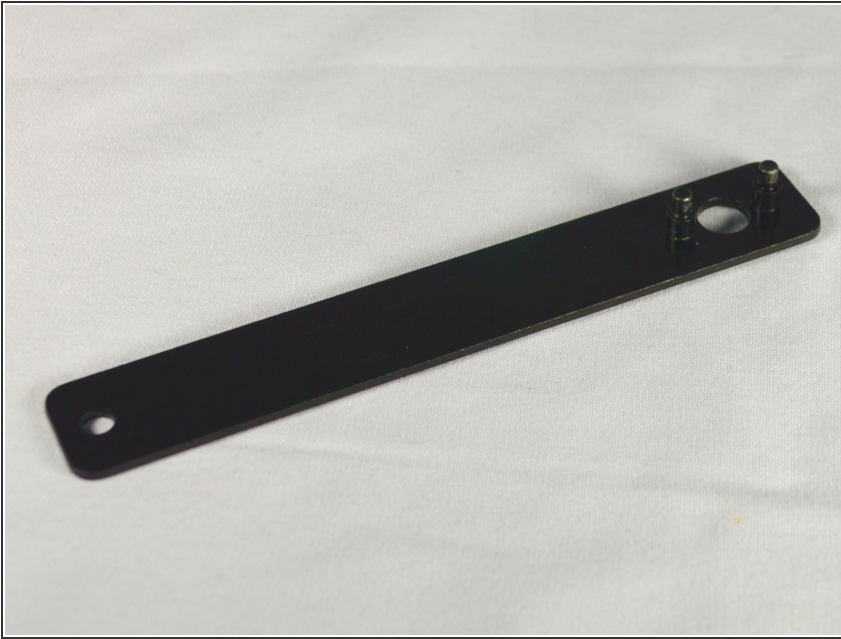
This is a guide detailing the steps to replace the armature.



TOOLS:

- [Wrench size 10](#) (1)
 - [Metal Spudger](#) (1)
 - [Phillips #2 Screwdriver](#) (1)
-

Step 1 — Disk Cover



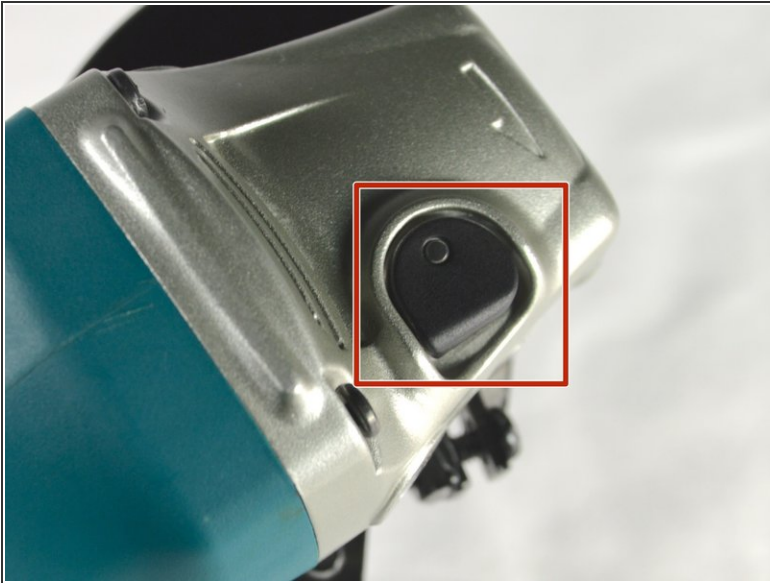
- Check for the provided lock nut wrench. This is used for loosening the piece that keeps the disk and cover attached.

Step 2



- Unscrew the handle unit until it is removed completely.

Step 3



- Hold the black switch located on the front casing.
- Still holding the switch, use the lock nut wrench to loosen the silver disk holding everything in place.
 - Once loose, remove the silver disk and/or your grinding disk.

Step 4



- Use a Phillips #02 screwdriver to remove the 15 mm pan head screw that holds the cover in place.
- Remove the cover by lining up the knob on the cover with the notch in face plate.

Step 5 — Back Cover



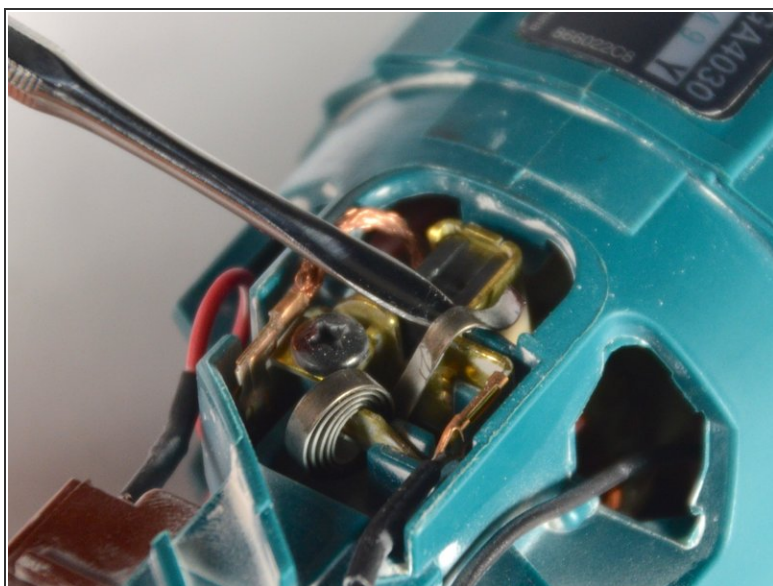
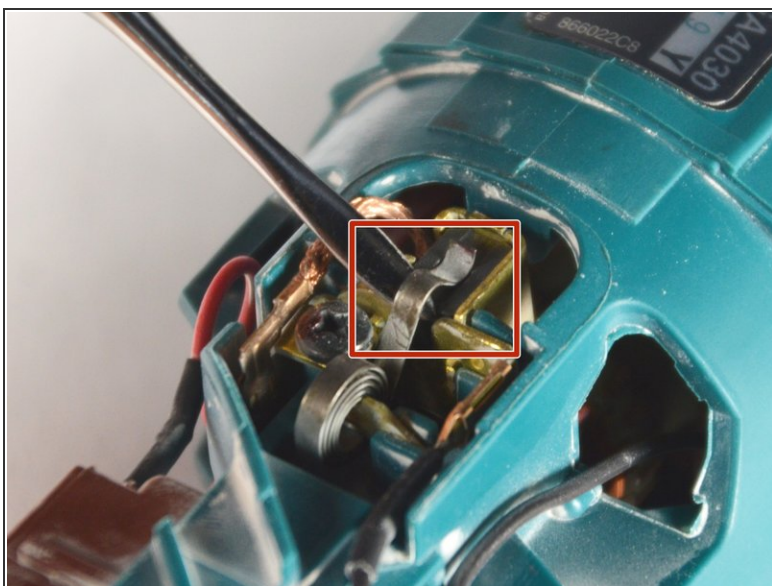
- Unscrew the 20 mm tapping screw using a Philips #02 screwdriver.

Step 6



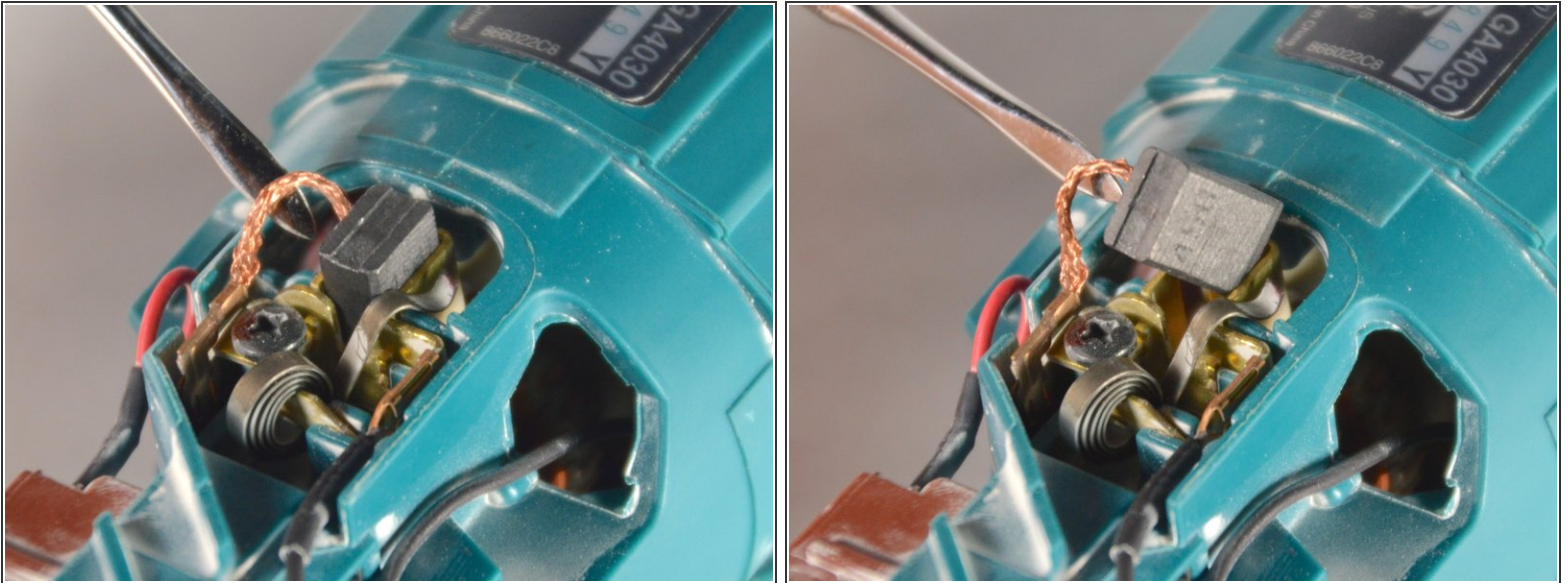
- Slide the back cover down the power cable.

Step 7 — Armature



- Use a spudger to gently move the brush holder coil to the side.
- ⓘ There are two brushes that are secured by two separate brush holders, one on each side.

Step 8



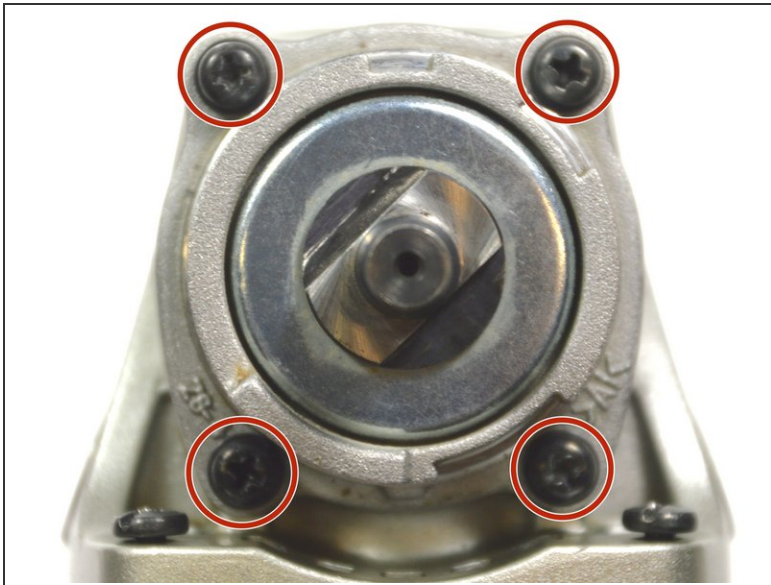
- Using a metal spudger, remove both carbon brushes (one on each side) by their copper cabling.

Step 9



- Use a Phillips #2 screwdriver to remove the four 20 mm tapping screws that hold the armature assembly in place.
- Remove the armature assembly

Step 10



- Unscrew the four 10 mm tapping screws holding the faceplate using a Phillips #02 screwdriver.
- Remove the faceplate.

Step 11



- Hold the highlighted nut with a size 10 wrench. Unscrew by turning the armature and holding the nut in place.
- ⓘ The nut may be difficult to remove.

This document was generated on 2019-09-26 03:39:05 PM (MST).

Step 12



- Remove the armature.

To reassemble your device, follow these instructions in reverse order.