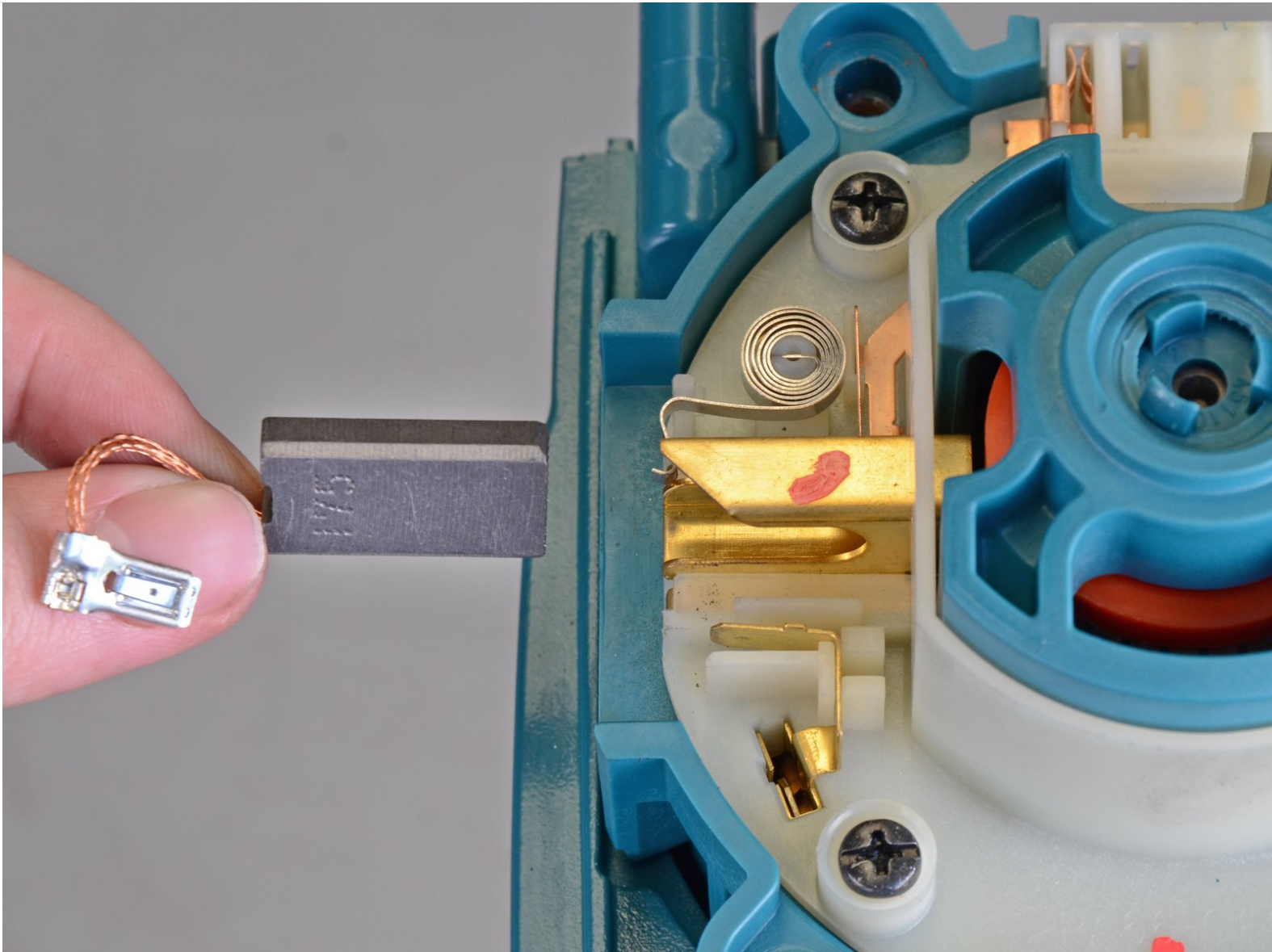




Makita Jack Hammer HM1307CB Brush Replacement

Use this guide to replace the carbon brushes in a Makita HM1307CB jack hammer.

Written By: Taylor Dixon



INTRODUCTION

This guide will show you how to replace the carbon brushes in a Makita HM1307CB jack hammer. The steps to remove each of the two brushes are the same.

Before you begin, make sure the jack hammer is completely powered down and unplugged.

As you perform this repair, take note of all the screws that have been sealed with threadlocker and be sure to clean them and reapply the same color threadlocker during reassembly.



TOOLS:

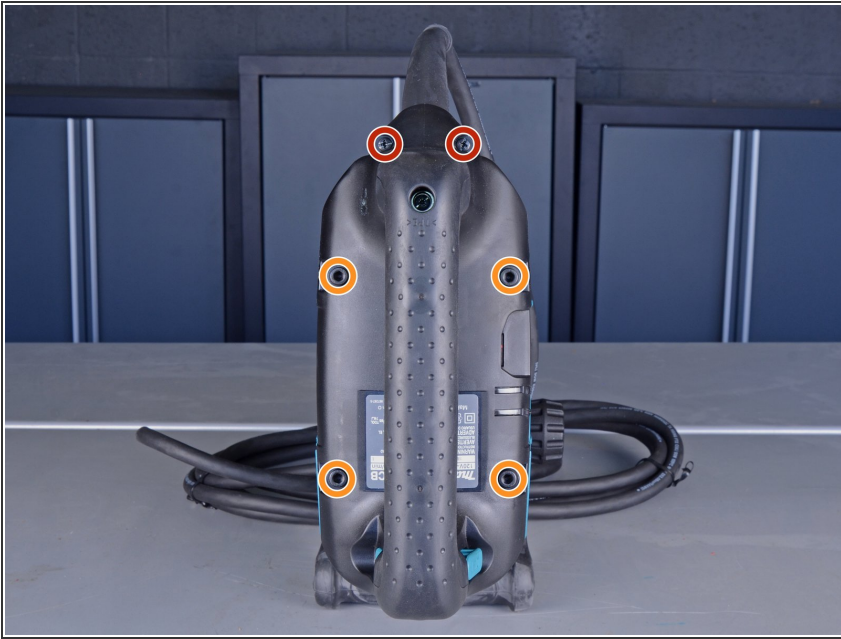
- [Phillips #2 Screwdriver](#) (1)
- [5 mm Hex Key](#) (1)



PARTS:

- [High-Strength Threadlocker](#) (1)
- [Makita Carbon Brush Set CB175](#) (1)

Step 1 — Remove six screws from the handle



- Remove the following screws:
 - Two Phillips screws
 - Four hex screws
- ⓘ These four hex screws are all held in place with threadlocker, and may take quite a bit of torque or even some heat to loosen.
- ✦ During reassembly, clean the residual threadlocker from these screws, then reapply high-strength (red) threadlocker to each one before reinstalling.
- ⓘ If you aren't sure how to apply threadlocker, refer to the next step in this guide.

Step 2



To reapply threadlocker:

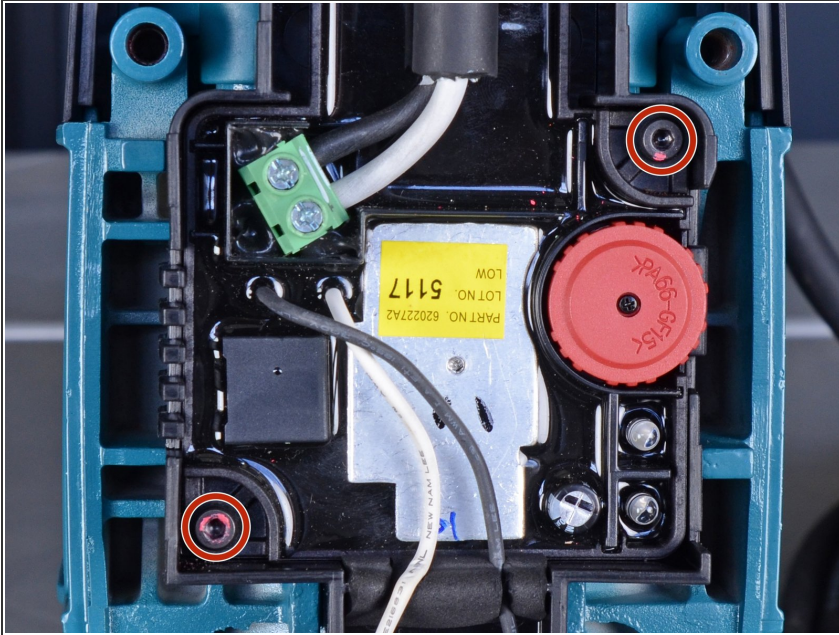
- First, clean the residual threadlocker from each of the screws with some cleaner/degreaser and a stiff brush.
- Second, apply a couple drops of high-strength threadlocker to the screw sockets.
- Finally, apply one or two drops of the same high-strength threadlocker to the tip of each screw and reinstall them.

Step 3 — Remove the handle



- Grab the handle and remove it from the jack hammer.

Step 4 — Remove two hex screws



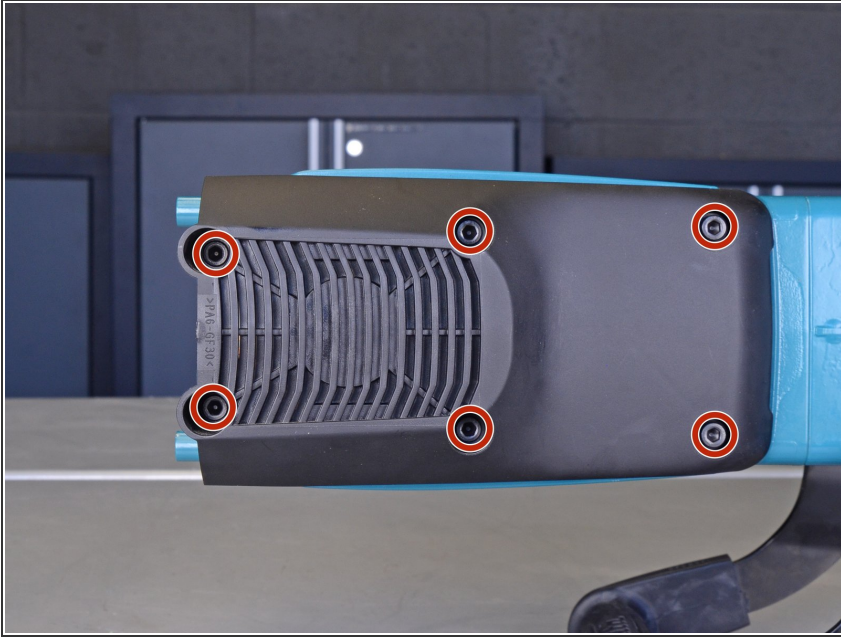
- Remove the two hex screws holding the controller cover in place.
- ☑ During reassembly, clean the residual threadlocker from these screws, then reapply high-strength (red) threadlocker to each one before reinstalling.

Step 5 — Remove the controller cover



- Remove the controller cover and the attached power supply cord from the jack hammer.

Step 6 — Remove six hex screws



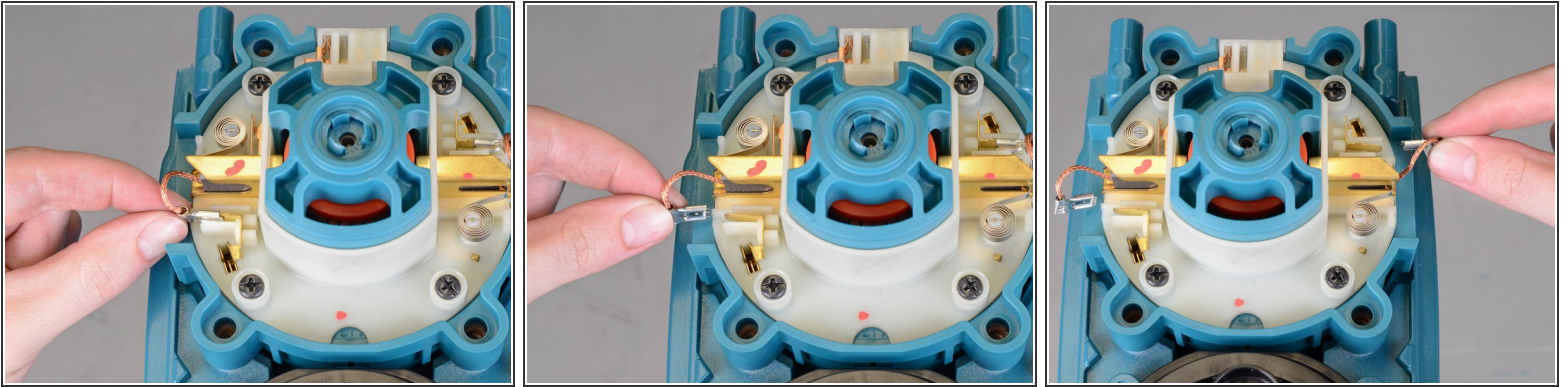
- Remove the six 5 mm hex screws holding the rear cover in place.
- ⓘ These six hex screws are all held in place with threadlocker, and may take quite a bit of torque or even some heat to loosen.
- ✦ During reassembly, clean the residual threadlocker from these screws, then reapply high-strength (red) threadlocker to each one before reinstalling.

Step 7 — Remove the rear cover



- Lift up the rear cover and remove it from the jack hammer.

Step 8 — Disconnect the brushes



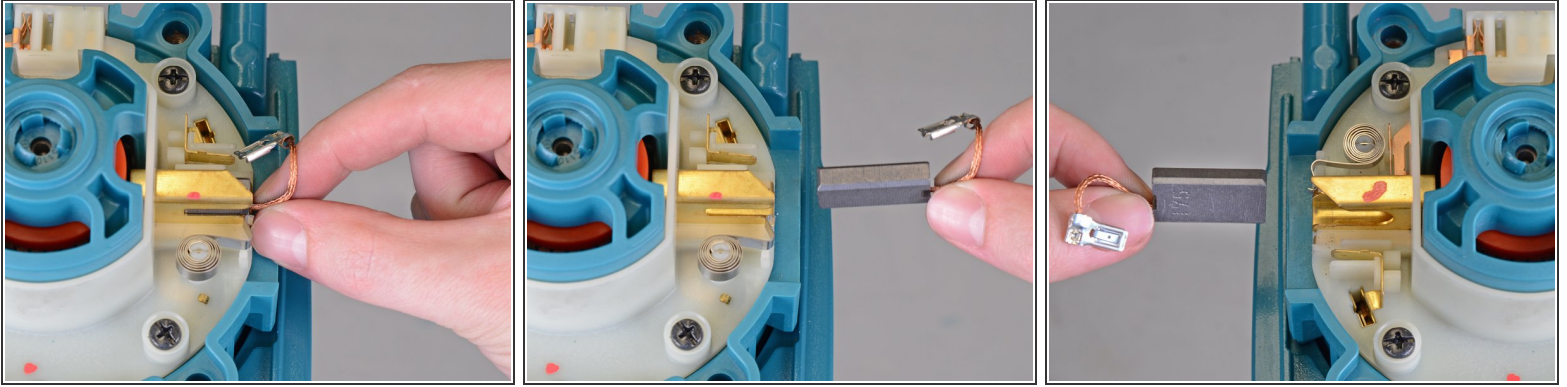
- Slide the brushes' metal clips off of the golden contact rails.

Step 9 — Move the tension spring



- Use your finger or a pry tool to pull back the spring holding each brush in place and press it against the brush channel to prevent it from snapping back into place on the brush.

Step 10 — Remove the brushes



- Slide the brushes out of their channels to remove them from the brush holder.

To reassemble your device, follow these instructions in reverse order, taking note of any reassembly tips.