



# Makita Jack Hammer HM1307CB Controller Replacement

Use this guide to replace the controller in a Makita HM1307CB jack hammer.

Written By: Taylor Dixon



## INTRODUCTION

This guide will show you how to remove and replace the controller in a Makita HM1307CB jack hammer.

Before you begin this repair, make sure that the jack hammer is completely powered down and unplugged.

**As you perform this repair, take note of all the screws that have been sealed with threadlocker and be sure to clean them and reapply the same color threadlocker during reassembly.**



### TOOLS:

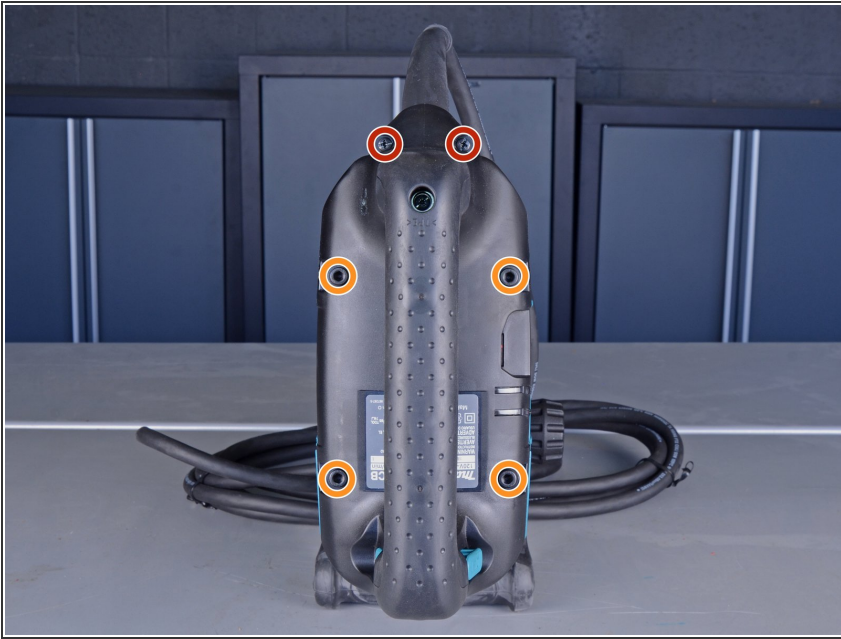
- [Phillips #2 Screwdriver](#) (1)
- [5 mm Hex Key](#) (1)
- [3mm Hex Key \(or Bit\)](#) (1)
- [Large Needle Nose Pliers](#) (1)



### PARTS:

- [High-Strength Threadlocker](#) (1)
- [Makita Controller 620227-2](#) (1)

## Step 1 — Remove six screws from the handle



- Remove the following screws:
  - Two Phillips screws
  - Four hex screws
- ⓘ These four hex screws are all held in place with threadlocker, and may take quite a bit of torque or even some heat to loosen.
- ✦ During reassembly, clean the residual threadlocker from these screws, then reapply high-strength (red) threadlocker to each one before reinstalling.
- ⓘ If you aren't sure how to apply threadlocker, refer to the next step in this guide.



## Step 2



### ✦ To reapply threadlocker:

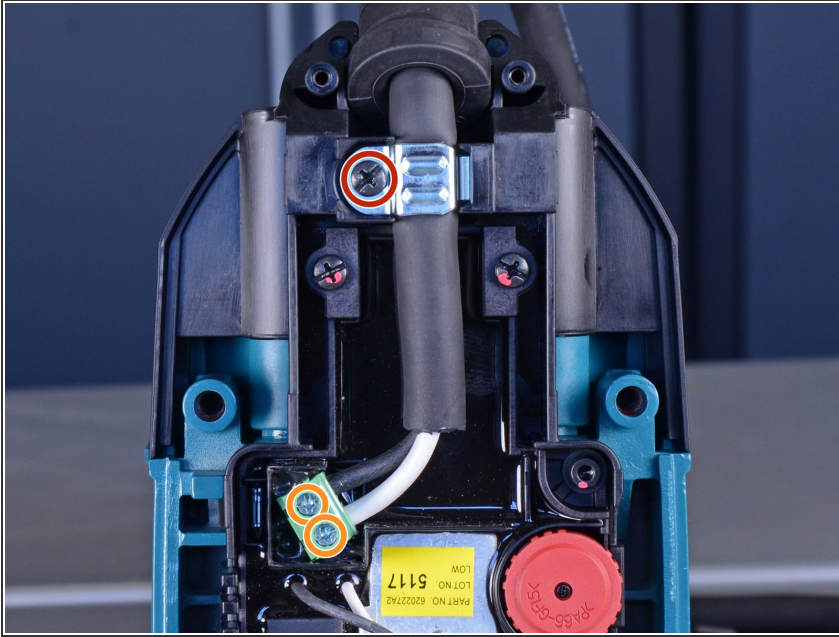
- First, clean the residual threadlocker from each of the screws with some cleaner/degreaser and a stiff brush.
- Second, apply a couple drops of high-strength threadlocker to the screw sockets.
- Finally, apply one or two drops of the same high-strength threadlocker to the tip of each screw and reinstall them.

## Step 3 — Remove the handle



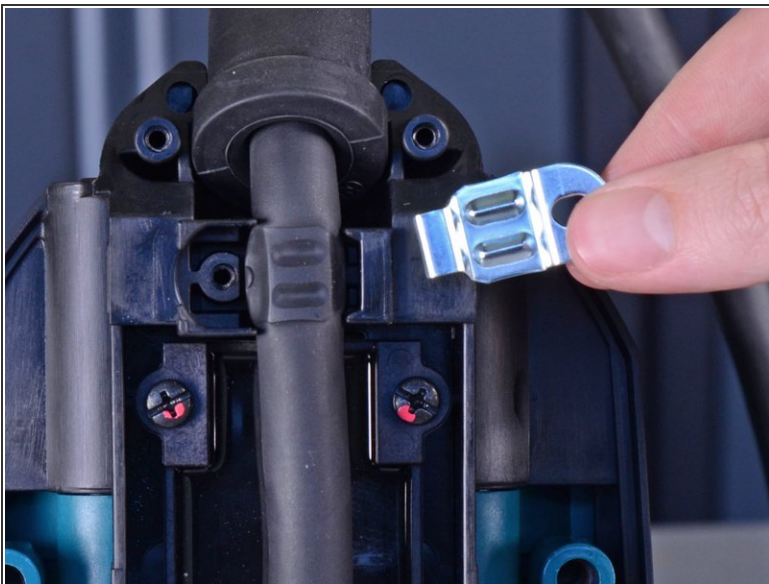
- Grab the handle and remove it from the jack hammer.

## Step 4 — Release the power supply cord



- Remove the black Phillips screw from the strain relief plate.
- Loosen the two silver Phillips screws that hold the stripped ends of the power cable in the green terminal on the controller. **These screws do not need to be removed.**

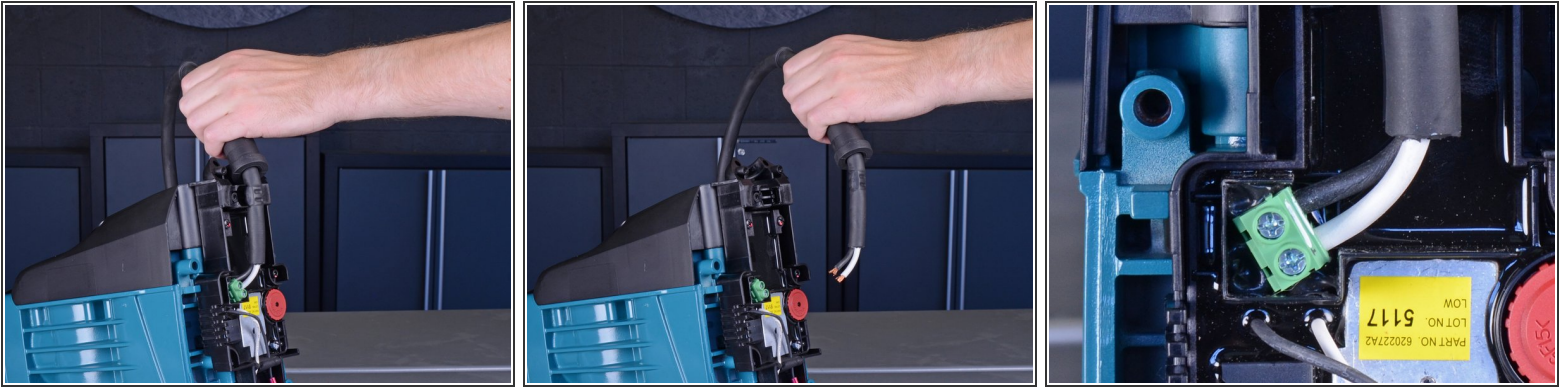
## Step 5



- Remove the strain relief plate.
  - ☑ During reassembly, hook the right edge of the strain relief plate under the lip to the right of the cord before pressing it into place and reinstalling the Phillips screw.

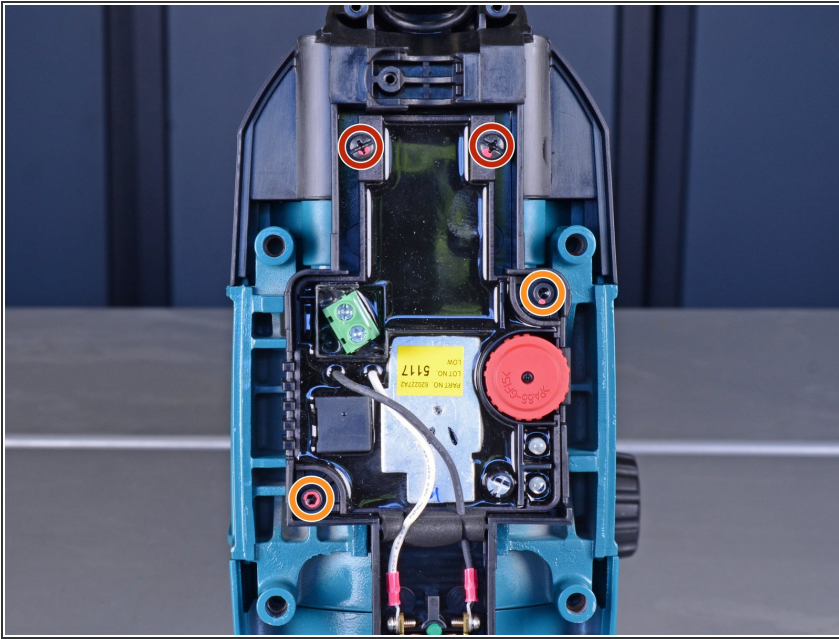


## Step 6 — Remove the power supply cord



- Remove the power supply cord from the jack hammer.
- ☞ As you remove the cord, note the position of the cord guard. During reassembly, make sure the collar of the cord guard fits back into its slot in the handle.
- ☞ When reinserting the two exposed wire ends into the green terminal:
  - First, compress the wire ends so they are relatively flat.
  - Then, insert each wire end into the green terminal, noting the polarity of the cables: the black cable should go into the upper slot, and the white cable should go into the lower slot (as shown in the third photo of this step).
  - Finally, gently tighten the screws until the wires are secured.

## Step 7 — Remove four screws from the controller cover



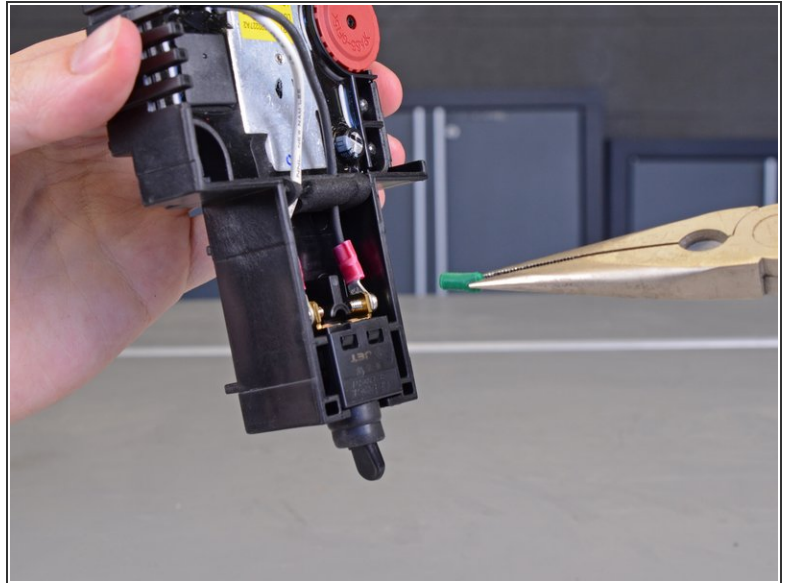
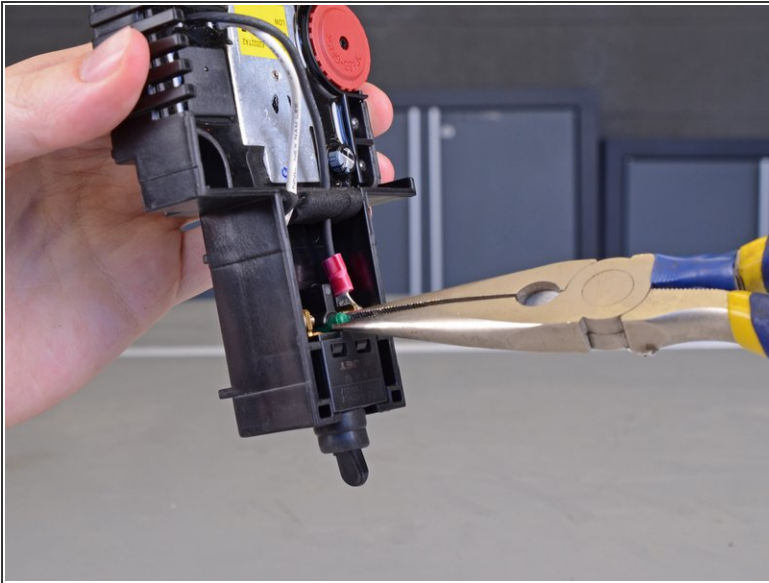
- Remove the following screws:
  - Two Phillips
  - Two 3 mm hex
- ⓘ These two hex screws are held in place with threadlocker and may require quite a bit of torque to remove.
- ☑ During reassembly, clean the residual threadlocker from these screws, then reapply high-strength (red) threadlocker to each one before reinstalling.

## Step 8 — Remove the controller cover



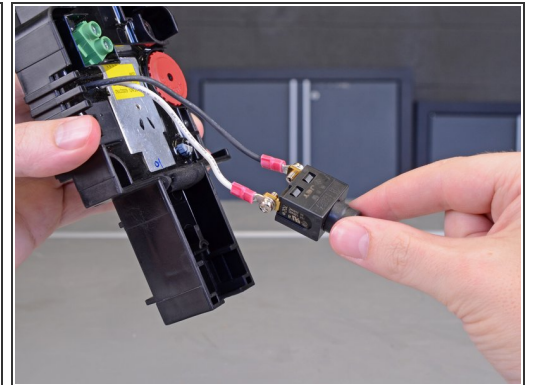
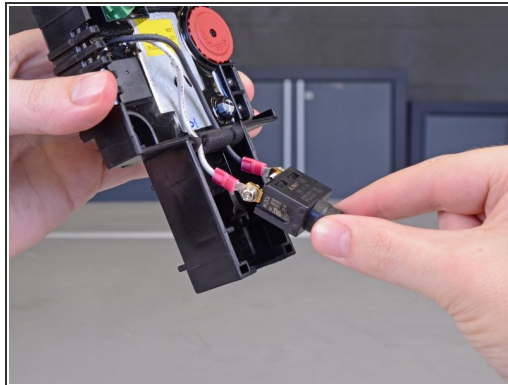
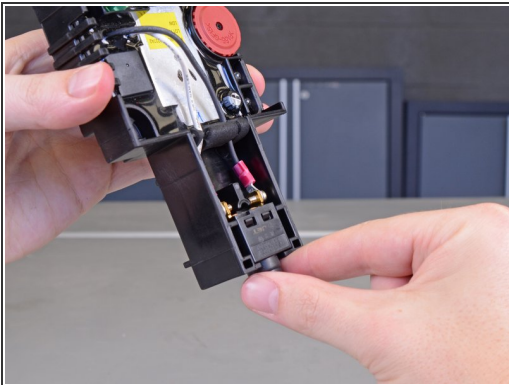
- Remove the controller and its cover from the jack hammer.

## Step 9 — De-route the power switch



- Use a pair of tweezers or pliers to remove the green rubber pin above the power switch at the bottom of the controller cover.

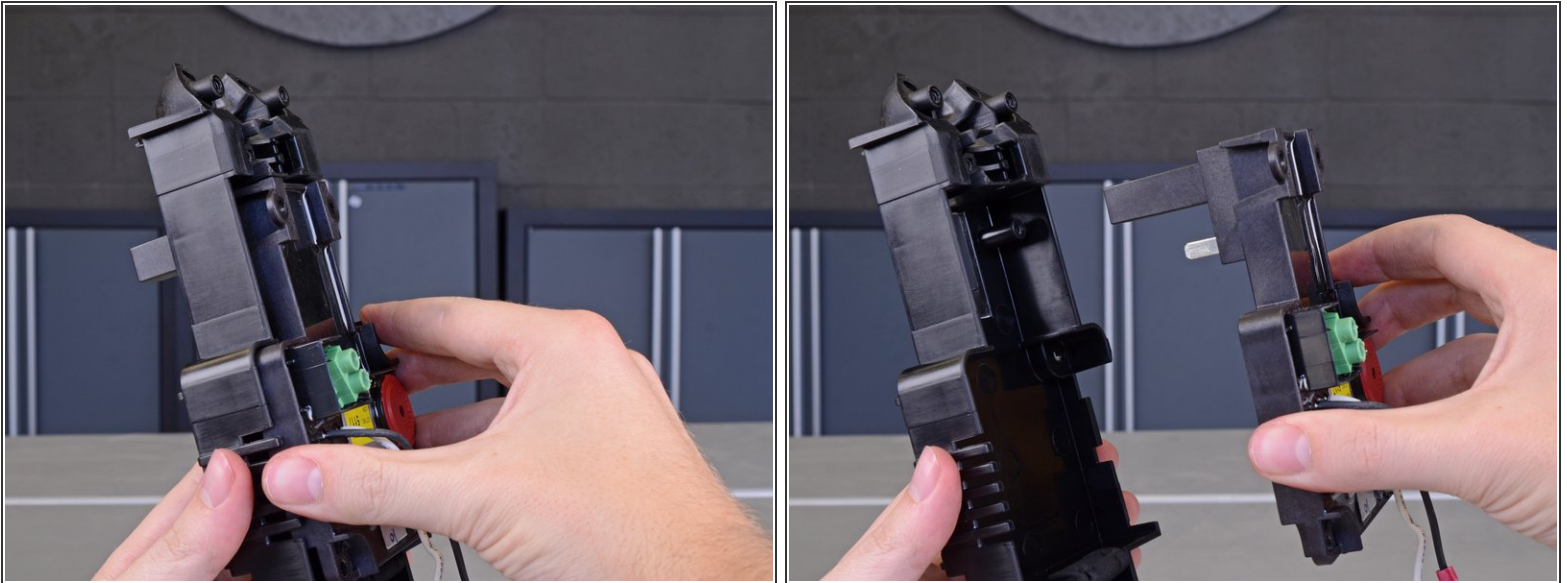
## Step 10



- Lift the power switch out of the controller cover and de-route the cables from the guide

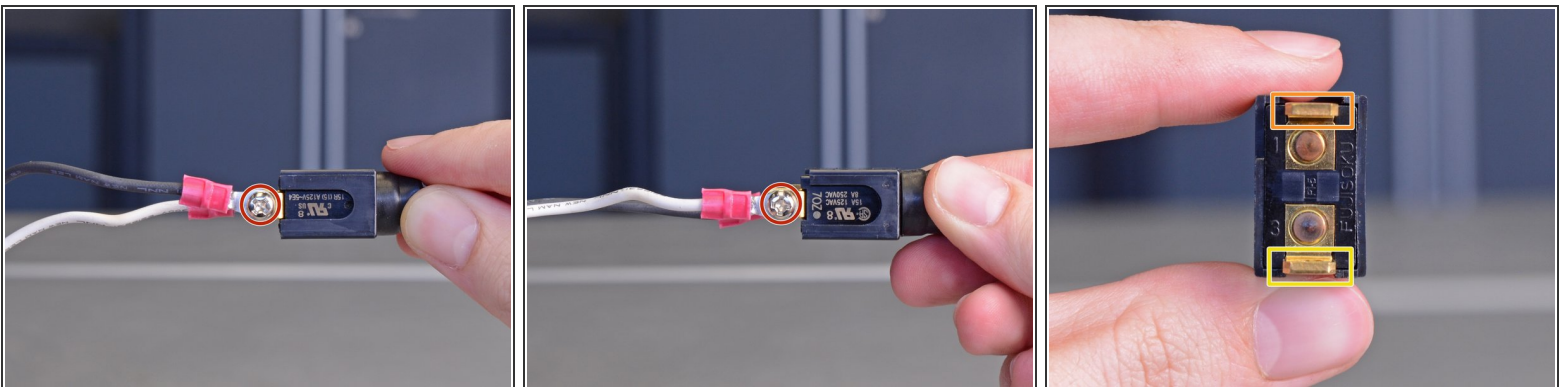


## Step 11 — Remove the controller from the controller cover



- Pull the controller straight out of the controller cover.

## Step 12 — Transfer the power switch



- ☒ Your replacement controller may not come with a power switch. If so, transfer the power switch from the original controller to the new one:
- Unscrew the two Phillips screws on either side of the switch.
  - Reattach the cables from the new controller to the switch, making sure that they go back on the same sides you found them.
    - The white cable goes on the side labeled with the number 1.
    - The black cable goes on the side labeled with the number 3.

To reassemble your device, follow these instructions in reverse order, taking note of any reassembly tips.