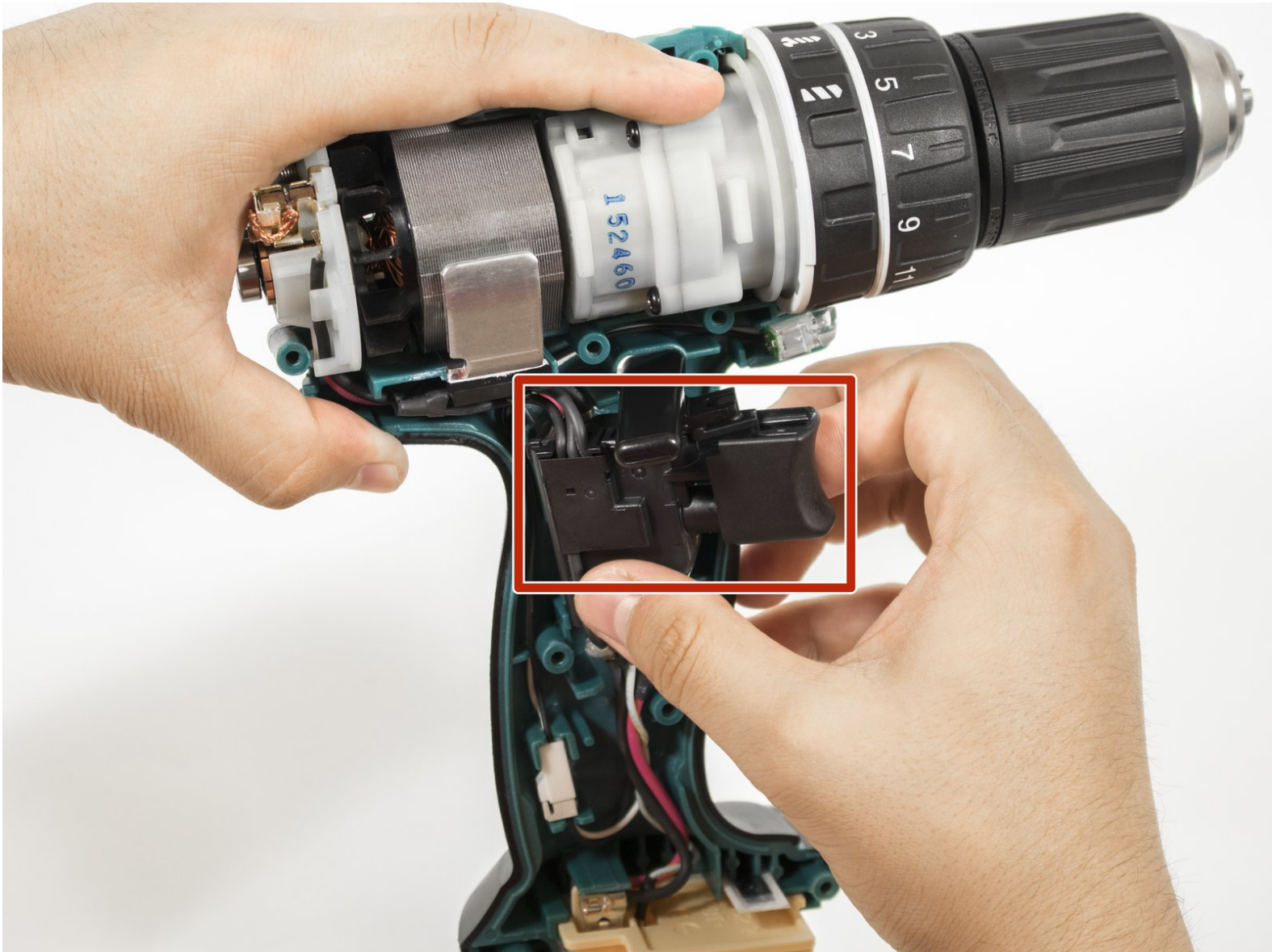




Makita XPH01 Forward/Reverse Switch Replacement

This guide will show you how to replace the forward/reverse switch on the Makita XPH01.

Written By: Eric Herwatt



INTRODUCTION

This guide will show you the necessary steps to replace the forward/reverse switch. It shows how to remove the battery and the outer casing, in order to locate the forward/reverse switch on the drill.



TOOLS:

- [Phillips #2 Screwdriver](#) (1)
-

Step 1 — Battery



- Hold the drill upright.
- Place your finger on the white battery-release button.

Step 2



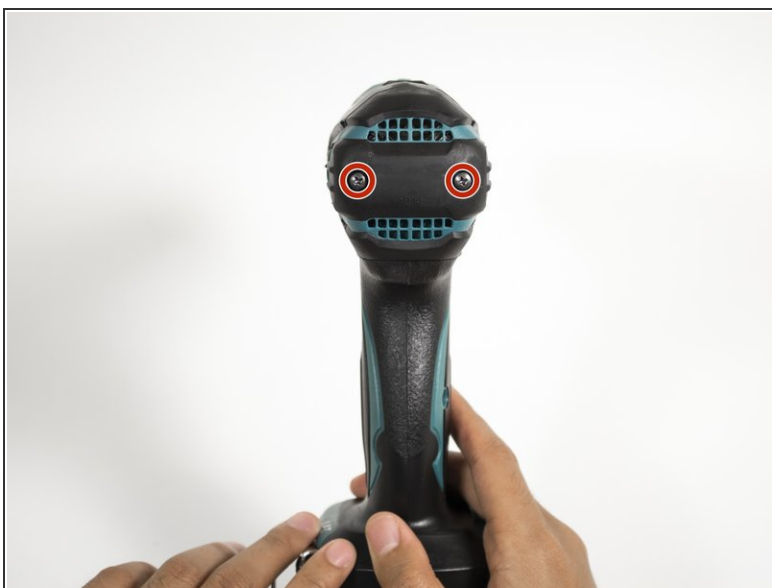
- Press and hold the white release button located on the front of the battery.

Step 3



- Slide the battery forward while pressing down on the white battery-release button.

Step 4 — Outer Casing



- Hold the drill upright with the back panel facing you.
- Unscrew the two 18 mm screws from the back panel using a Phillips PH2 screwdriver.

Step 5



- Apply slight pressure to the sides of the backplate and pull away from the drill.

Step 6



- Unscrew the nine 18 mm screws from the outer casing using a Phillips PH2 screwdriver.

Step 7



- Apply slight pressure to the sides of the outer casing and pull away from the drill.

Step 8 — Forward/Reverse Switch



- Pull the black trigger assembly away from the drill.

Step 9



- Grab onto the forward/reverse switch.
- Gently pull the forward/reverse switch to separate it from the trigger assembly.

To reassemble your device, follow these instructions in reverse order.