



Managing Texas Instruments TI-92 Keyboard

Written By: Daniel Maldonado

KeyBoard



INTRODUCTION

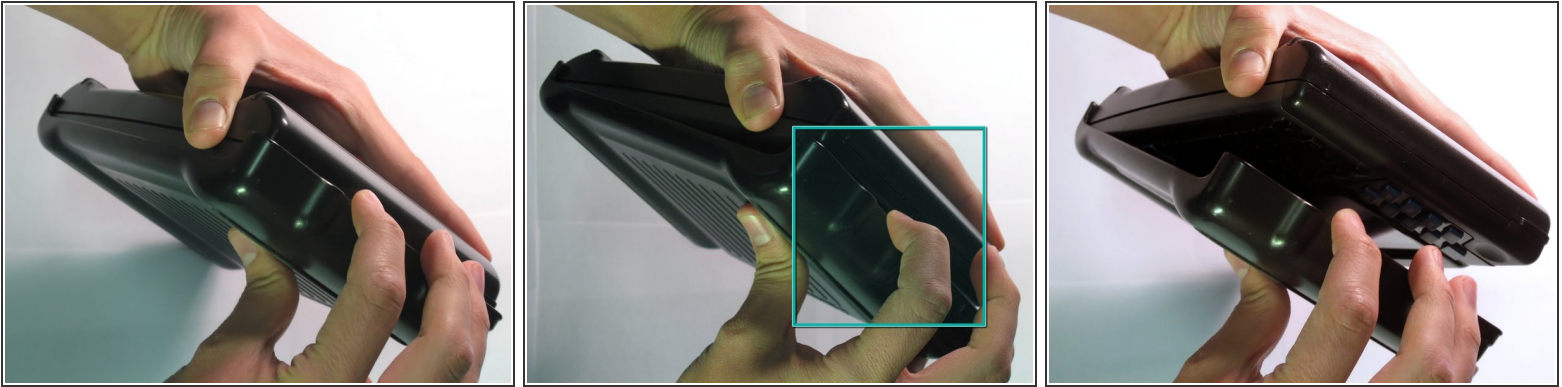
In this guide we will show you how to access the keyboard.



TOOLS:

- [Phillips #00 Screwdriver](#) (1)
 - [iFixit Opening Tools](#) (1)
 - [Tweezers](#) (1)
-

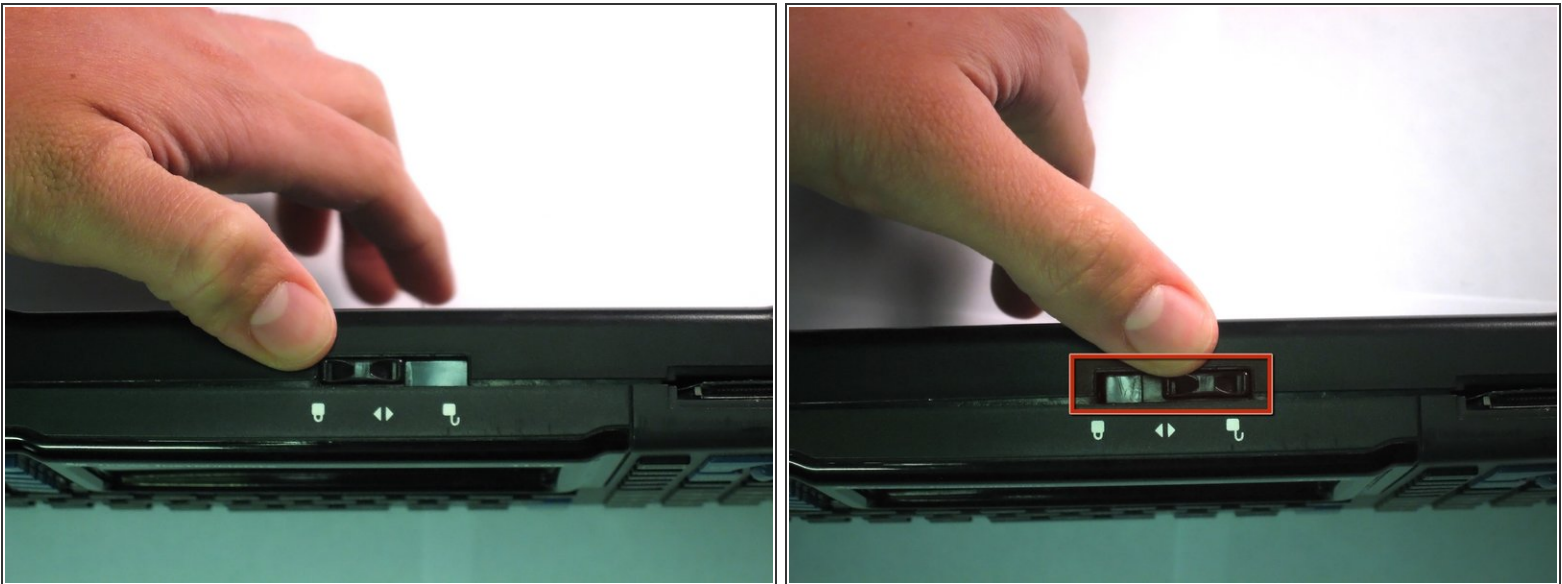
Step 1 — Back Cover



i The first step to any repair operation is to remove the front cover.

- Grab the back of the calculator with one hand and the cover with the other.
- Pull the cover off from one of the sides for easy removal.

Step 2



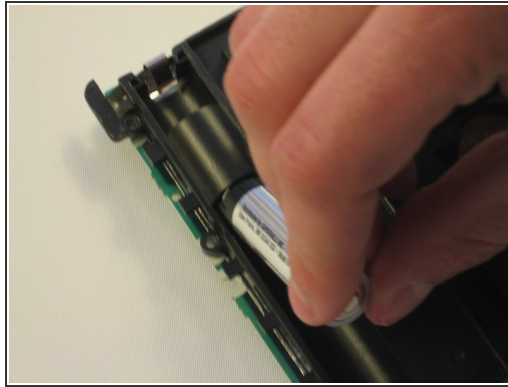
- Orientate the calculator with the top facing towards you.
- Slide the locking tab, found on the top part of the calculator, to the unlock position.

Step 3



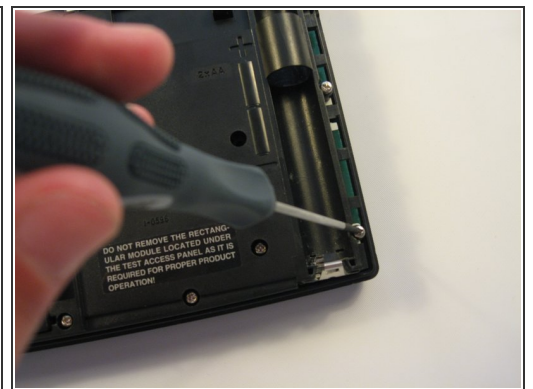
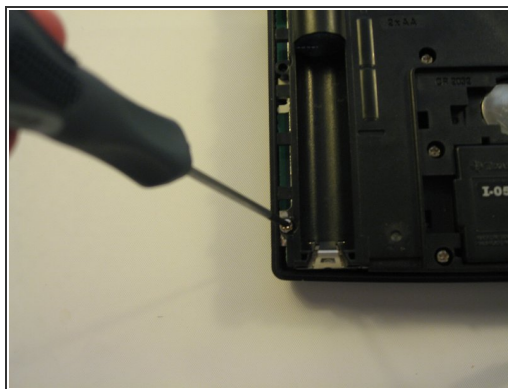
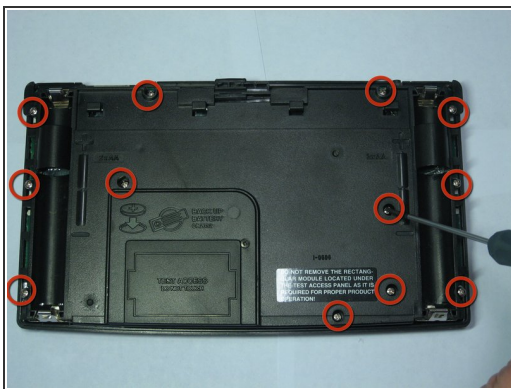
- "Locking Tab"
- To remove the back cover, slide the cover away from the locking tab towards the bottom of the calculator until the cover no longer slides.
- Then with the front of the calculator facing down, pull up on the back cover.
- The calculator should now be orientated with the front facing down, as shown in picture 2.

Step 4 — Batteries



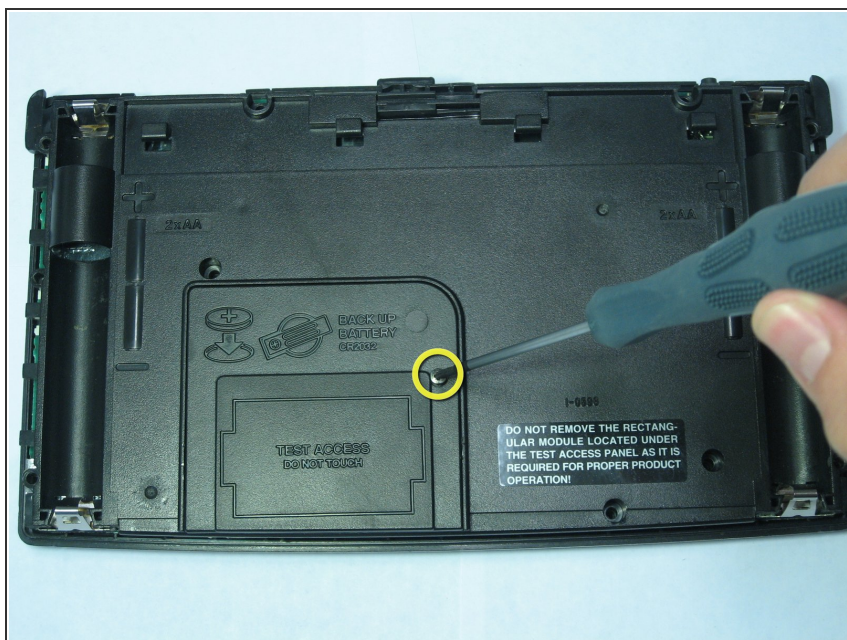
- i The Batteries are now exposed and the calculator is face down with the back towards you.
 - Remove the bottom batteries by pressing the battery towards you while pulling it out from the far end.
- i If you can not do the previous step with your finger try using a flat ended tool such as an Ipod opening tool.
 - After the bottom battery has been removed push or slide the other(*top*) battery towards you until it is fully exposed in the battery slot.
 - Now simply remove the battery.

Step 5 — Texas Instruments TI-92 Back Case Disassembly



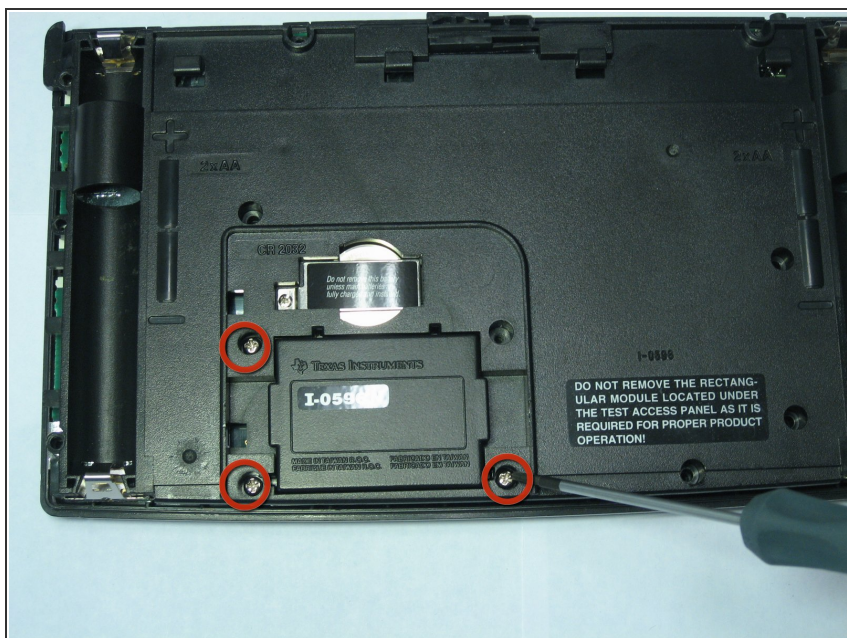
- Using a Philips Screwdriver #00 unscrew the twelve 11.8mm screws shown in the picture and located on the back of the calculator.

Step 6



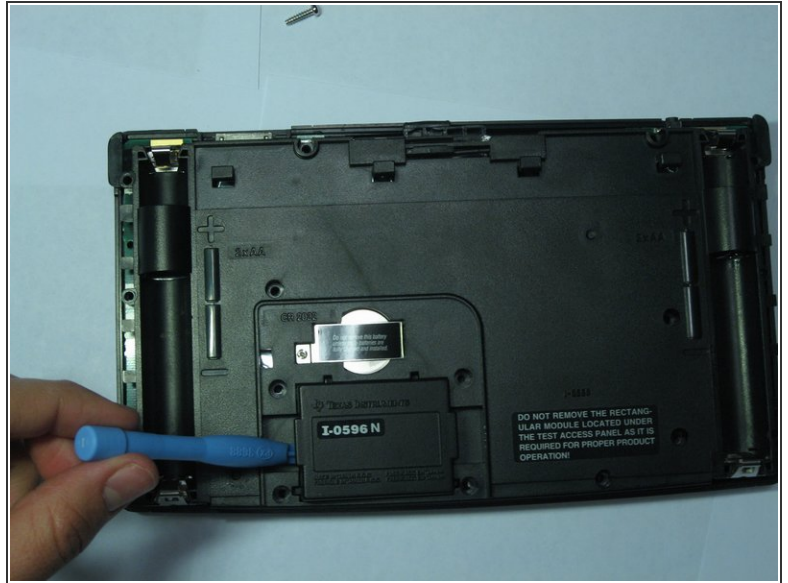
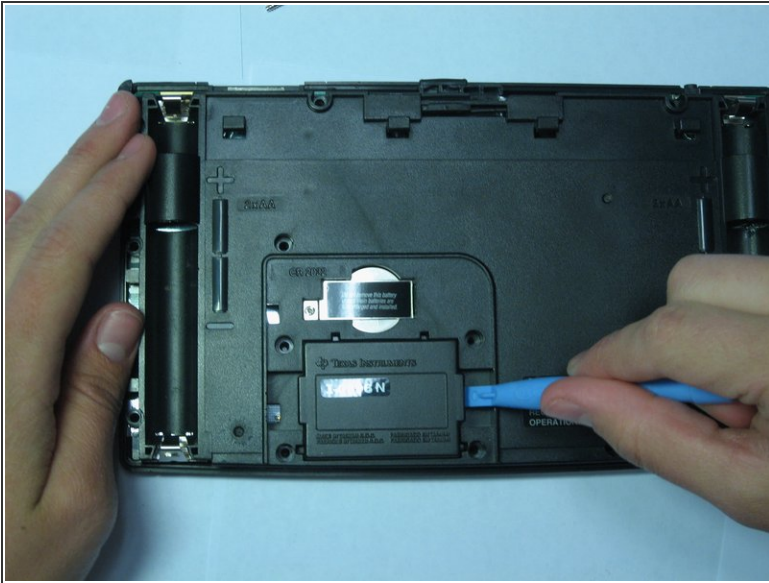
- Unscrew the 19mm screw located near center of the back of the calculator.
- Remove the panel being held by the screw.

Step 7



- Using the same Phillips screwdriver, unscrew the remaining three 11.8mm screws.

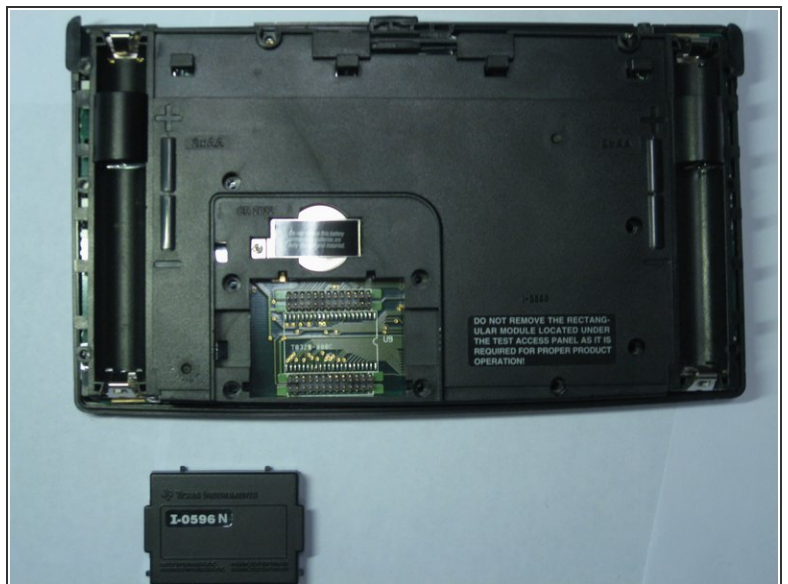
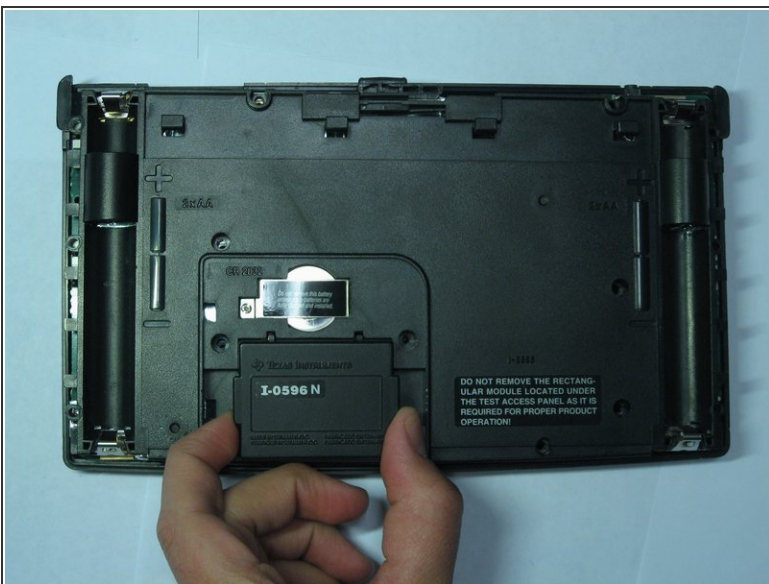
Step 8



- Using the Ipod Opening Tool pull up on both sides of the rectangular module while keeping the rest of the calculator flat on a surface face down

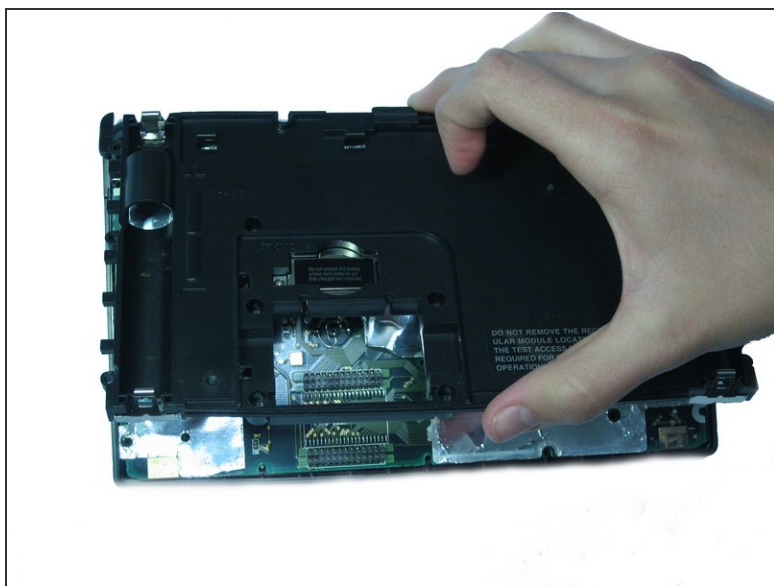
⚠ You may get a lot of resistance from the module. Do not use too much force as you risk damage. Use small amounts of force to work the module out.

Step 9



- Pull out the rectangular module when it is finally loose enough.

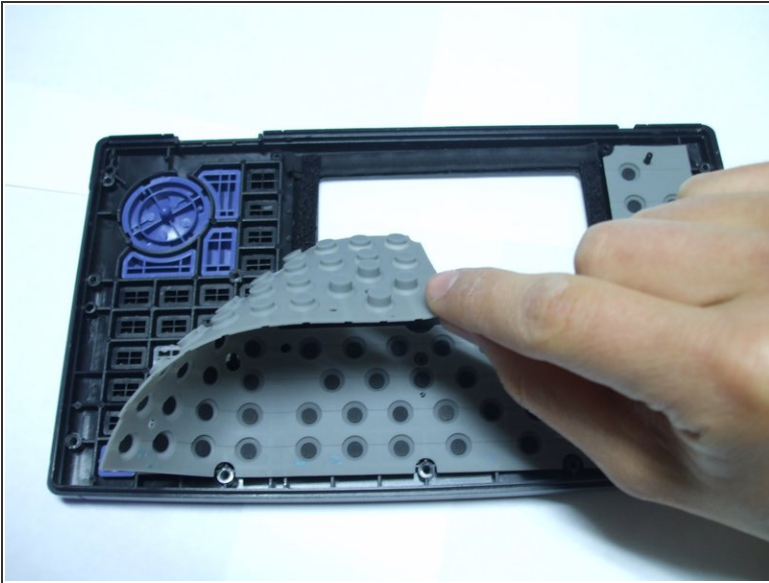
Step 10



- Now pull up on the back cover of the calculator while holding the rest of it flat on a surface.

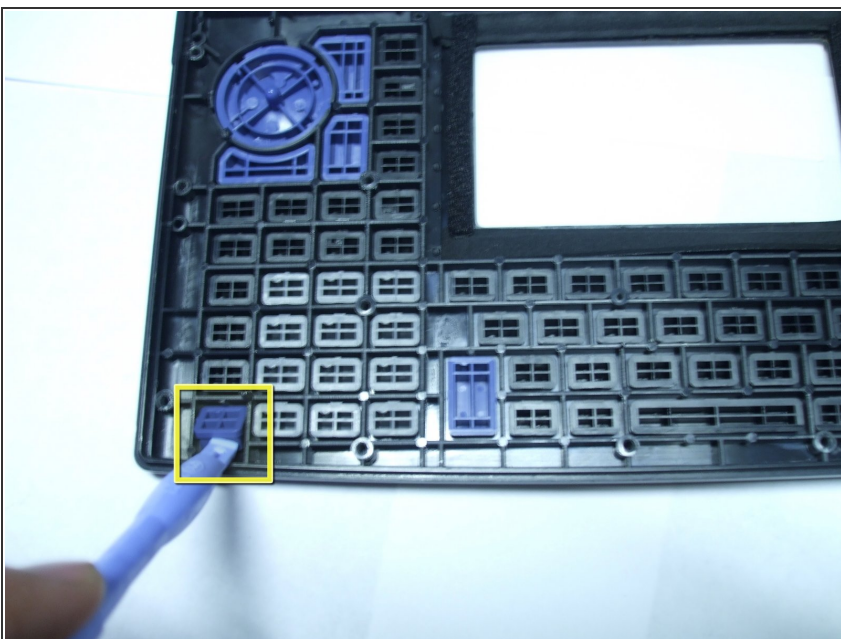
⚠ Be careful not to tilt the front of the calculator at this point. The keyboard buttons are now unsupported and will fall out of place.

Step 11 — Keyboard



- Here we will use the front panel, separate from the motherboard
- ⚠ Make sure not to tilt this part unless you want to remove all the keys from the face plate.
- Remove the rubber contact lying on top of the keys.

Step 12



- With the rubber contact removed the keys can now be removed to be replaced, cleaned, or manipulated in other ways.
- To aid the removal of individual keys you can use the Ipod Opening Tool or preferably a pair of tweezers.

Step 13



- When placing the keys back into the faceplate you have to make sure that they are going in the right direction.
- You can tell which way is up by a semicircular extrusion on the back of a key.
- The gray and blue keys have the extrusion on the upper left hole looking at the back of the key.
- The black keys on the other hand have the extrusions on the lower left hole looking at the back of the key.

Step 14



- i** Use the pictures shown here as guides for where the keys should go if the keys fell out or you simply chose to remove them.

To reassemble your device, follow these instructions in reverse order.