



# Marshall Kilburn Power Switch Replacement

This guide will demonstrate how to replace the power switch from your Marshall Kilburn device.

Written By: Jeff Feuss



## INTRODUCTION

The power switch is an essential part of using the Marshall Kilburn Bluetooth Speaker, and rarely fails. However, if it does it is fairly simple to replace. This guide allows you to gain access to the power switch in case the device does not respond to flipping the switch. The power switch is capable of breaking if dropped or mishandled, so handle with care.



### TOOLS:

- [T10 Torx Screwdriver](#) (1)
  - [Spudger](#) (1)
-

## Step 1 — Battery



- Place the unit face down as shown in the picture, exposing the battery cover.
- Remove the two 4.0mm long screws holding the cover on using a T10 driver.

## Step 2



- Remove the battery cover using a fingernail or nylon spudger.



### Step 3



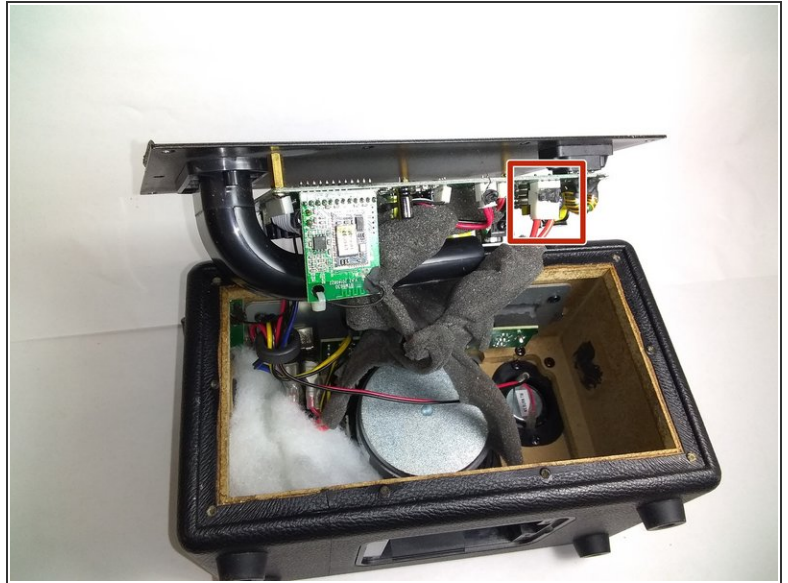
- Remove the battery and unplug the power lead.

### Step 4 — Power Switch



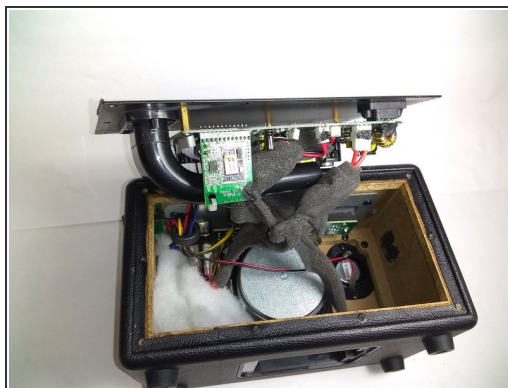
- Place speaker as shown in image and remove the four corner 45.5mm back cover screws with a Phillips #2 driver.
- Using a Phillips #2 driver, remove the six remaining 21.5mm outer back cover screws.

## Step 5



- Remove the back cover by using the vent hole as a grip.
- Gently pull out the back cover and let it hang on the side of the speaker that has the knobs and power switch.
- Unplug the main power lead from the control board; this allows the back to be opened more, allowing easy access to the power switch.

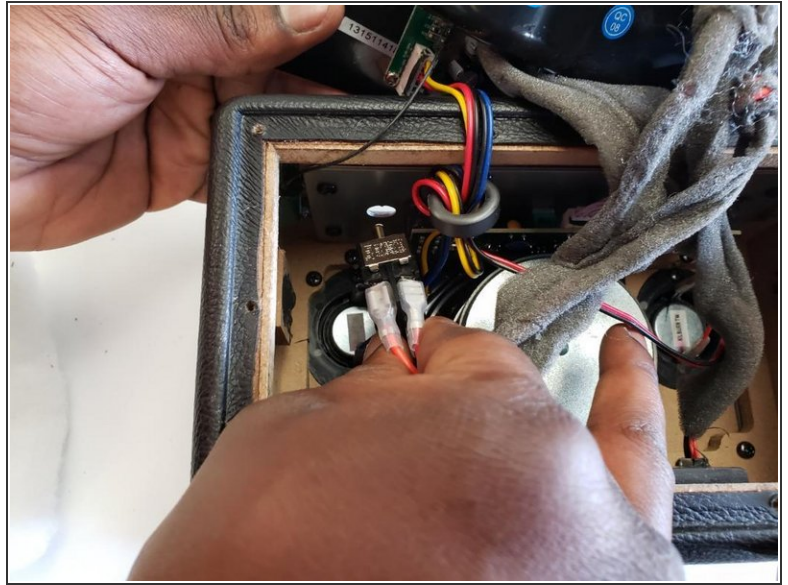
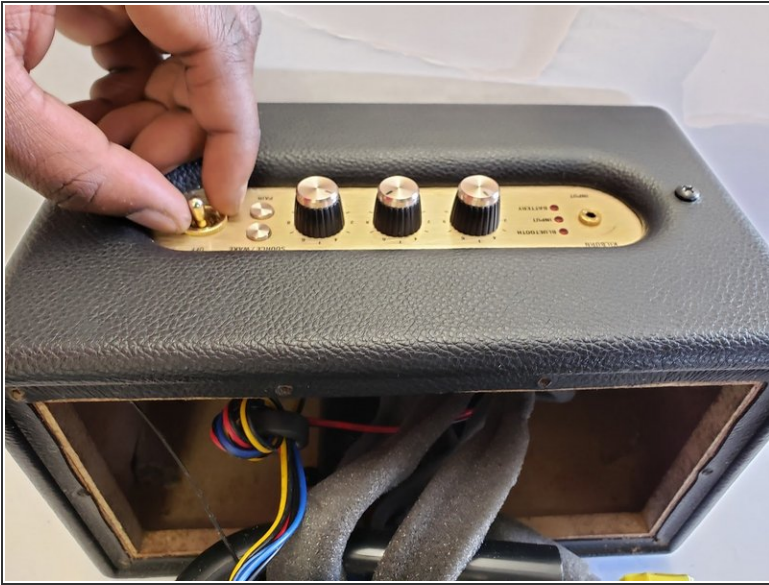
## Step 6



- Pull the back cover attached to the motherboard to the side as shown in first image.
- Remove the white insulator from the stereo speaker and place it to the side.

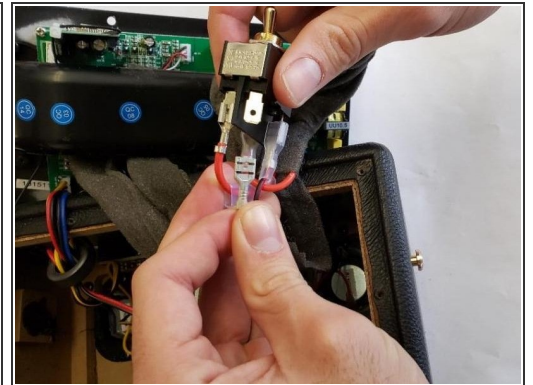
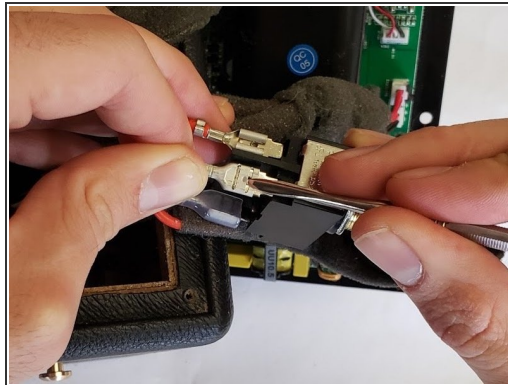
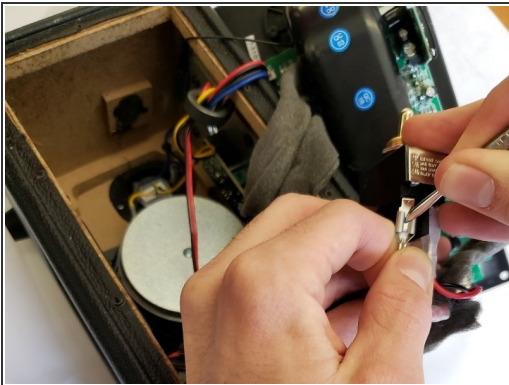


## Step 7



- Place the speaker up right, and unscrew the golden bolt around the power switch with your hands, or a wrench.
- Gently pull out the power switch as shown in the image.

## Step 8



- Use a slim spudger to wedge out the four red wires attached to the power switch.

To reassemble your device, follow these instructions in reverse order.