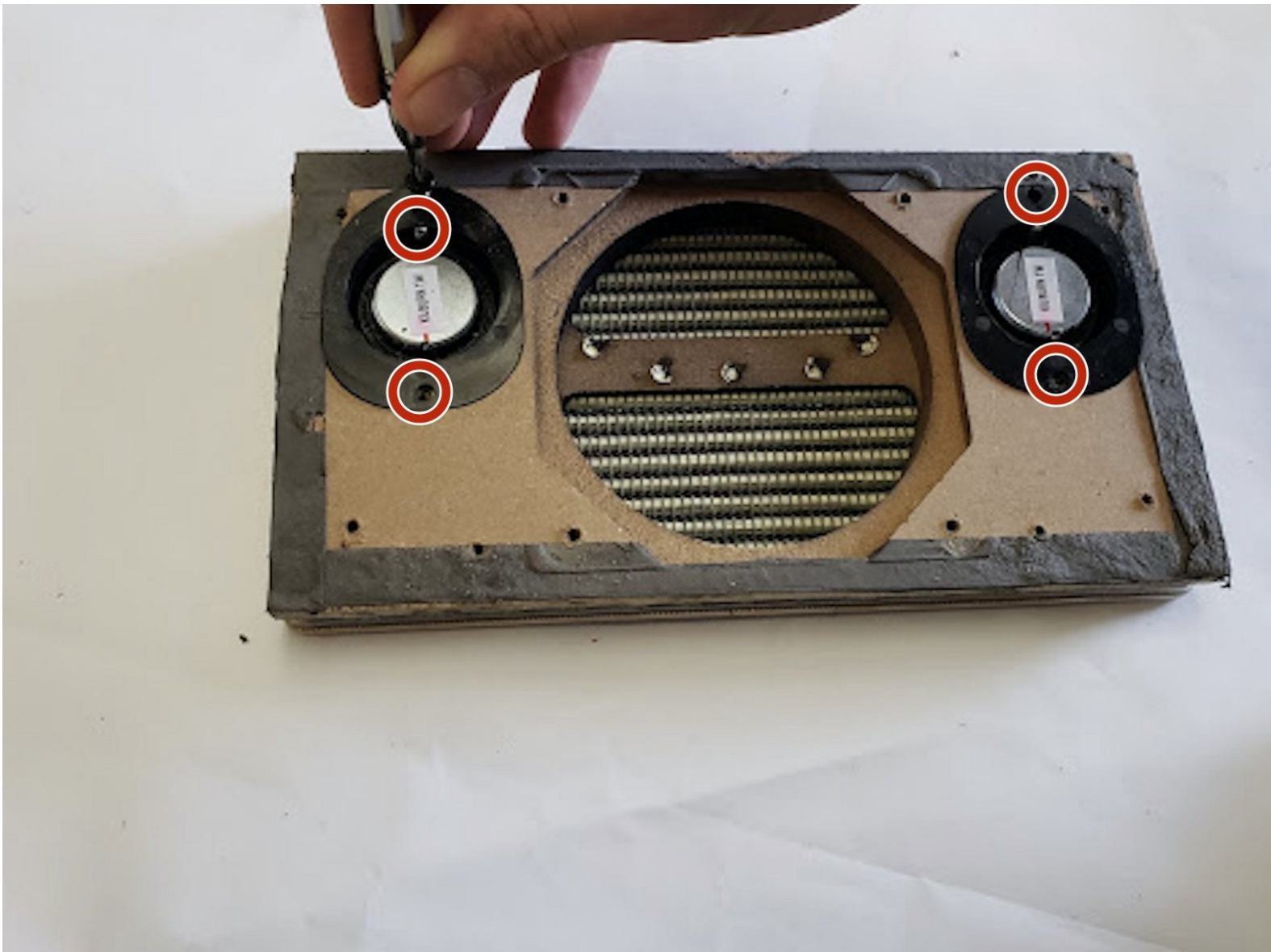




Marshall Kilburn Tweeters Replacement

This guide will teach you how to replace the tweeters in the Marshall Kilburn speaker.

Written By: Brad Schiffner



INTRODUCTION

If you are hearing popping sounds when high pitch sounds are played then there could be a problem with your tweeters and they need to be replaced. This guide will teach you how to do just that.

TOOLS:

- [T10 Torx Screwdriver](#) (1)
 - [Spudger](#) (1)
 - [Phillips #2 Screwdriver](#) (1)
-

Step 1 — Battery



- Place the unit face down as shown in the picture, exposing the battery cover.
- Remove the two 4.0mm long screws holding the cover on using a T10 driver.

Step 2



- Remove the battery cover using a fingernail or nylon spudger.

Step 3



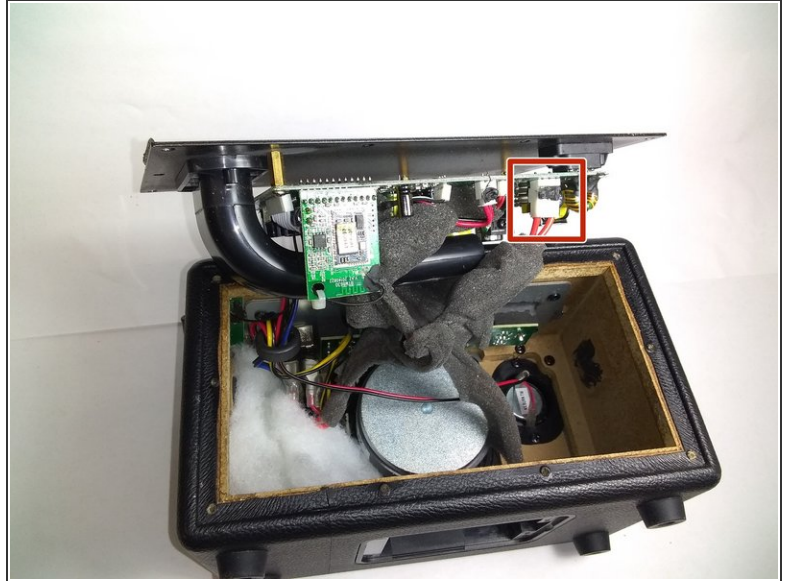
- Remove the battery and unplug the power lead.

Step 4 — Power Switch



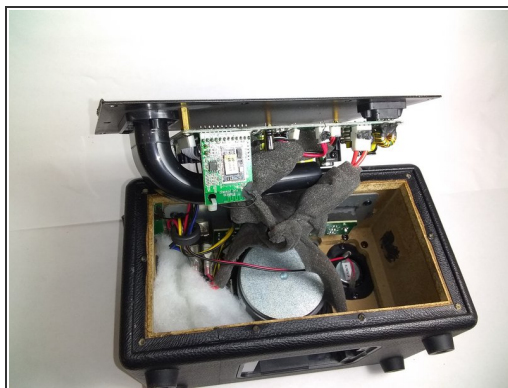
- Place speaker as shown in image and remove the four corner 45.5mm back cover screws with a Phillips #2 driver.
- Using a Phillips #2 driver, remove the six remaining 21.5mm outer back cover screws.

Step 5



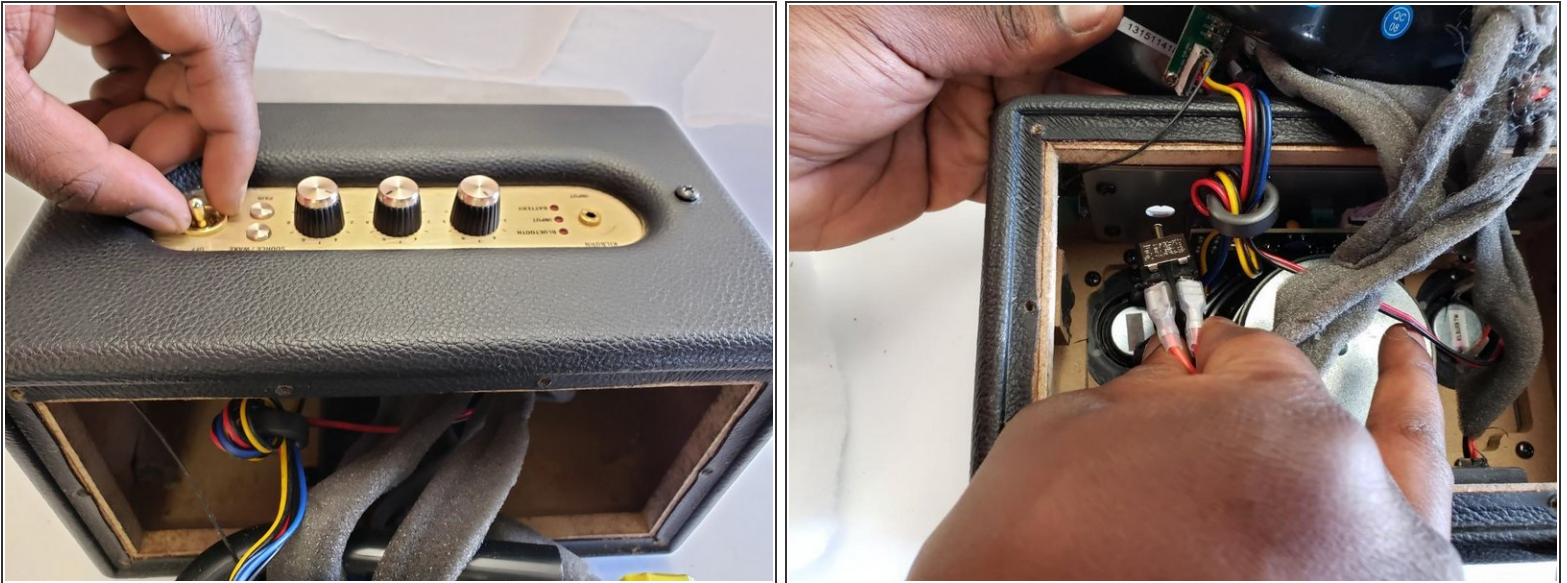
- Remove the back cover by using the vent hole as a grip.
- Gently pull out the back cover and let it hang on the side of the speaker that has the knobs and power switch.
- Unplug the main power lead from the control board; this allows the back to be opened more, allowing easy access to the power switch.

Step 6



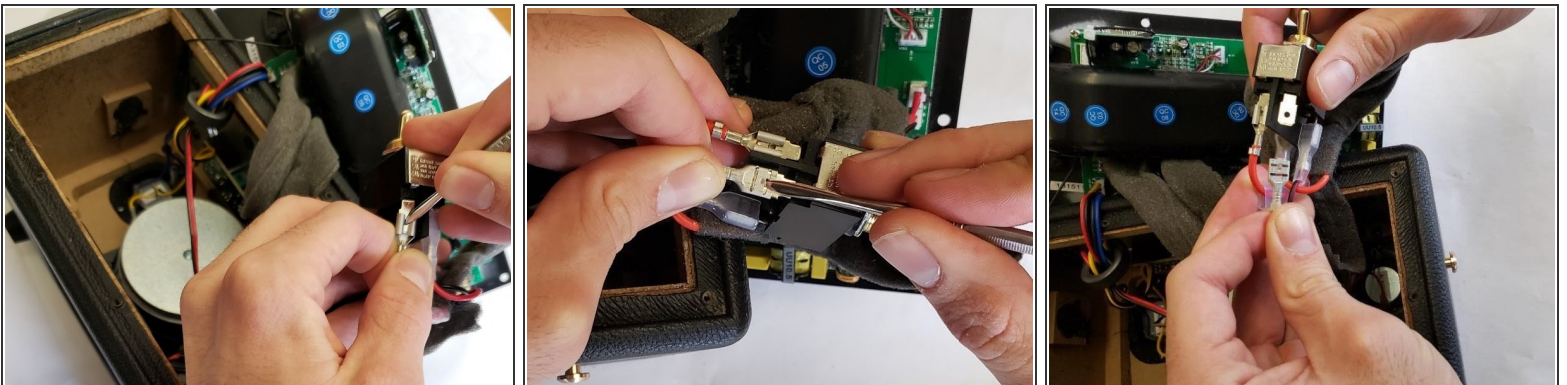
- Pull the back cover attached to the motherboard to the side as shown in first image.
- Remove the white insulator from the stereo speaker and place it to the side.

Step 7



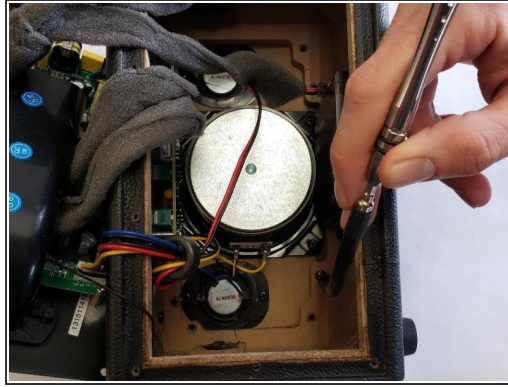
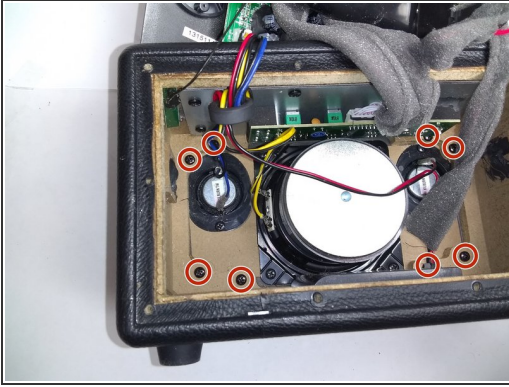
- Place the speaker up right, and unscrew the golden bolt around the power switch with your hands, or a wrench.
- Gently pull out the power switch as shown in the image.

Step 8



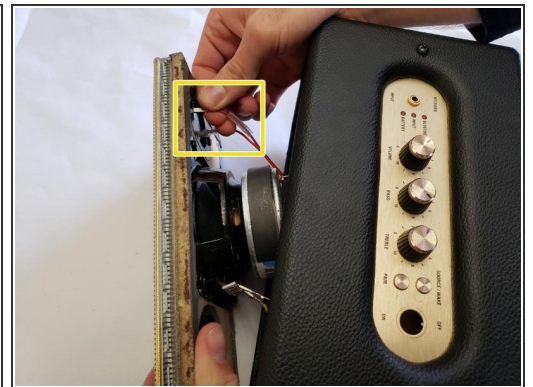
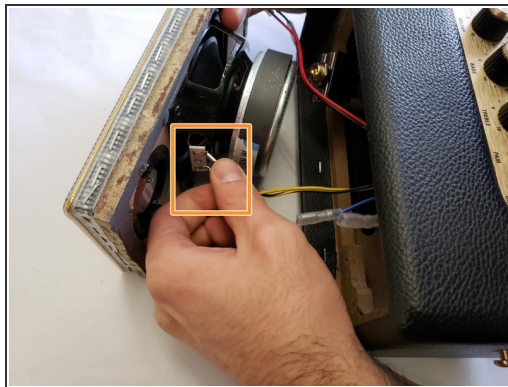
- Use a slim spudger to wedge out the four red wires attached to the power switch.

Step 9 — Main Speaker



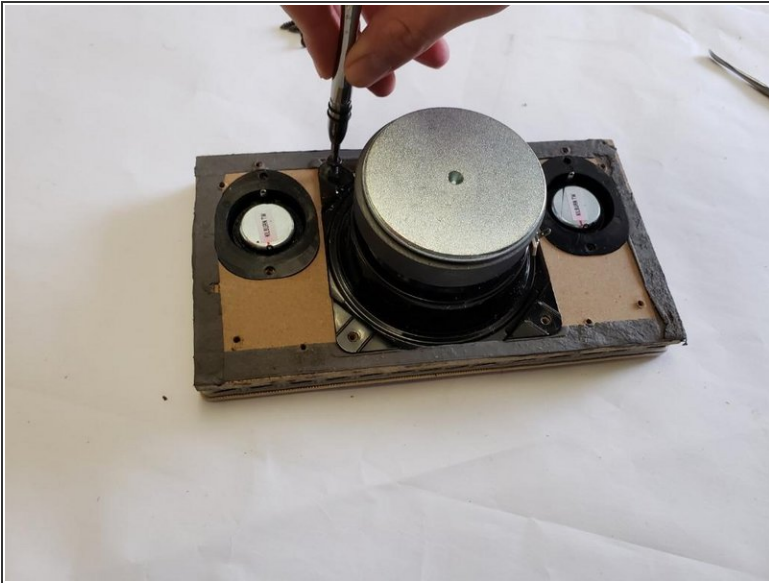
- Unscrew the eight 22.5mm screws of the speaker cover and the device using a Phillips #2 screwdriver.
 - Gently push the speaker cover out of the stereo speaker.
- ⚠ Make sure to slowly push out the speaker cover, and not too far because it is still connected to the stereo speaker.

Step 10



- Disconnect the blue wires connected to the tweeter.
- Disconnect the yellow wires connected to the main speaker.
- Disconnect the red wires connected to the second tweeter.

Step 11



- Unscrew the four 13.5mm screws connecting the main speaker to the speaker cover, with a Phillips #2 screwdriver.

Step 12 — Tweeters



- Remove the four 13.5mm screws that are placed on the tweeters with a Phillips #2 screwdriver.

To reassemble your device, follow these instructions in reverse order.

This document was generated on 2019-10-20 06:58:44 PM (MST).

