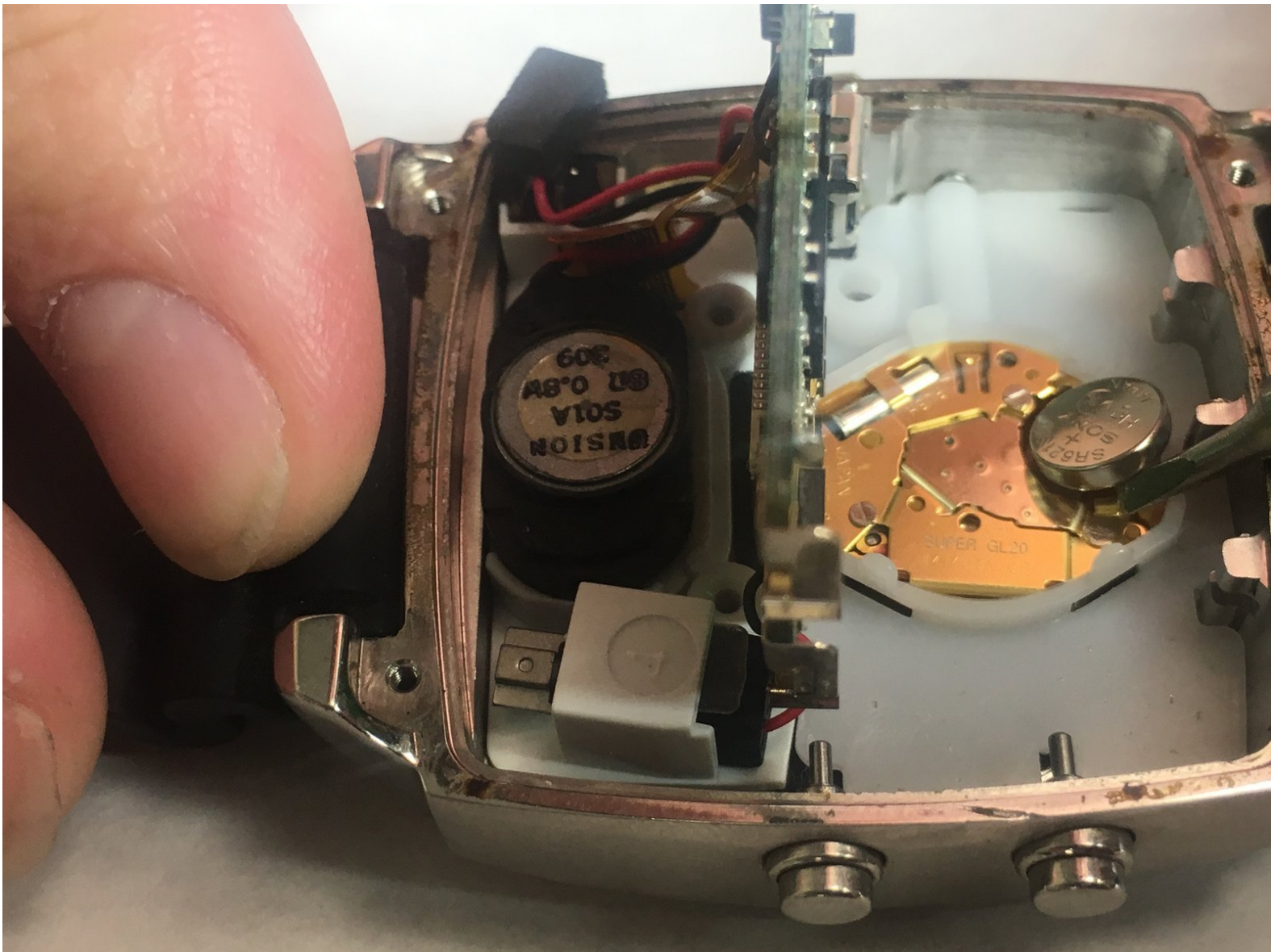




Martian Victory Analog Watch Battery Replacement

This disassembly will show the user to how to access the analog watch battery for replacement.
This battery powers the analog clock portion of the watch.

Written By: David Miller



INTRODUCTION

This guide will illustrate how to replace the analog battery in the Martian Victory watch.

It is very important to tell your users to use the correct tool for the job. Metal spudgers and screwdrivers can damage delicate internal components and puncture an unprotected battery, potentially causing a fire. When working with electronics, it's important to choose a tool that's ESD-safe to avoid accidental damage to the device. The metal spudger is great when you need serious prying power, but the regular black nylon spudger or a plastic opening tool should be used whenever possible.



TOOLS:

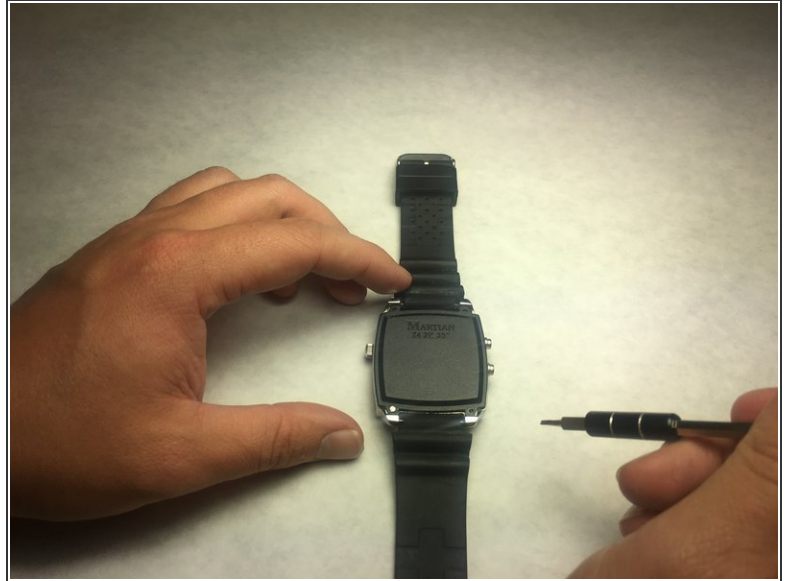
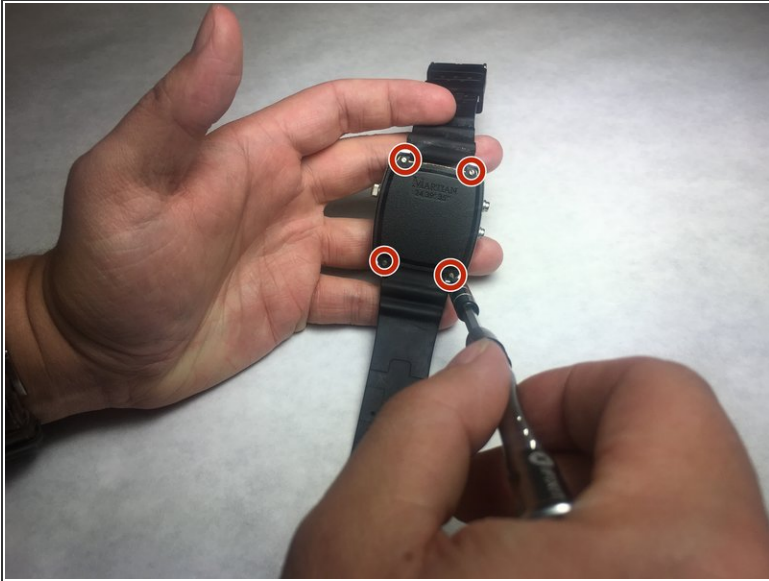
- [Tweezers](#) (1)
- [1.5 mm Flathead Screwdriver](#) (1)
- [iFixit Opening Tools](#) (1)
- [Phillips #00 Screwdriver](#) (1)
- [Spudger](#) (1)



PARTS:

- [Maxell SR626SW battery](#) (1)

Step 1 — Back Plate



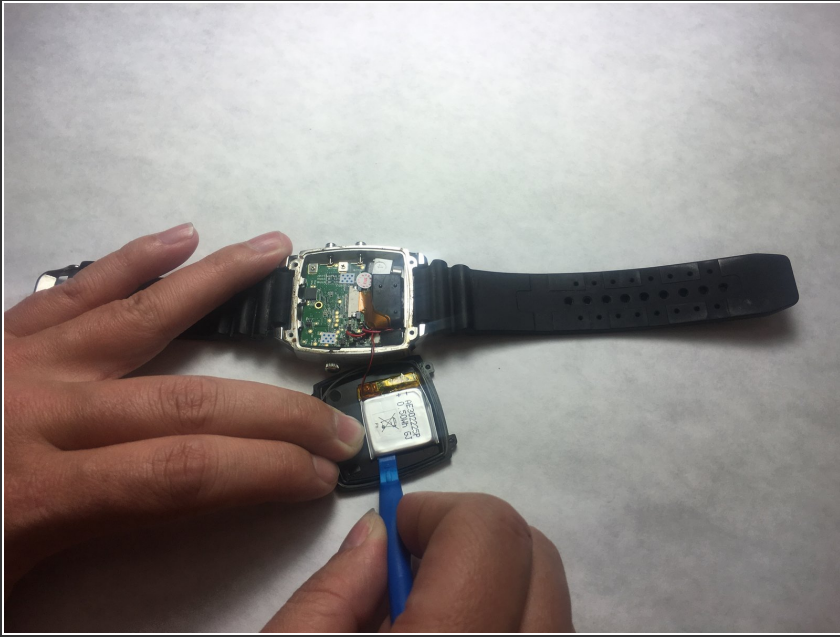
- Unscrew the four 3.4 mm flat head screws

Step 2



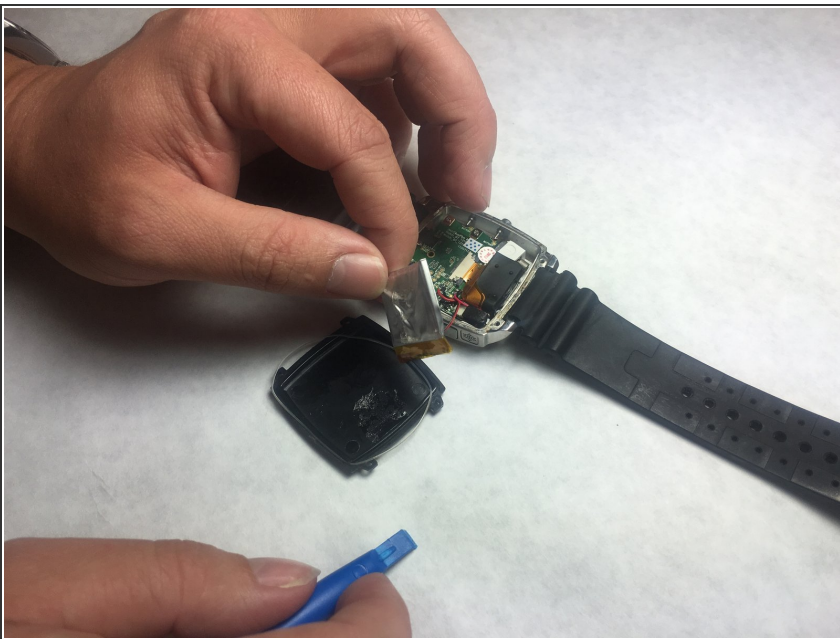
- Carefully lift the back plate off the watch. You will notice a lithium battery and rubber gasket attached to the back plate.

Step 3 — Lithium Battery



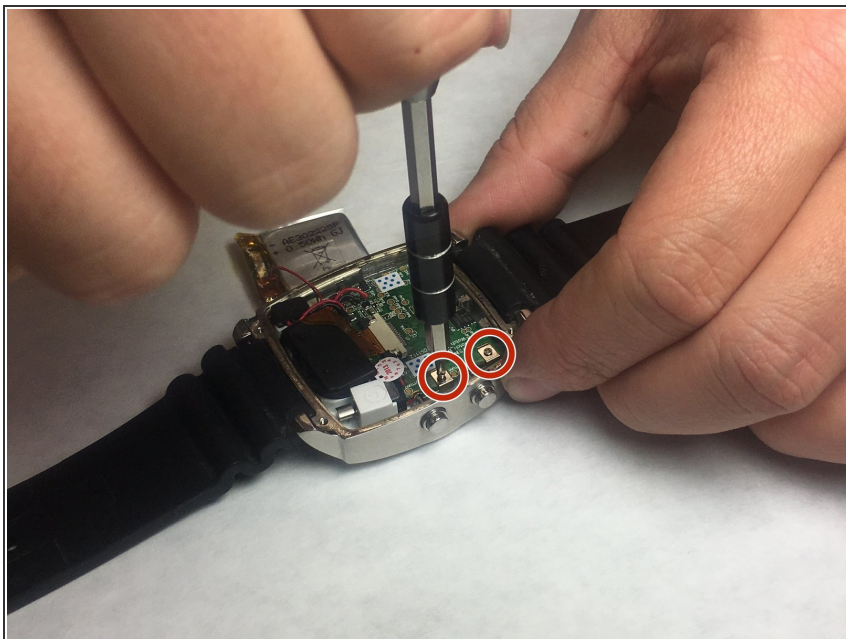
- **i** If not replacing lithium battery, skip down two steps.
- Using the plastic removal tool, pry the battery from the backing plate. The battery is simply attached with glue.

Step 4



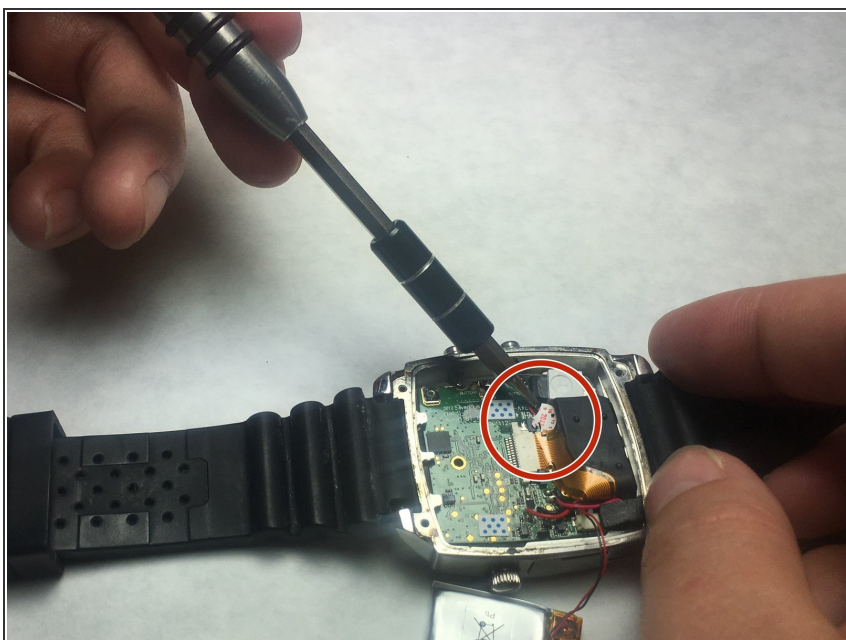
- Desolder the battery connections from the motherboard. Learn how to solder components [here!](#)

Step 5 — Motherboard



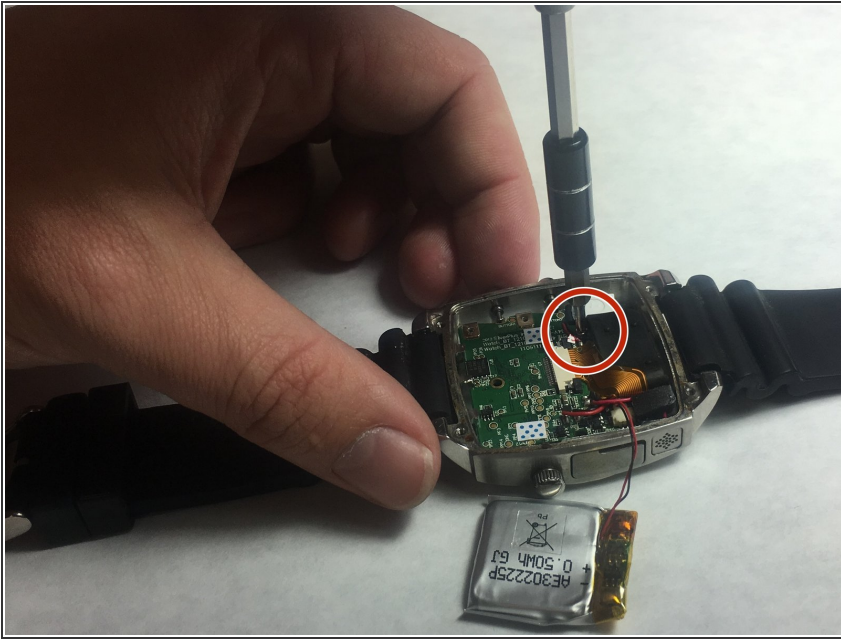
- Use PH00 screw driver to remove two 2.4mm Phillips head screws.

Step 6



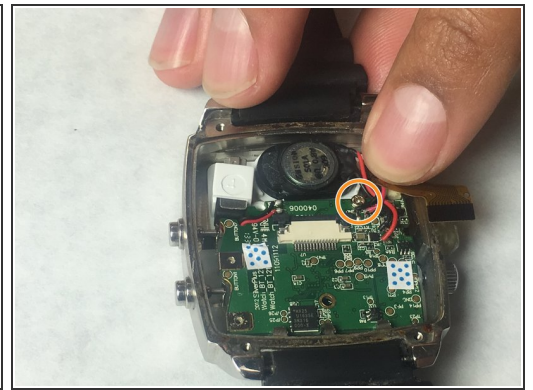
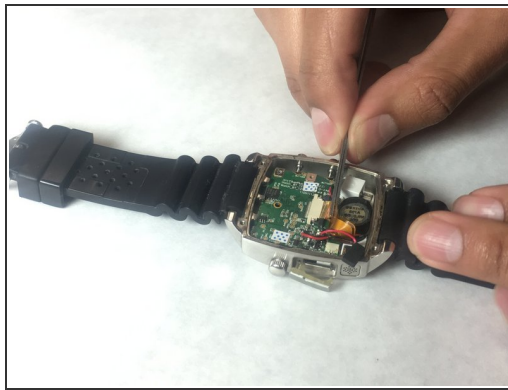
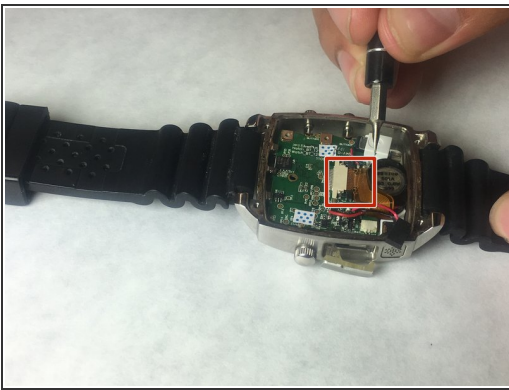
- Use a spudger or tweezers to remove a white sticker that covers a Phillips head screw.

Step 7



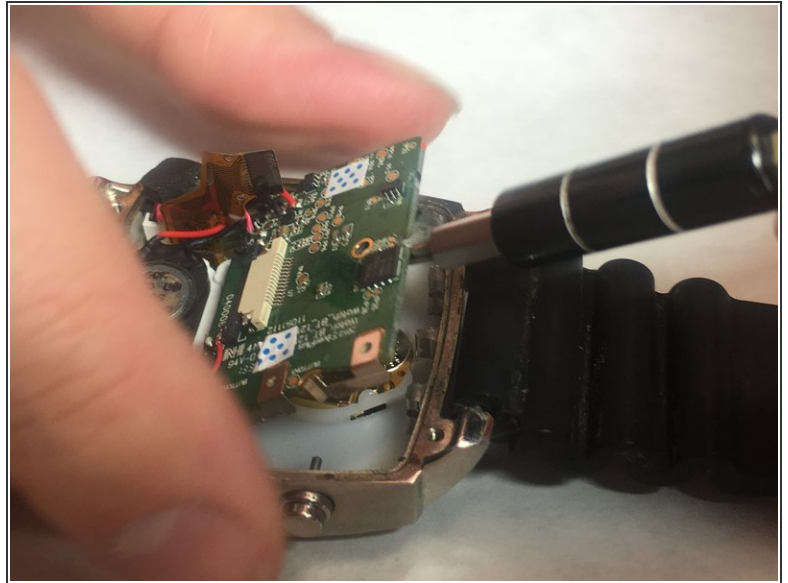
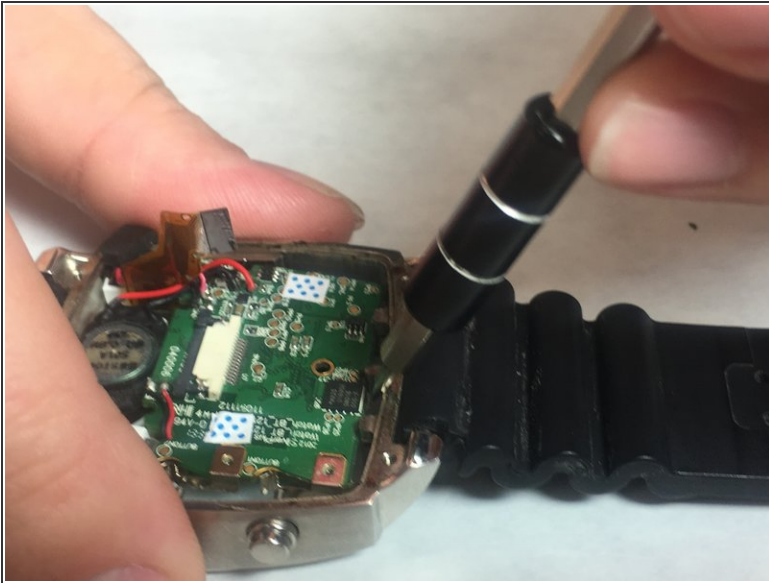
- Use PH00 screwdriver to remove 5.2mm Phillips head screw

Step 8



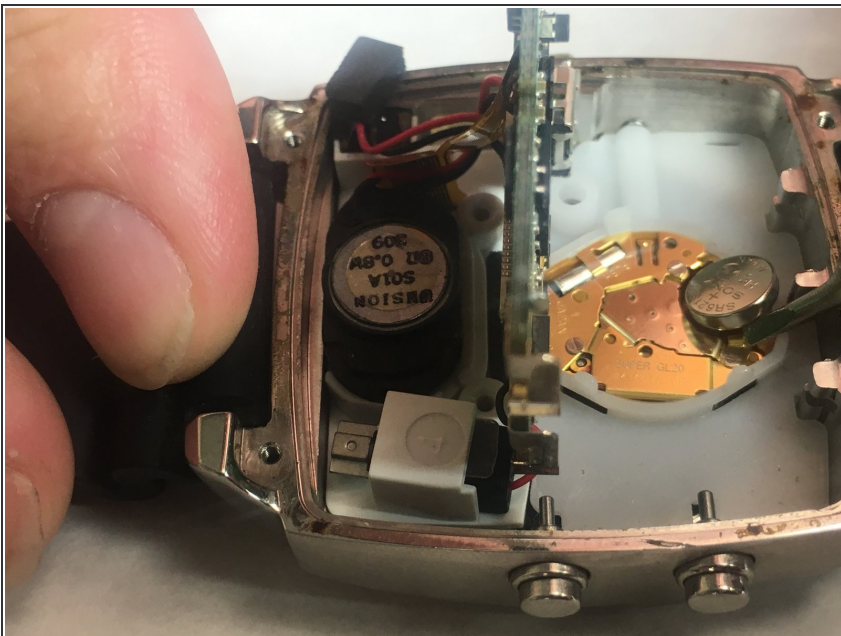
- Use ESD safe tweezers to remove the gold ribbon cable.
- This will expose a second 5.2mm Phillips head screw that can be removed with a PH00 screwdriver.

Step 9



- Use a spudger to gently pry on the motherboard towards the top of the watch, being towards the 12 o'clock position to loosen the motherboard.
- You can now access the parts and pieces on the bottom of, and below the motherboard.

Step 10 — Analog Watch Battery



- Use a spudger to lift the battery from the back case.

To reassemble your device, follow these instructions in reverse order.