



Martian Victory Watch Face Replacement

This guide will allow you to disassemble your Martian Victory Smart Watch in order to replace the Analog Watch Face.

Written By: Robert Sanchez



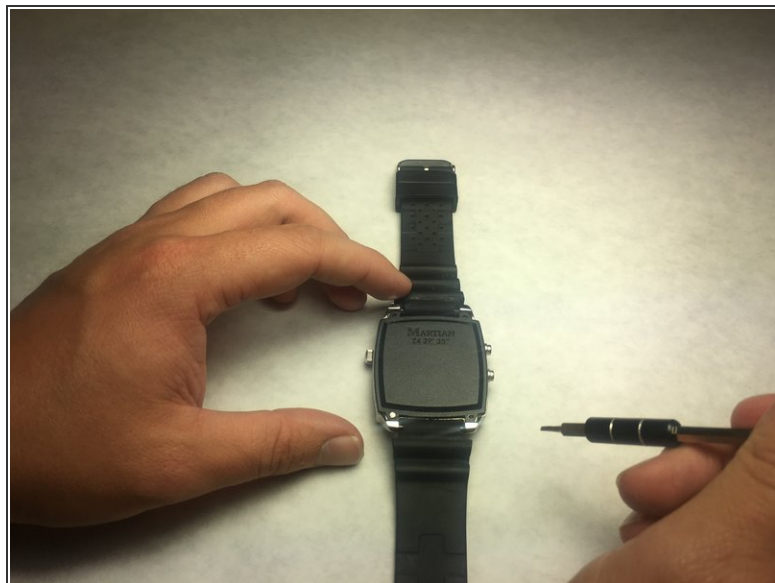
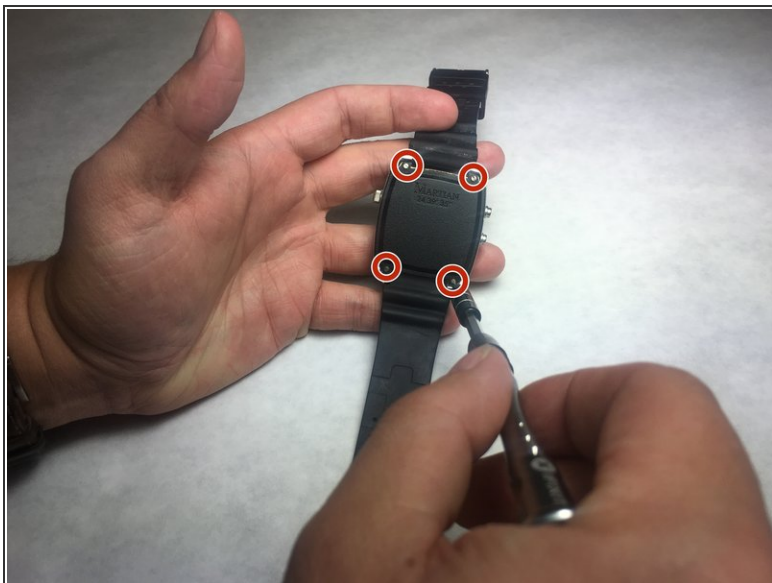
INTRODUCTION

This guide will allow you to disassemble your Martian Victory Smart Watch in order to replace the Analog Watch Face.

TOOLS:

- [Spudger](#) (1)
 - [1.5 mm Flathead Screwdriver](#) (1)
 - [iFixit Opening Tools](#) (1)
 - [Phillips #00 Screwdriver](#) (1)
 - [Tweezers](#) (1)
 - [Phillips #0 Screwdriver](#) (1)
 - [Metal Probe](#) (1)
-

Step 1 — Back Plate



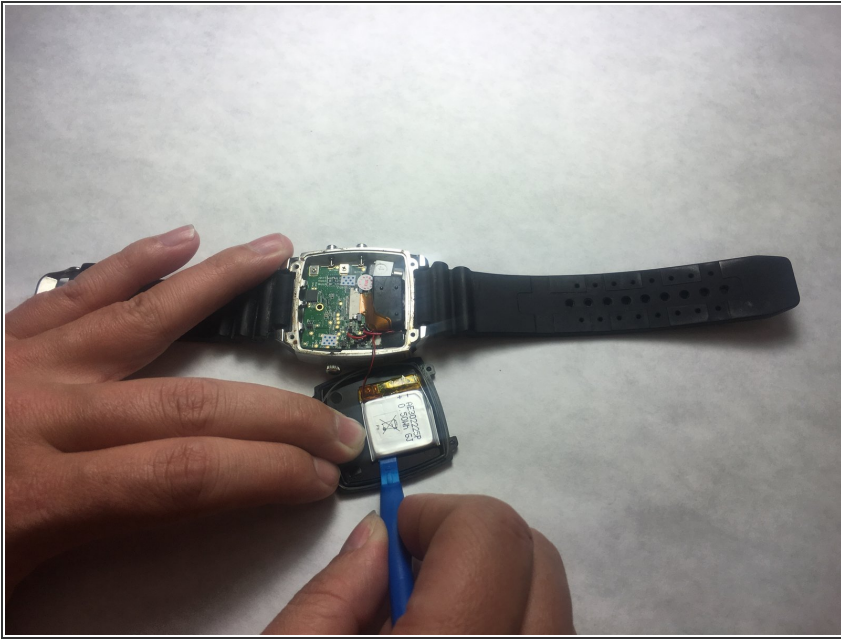
- Unscrew the four 3.4 mm flat head screws

Step 2



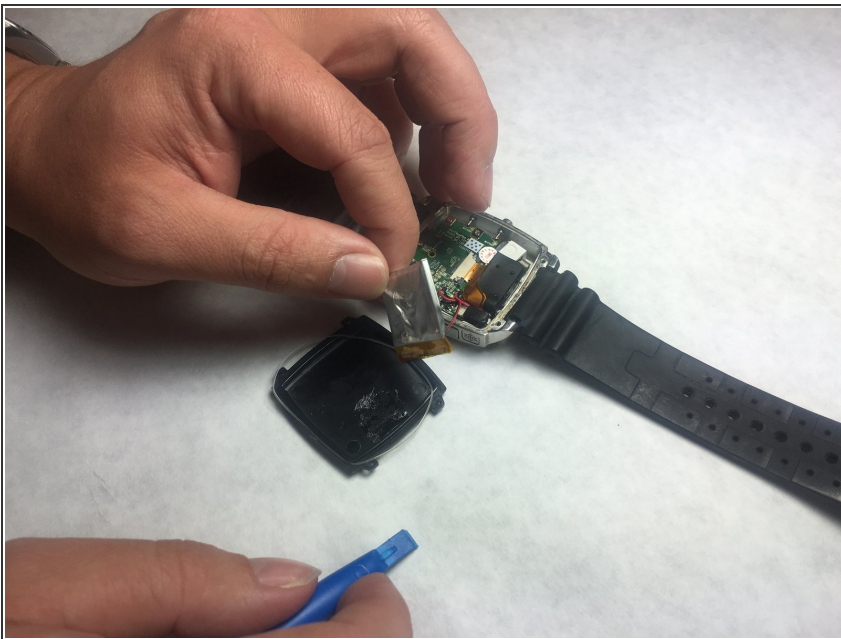
- Carefully lift the back plate off the watch. You will notice a lithium battery and rubber gasket attached to the back plate.

Step 3 — Lithium Battery



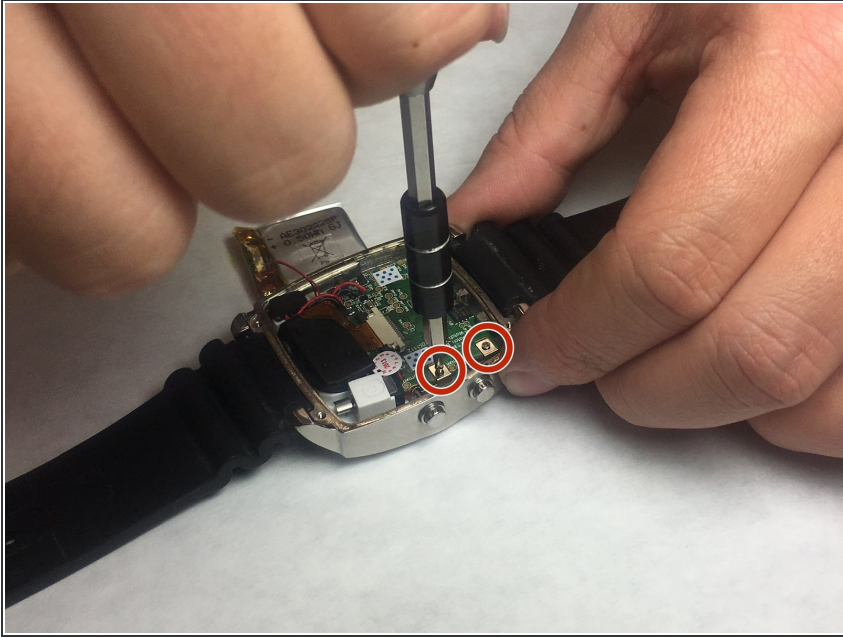
- **i** If not replacing lithium battery, skip down two steps.
- Using the plastic removal tool, pry the battery from the backing plate. The battery is simply attached with glue.

Step 4



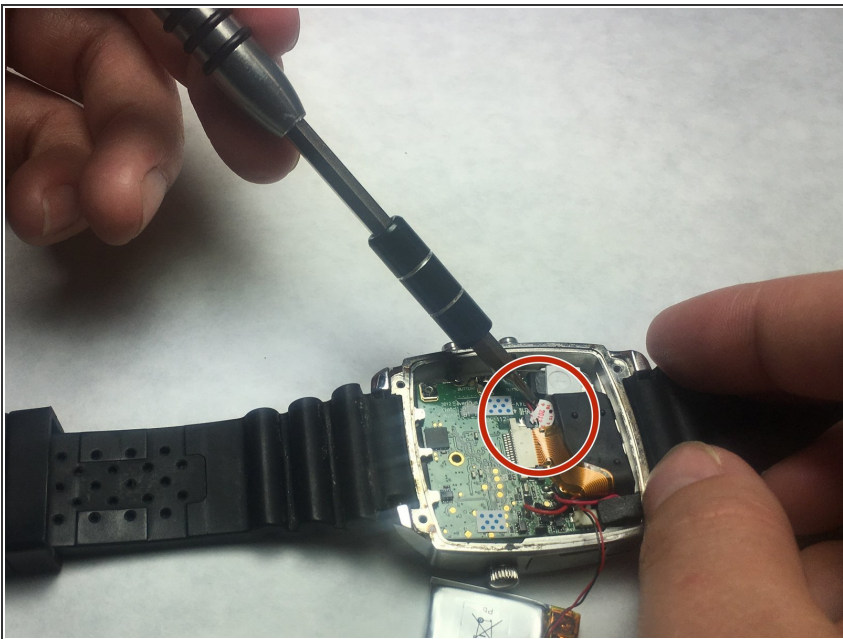
- Desolder the battery connections from the motherboard. Learn how to solder components [here!](#)

Step 5 — Motherboard



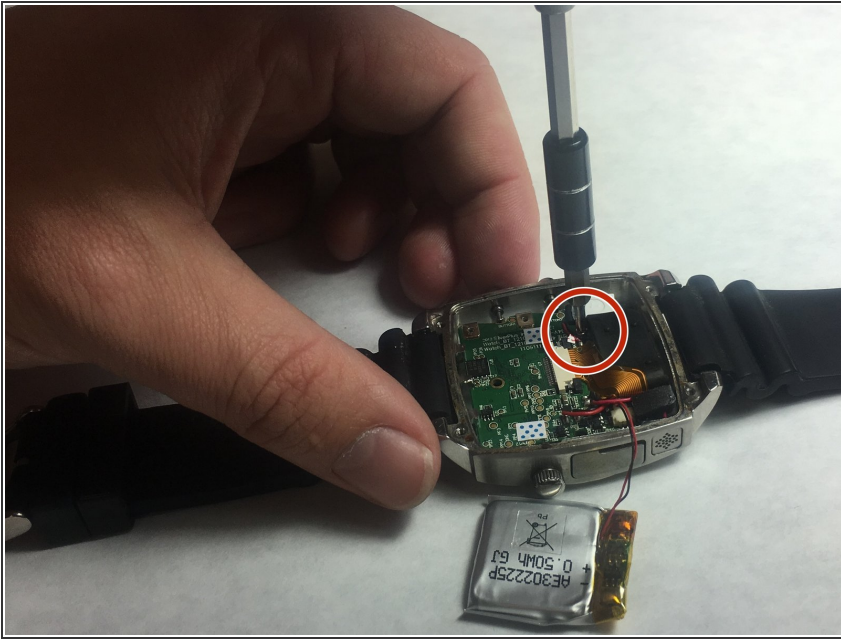
- Use PH00 screw driver to remove two 2.4mm Phillips head screws.

Step 6



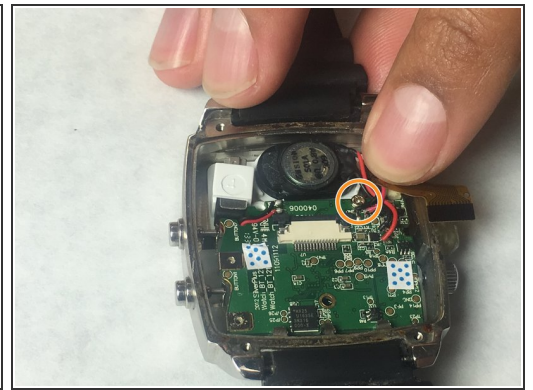
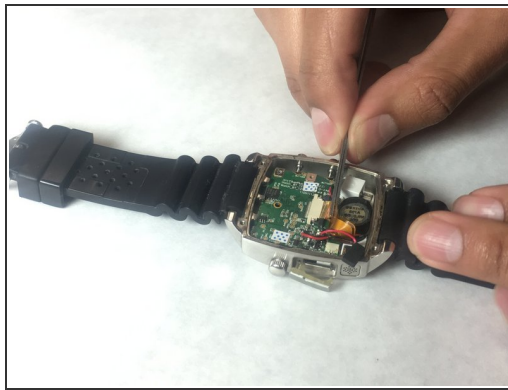
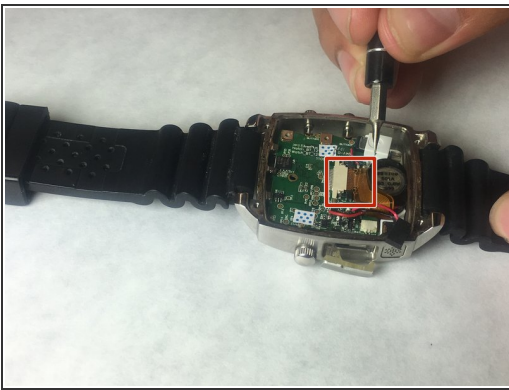
- Use a spudger or tweezers to remove a white sticker that covers a Phillips head screw.

Step 7



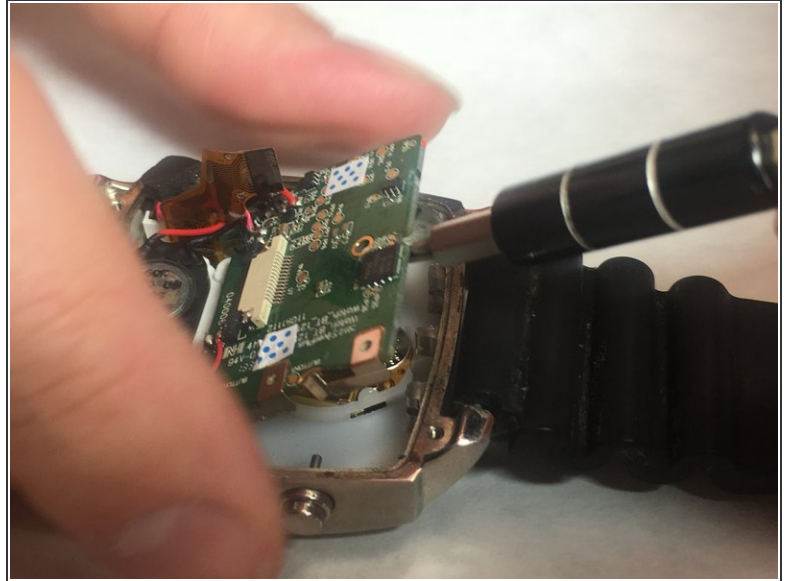
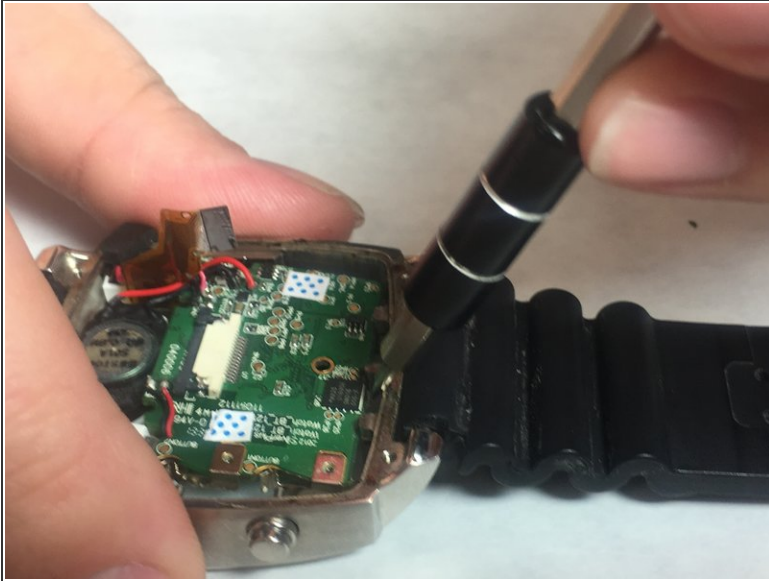
- Use PH00 screwdriver to remove 5.2mm Phillips head screw

Step 8



- Use ESD safe tweezers to remove the gold ribbon cable.
- This will expose a second 5.2mm Phillips head screw that can be removed with a PH00 screwdriver.

Step 9



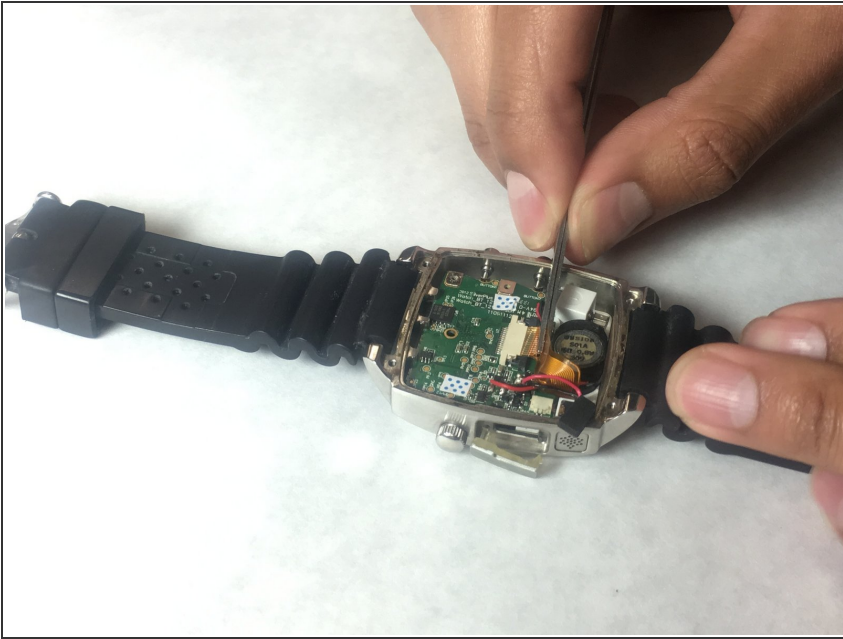
- Use a spudger to gently pry on the motherboard towards the top of the watch, being towards the 12 o'clock position to loosen the motherboard.
- You can now access the parts and pieces on the bottom of, and below the motherboard.

Step 10 — LED Screen



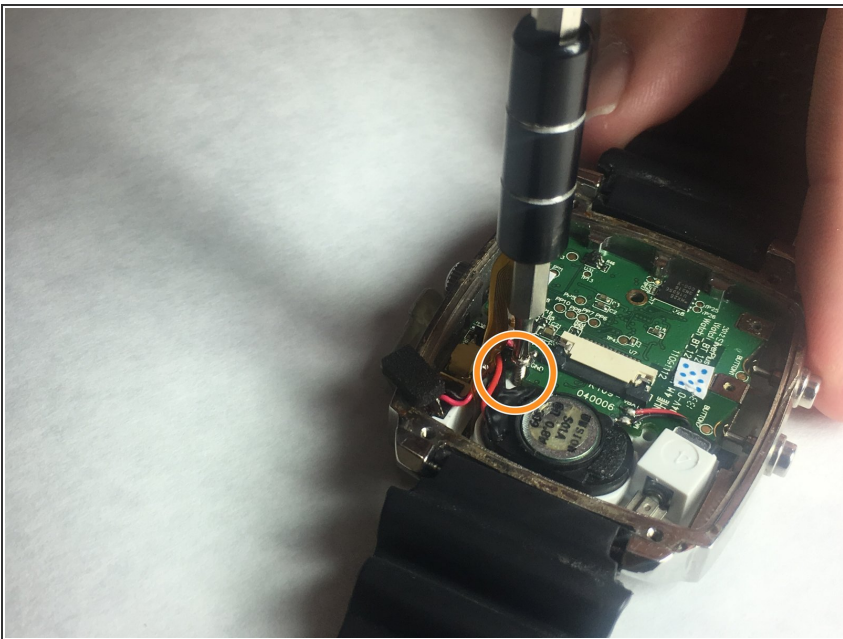
- Locate the ribbon connection, and use remove the clips holding the strip on each side using needle tool.

Step 11



- With a pair of tweezers, carefully remove the ribbon strip connection.

Step 12



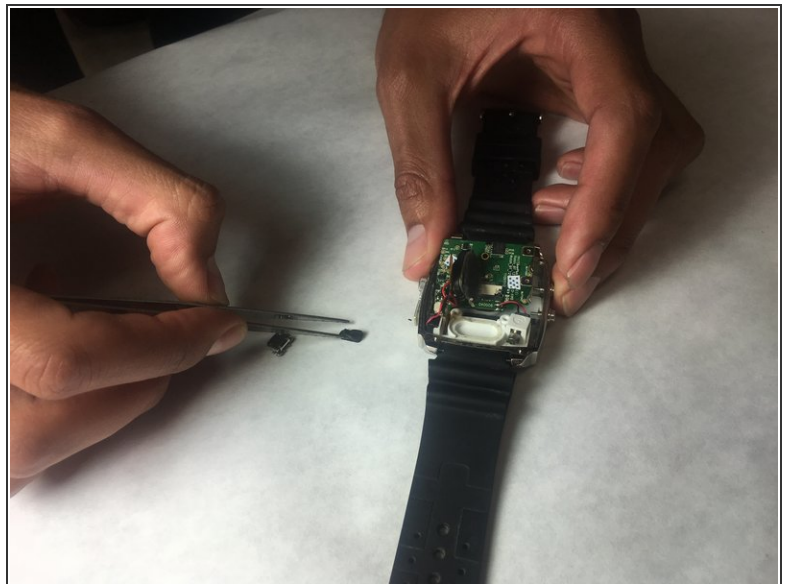
- Remove the screw driver holding the LED screen and Speaker in place.

Step 13



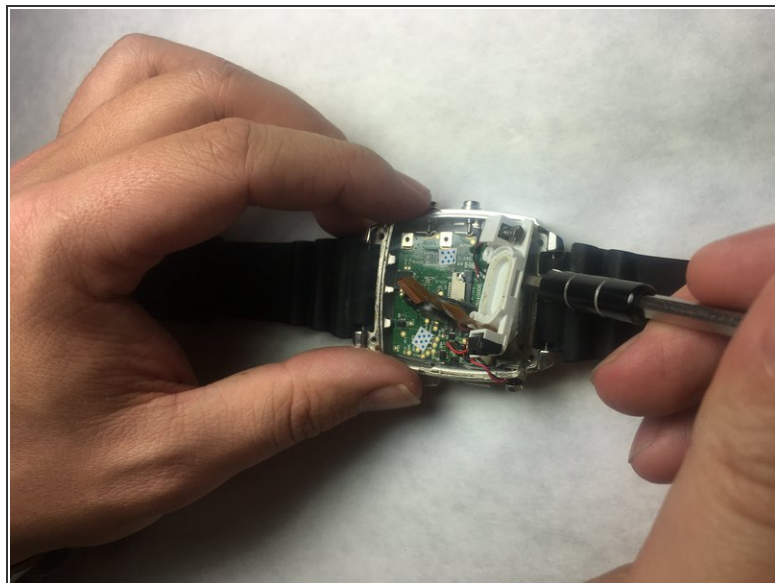
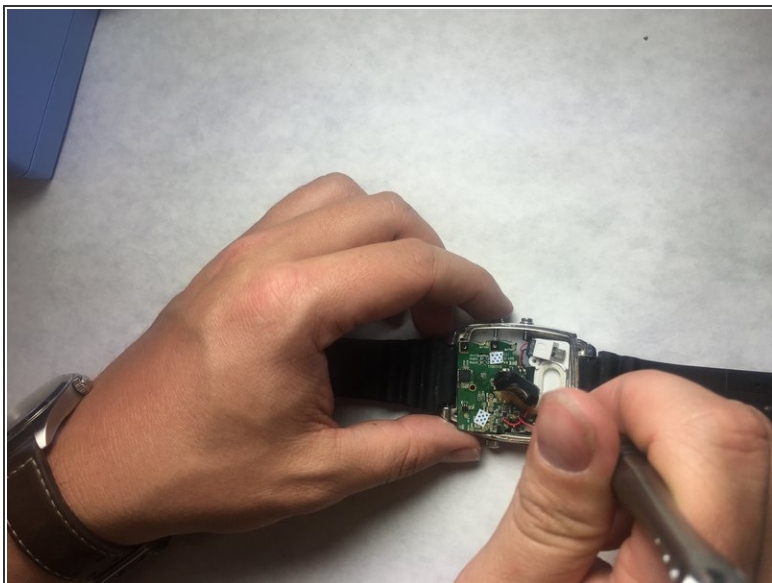
- Insert a small flat screw driver under the speaker in order to remove it.

Step 14



- Using tweezers, remove the speaker and move off to the side.

Step 15



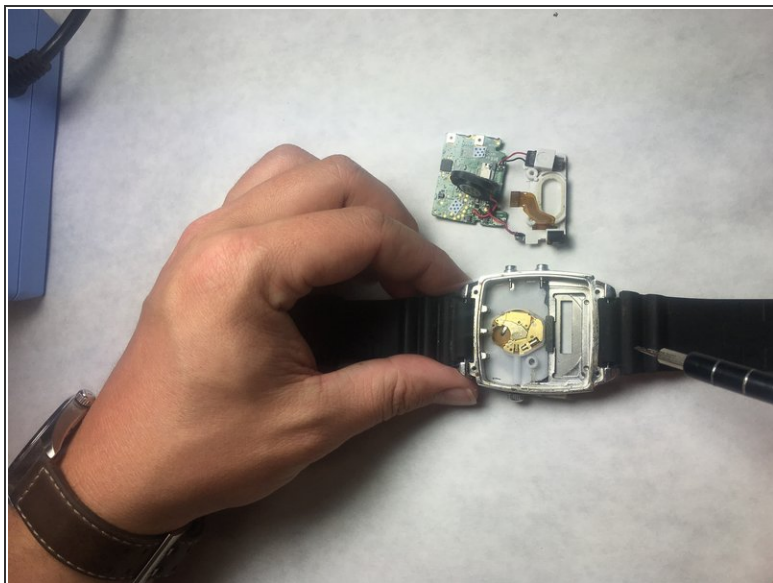
- Place a small flat head screwdriver under the LED screen, and carefully push it out of it's socket.

Step 16



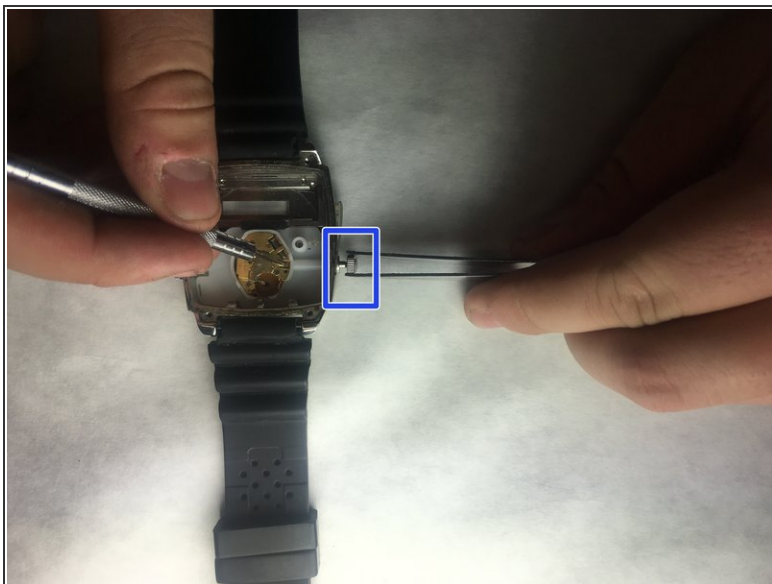
- Remove final connection to accelerometer. The LED screen is now separated from the device.

Step 17 — Watch Face



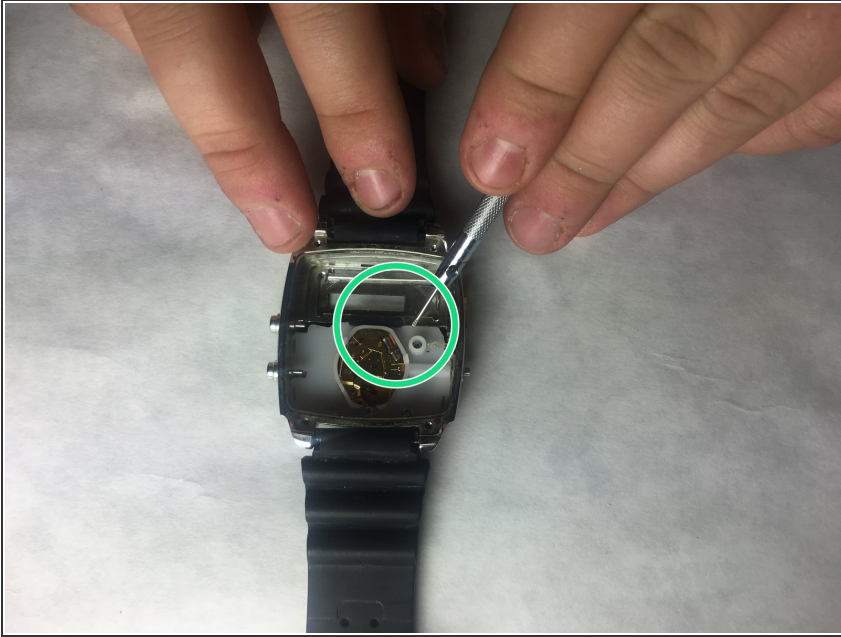
- Grab the motherboard with tweezers and remove from watch cavity.

Step 18



- Stabilize watch with the metal probe. Place tweezers around crown and pull outward, so that the crown can be removed.

Step 19



- Insert the spudger under plastic panel cover in order to access watch face.

Step 20



- Insert a spudger under the black watch face. Gently push up, so that it can be raised out of the watch.
- Use tweezers or pin tool in order to remove from watch.

To reassemble your device, follow these instructions in reverse order.