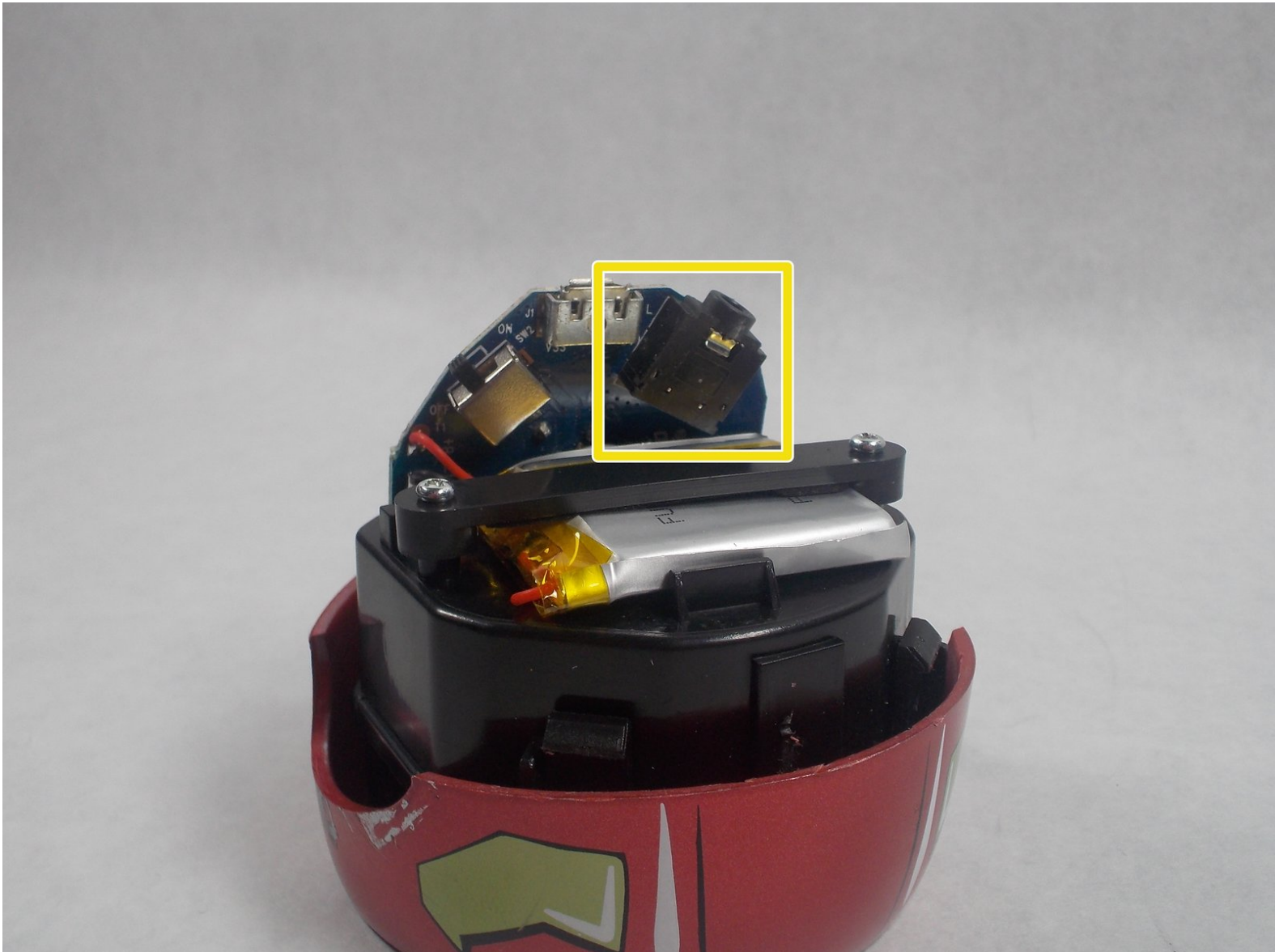




Marvel iHome MR-M66 Auxiliary Port Replacement

This guide will show you how to replace the auxiliary port on the Iron Man iHome MR-M66.

Written By: Tyler Jacob



INTRODUCTION

This guide explains all the steps for taking apart the device, taking out the old auxiliary port from the device and soldering on a new one. This guide requires basic soldering knowledge and if done improperly may cause injury to the user. People with physical hand or wrist disabilities be cautioned that you may need to consider asking someone else to replace the part for you so you do not injure yourself.



TOOLS:

- [Phillips #0 Screwdriver](#) (1)
 - [iFixit Opening Tools](#) (1)
 - [Metal Spudger](#) (1)
 - [Portable Soldering Iron](#) (1)
-

Step 1 — Back Cover



- On the bottom of the device, remove the three screws shown.
- Leave one screw partially in the socket to remove the bottom cover easier.

Step 2



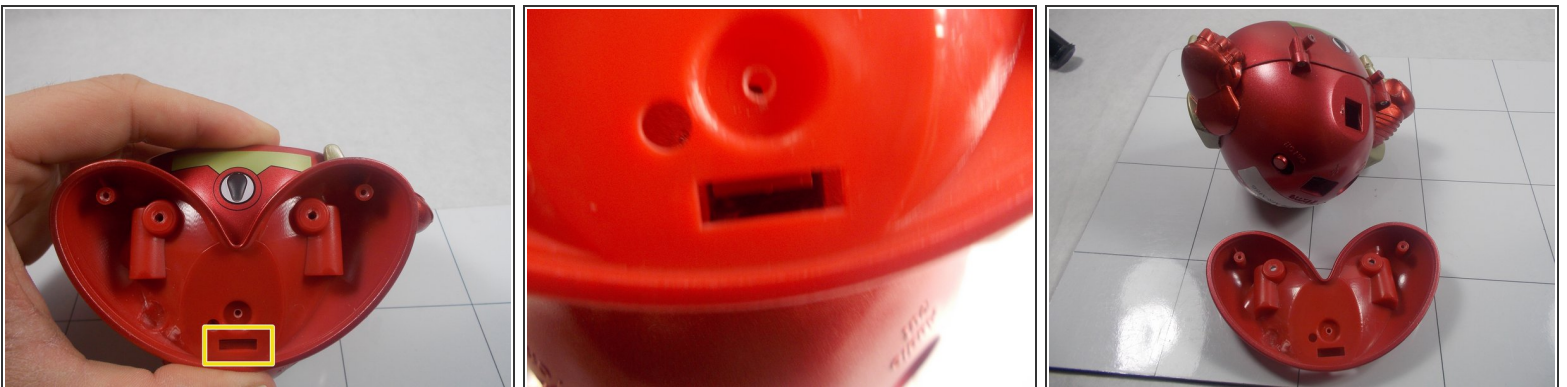
- Remove the bottom cover by either pulling on the screw or using a plastic opening tool to pry the cover off.

Step 3



- Remove the two screws as shown.

Step 4



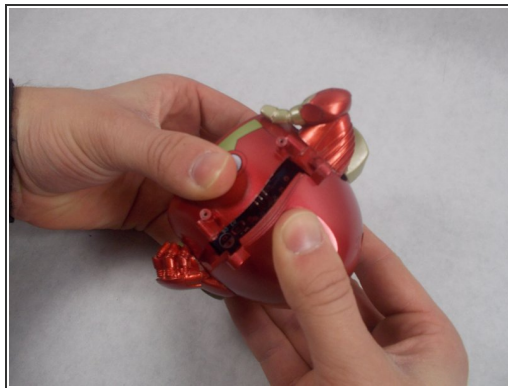
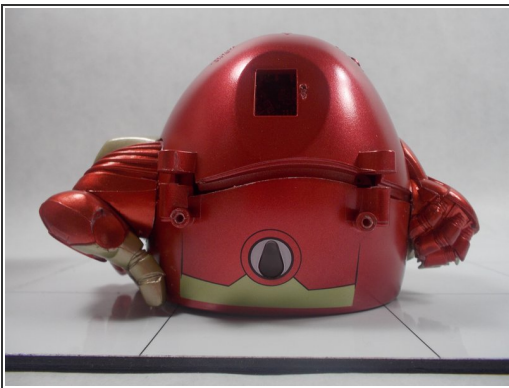
- Use a spudger to release the small retaining clip that holds the feet to the bottom of the device.
⚠ Try to be careful here, as too much force can break the clip.

Step 5



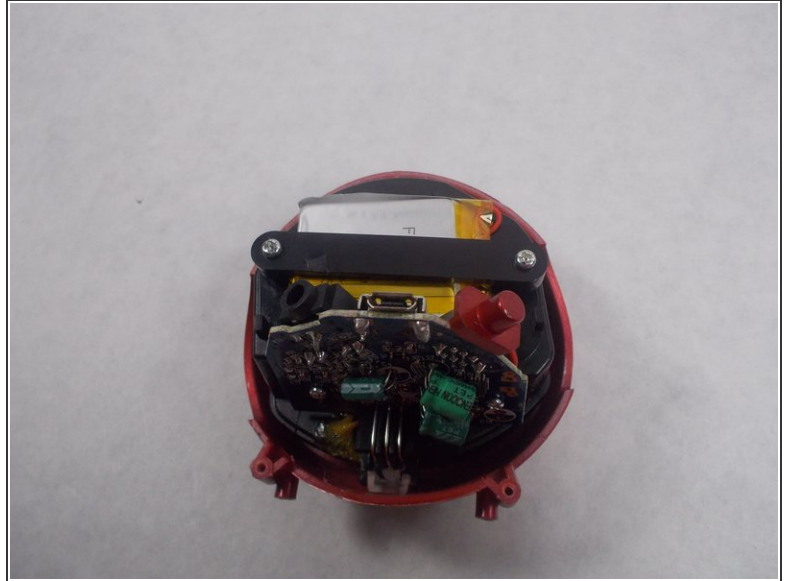
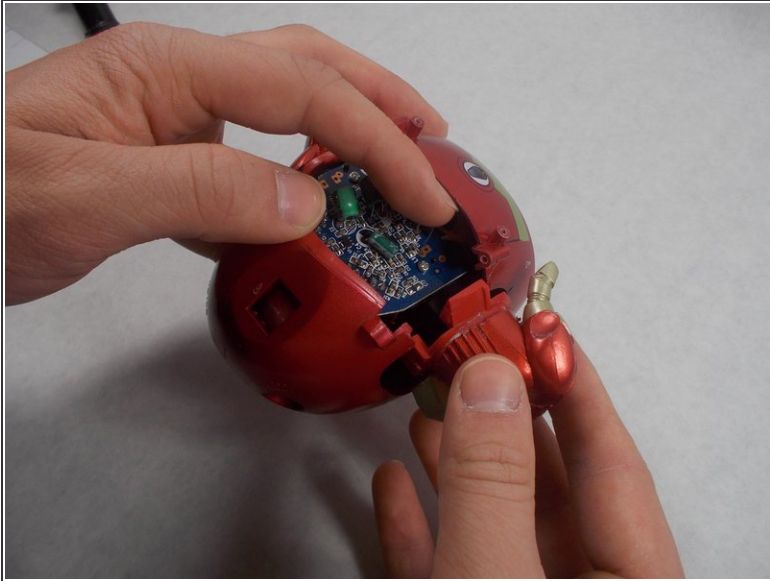
- With the feet now off, remove the two screws shown from the back of the device.

Step 6



- Using a plastic opening tool, separate the front and back cover from each other.
 - ⓘ This step requires the most time and patience, so be careful.
- Starting from the bottom, use the plastic opening tool to create the initial separation and continue along the seam to the top of the device.
 - Alternate between using the plastic opening tool and your hand to create the separation.
 - ⓘ The power switch will most likely come loose during this step and you will hear something rattling inside the device.

Step 7



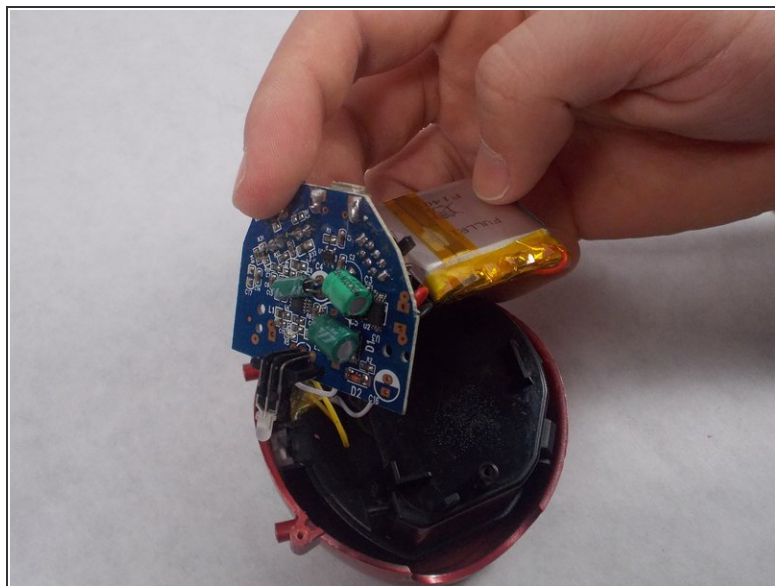
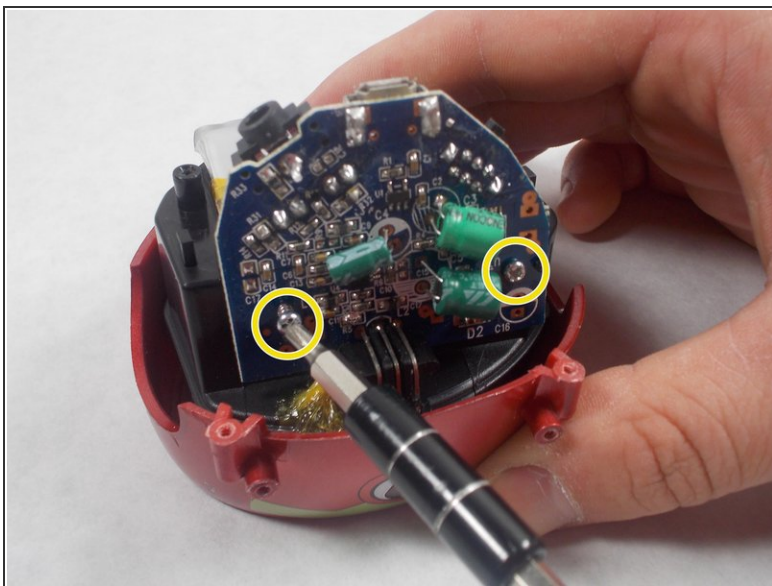
- Once a significant separation has been created, remove the two arms from either side of the device.
 - ⓘ They are not fixed to the body itself so you should be able to wiggle them free.
- Once the arms are out, continue pulling the back cover off the device.
- Remove the power switch cover.

Step 8 — Auxiliary Port



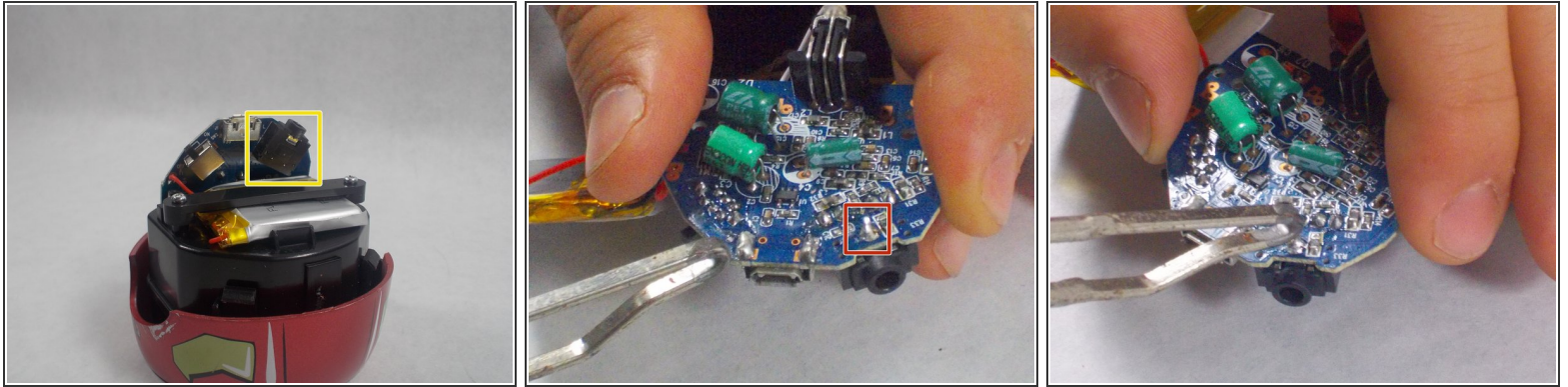
- Remove the two screws shown to access the battery.

Step 9



- Remove the two screws shown to release the circuitboard.
- Gently remove both the battery and circuitboard.
- ⓘ They will be attached together by the battery's wires.

Step 10



- Locate the auxiliary port on the top side of the circuitboard.
- On the bottom of the circuitboard, locate the metal pin connecting the auxiliary port to the circuitboard.
- Use the soldering iron to disconnect the pin.
- Use a pair of tweezers to remove the old auxiliary port.
- Place the new auxiliary port in the same spot and solder the port to the circuitboard.

To reassemble your device, follow these instructions in reverse order.