



Marvel iHome MR-M66 Charging Port Replacement

This guide will demonstrate how to access and replace this device's charging port.

Written By: Aaram Williams



INTRODUCTION

This guide will show how to remove and replace the device's charging port. To complete this successfully, all the listed tools must be obtained and the listed steps must be strictly followed in order. Experience with soldering is required.



TOOLS:

- [Metal Spudger](#) (1)
 - [Phillips #0 Screwdriver](#) (1)
 - [iFixit Opening Tools](#) (1)
 - [Tweezers](#) (1)
 - [Soldering Iron](#) (1)
 - [Solder](#) (1)
 - [Magnetic Project Mat](#) (1)
-

Step 1 — Back Cover



- On the bottom of the device, remove the three screws shown.
- Leave one screw partially in the socket to remove the bottom cover easier.

Step 2



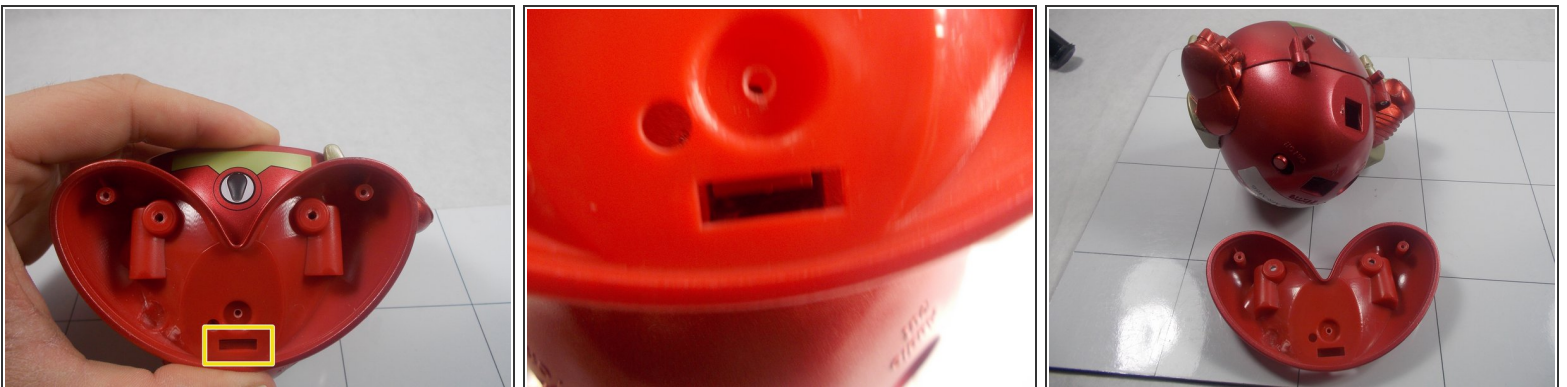
- Remove the bottom cover by either pulling on the screw or using a plastic opening tool to pry the cover off.

Step 3



- Remove the two screws as shown.

Step 4



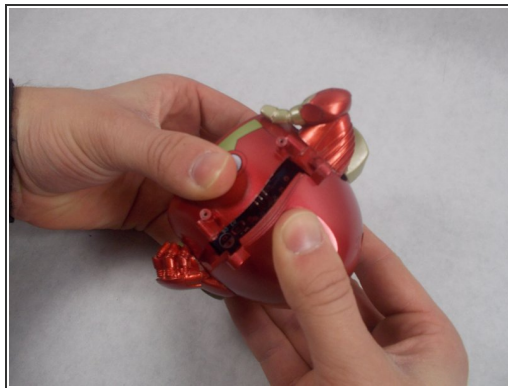
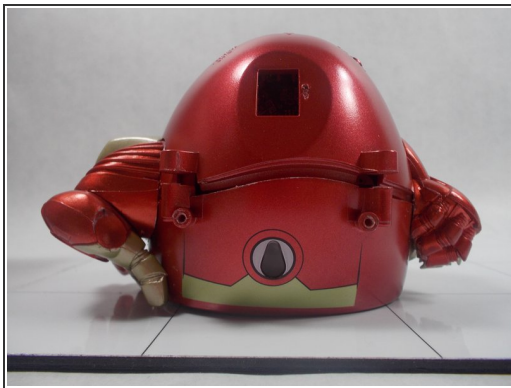
- Use a spudger to release the small retaining clip that holds the feet to the bottom of the device.
⚠ Try to be careful here, as too much force can break the clip.

Step 5



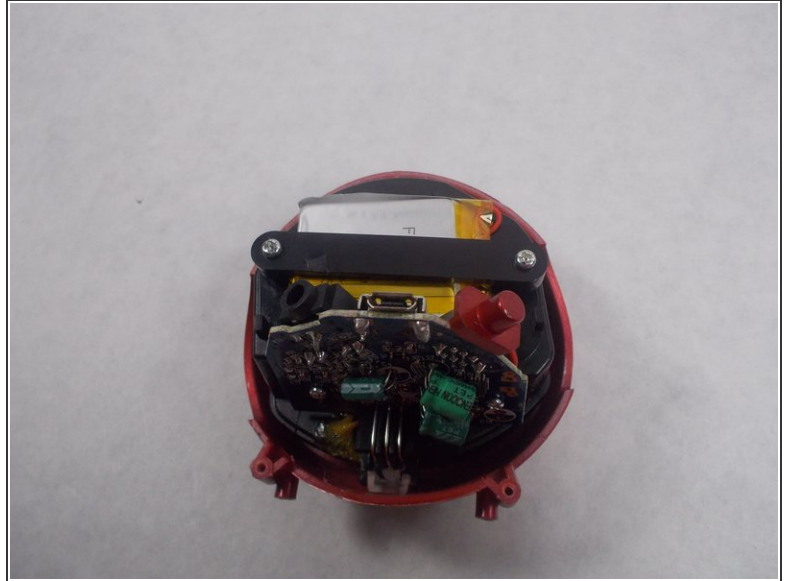
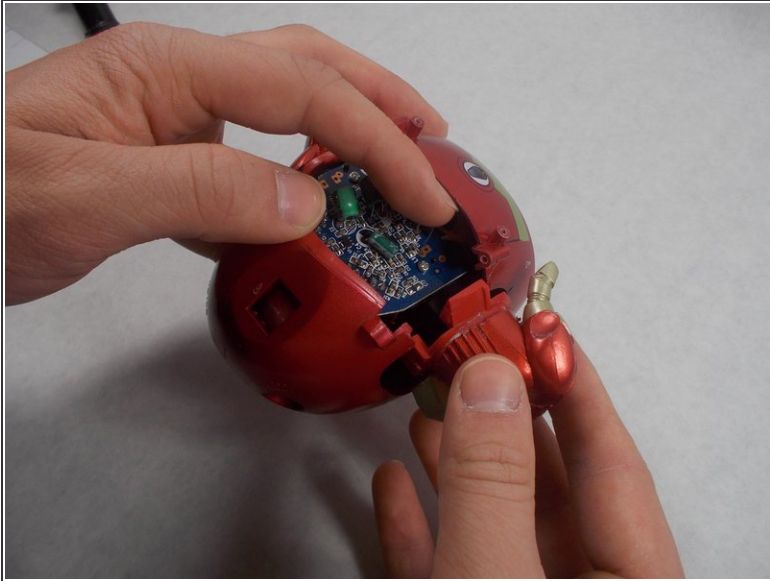
- With the feet now off, remove the two screws shown from the back of the device.

Step 6



- Using a plastic opening tool, separate the front and back cover from each other.
 - ⓘ This step requires the most time and patience, so be careful.
- Starting from the bottom, use the plastic opening tool to create the initial separation and continue along the seam to the top of the device.
 - Alternate between using the plastic opening tool and your hand to create the separation.
 - ⓘ The power switch will most likely come loose during this step and you will hear something rattling inside the device.

Step 7



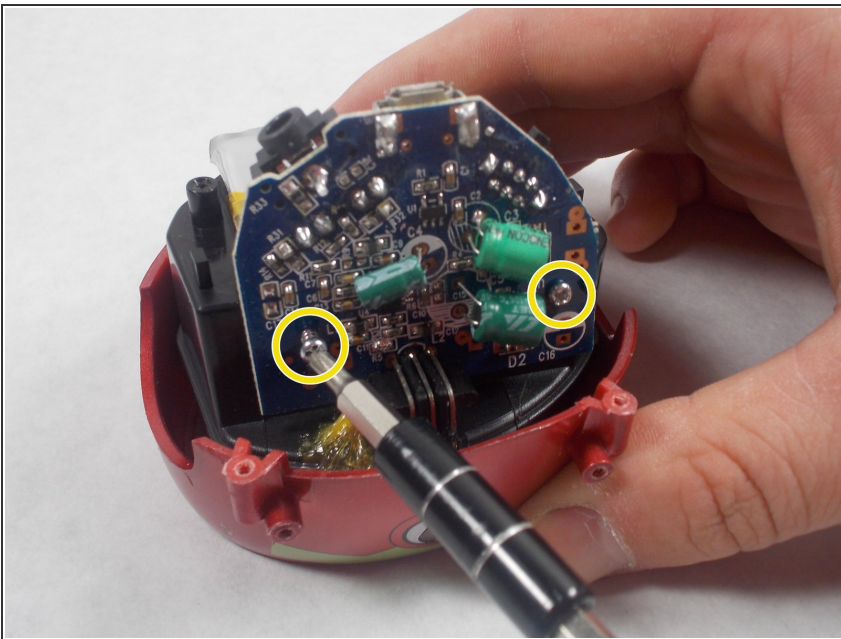
- Once a significant separation has been created, remove the two arms from either side of the device.
 - ⓘ They are not fixed to the body itself so you should be able to wiggle them free.
- Once the arms are out, continue pulling the back cover off the device.
- Remove the power switch cover.

Step 8 — Charging Port



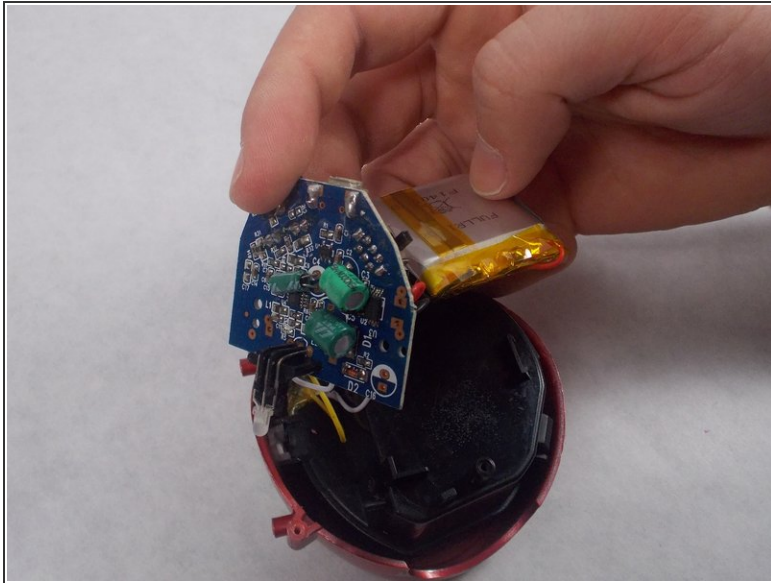
- Remove the two screws shown to remove the battery.

Step 9



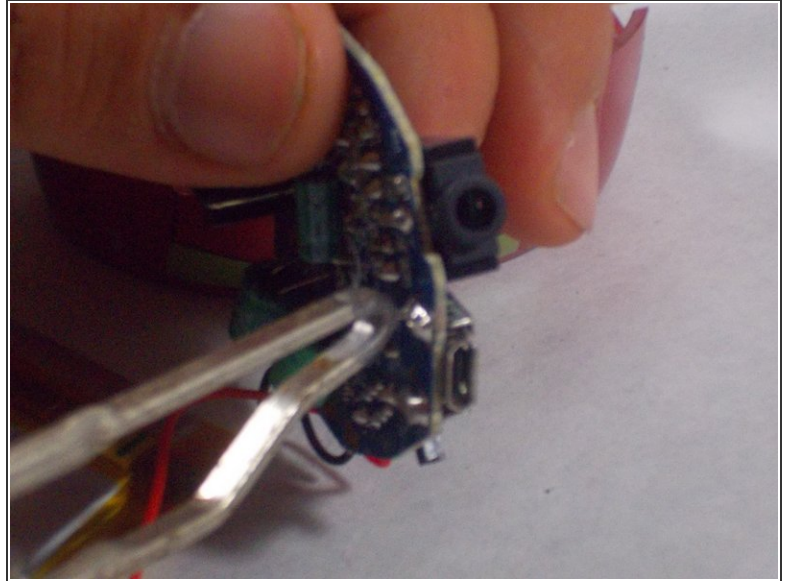
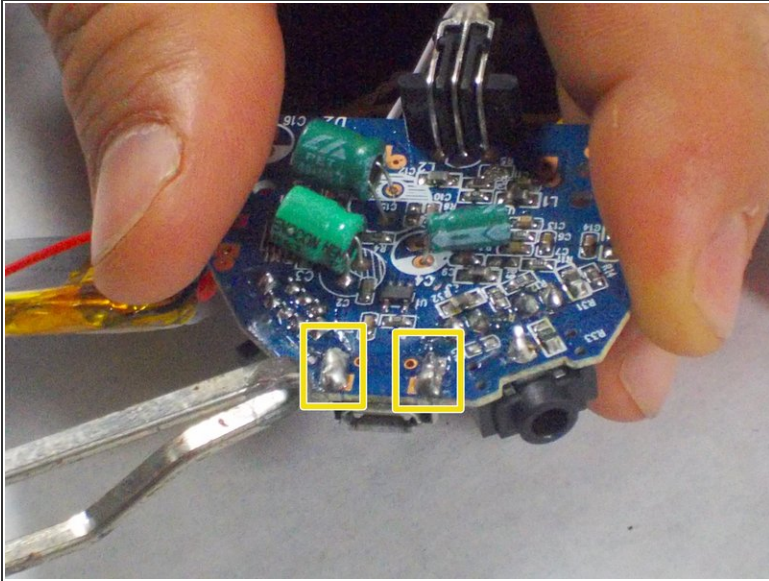
- Remove the two screws shown to remove the circuitboard.

Step 10



- Remove the battery and circuitboard.
 - ⓘ They will be attached together by the battery's wires.
- Locate the charging port on the edge of the top side of the circuitboard.

Step 11



- Locate the 4 metal pins on the bottom of the circuitboard connecting the charging port to the circuitboard.
- Use the soldering iron to disconnect the pins.
- Use a pair of tweezers to remove the old charging port.
- Place the new charging port in the same spot and solder the port to the circuitboard.

To reassemble your device, follow these instructions in reverse order.