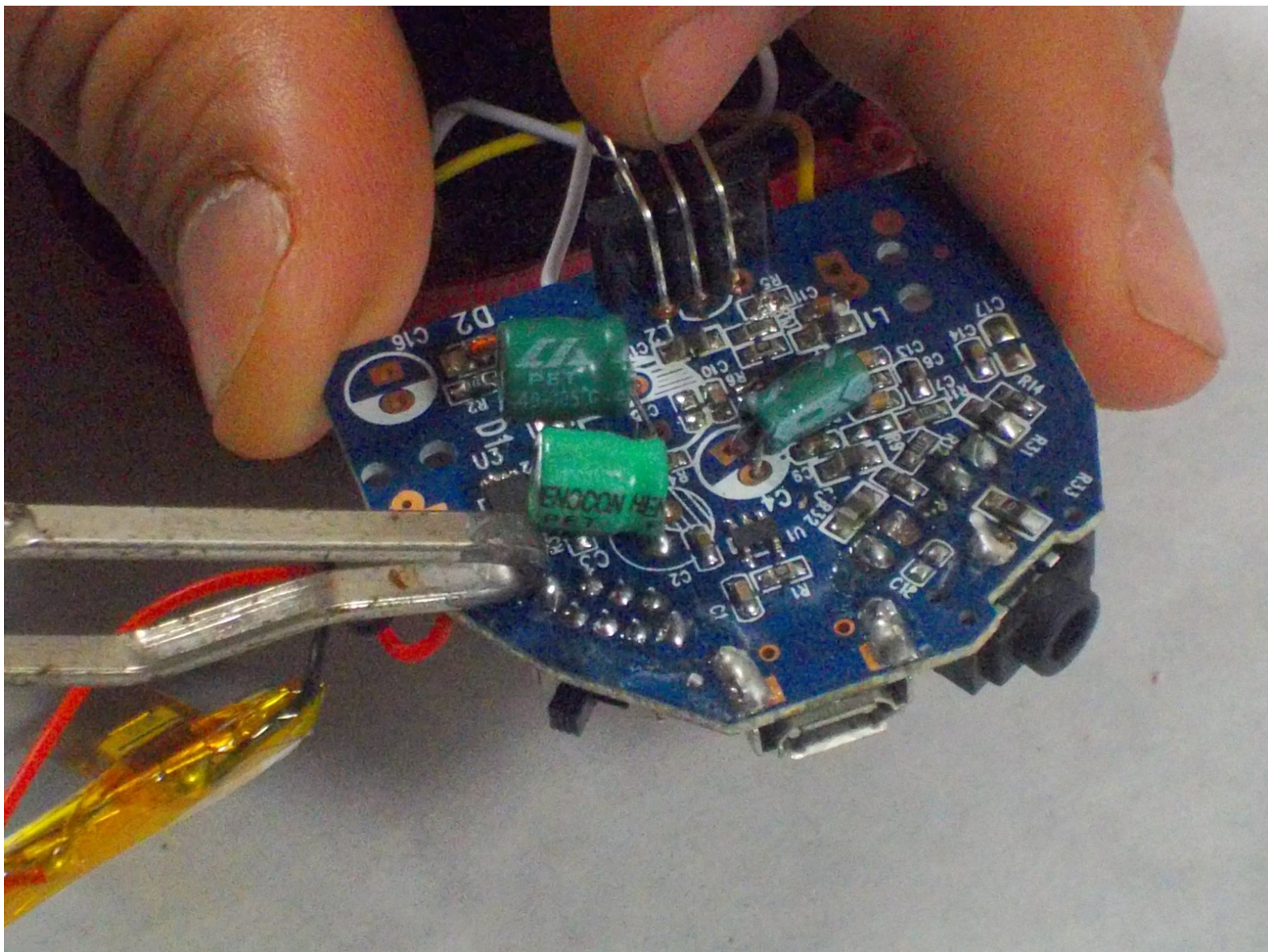




Marvel iHome MR-M66 Power Switch Cover Replacement

Replace the power switch cover of the Marvel iHome MR-M66.

Written By: Aaram Williams



INTRODUCTION

This guide will demonstrate how to access and replace the power switch cover of the Marvel iHome MR-M66.

TOOLS:

- [Phillips #0 Screwdriver](#) (1)
 - [iFixit Opening Tools](#) (1)
 - [Metal Spudger](#) (1)
 - [Soldering Iron](#) (1)
 - [Solder](#) (1)
-

Step 1 — Back Cover



- On the bottom of the device, remove the three screws shown.
- Leave one screw partially in the socket to remove the bottom cover easier.

Step 2



- Remove the bottom cover by either pulling on the screw or using a plastic opening tool to pry the cover off.

Step 3



- Remove the two screws as shown.

Step 4



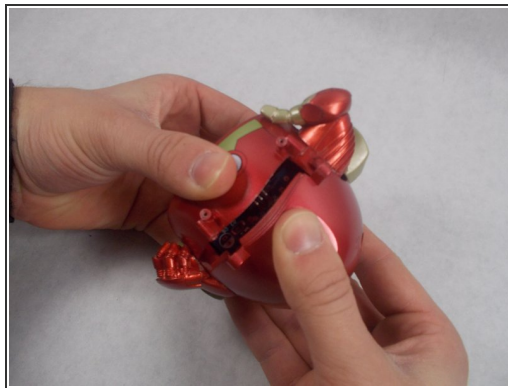
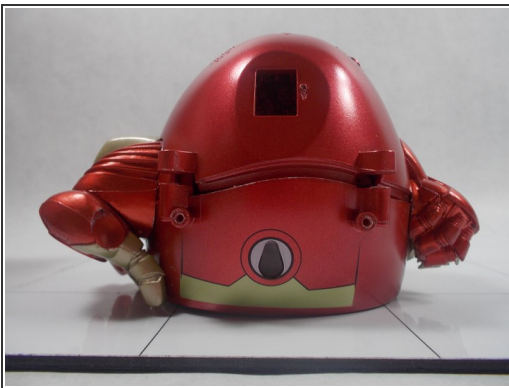
- Use a spudger to release the small retaining clip that holds the feet to the bottom of the device.
⚠ Try to be careful here, as too much force can break the clip.

Step 5



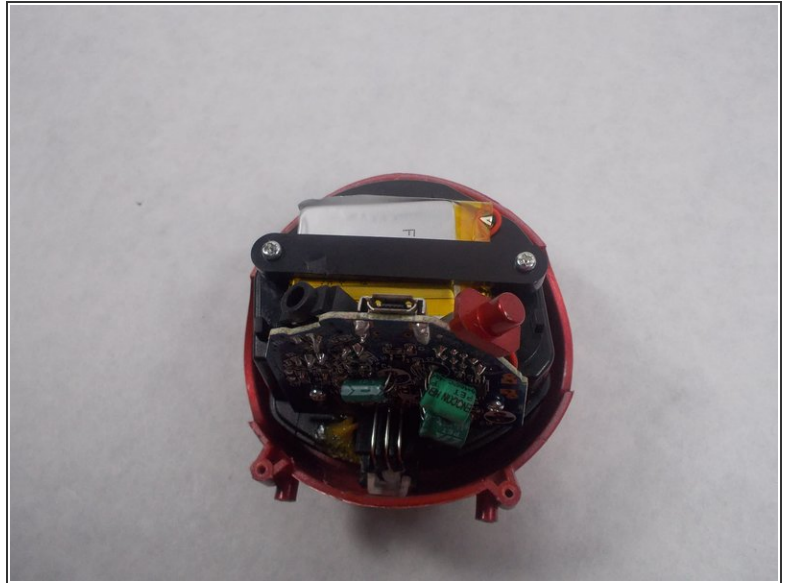
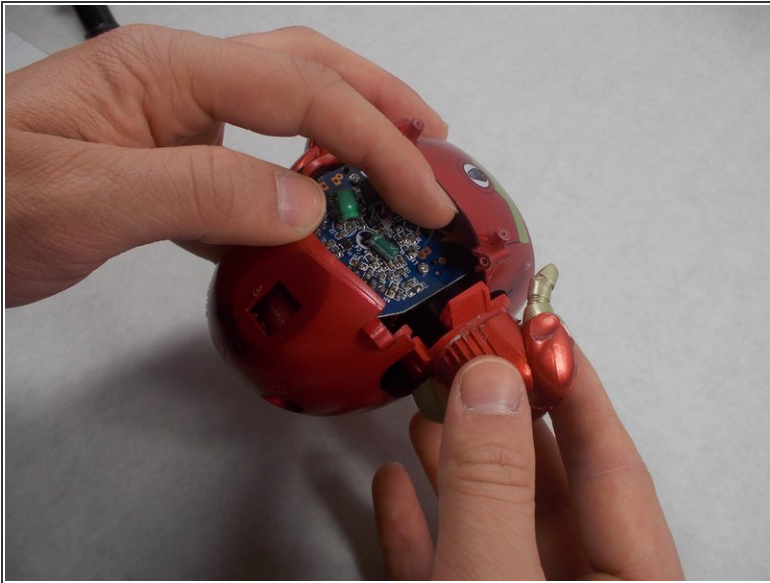
- With the feet now off, remove the two screws shown from the back of the device.

Step 6



- Using a plastic opening tool, separate the front and back cover from each other.
 - ⓘ This step requires the most time and patience, so be careful.
- Starting from the bottom, use the plastic opening tool to create the initial separation and continue along the seam to the top of the device.
 - Alternate between using the plastic opening tool and your hand to create the separation.
 - ⓘ The power switch will most likely come loose during this step and you will hear something rattling inside the device.

Step 7



- Once a significant separation has been created, remove the two arms from either side of the device.
 - ⓘ They are not fixed to the body itself so you should be able to wiggle them free.
- Once the arms are out, continue pulling the back cover off the device.
- Remove the power switch cover.

To reassemble your device, follow these instructions in reverse order.