



# Marvel iHome MR-M66 Speaker Assembly Replacement

Using this guide, you will be able to replace the entire front plate and speaker assembly of the device.

Written By: Tyler Jacob



## INTRODUCTION

Taking the speaker out and replacing it with a new one requires work with small wires. If you have a physical disorder that makes your hands shake, this guide will be much more difficult, and you might want to consider asking someone to replace the speaker assembly for you. Also, the device should be powered off the whole time you are working on the device. Leaving the device on may allow you to become shocked by an electrical current.



### TOOLS:

- [Phillips #0 Screwdriver](#) (1)
  - [iFixit Opening Tools](#) (1)
  - [Metal Spudger](#) (1)
  - [Flush Wire Cutters](#) (1)
  - [Electrical Tape in 6 Assorted Colors](#) (1)
  - [Wire stripper/crimping tool](#) (1)
-

## Step 1 — Back Cover



- On the bottom of the device, remove the three screws shown.
- Leave one screw partially in the socket to remove the bottom cover easier.

## Step 2



- Remove the bottom cover by either pulling on the screw or using a plastic opening tool to pry the cover off.

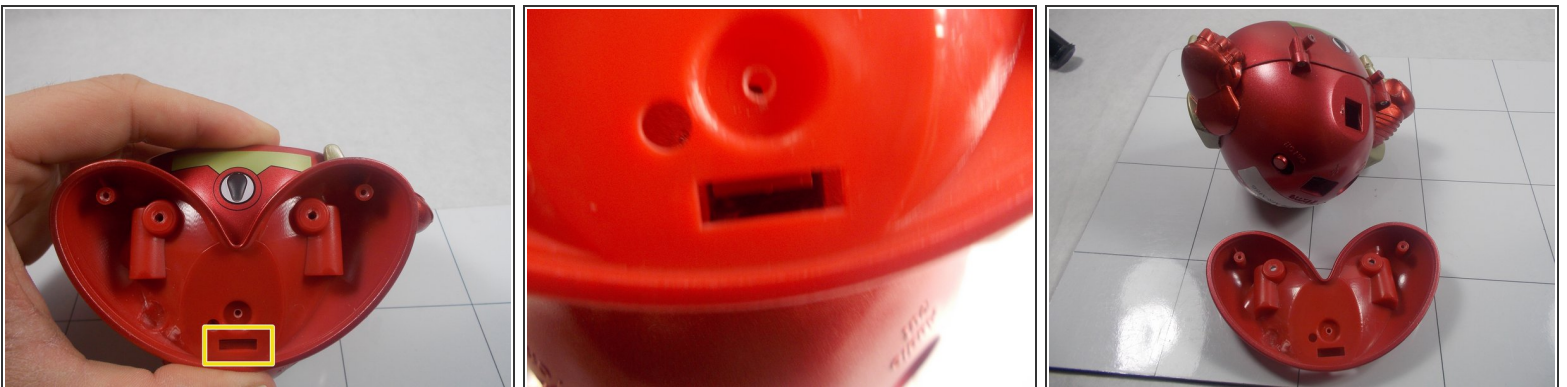


### Step 3



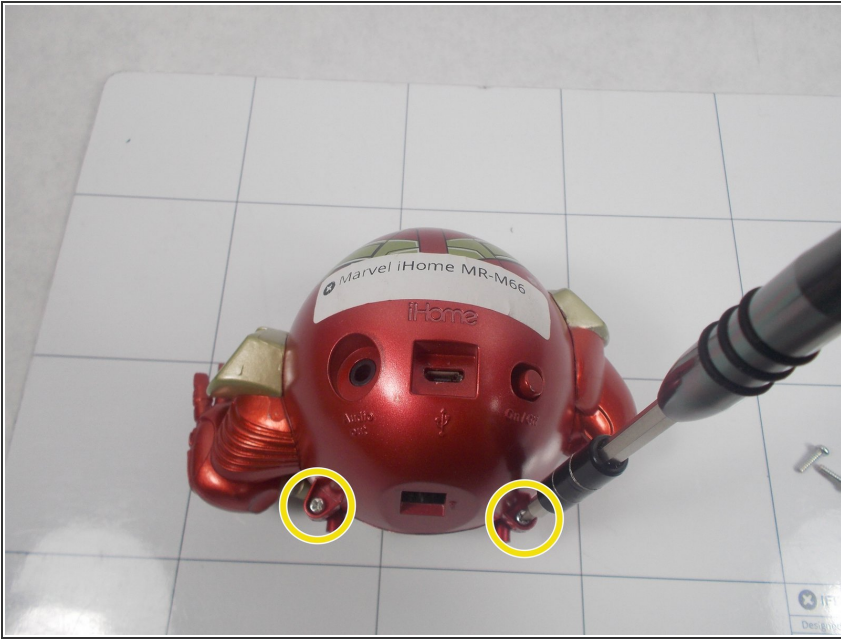
- Remove the two screws as shown.

### Step 4



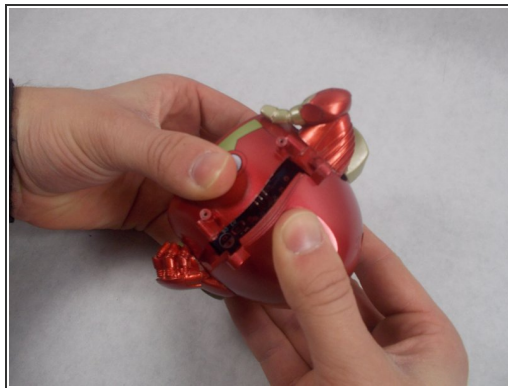
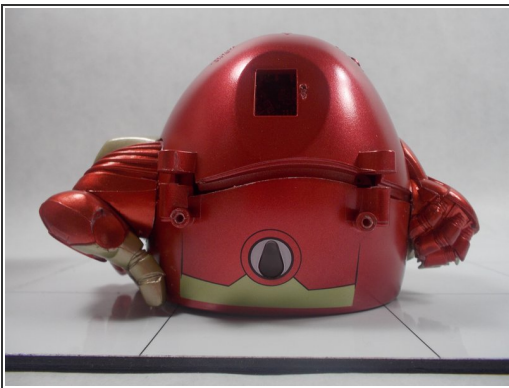
- Use a spudger to release the small retaining clip that holds the feet to the bottom of the device.  
⚠ Try to be careful here, as too much force can break the clip.

## Step 5



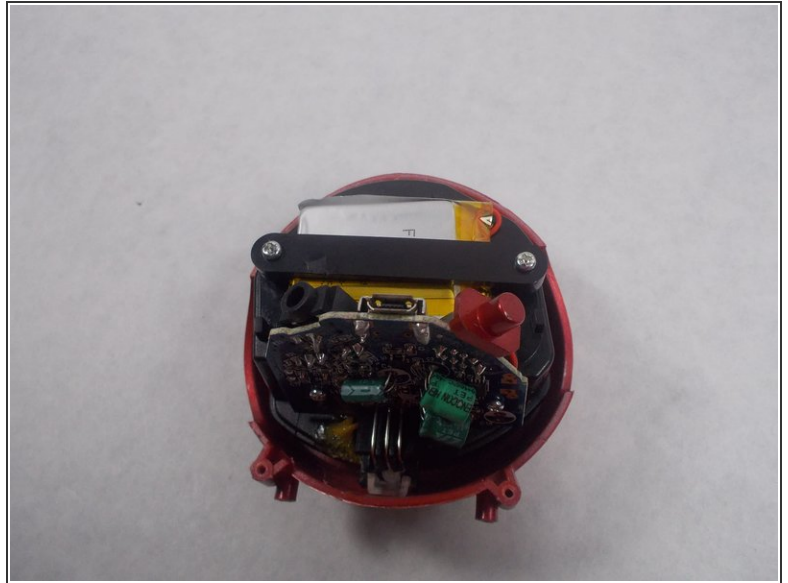
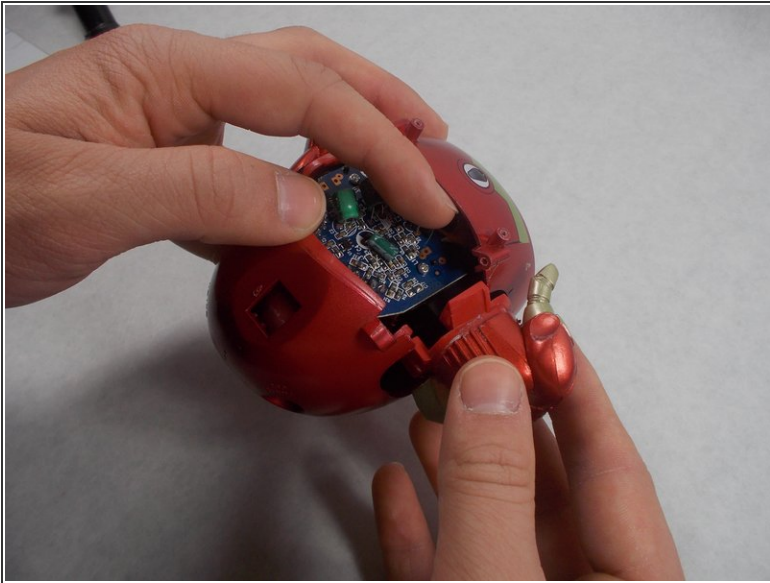
- With the feet now off, remove the two screws shown from the back of the device.

## Step 6



- Using a plastic opening tool, separate the front and back cover from each other.
  - ⓘ This step requires the most time and patience, so be careful.
- Starting from the bottom, use the plastic opening tool to create the initial separation and continue along the seam to the top of the device.
  - Alternate between using the plastic opening tool and your hand to create the separation.
  - ⓘ The power switch will most likely come loose during this step and you will hear something rattling inside the device.

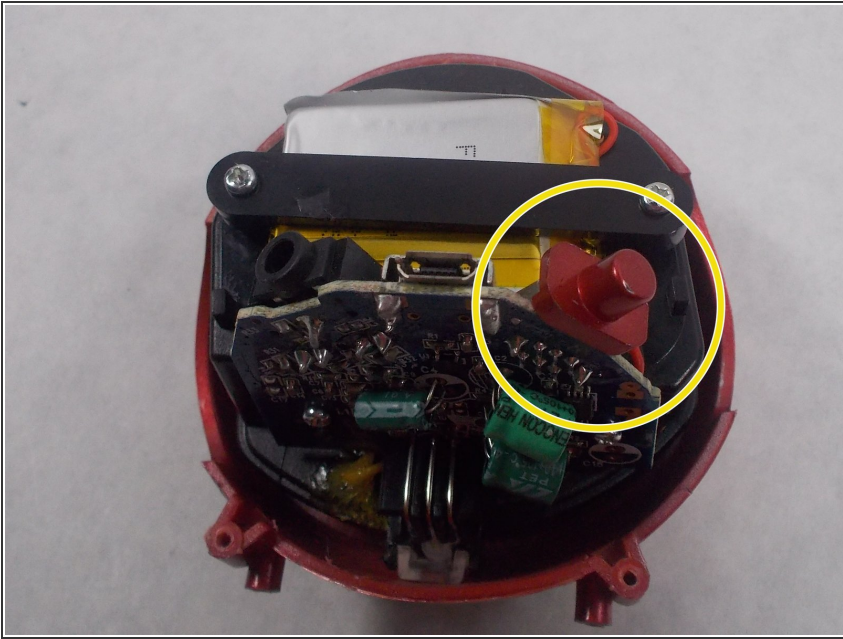
## Step 7



- Once a significant separation has been created, remove the two arms from either side of the device.
  - ⓘ They are not fixed to the body itself so you should be able to wiggle them free.
- Once the arms are out, continue pulling the back cover off the device.
- Remove the power switch cover.

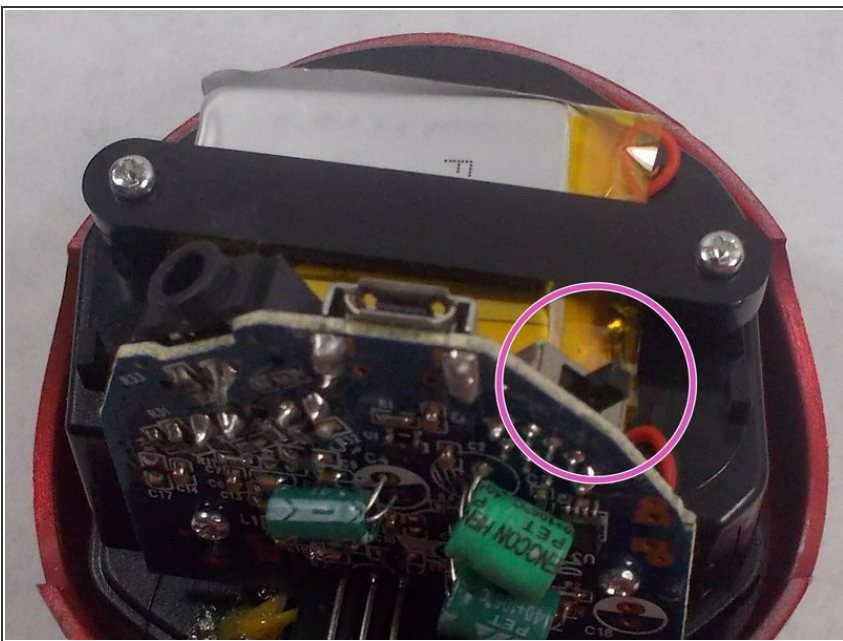


## Step 8 — Speaker Assembly



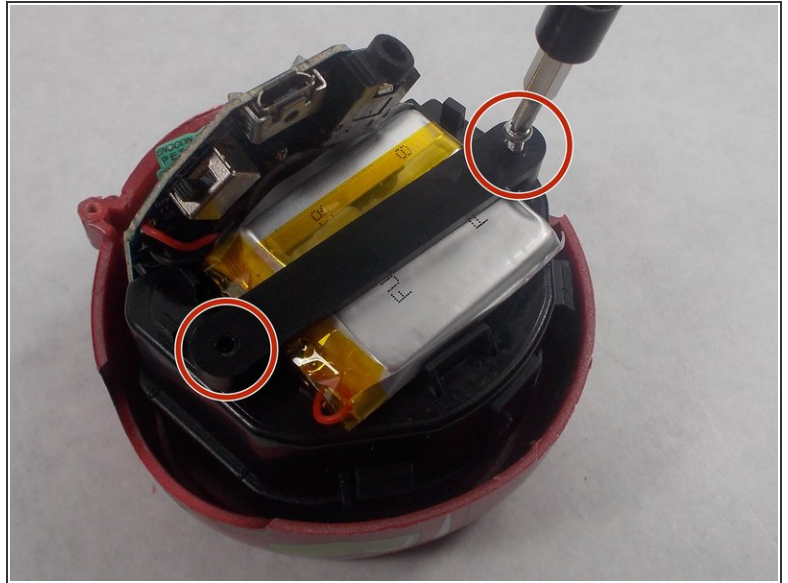
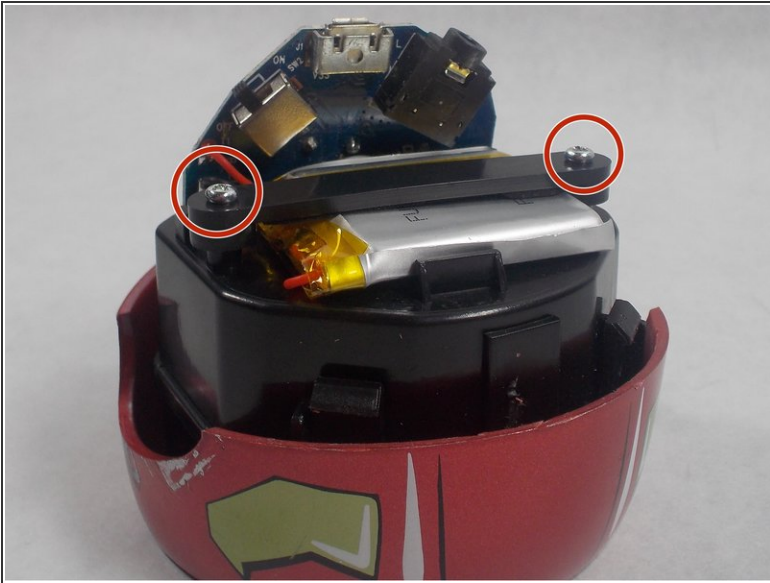
- Remove the red cover for the on/of switch from the device. Set it aside with the back plate and legs of the device.

## Step 9



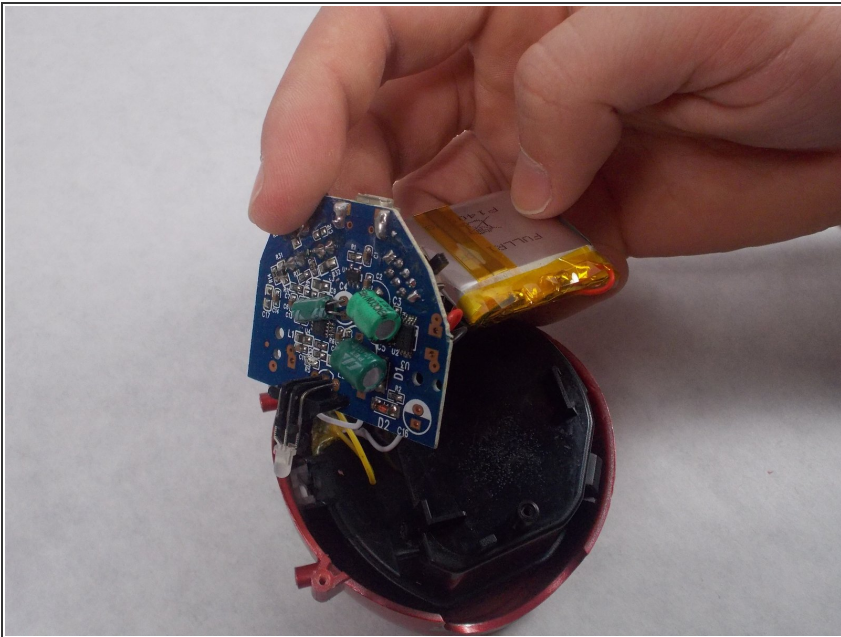
- Before taking anything else out or apart, make sure the device is turned off.
- ⓘ You can tell when it is turned off when the power switch is in the same position as shown in the picture.

## Step 10



- Loosen and remove the two screws keeping the battery cover (the black plastic strip that keeps the battery in place) using the Philips head screw driver.

## Step 11



- Remove the battery cover. Set it aside with the on/off button cover, backplate, and other plastic pieces taken from the device.
- The battery should become loose as shown in the picture

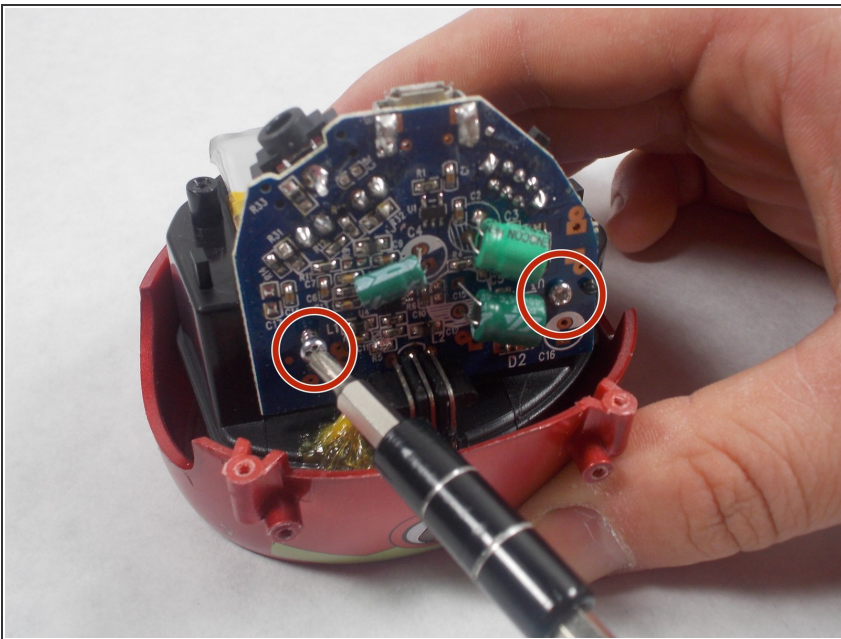


## Step 12

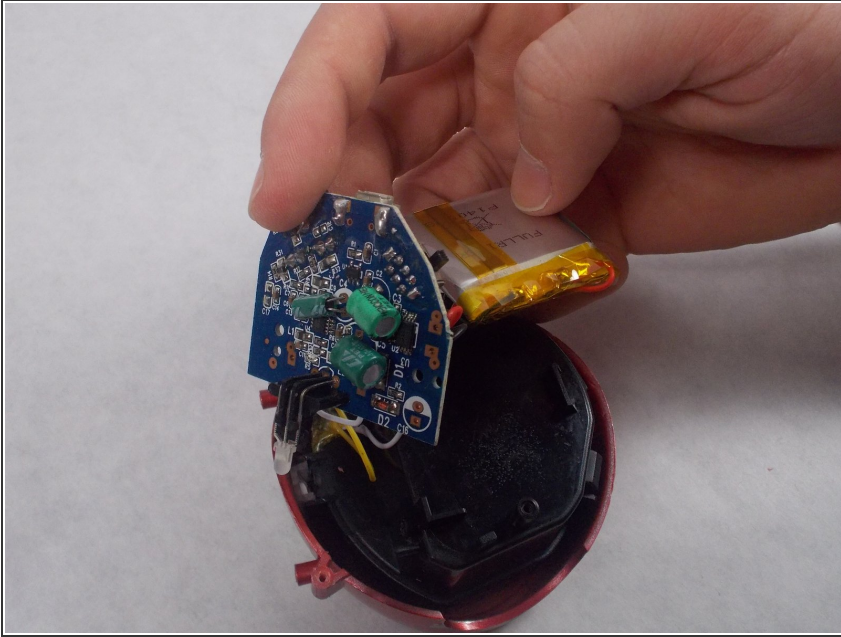


- Gently lift the battery from the rest of the front assembly to stretch the wires out slightly. Gently let the battery hang from the side of the device.

## Step 13

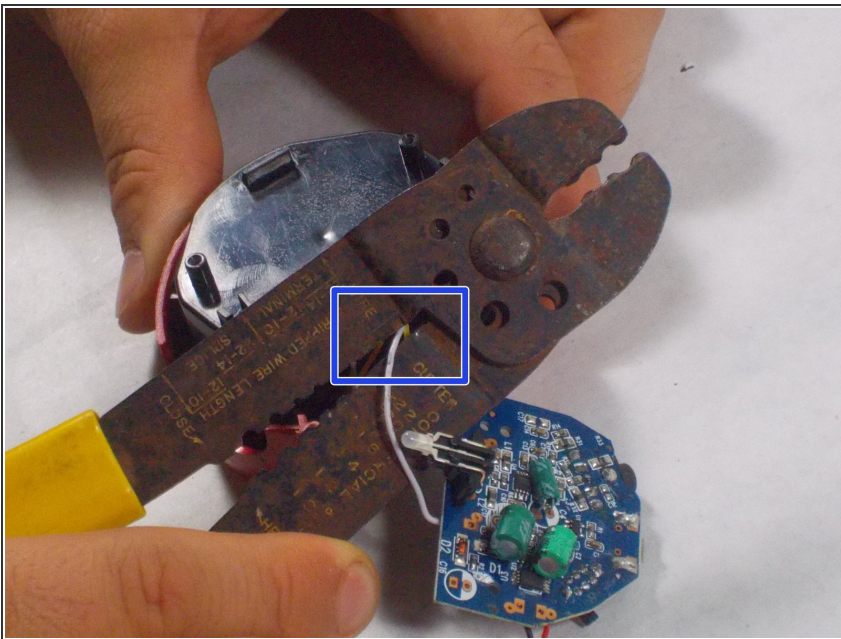


## Step 14



- Gently lift the motherboard from the rest of the front assembly to stretch the wires out slightly.
- ⚠ The LED light is attached to the also motherboard, so when taking out the motherboard, gently press the top of it away from the assembly while pulling upwards on the motherboard, allowing the light to lift out of its small protective area while the motherboard is being taken out

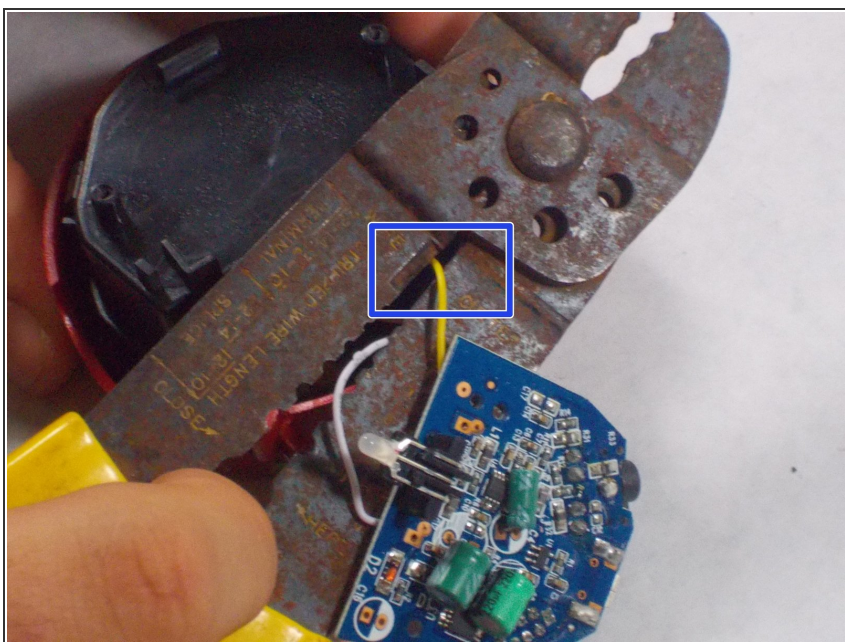
## Step 15



- Take the wire cutters and place the two cutting edges against one of the wires connecting the motherboard to the speaker assembly. Place the wire cutter about an inch away from where it connects to the front assembly and gently squeeze the grips of the wire cutter together until the wire is severed.

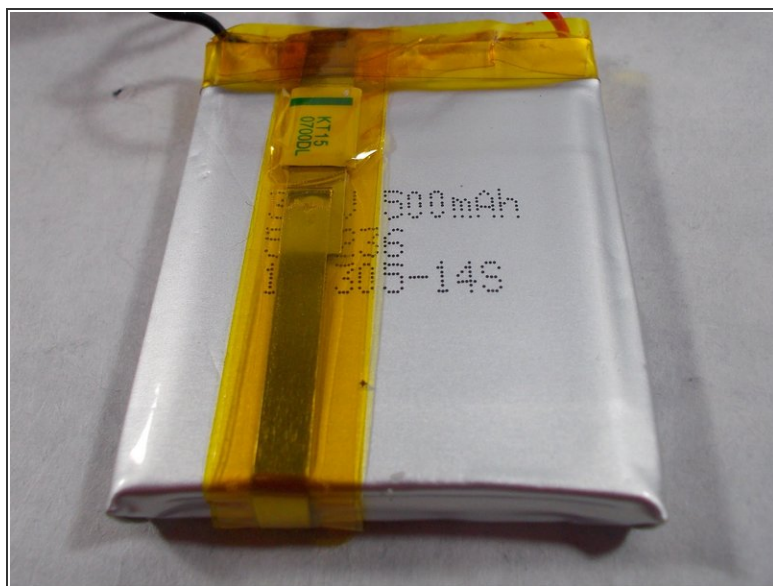
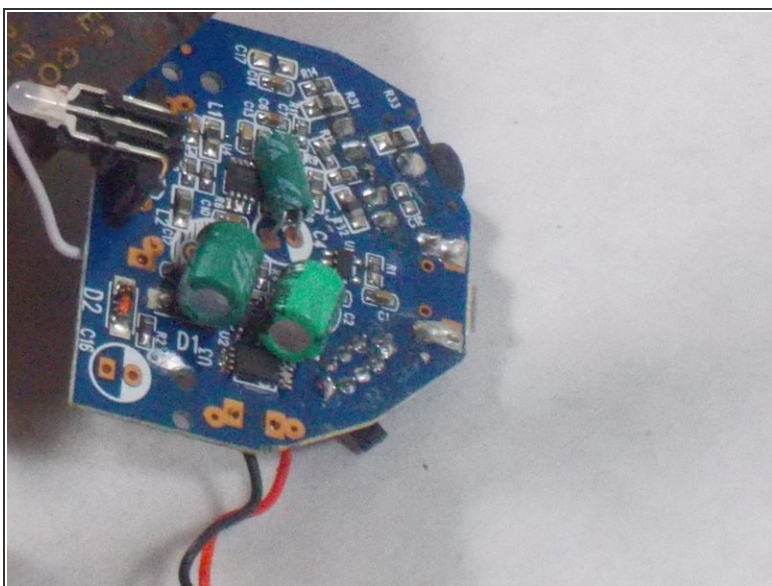


## Step 16



- Repeat the previous step with the second wire connecting the speaker assembly with the motherboard.

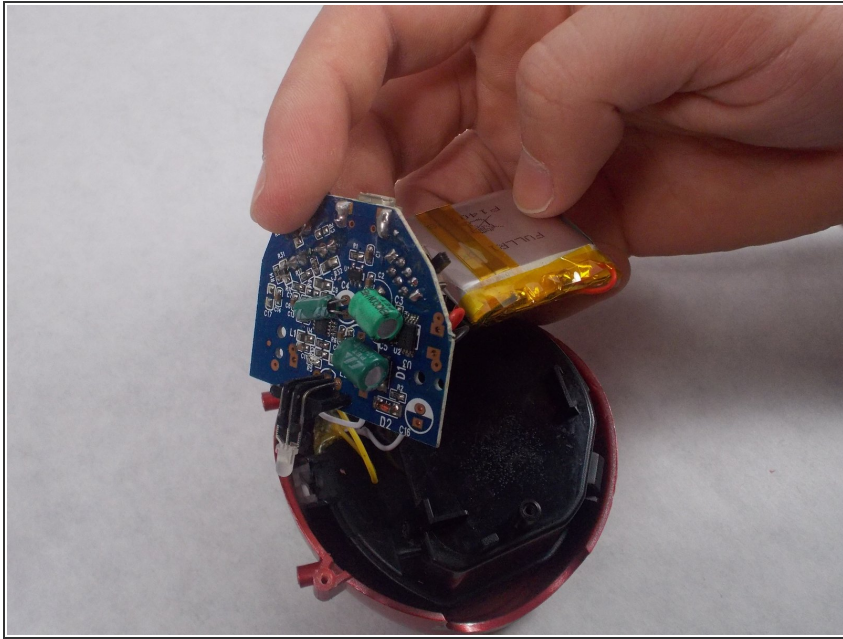
## Step 17



- With the motherboard detached from the speaker assembly, take out the mother board and battery and set them aside.

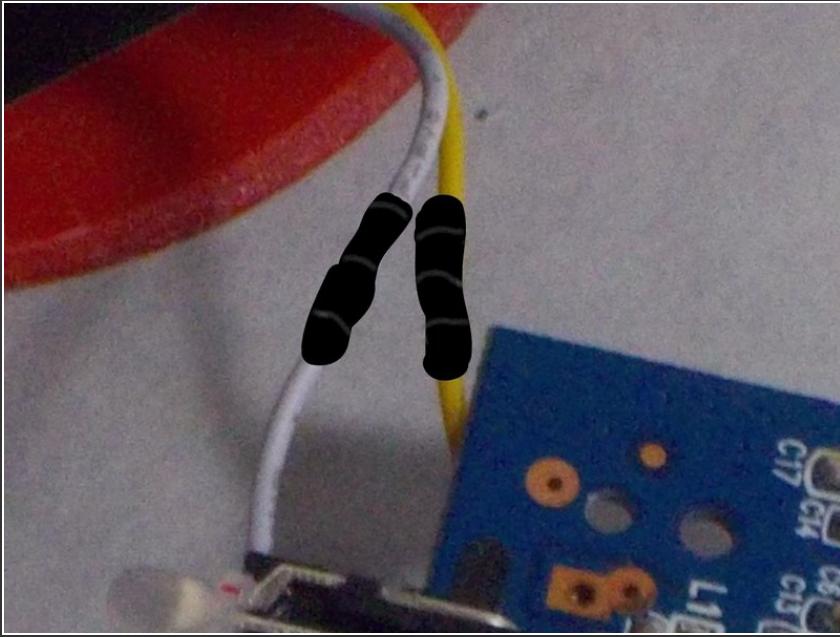


## Step 18



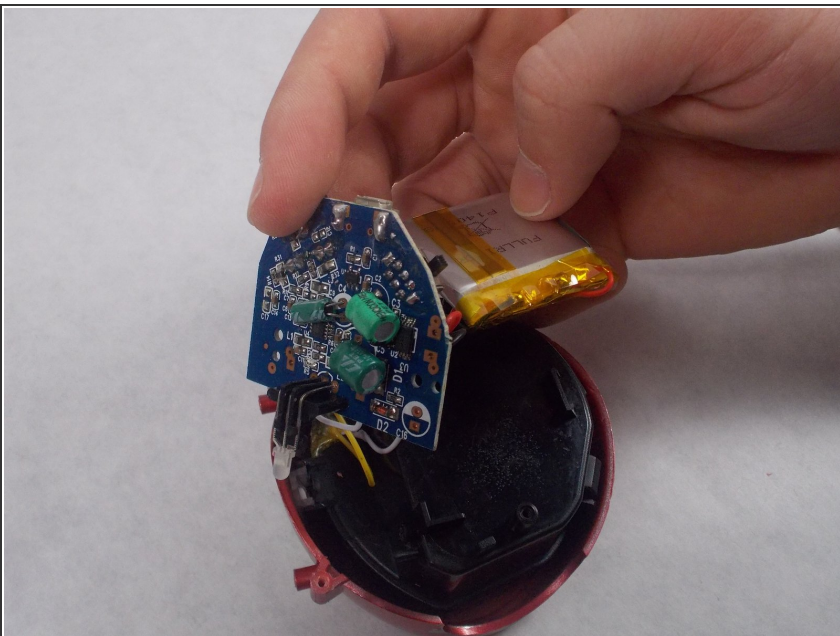
- Set aside the old speaker assembly and put the new speaker assembly in the spot where the old speaker assembly was.

## Step 19



- Twist the wire sticking out from the assembly with that of the motherboard so that they loop around each other. Add electrical tape around the wire connection.
- Repeat with the second wire.

## Step 20



- Place the motherboard on the new speaker assembly as shown in the picture.
- ⚠ Put the LED light into the slot on the bottom of the speaker assembly first, then push the motherboard against the speaker assembly GENTLY so that the plastic tips jutting out from the speaker assembly go through two of the holes in the motherboard and keep it in place.
- Replace the screw keeping the motherboard in place.

## Step 21



- Place the battery on the speaker assembly, letting the battery fall into the slot between the plastic pieces coming up from the top of the speaker assembly.
- Replace the screws on the battery cover to secure the battery onto the new speaker assembly.

To reassemble your device, follow these instructions in reverse order.