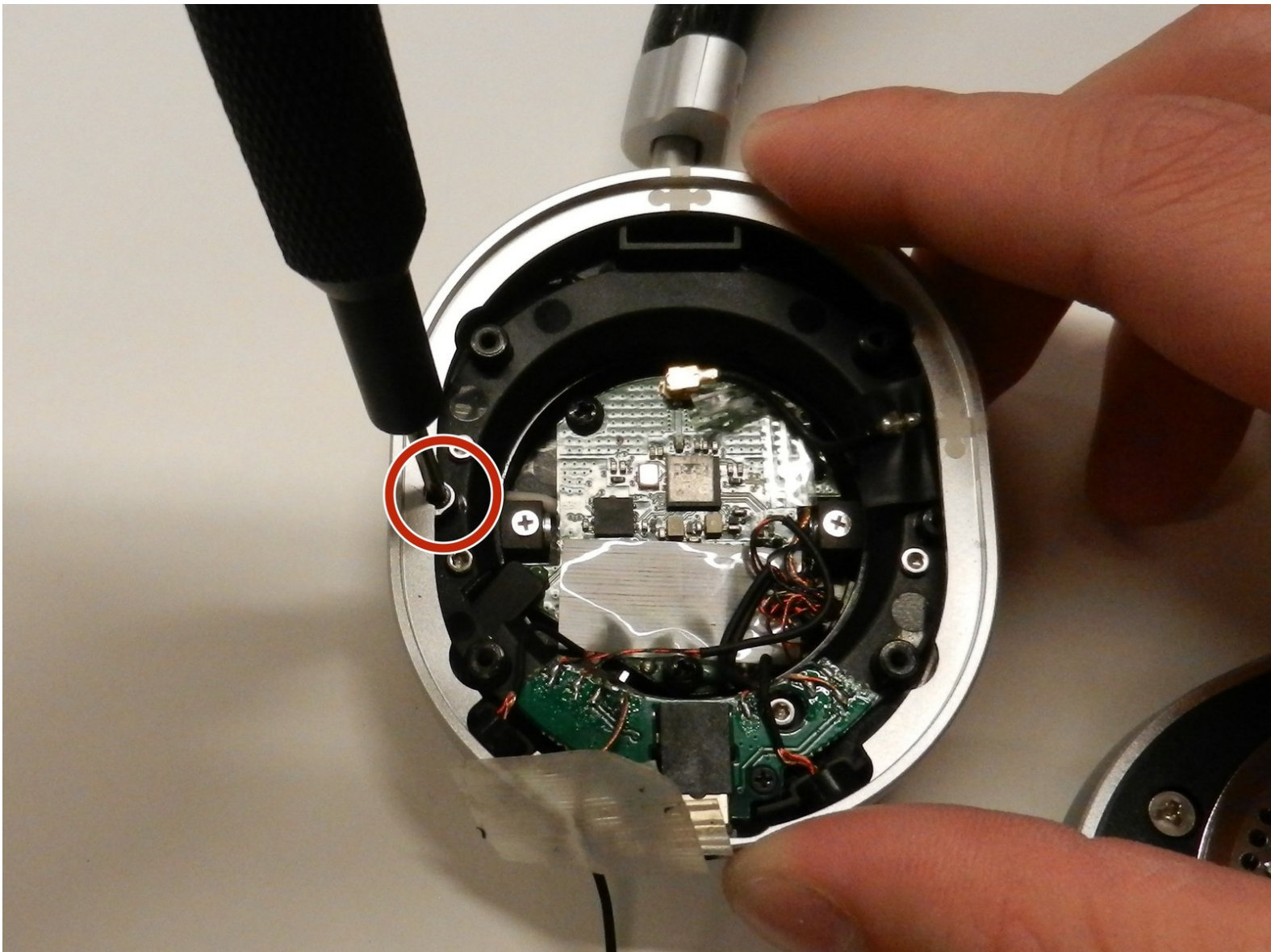




# Master and Dynamic MW50 Motherboard Replacement

This is a guide on how to replace the motherboard within the Master and Dynamic MW50 wireless headphones.

Written By: Ryan Chan



This document was generated on 2019-09-20 09:10:23 AM (MST).

## INTRODUCTION

You will want to disassemble the Left side of the headphones. This guide requires soldering, If you don't know how to solder, click [here](#) for a great guide.

---

### TOOLS:

- [Desoldering Braid](#) (1)
  - [Soldering Iron](#) (1)
  - [Staples](#) (1)
  - [Y1 Tri-point Screwdriver](#) (1)
  - [Jimmy](#) (1)
  - [Solder](#) (1)
  - [Tweezers](#) (1)
  - [JIS #00 Screwdriver](#) (1)
  - [T4 Torx Screwdriver](#) (1)
-

## Step 1 — Master and Dynamic MW50 Disassembly



- Pull the cushion off of the desired side by gripping the top of the headphones and pulling the cushion off.

## Step 2



- Remove the four 5mm screws from the earpiece with a Y1 Triwing screwdriver.

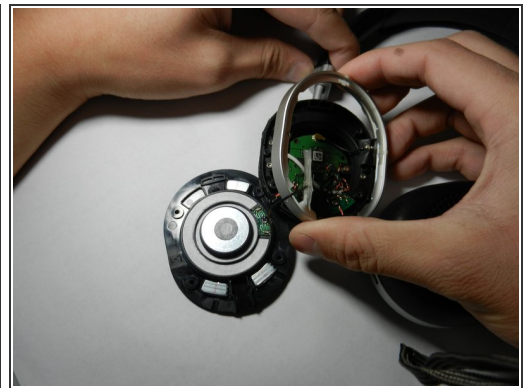
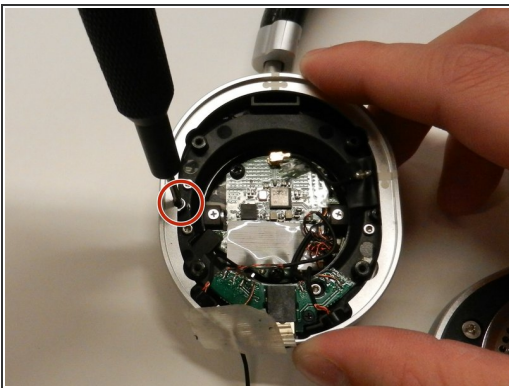


### Step 3



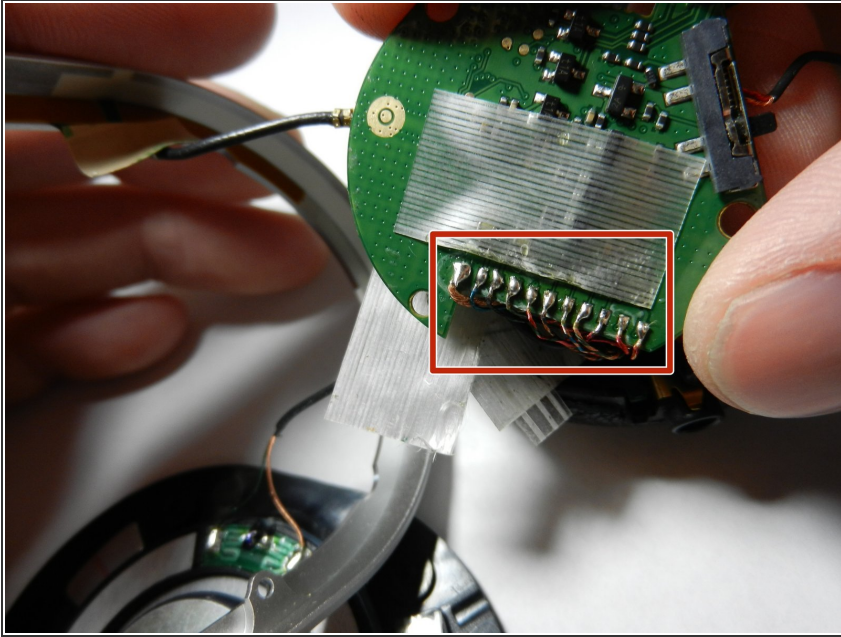
- Use the Jimmy to lift up the black cover to get inside the device.

### Step 4 — Motherboard



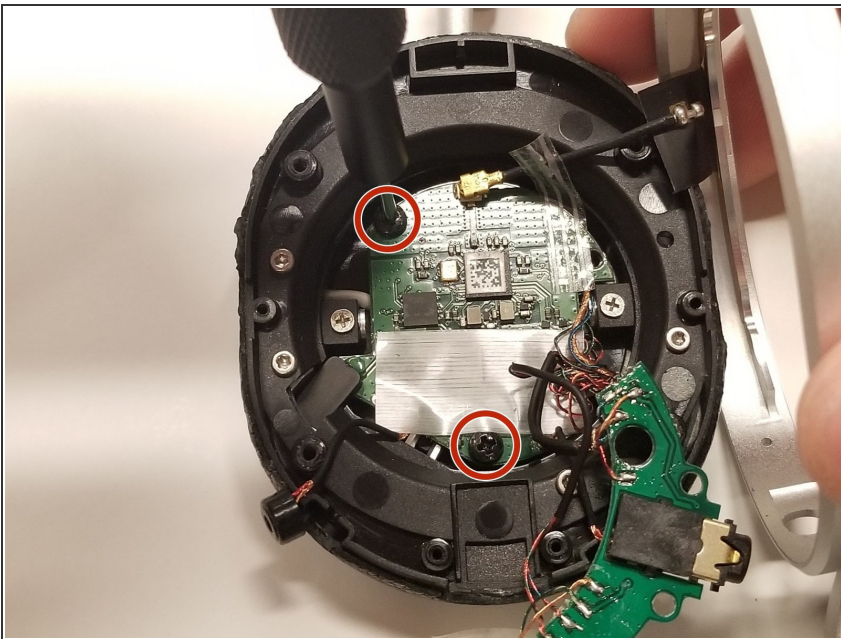
- Remove the 2mm screw holding the side cover plate in place with a JIS #00 screwdriver.
- Move the side cover off to the side.
- ⓘ The black cable connected to the motherboard from the side cover can be gently pulled off from the motherboard side. It isn't soldered on.

## Step 5



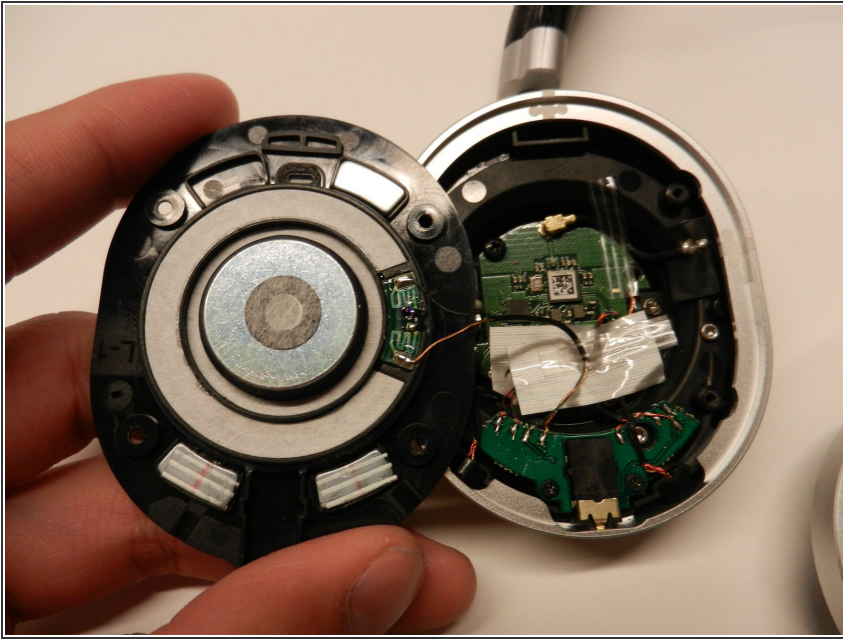
- Desolder all the wires connected to the motherboard.
- ☑ Refer to this picture for soldering the wires on the new motherboard.

## Step 6



- Remove the two 2mm screws holding the motherboard in place.

## Step 7



- Replace with new motherboard.

To reassemble your device, follow these instructions in reverse order. You may want to use the picture from Step 5 to correctly re-solder your device.