



Master and Dynamic MW50 Right/Left Speaker Replacement

This guide will allow you to replace your Master and Dynamic MW50 speaker if it is not functioning properly.

Written By: Katie Dunnigan



INTRODUCTION

If your speaker is not producing sound correctly, it may be necessary to replace the speaker component. This guide will show the five steps for removing the speaker. Soldering is required for this replacement, If you don't know how to solder or desolder, click [here](#) for a great guide.



TOOLS:

- [Jimmy](#) (1)
 - [Y1 Tri-point Screwdriver](#) (1)
 - [Solder](#) (1)
 - [Soldering Tweezers](#) (1)
 - [Portable Soldering Iron](#) (1)
 - [Glue Gun](#) (1)
-

Step 1 — Master and Dynamic MW50 Disassembly



- Pull the cushion off of the desired side by gripping the top of the headphones and pulling the cushion off.

Step 2



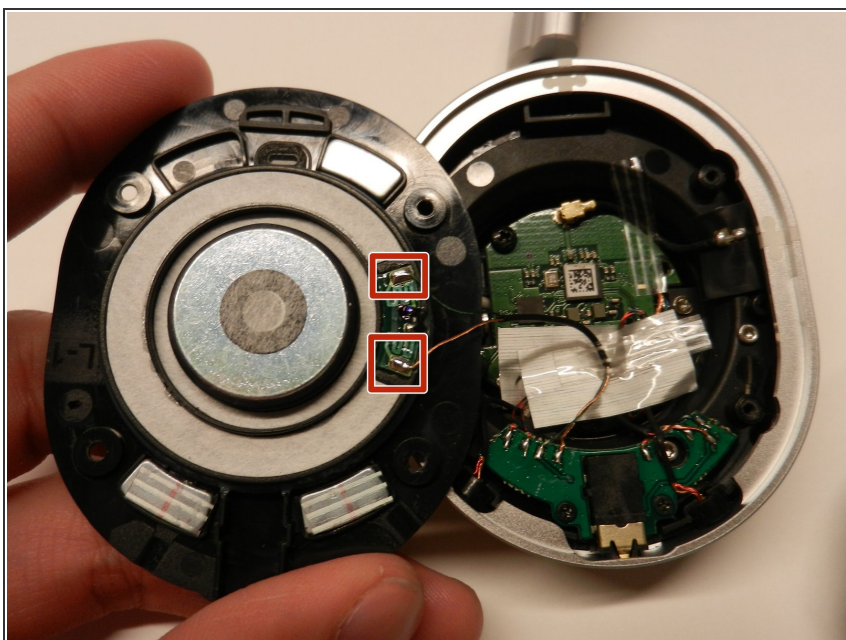
- Remove the four 5mm screws from the earpiece with a Y1 Triwing screwdriver.

Step 3



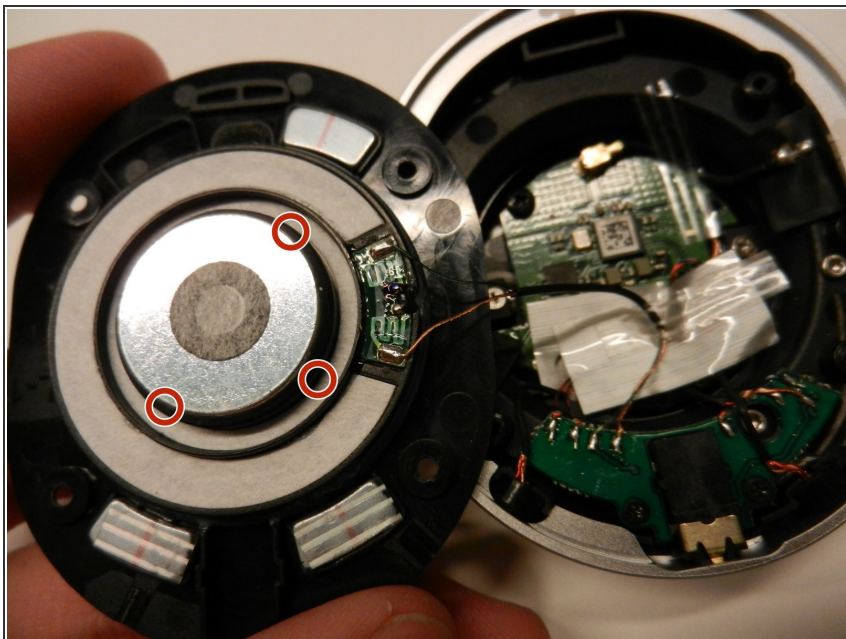
- Use the Jimmy to lift up the black cover to get inside the device.

Step 4 — Right/Left Speaker



- Desolder the two wires connected to the speaker.

Step 5



- Use a heating gun to remove the glue from the speaker.
- Once the glue is removed, gently pull out the speaker.

To reassemble your device, follow these instructions in reverse order.