



# Mattel Loopz Speaker Replacement

This guide will show you how to replace a faulty speaker in the Mattel Loopz game.

Written By: Trevor Lasiter



# INTRODUCTION

This guide will show you how to properly replace the speaker for the the Mattel Loopz interactive game.



## TOOLS:

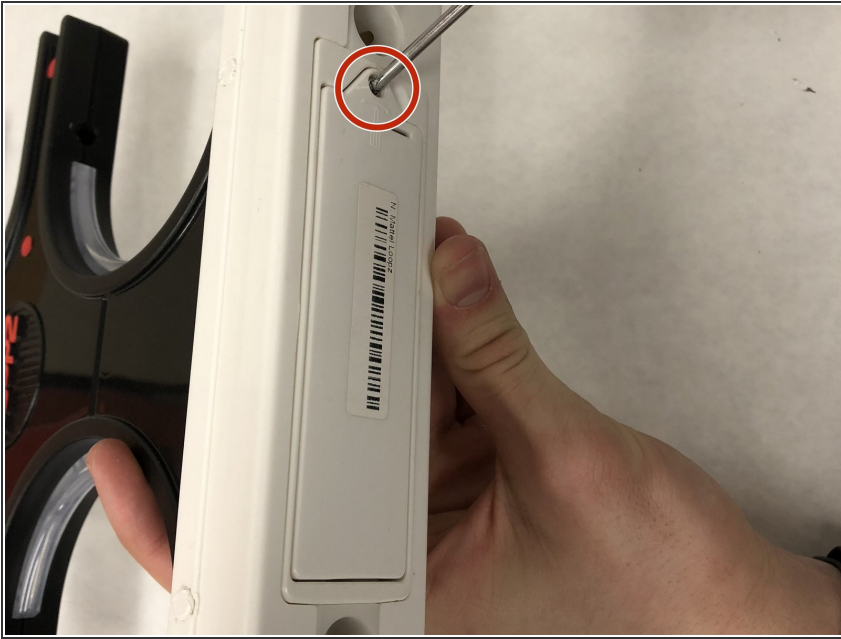
- [Phillips #2 Screwdriver](#) (1)
- [Phillips #1 Screwdriver](#) (1)
- [Soldering Iron](#) (1)
- [Spudger](#) (1)



## PARTS:

- [AA Batteries](#) (4)
- [Speaker](#) (1)

## Step 1 — Batteries



- Use a No. 2 Phillips head screwdriver to take out the 1/4" screw that holds the battery cover in place on the bottom of the device.

## Step 2



- Take out the 4 AA Batteries.

### Step 3 — Speaker



- Remove red screw covers (13 total) using spudger.

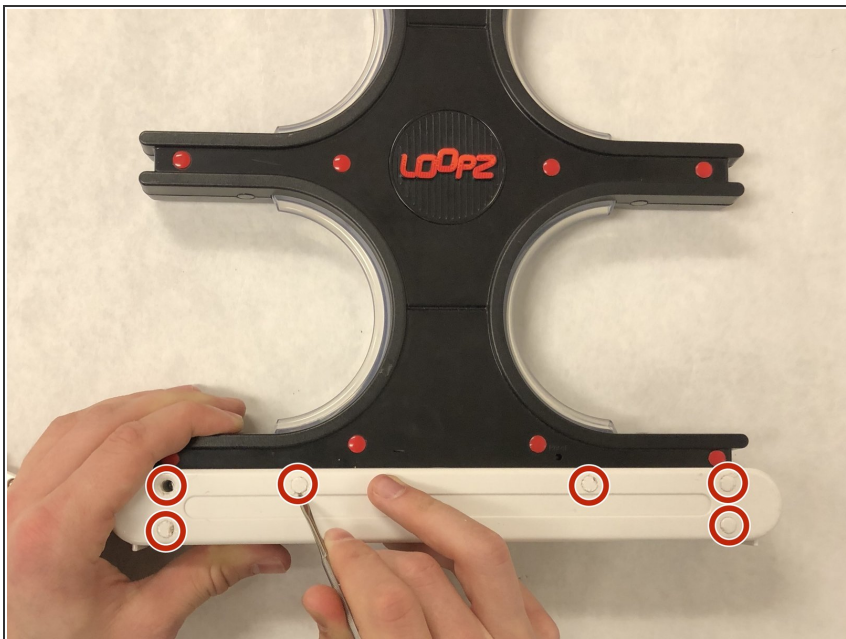
### Step 4



- Remove the thirteen 12.7mm screws with a #1 Phillips screwdriver.



## Step 5



- Remove 6 white caps using spudger to reveal screws underneath.

## Step 6



- Remove the six 16mm screws with a #1 Phillips screwdriver.

## Step 7



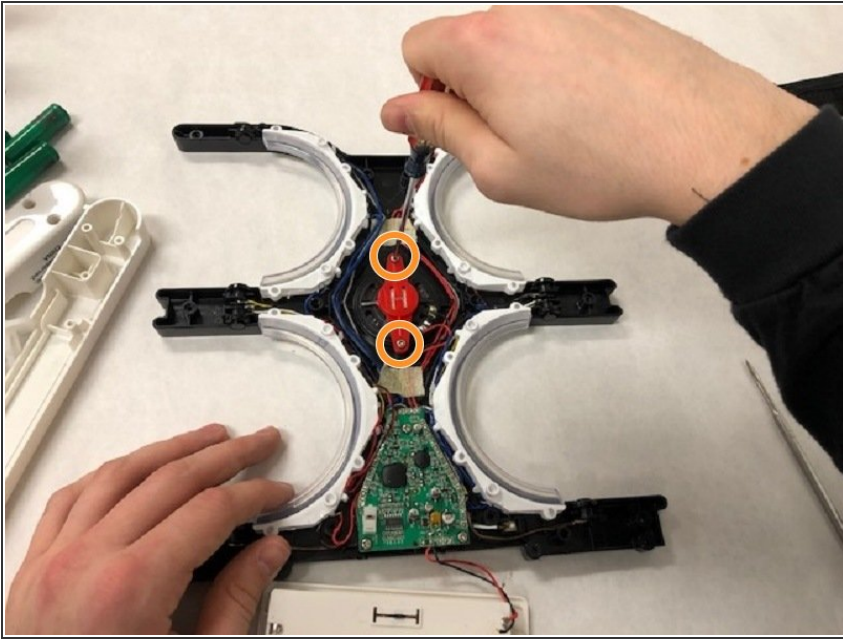
- Remove the white cover. Be sure to remove the front and the back.

## Step 8



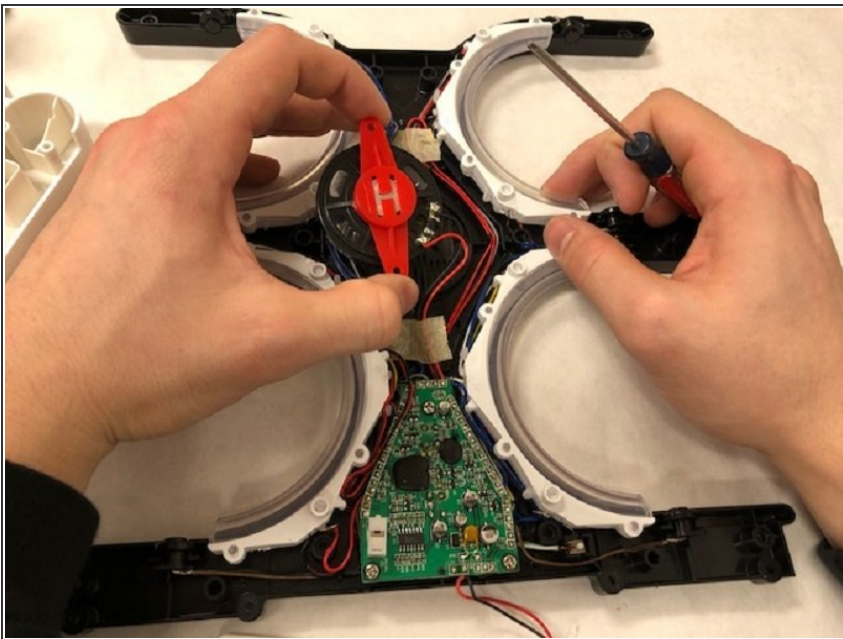
- Remove the black, plastic cover to reveal the internal electronics as shown.

## Step 9



- Remove the two 6.4mm screws with a #1 Phillips screwdriver.

## Step 10



- Remove the speaker as shown.



## Step 11



- Use a soldering iron to [desolder](#) the red and black speaker wires from the speaker.

To reassemble your device, follow these instructions in reverse order.