



MaxWest TAB-7360DC Screen Replacement

This guide will give the user insight on how to replace the screen on the Maxwest Tab.

Written By: Sam Cook





TOOLS:

- [iFixit Opening Tools](#) (1)
- [Soldering Iron](#) (1)
- [grounding strap](#) (1)

Step 1 — Back Hard Case



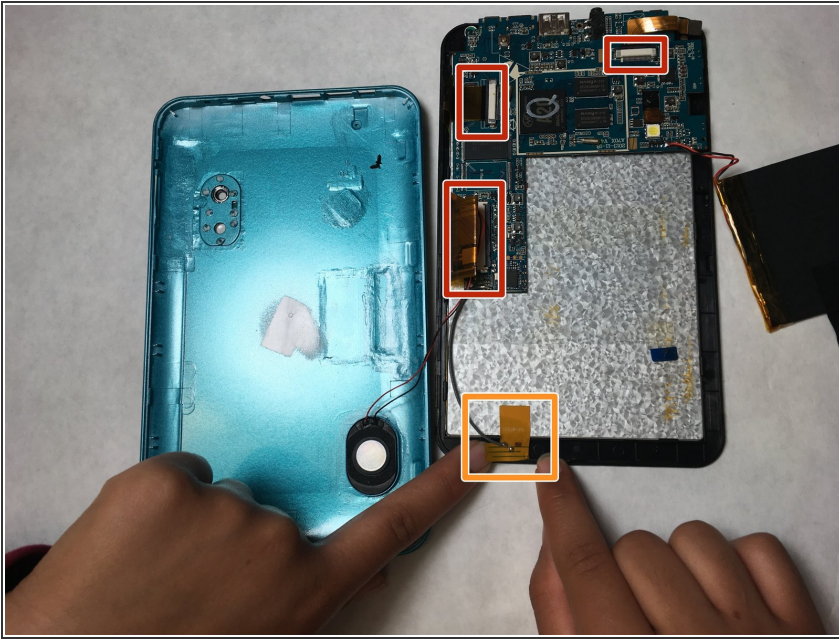
- Insert plastic opening tool at the corner of the screen, in between the back case and the front.
- Volume buttons will fall out during removal.
- When opening up the case, have the I/O ports facing you and turn the back case towards the right. There is a short wire connecting the speaker to the logic board.

Step 2



- Carefully pry the tape from the battery, the bottom left chip, and the ribbon cable towards the bottom-right of the board. The bottom left has a little silver square component that must also be unclipped and untaped.
- The battery is glued to the back of the screen; therefore pull the battery off of the back with caution. There will be resistance but that's okay.

Step 3



- Gently unclip the data cable retainers and remove the wires from the junctions.
- Peel the tape off the wire near the bottom of the case.

Step 4



- Remove the two 4mm screws (circled in orange) with a 00 Phillips head driver.
- Unclip the black plastic retainer near the data port. The PCB should now be able to be gently pulled off.

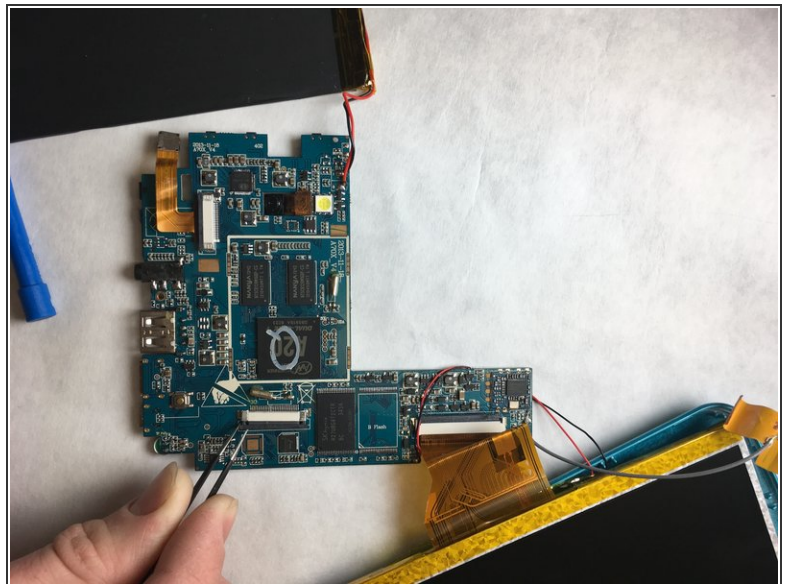
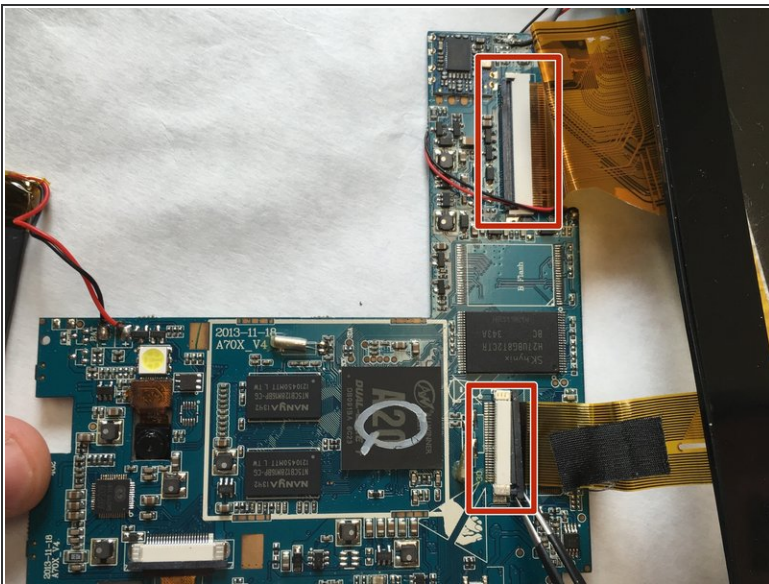
Step 5



- Make contact with the battery terminals with the hot tip of the soldering iron for a few seconds while slowly pulling the wire away.

⚠ DO NOT TOUCH BOTH THE BLACK AND RED LEADS AT THE SAME TIME WITH THE SOLDERING IRON

Step 6 — Motherboard



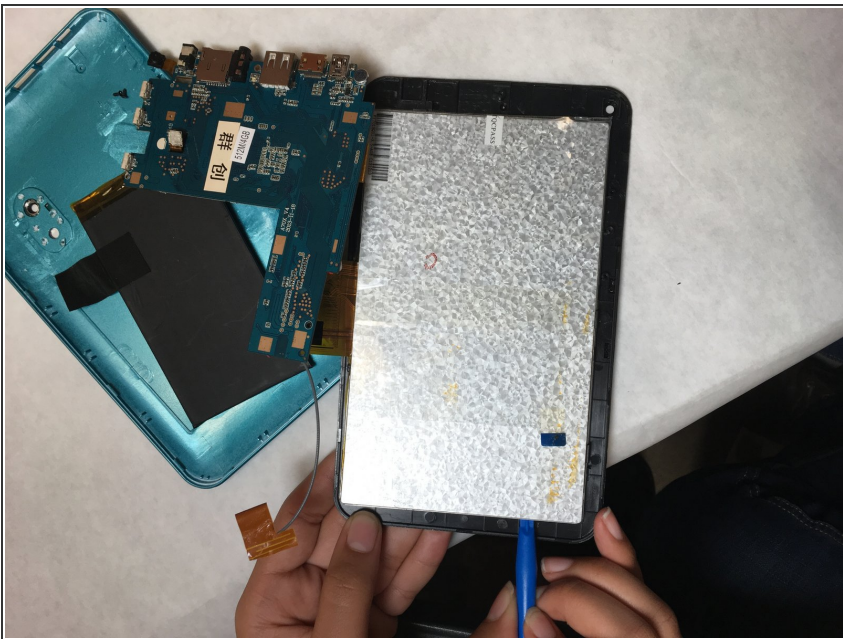
- With the tweezers, grab onto the gray part of the ribbon clamps and pull away from the ribbons.
- Once the ribbons are unclamped, they are able to slide out.

Step 7 — Screen



- Pick up the motherboard and carefully place adjacent to the battery.

Step 8



- Use plastic prying tool to lift the metallic surface upward. (It doesn't matter where)
- Make sure to work the prying tool around the entire screen edge. Lift screen when completely loose.

Step 9



- Remove screen and place to the side.

To reassemble your device, follow these instructions in reverse order.