



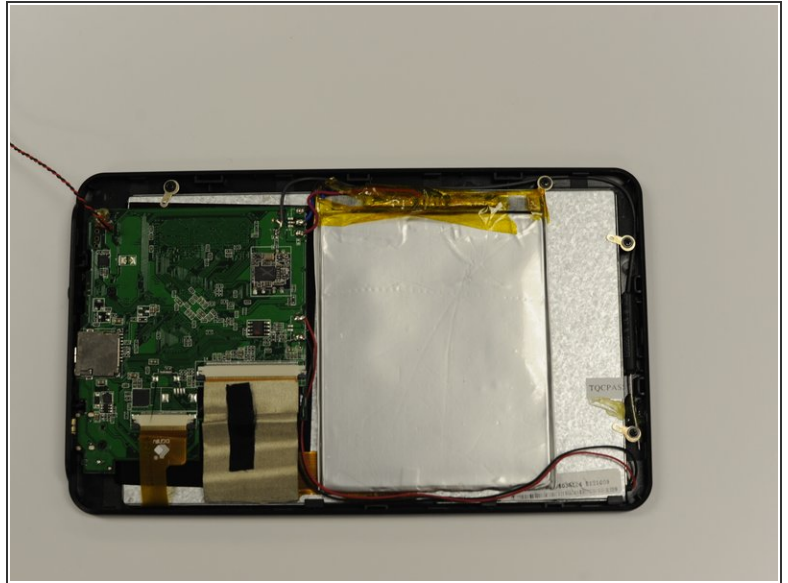
Maylong M-270 Battery Replacement

To show a user how to remove the battery from the device.

Written By: Adam Sanders

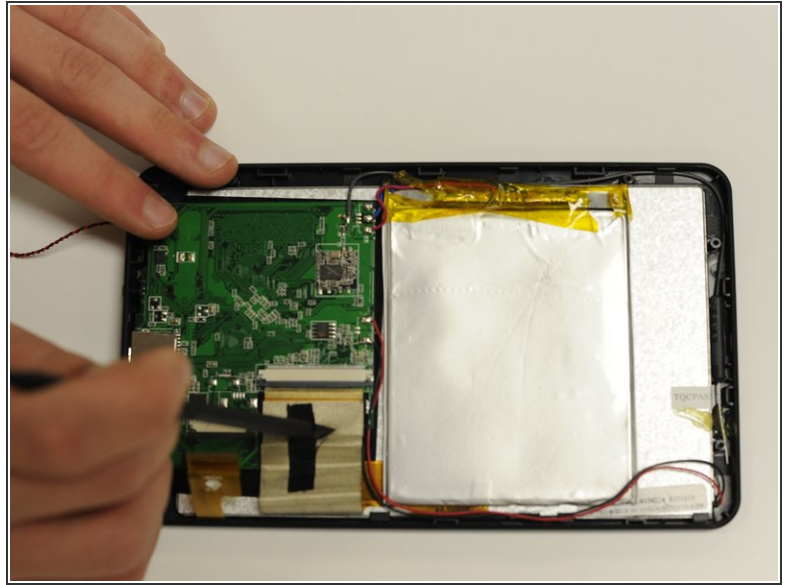
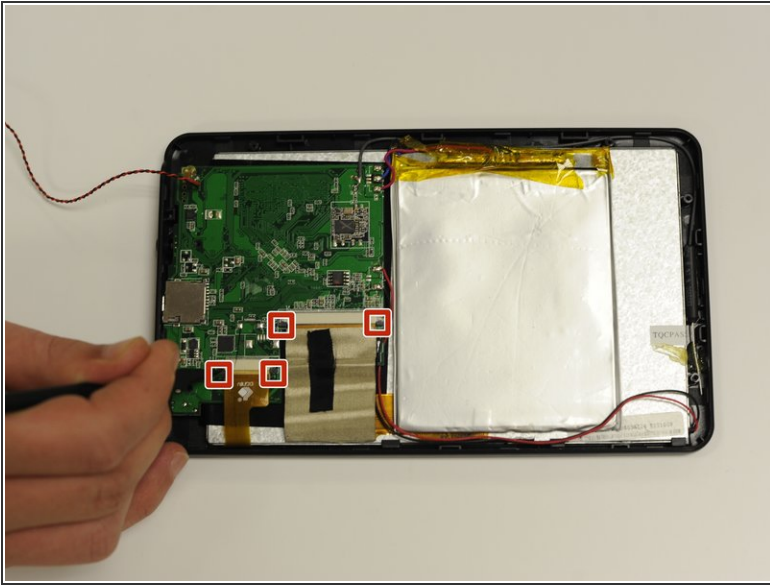


Step 1 — Motherboard



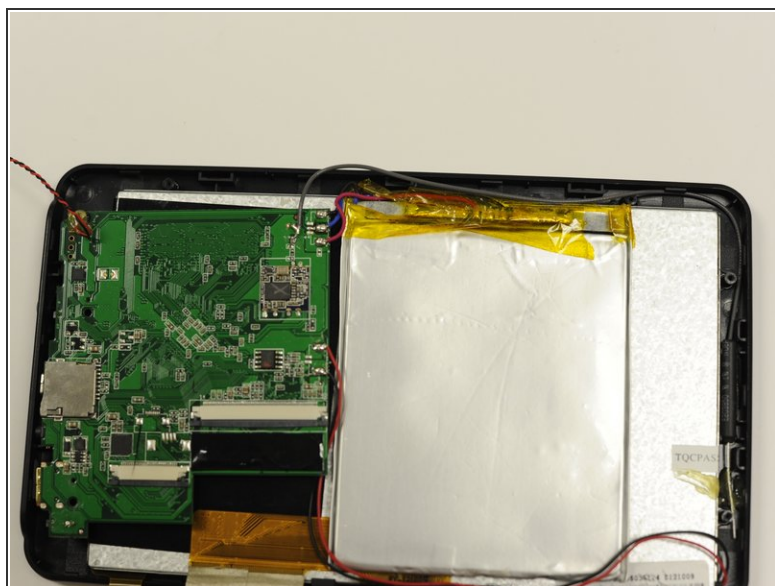
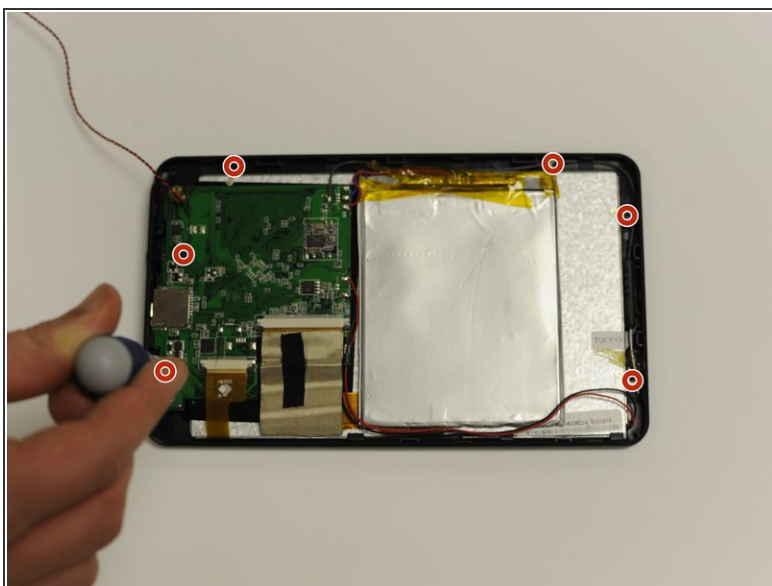
- Use the plastic opening tool to separate the back cover plate from the front.
- Insert the plastic opening tool in between the back plate cover and the top cover, then slide along edges to pry open.

Step 2



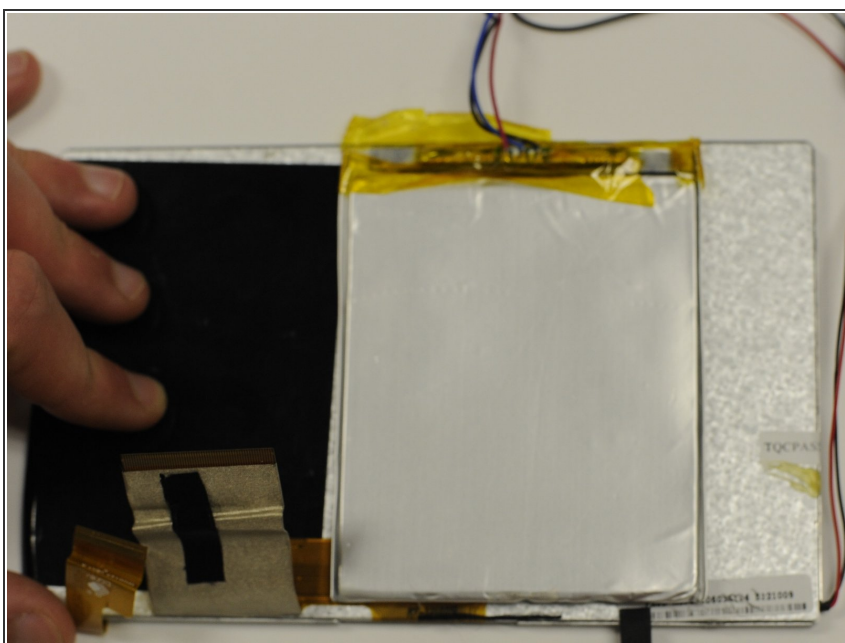
- Locate the two ribbons attached to the device's motherboard.
- Flip the small black plastic catches down by using the small end of the spudger.
- Remove the ribbons by gently pulling them away from the motherboard.

Step 3



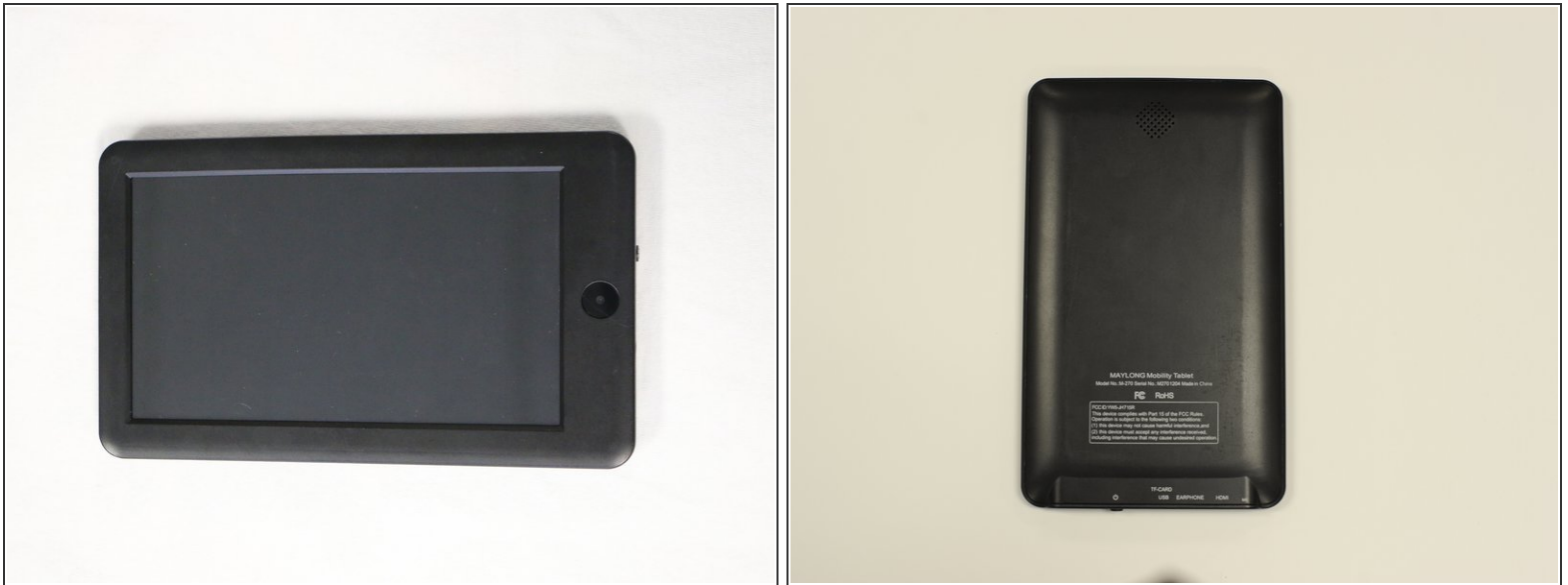
- Remove the two screws from the motherboard.
- Remove the four screws and metal holds from the edge of the device.

Step 4



- Remove the motherboard by gently pulling it away from the bottom of the device.

Step 5 — Battery



- Use this [MAYLONG Mobility M-270 Teardown Guide](#) to disassemble the device.

Step 6



- Remove the battery by using the spudger to gently pry the battery away from metal case around the front screen.

To reassemble your device, follow these instructions in reverse order.