



Maze Speed SSB-508 Battery Port Replacement

This guide shows the process of disassembling the Maze Speed SSB-508 battery port from the motherboard.

Written By: Jun Soo Kim



INTRODUCTION

This guide will provide you the process of replacing the battery port in a Maze Speed phone. You will need a plastic opening tool, tweezers, a Phillips #00 Screwdriver, pliers and soldering equipment. You will also need to know how to solder, in order to not damage other components. Sometimes a phone battery connector may get corroded which shortens the battery life. If this is the case, you will need to change the battery port.



TOOLS:

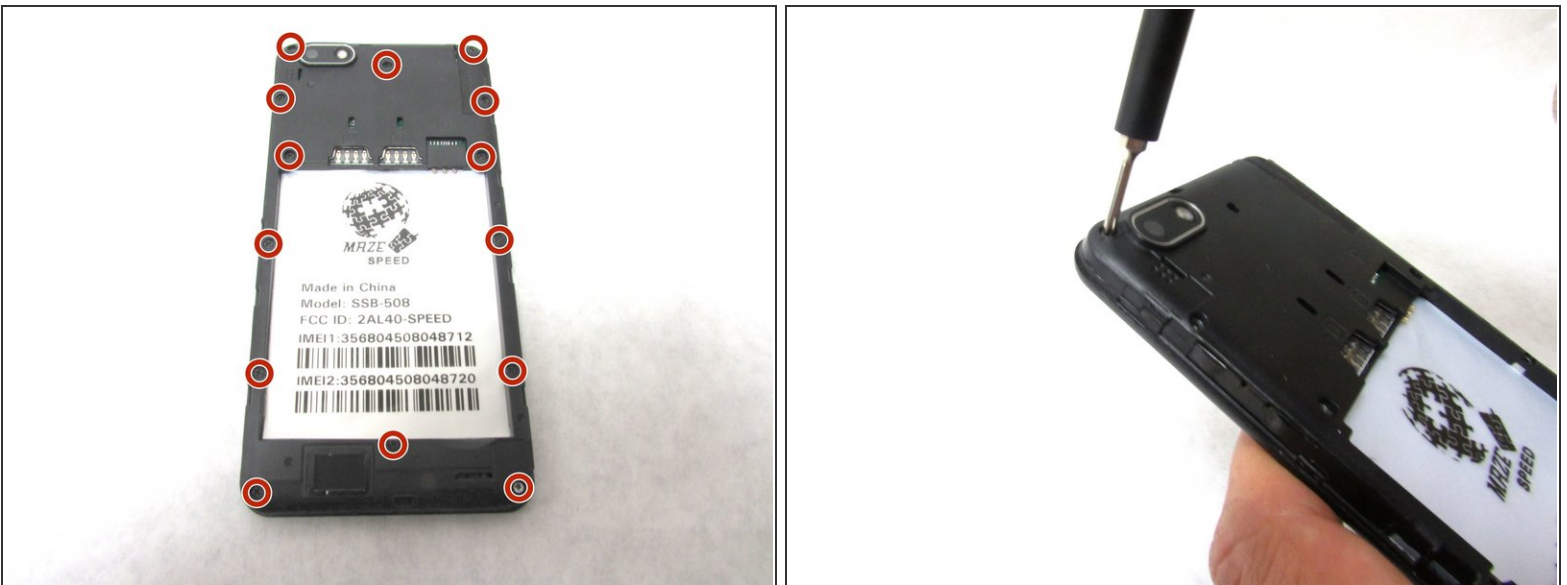
- [iFixit Opening Tools](#) (1)
 - [Phillips #00 Screwdriver](#) (1)
 - [Soldering Iron](#) (1)
 - [Tweezers](#) (1)
-

Step 1 — Motherboard



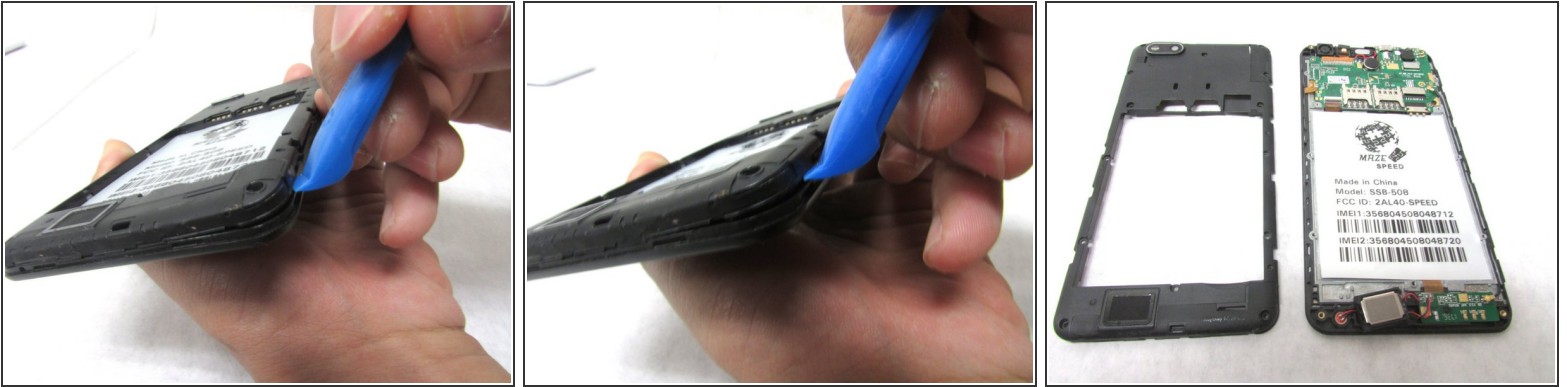
- Remove the back cover by inserting the plastic opening tool at the bottom left corner of the device.

Step 2



- Remove fifteen 2mm Phillips #00 screws.

Step 3



- Lift the plastic opening tool up at the bottom left corner to create the gap.
- Repeat this through all corners to remove the internal casing.

Step 4



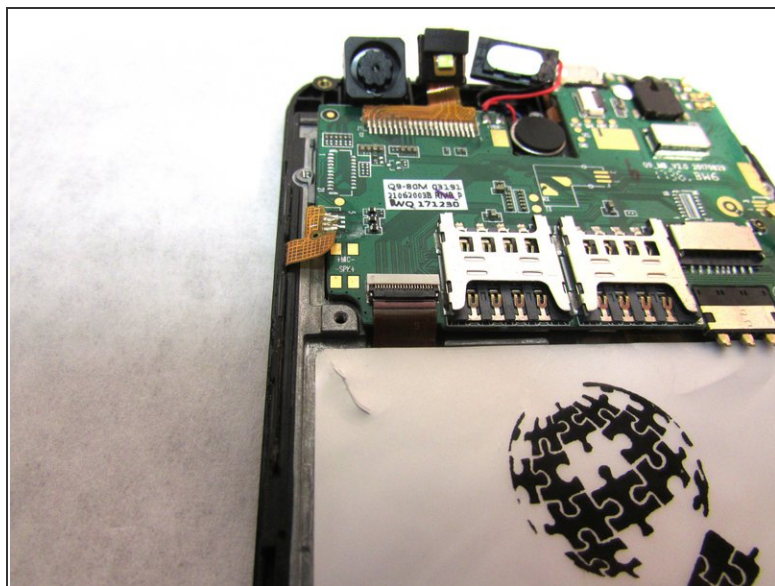
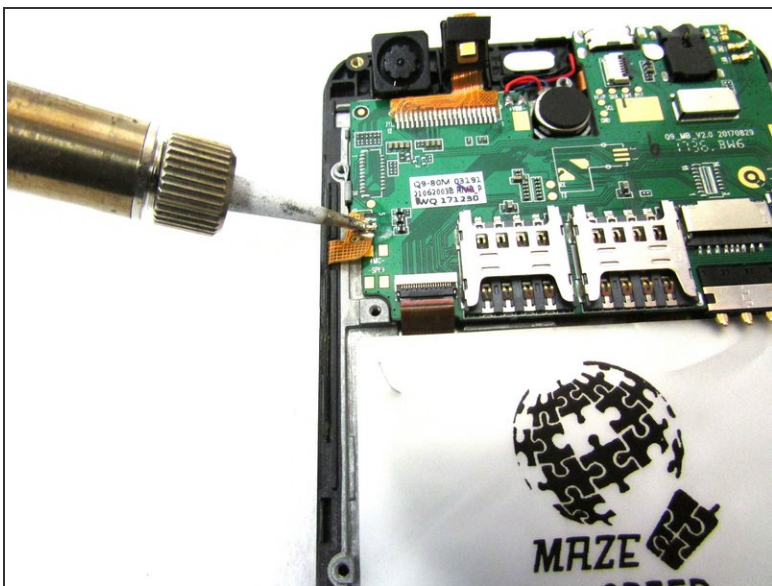
- Unscrew the 2mm screw at the bottom right of the motherboard.
- Remove the internal antenna casing from the motherboard.

Step 5



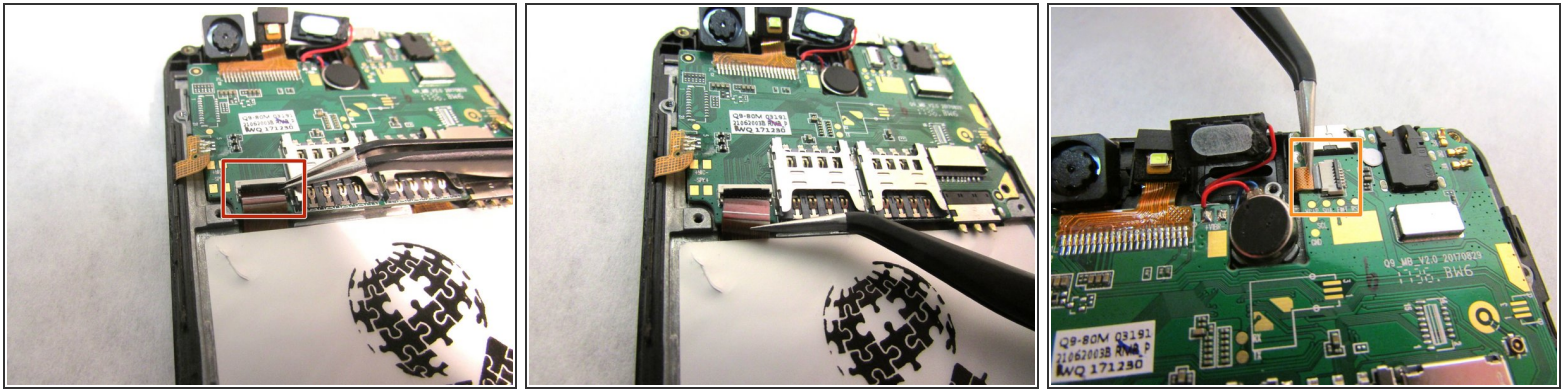
- Unplug the speaker at the top of the motherboard.

Step 6



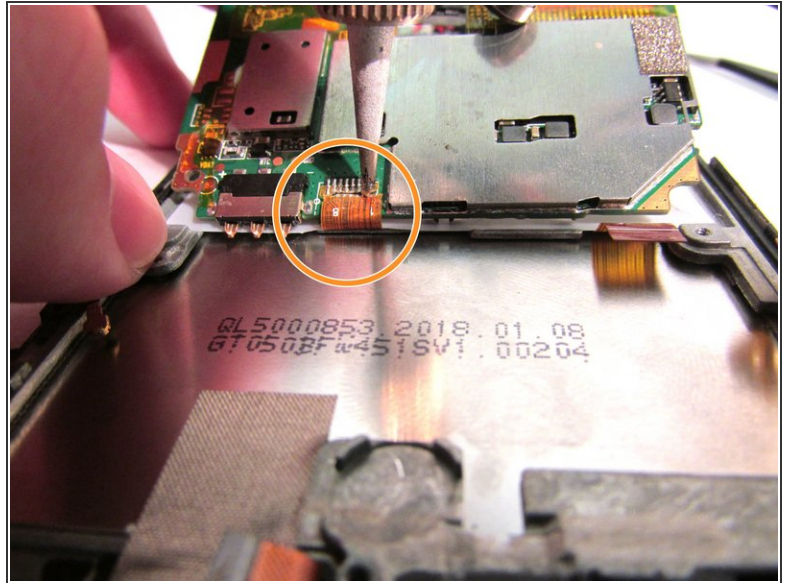
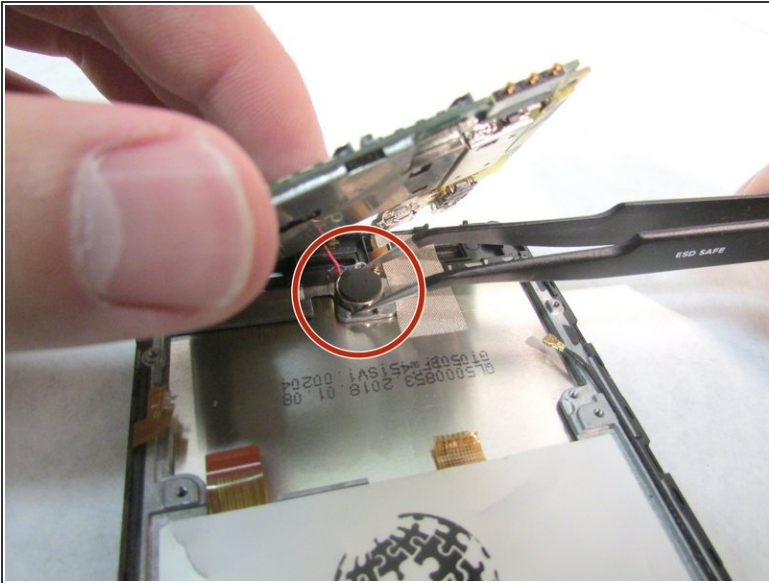
- [Desolder](#) the gold ribbon that is connected to the motherboard at the bottom left corner.


Step 7



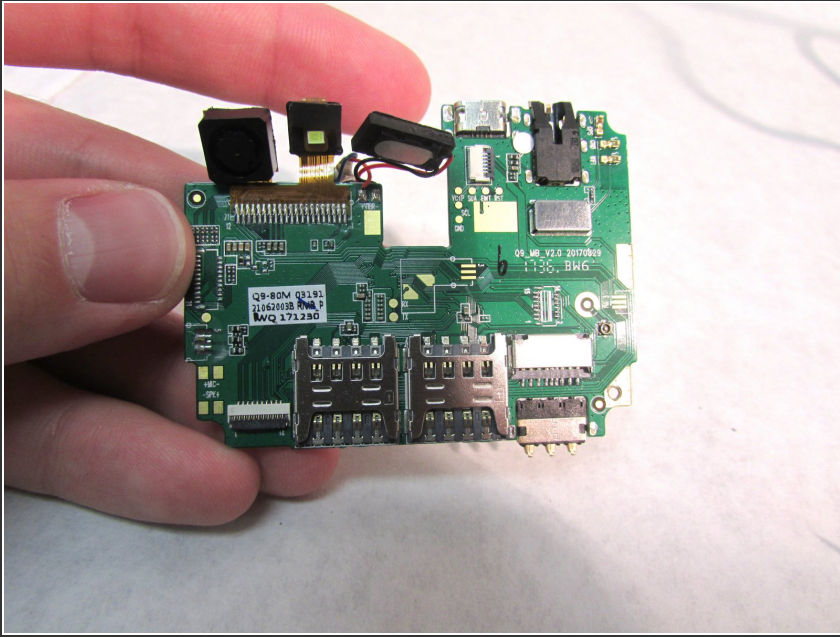
- Use tweezers to remove cable from the ZIF connectors located at the bottom left of the motherboard.
- Use the tweezers to remove the second cable from ZIF connector located to the right of the speaker that you unplugged in step five.
- ⓘ ZIF connector stands for Zero Insertion Force. Flip the small locking tap before removing the cable.

Step 8



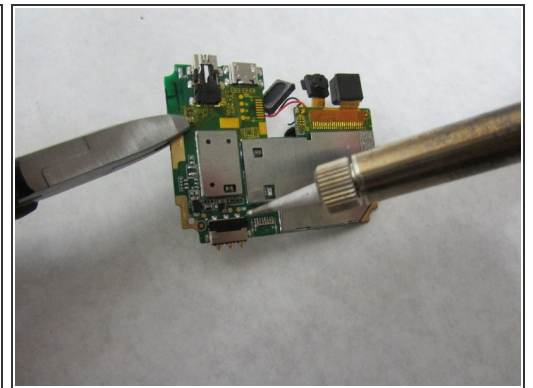
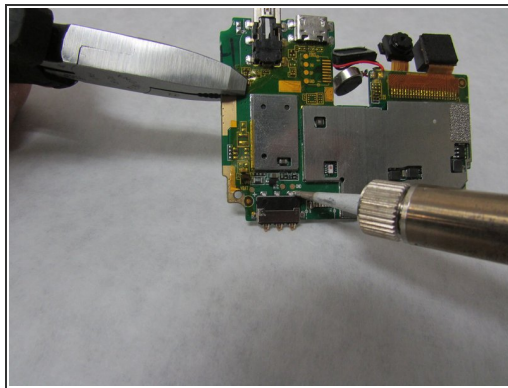
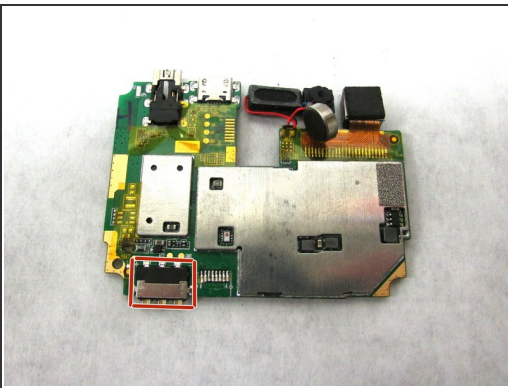
-  At this point, the motherboard should be able to be lifted up from the bottom.
- Use the tweezers to dislodge the speaker.
 - After the speaker is dislodged, flip the motherboard up so that you can see the cable.
 - Using a soldering tool, desolder the cable from the back of the motherboard.

Step 9



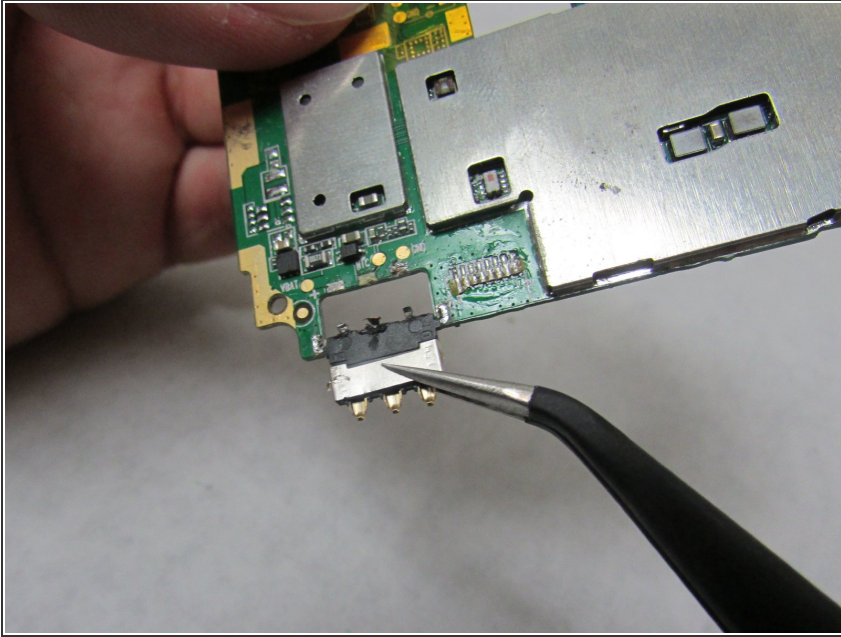
- Remove the motherboard from the back.

Step 10 — Battery Port



- Flip the motherboard upside down and you will see the battery port connected to the motherboard with 5 different soldered places.
- Use the pliers to hold the motherboard and desolder the 5 places which are connected to the motherboard.

Step 11



- Use the tweezers to pull out the battery port.
- Then, replace it with the new battery port.

To reassemble your device, follow these instructions in reverse order.