



# Meepo V2 Electric Skateboard Remote Accelerator Cable Replacement

How to replace a broken accelerator cable on a Meepo V2 Electric Skateboard Remote.

Written By: Emmaline Sylvester



---

## INTRODUCTION

In order to control the speed of your electric skateboard you must have a functioning accelerator. This step-by-step guide will assist you with replacing your accelerator in your Meepo V2 Electric Skateboard Remote in order to guarantee your remote is fully functional and safe to use.

---

### TOOLS:

- [Phillips #00 Screwdriver](#) (1)
-

## Step 1 — Accelerator Cable



- Peel off the brand sticker from the back of the remote.

## Step 2



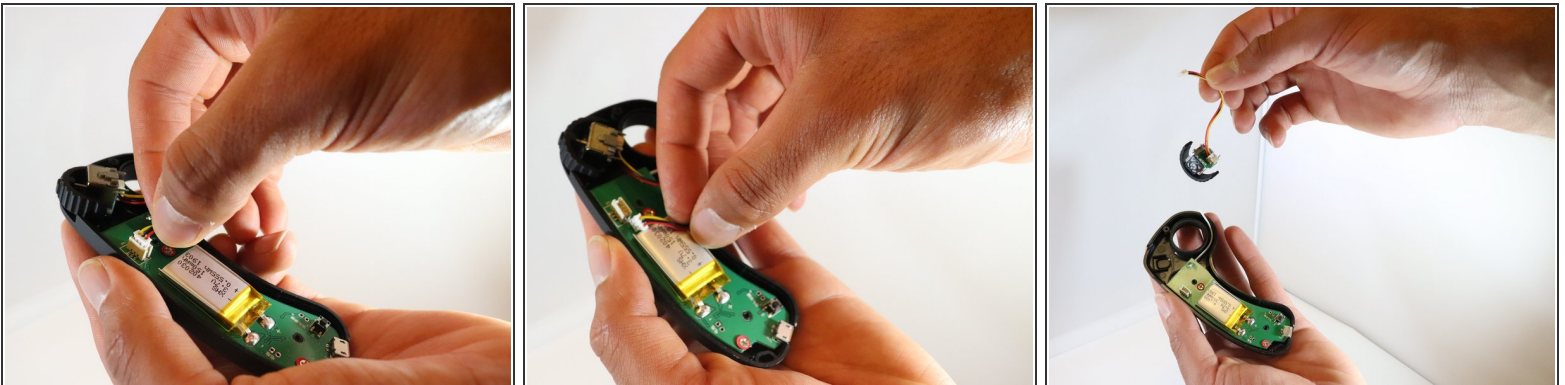
- Using a Phillips #1 screwdriver remove the three screws.

### Step 3



- Lift the backside of the remote off.
- The marked area is the accelerator cable that needs to be removed.

### Step 4



- Unplug the connector and remove the accelerator cable.

To reassemble your device, follow these instructions in reverse order.