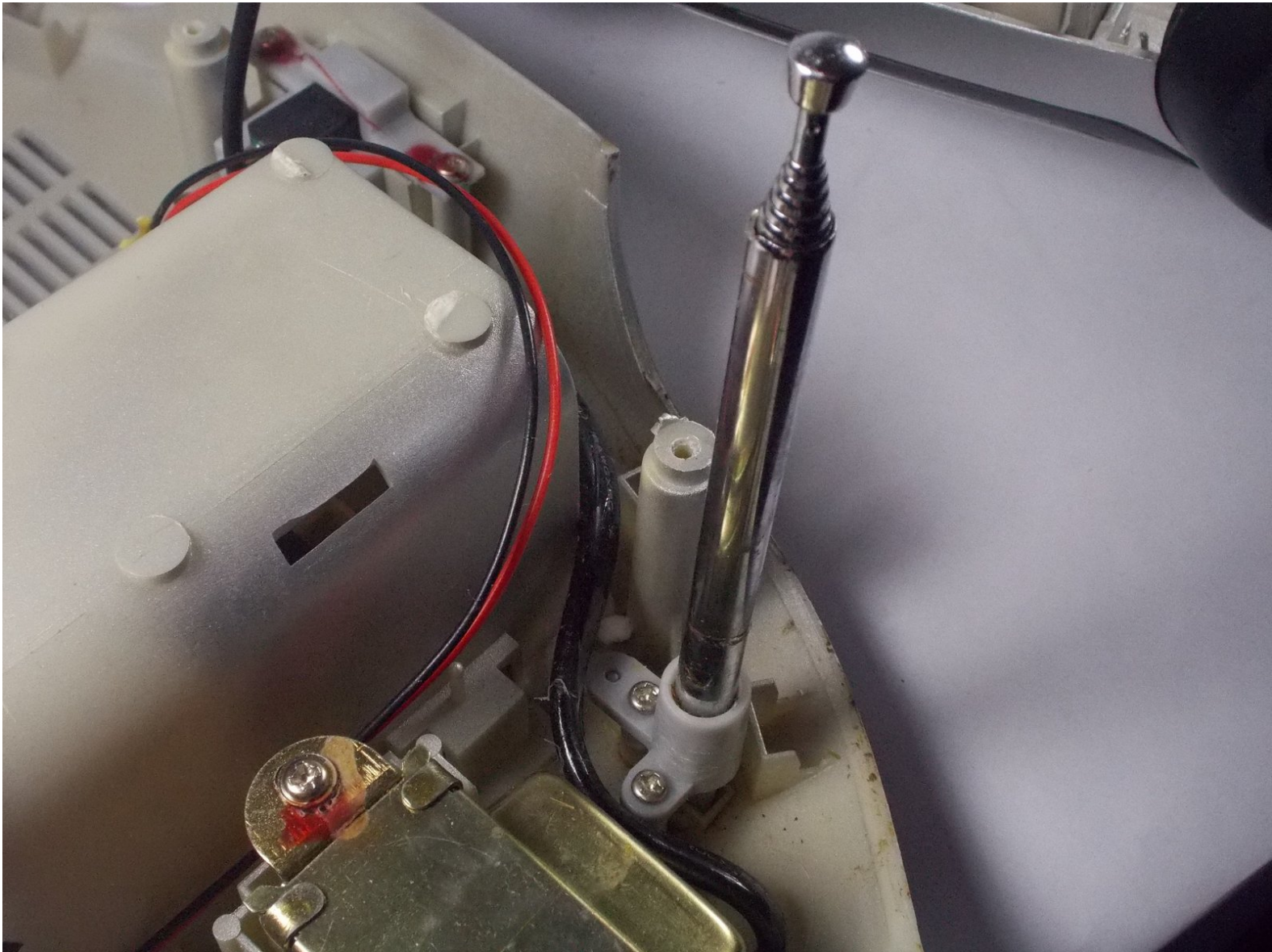




Memorex 2Xtreme MP3830-01 Antenna Replacement

Replace your broken antenna with one in working order for optimal AM/FM reception.

Written By: Meghan



INTRODUCTION

In this guide, a demonstration on how to replace the device's antenna will be given.



TOOLS:

- [Phillips #1 Screwdriver](#) (1)
-

Step 1 — Remove Bottom Shell



i Before disassembly, ensure that the boombox is powered off, unplugged and any batteries have been removed from the device.

- Begin by turning the boombox over so that the bottom is facing up.

! When turning the boombox over, the antenna will be pointing down. Take care that the antenna is not damaged when opening the device.

- Your boombox will have a total of 12 Phillips screws on the bottom. The location of the screws needed to remove the bottom panel are circled in red in the image to the left.

- Remove the 12 screws with a Phillips head screwdriver on the bottom panel.

★ One screw, in the upper left corner, does not need to be removed to disassemble the device. This screw is for the antenna.

Step 2

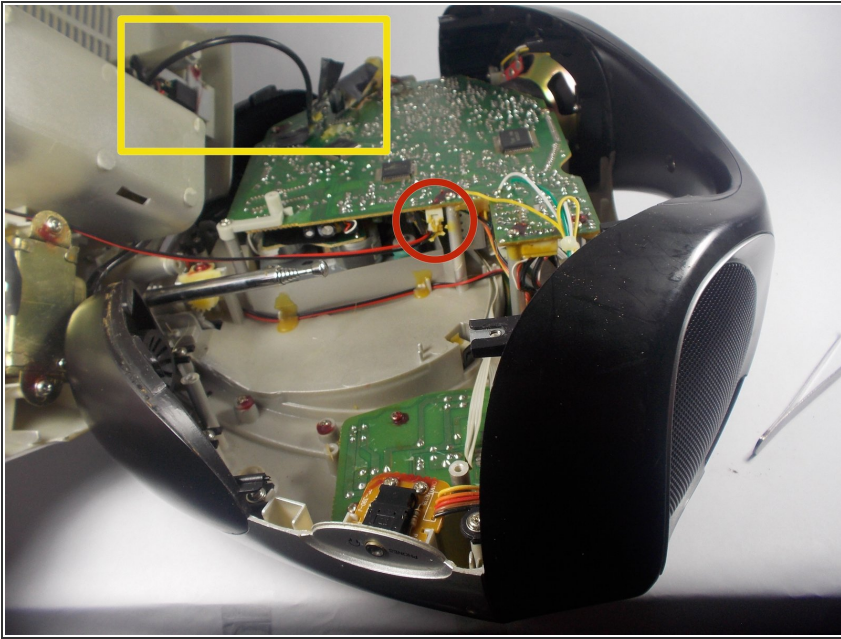


- With all 12 screws removed, it is possible to detach the plastic bottom cover from the top half of the boombox.
- Push the bottom shell back slightly before pulling it up. The plastic bottom will lift up directly but there is a lip that fits under the black handle that must first be exposed, as seen in the image on the left.

★ The boombox's antenna must be straight in order for the bottom cover to be pulled up.

⚠ Several wires run between the bottom half and top half of the boombox. Take care not to damage or otherwise tear the wiring when opening the device.

Step 3



- The boombox should now be in two separate pieces, connected only by two wires.
 - Disconnect the red and black wires by gently grasping its white plastic end and pulling it out of its socket (circled in red on the image to the left).
 - Additionally, the black wire highlighted in the square yellow box in the image to the left is taped onto the main board. This tape may be safely removed to give the wire more slack when separating the two halves of the boombox.
- i** The power supply and antenna are located on the bottom half of the boombox while the headphone jack, function buttons and lcd screen are located on the top half.

Step 4 — Antenna



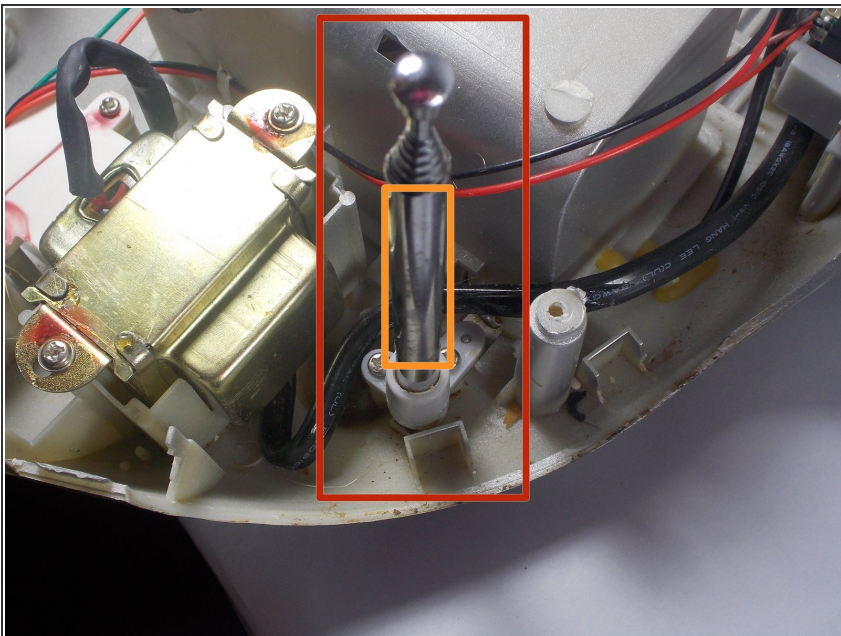
- Begin by taking the bottom half of the the disassembled boombox and locating the antenna screw.
- With the boombox laying flat and the handle face towards you, the antenna screw will be located on the top left of the device next to the battery compartment.
- ⓘ The antenna screw is the only one without a parallel screw on the other side of the device.

Step 5



- Once you have located the screw, use the screwdriver to unscrew it, turning the screwdriver counterclockwise until it is loosened enough to be removed.

Step 6



- You will now be left with the antenna standing straight up from the bottom half of the device.
- At this point the antenna can be removed with a simple pull upwards.
- ⓘ Be sure to grab the antenna by the base shaft (the orange square), as grabbing the top will just extend the antenna.

Step 7



- You will now be left with the broken antenna, and be a socket to put the new antenna in.

To reassemble your device, follow these instructions in reverse order.