



Memorex 2Xtreme MP3830-01 CD Cover Latch Replacement

Replacing the device's CD cover latch to ensure the cover is able to close and keep your CD in place.

Written By: Meghan



INTRODUCTION

The latch is a simple part to replace and must be working in order to use the CD player.



TOOLS:

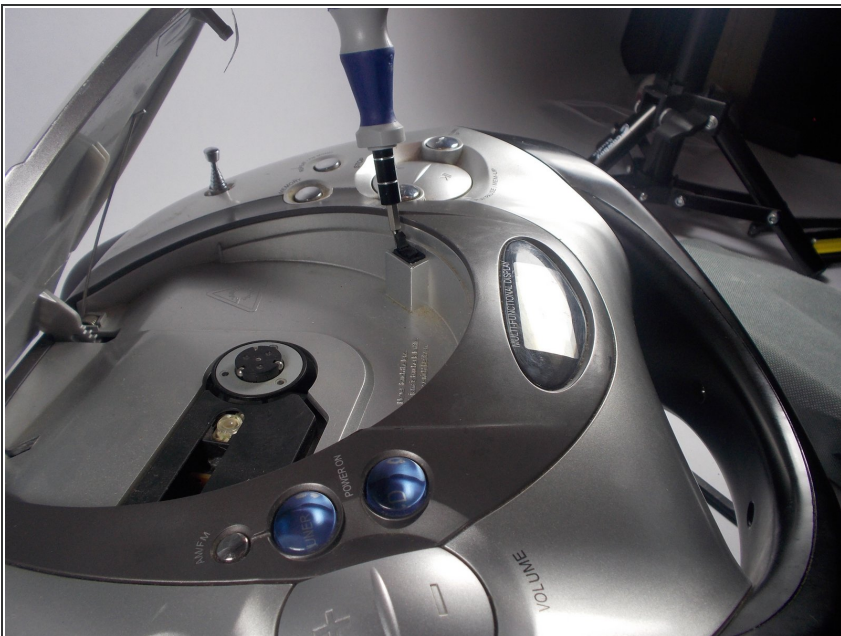
- [Flathead Screwdriver](#) (1)
-

Step 1 — CD Cover Latch



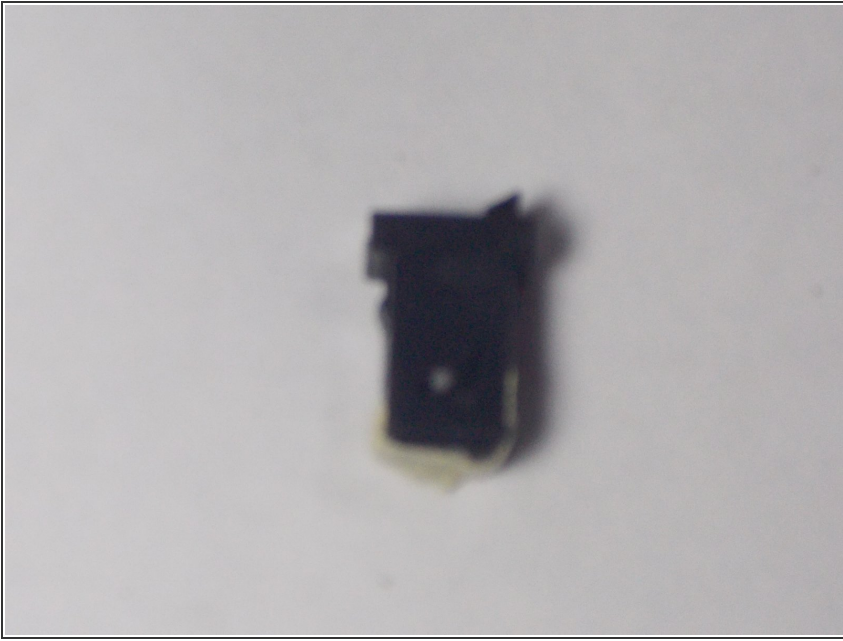
- Open the CD cover so that the latch can be accessed.

Step 2



- Using a 3/16" flat head screwdriver, gently pry in the corner of the latch and the boombox housing.
- You should see the latch pop out of the housing a little bit.
- Then move to the opposite side of the latch and gently pry there.
- Keep moving back and forth until the latch comes loose and can be removed with your fingers.

Step 3



- When the latch is removed, it should look like the part in the picture.

To reassemble your device, follow these instructions in reverse order.