



Memorex Mi3X Minimove Back Panel

This guide explains how to disassemble the back panel of the Memorex Mi3X Minimove.

Written By: Michael Johnson



INTRODUCTION

If you need to replace the back panel of the Minimove boombox, follow the steps from this guide. This guide will involve moderate disassembly of the device, including the removal of the back covering and base.



TOOLS:

- [Phillips #1 Screwdriver](#) (1)
 - [Phillips #00 Screwdriver](#) (1)
 - [iFixit Opening Tools](#) (1)
-

Step 1 — Back Panel



- Remove the two plastic screw covers on the back of your Minimove by inserting the flat end of your plastic opening tool between the screw cover and the back panel and prying it out.

i It may be helpful to pull the plastic covers out with your fingers once the top of the cover has been revealed by using the plastic opening tool.

Step 2



- i** This step will require at least a 30 mm Phillips #1 screwdriver.
- Use a Phillips #1 screwdriver to remove the two 12 mm screws.

Step 3



- i** The bottom panel screws and screw covers must be removed in order to access the back panel.
- Remove the four grey screw covers by inserting the plastic opening tool underneath the screw covers and rotating around the circumference.
- ★ The adhesive on the screw covers should be sticky enough to put the covers back on when re-assembling the device.

Step 4



- Remove the two 8 mm screws with a Phillips #1 screwdriver.
- Remove the two 12 mm screws with a long Phillips #1 screwdriver.


Step 5



- To remove the back panel, use the plastic opening tool and gently work around the outline of the panel. The outline wraps around the sides and can be spotted at the top back of the device.

Step 6



 Be careful not to use too much force to remove the panel. The antenna wire is connected to the inside of the panel and may be damaged or ripped off if the panel is not gently removed.

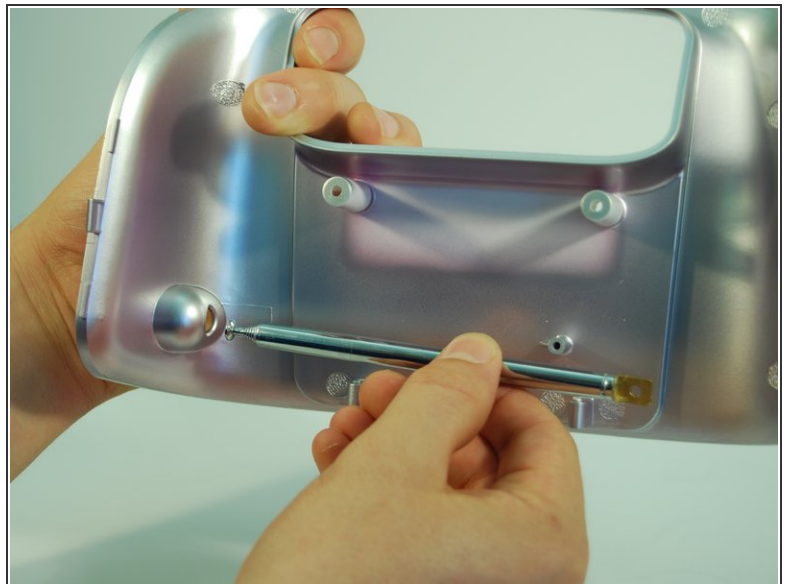
- After loosening the panel with the plastic opening tool, use moderate force to pry open the panel with your hands.
- **Carefully pull the panel off.**

Step 7



- Use a Phillips #1 screwdriver to detach the wire from the back panel by removing the 8 mm screw connecting the wire to the antenna.

Step 8



- If desired, the antenna can now be removed by pulling **inwards** and horizontal to the panel bottom.

Step 9



- Use the Phillips #1 screwdriver to remove the four 12 mm screws.
- Remove the five 6 mm screws at the top with the same screwdriver.

Step 10



- Use a Phillips #1 screwdriver and remove the two vertical 8 mm screws from the top.

Step 11



- Pry open the inner back panel by inserting the plastic opening tool in the crack at the top corner.
- Use moderate force to pry it open and take the cover off.

To reassemble your device, follow these instructions in reverse order.