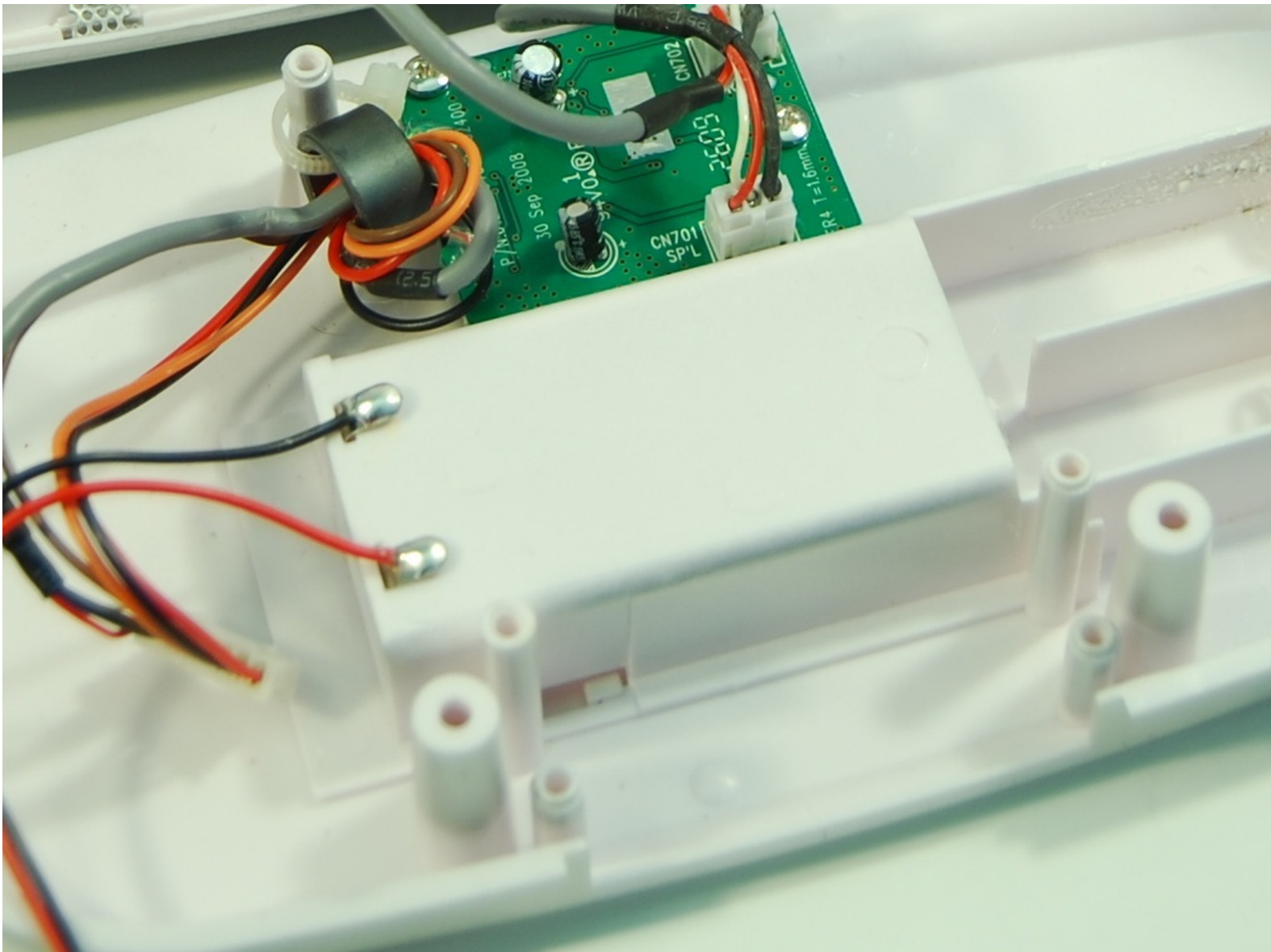




Memorex Mi3X Minimove Battery Wire Replacement

Battery pack not working like it is supposed to? Use this guide to desolder the wires to replace them.

Written By: Jeyca Domingo



INTRODUCTION

If the Minimove is not turning on when new batteries are used, the battery wires may have come loose or disconnected. With this guide, you will replace the battery wires for the Minimove by soldering. For more information on soldering reference the iFixit soldering [guide](#).



TOOLS:

- [IC Extractor/Connector Puller](#) (1)
 - [iFixit Opening Tools](#) (1)
 - [Phillips #1 Screwdriver](#) (1)
 - [Phillips #00 Screwdriver](#) (1)
 - [Soldering Iron](#) (1)
 - [Solder](#) (1)
 - [Desoldering Pump](#) (1)
-

Step 1 — Back Panel



- Remove the two plastic screw covers on the back of your Minimove by inserting the flat end of your plastic opening tool between the screw cover and the back panel and prying it out.

i It may be helpful to pull the plastic covers out with your fingers once the top of the cover has been revealed by using the plastic opening tool.

Step 2



- i** This step will require at least a 30 mm Phillips #1 screwdriver.
- Use a Phillips #1 screwdriver to remove the two 12 mm screws.

Step 3



- i** The bottom panel screws and screw covers must be removed in order to access the back panel.
- Remove the four grey screw covers by inserting the plastic opening tool underneath the screw covers and rotating around the circumference.
- ★ The adhesive on the screw covers should be sticky enough to put the covers back on when re-assembling the device.

Step 4



- Remove the two 8 mm screws with a Phillips #1 screwdriver.
- Remove the two 12 mm screws with a long Phillips #1 screwdriver.


Step 5



- To remove the back panel, use the plastic opening tool and gently work around the outline of the panel. The outline wraps around the sides and can be spotted at the top back of the device.

Step 6



 Be careful not to use too much force to remove the panel. The antenna wire is connected to the inside of the panel and may be damaged or ripped off if the panel is not gently removed.

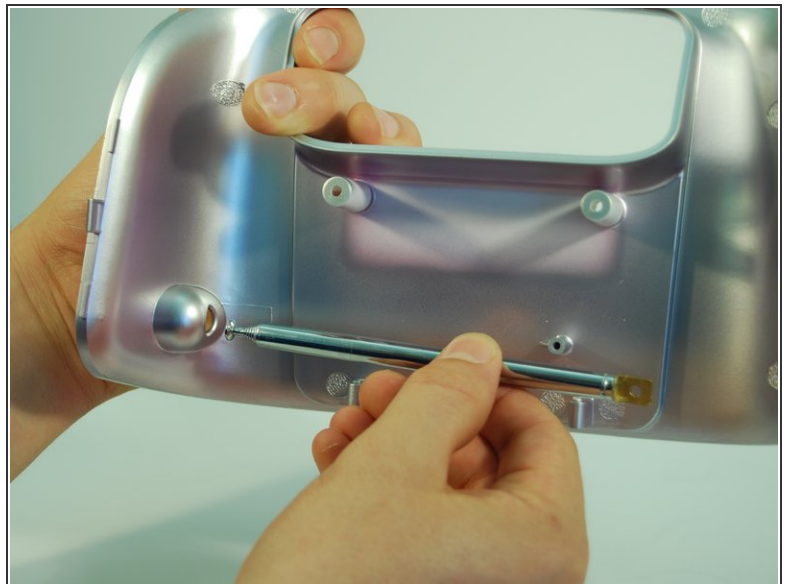
- After loosening the panel with the plastic opening tool, use moderate force to pry open the panel with your hands.
- **Carefully pull the panel off.**

Step 7



- Use a Phillips #1 screwdriver to detach the wire from the back panel by removing the 8 mm screw connecting the wire to the antenna.

Step 8



- If desired, the antenna can now be removed by pulling **inwards** and horizontal to the panel bottom.

Step 9



- Use the Phillips #1 screwdriver to remove the four 12 mm screws.
- Remove the five 6 mm screws at the top with the same screwdriver.

Step 10



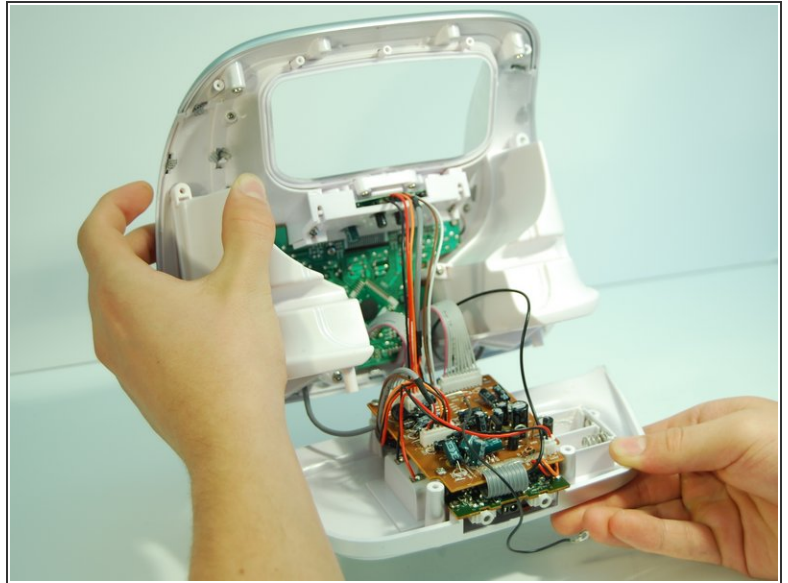
- Use a Phillips #1 screwdriver and remove the two vertical 8 mm screws from the top.


Step 11



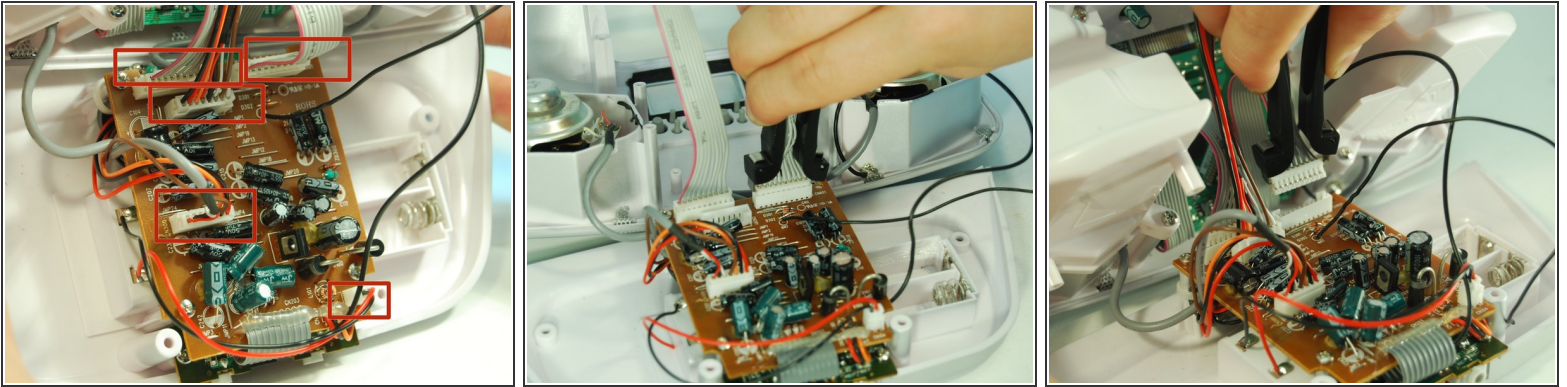
- Pry open the inner back panel by inserting the plastic opening tool in the crack at the top corner.
- Use moderate force to pry it open and take the cover off.

Step 12 — Battery Pack Wire



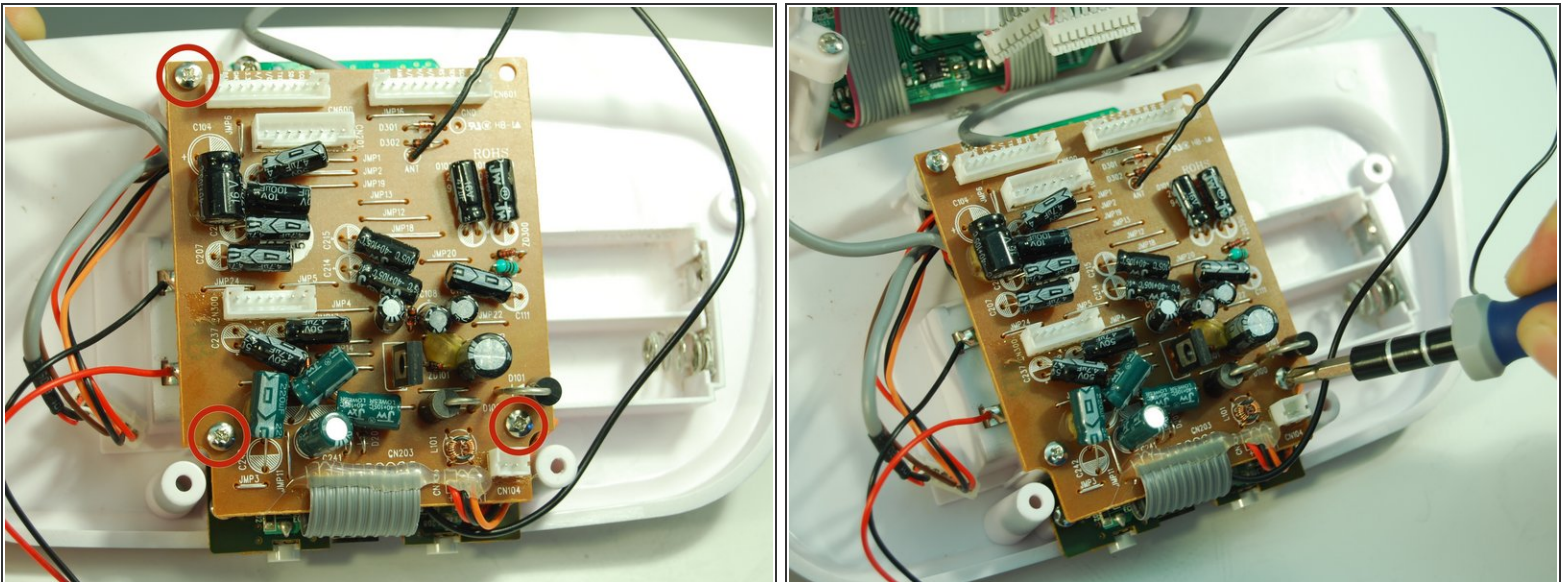
-  Be careful when removing the bottom panel. The plastic tab that runs alongside the right speaker between the upper brown radio motherboard and the lower green audio daughterboard may damage the device if the bottom panel is improperly removed.
- Remove the bottom panel of the boombox by carefully pulling the panel straight backwards from the boombox until the motherboard and daughterboard are free.

Step 13



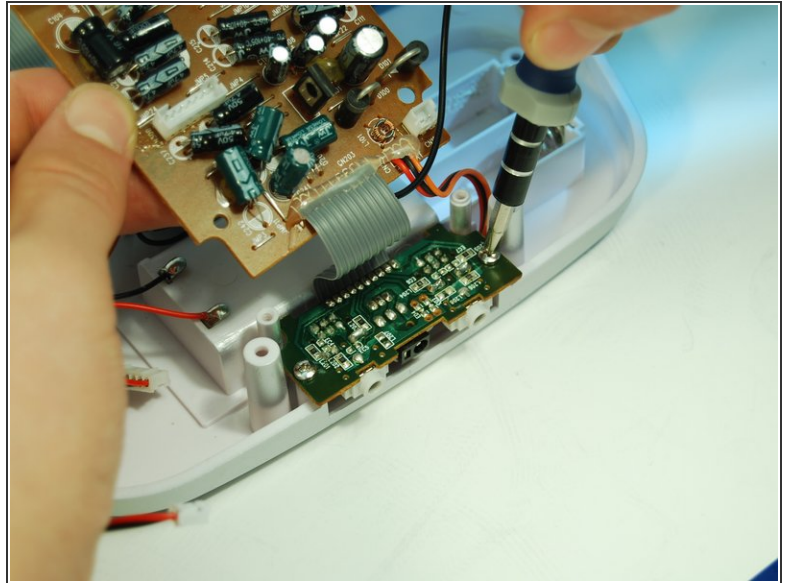
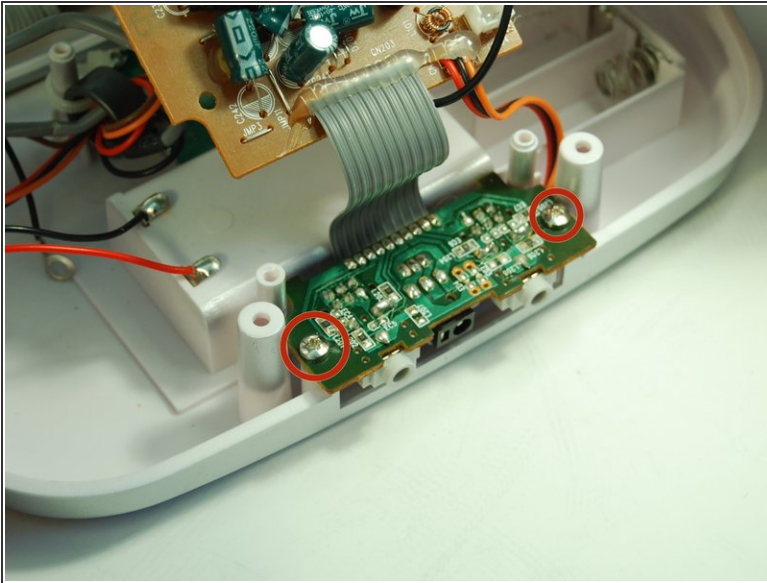
- Pull out the 5 white pinhead connectors using an IC (Integrated Circuit) extractor. Pinch the IC extractor just under the top lip of the wire housing.
- ❗ There are two 10 pin connectors, one 8 pin connector, one 7 pin connector, and one 2 pin connector.
- ❗ When reassembling, there is only one way to reinsert the pinhead connectors. Make sure the orientation matches that of the receiving connector on the motherboard.

Step 14



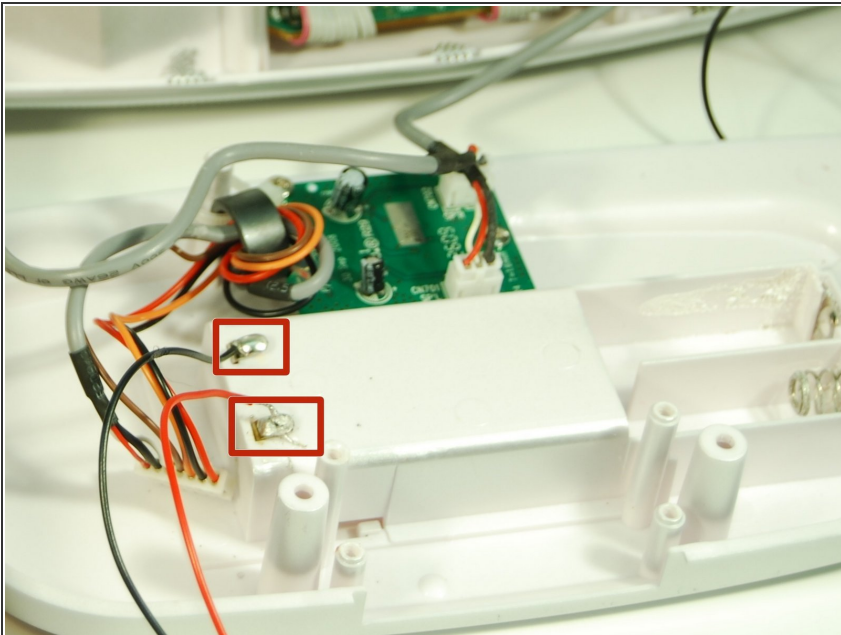
- Use the Phillips #1 Screwdriver to remove the three 8 mm screws holding the motherboard in place.

Step 15



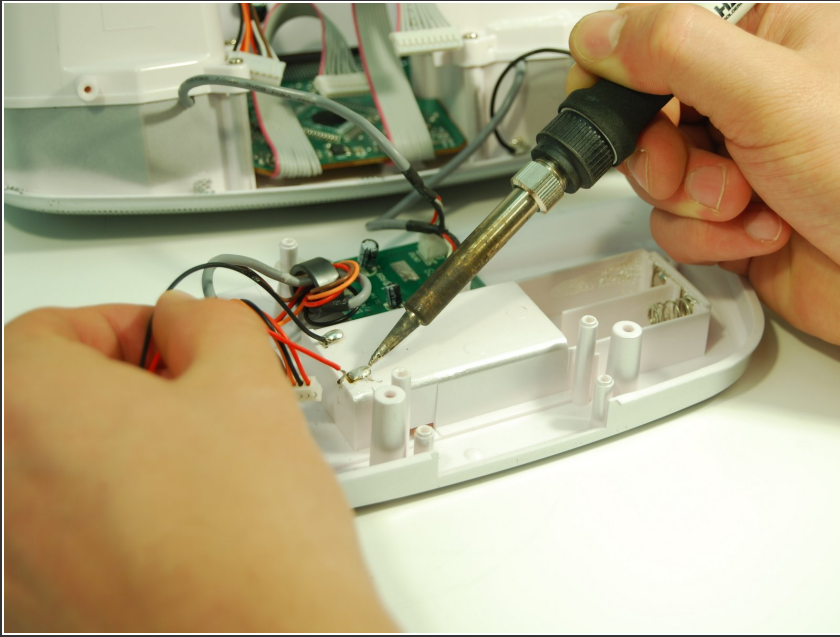
- Detach the smaller green audio port daughterboard by removing the two 8 mm screws with a Phillips #1 screwdriver.

Step 16



- ① The black ground wire is located at the top by the speaker daughterboard and the red power wire is located below.
- Locate two wires, one red and one black, located on the left side of the battery pack.

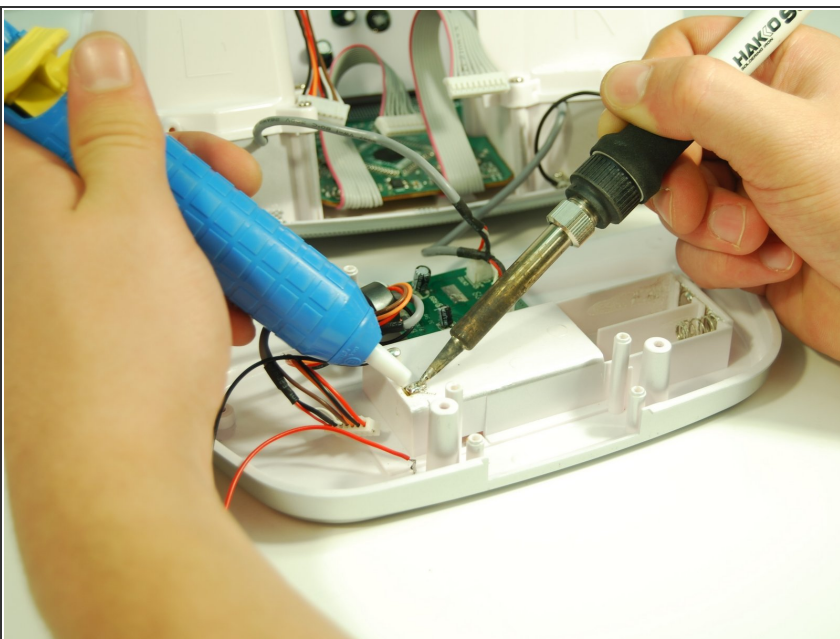
Step 17



⚠ Be careful when using the soldering iron. Do not let it come into contact with the boards or your skin.

- Heat up the soldering iron to around 600 Fahrenheit / 315 Celsius.
- Place the tip of the soldering iron on the solder where the wire is connected and melt it until you can detach the wire.
- Visit the soldering iron [guide](#) for more help with desoldering and soldering.

Step 18



- After detaching the wire, move it away from the device.
- Use a desoldering pump while the solder is still liquid to remove excess solder.

To reassemble your device, follow these instructions in reverse order.