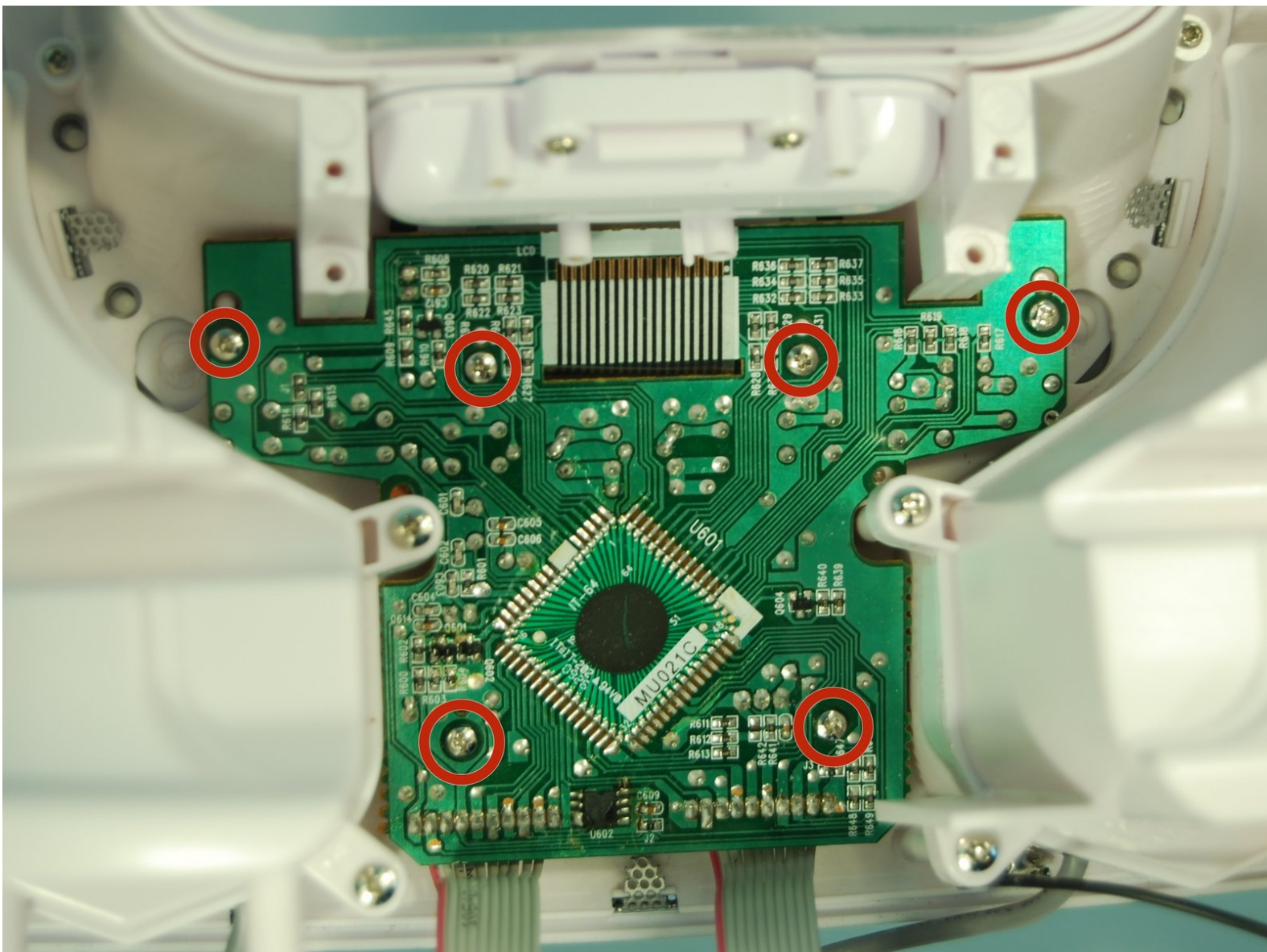




# Memorex Mi3X Minimove Display Replacement

Display not working or being unresponsive? This is a replacement guide showing how to replace the display found in a Memorex Mi3X Minimove boombox.

Written By: Devan Carlson



---

## INTRODUCTION

You may have broken the display to your Minimove boombox. This guide will direct you in removing the current display and re-installing a new one. The display is part of a daughterboard that must be replaced altogether if your display is not working. This guide will require extensive disassembly of the Minimove.



### TOOLS:

- [Phillips #00 Screwdriver](#) (1)
  - [Phillips #1 Screwdriver](#) (1)
  - [iFixit Opening Tools](#) (1)
  - [IC Extractor/Connector Puller](#) (1)
-

## Step 1 — Back Panel



- Remove the two plastic screw covers on the back of your Minimove by inserting the flat end of your plastic opening tool between the screw cover and the back panel and prying it out.

**i** It may be helpful to pull the plastic covers out with your fingers once the top of the cover has been revealed by using the plastic opening tool.

## Step 2



- i** This step will require at least a 30 mm Phillips #1 screwdriver.
- Use a Phillips #1 screwdriver to remove the two 12 mm screws.



### Step 3



- i** The bottom panel screws and screw covers must be removed in order to access the back panel.
- Remove the four grey screw covers by inserting the plastic opening tool underneath the screw covers and rotating around the circumference.
- ★ The adhesive on the screw covers should be sticky enough to put the covers back on when re-assembling the device.

### Step 4



- Remove the two 8 mm screws with a Phillips #1 screwdriver.
- Remove the two 12 mm screws with a long Phillips #1 screwdriver.


## Step 5



- To remove the back panel, use the plastic opening tool and gently work around the outline of the panel. The outline wraps around the sides and can be spotted at the top back of the device.

## Step 6



 Be careful not to use too much force to remove the panel. The antenna wire is connected to the inside of the panel and may be damaged or ripped off if the panel is not gently removed.

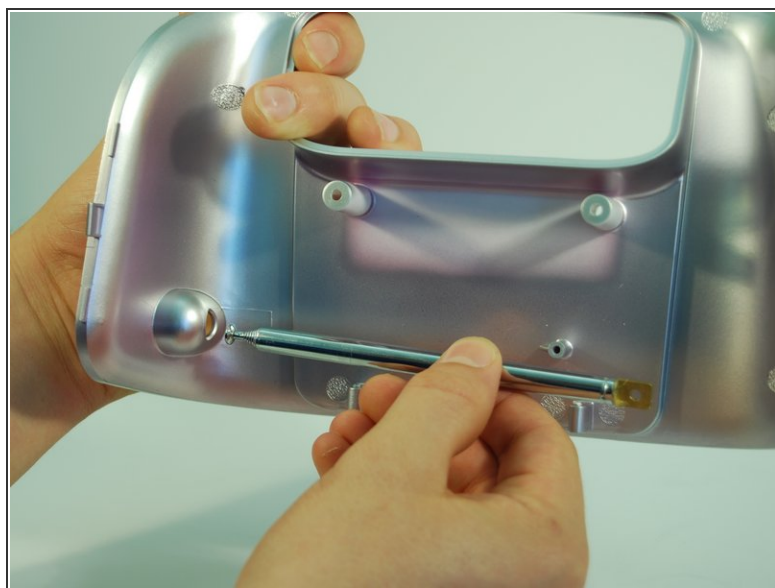
- After loosening the panel with the plastic opening tool, use moderate force to pry open the panel with your hands.
- **Carefully pull the panel off.**

## Step 7



- Use a Phillips #1 screwdriver to detach the wire from the back panel by removing the 8 mm screw connecting the wire to the antenna.

## Step 8



- If desired, the antenna can now be removed by pulling **inwards** and horizontal to the panel bottom.



## Step 9



- Use the Phillips #1 screwdriver to remove the four 12 mm screws.
- Remove the five 6 mm screws at the top with the same screwdriver.

## Step 10



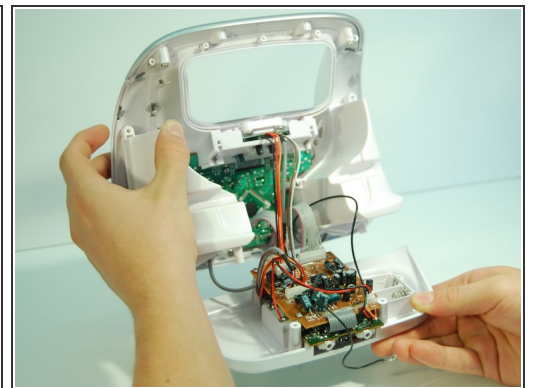
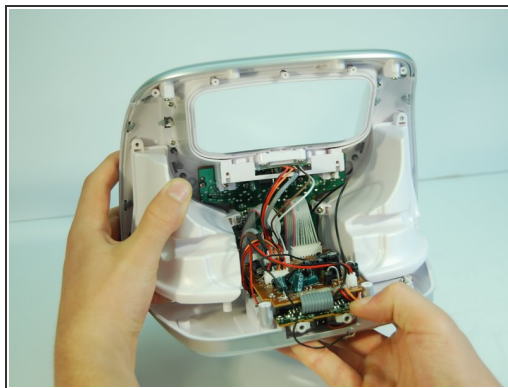
- Use a Phillips #1 screwdriver and remove the two vertical 8 mm screws from the top.


## Step 11



- Pry open the inner back panel by inserting the plastic opening tool in the crack at the top corner.
- Use moderate force to pry it open and take the cover off.

## Step 12 — iPod Adapter

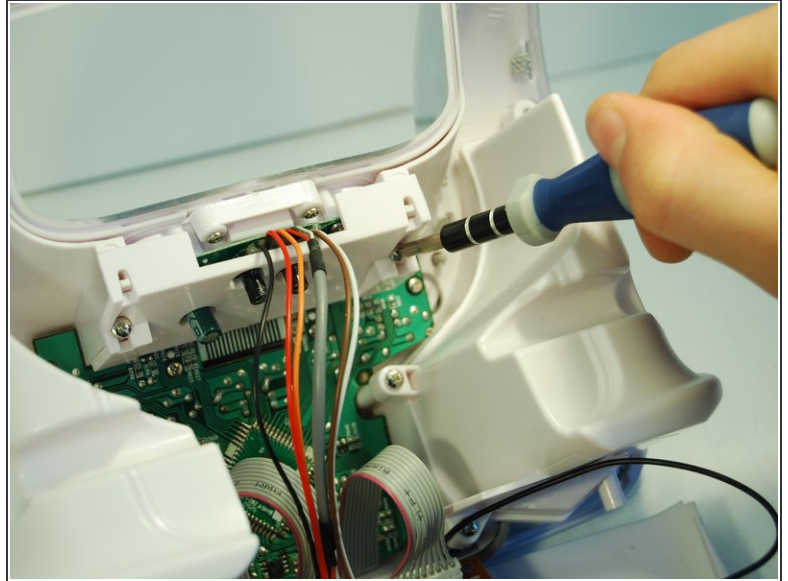
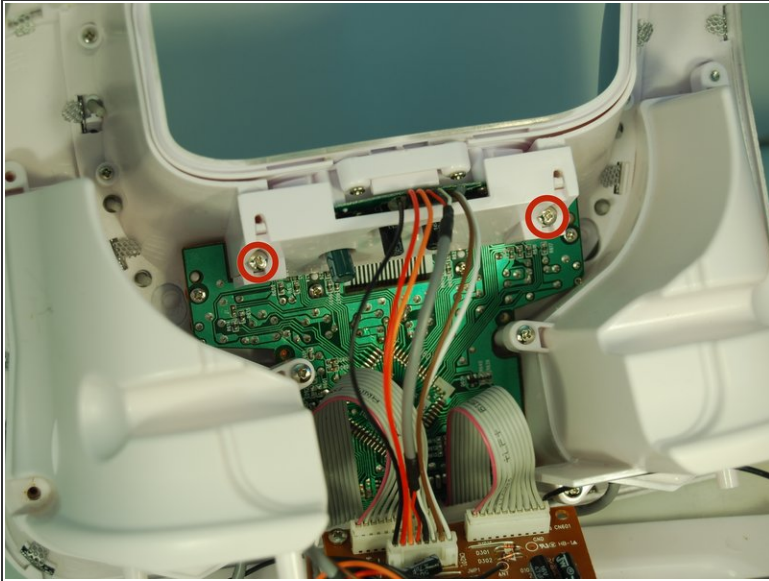


 Be careful when removing the bottom panel. The plastic tab that runs alongside the right speaker between the upper brown radio motherboard and the lower green audio daughterboard may damage the device if the bottom panel is removed improperly.

- Remove the bottom panel of the boombox by carefully pulling the panel straight backwards from the boombox until the boards are free.

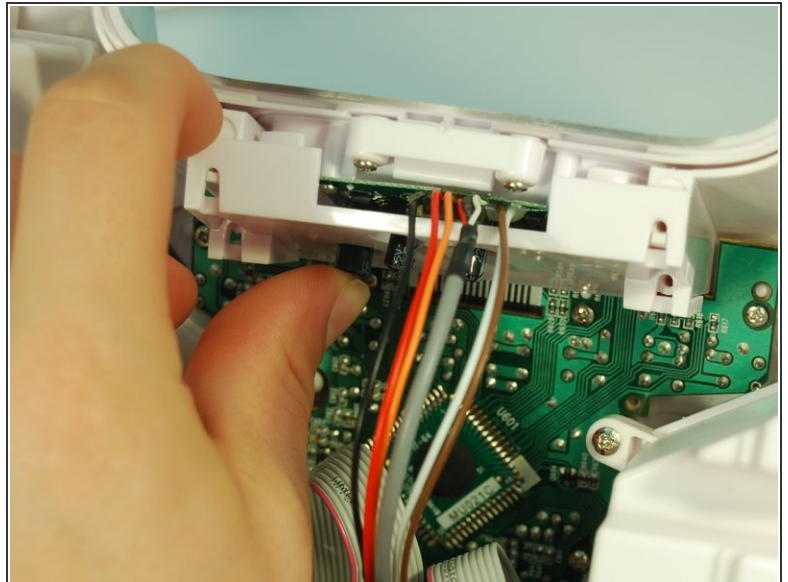
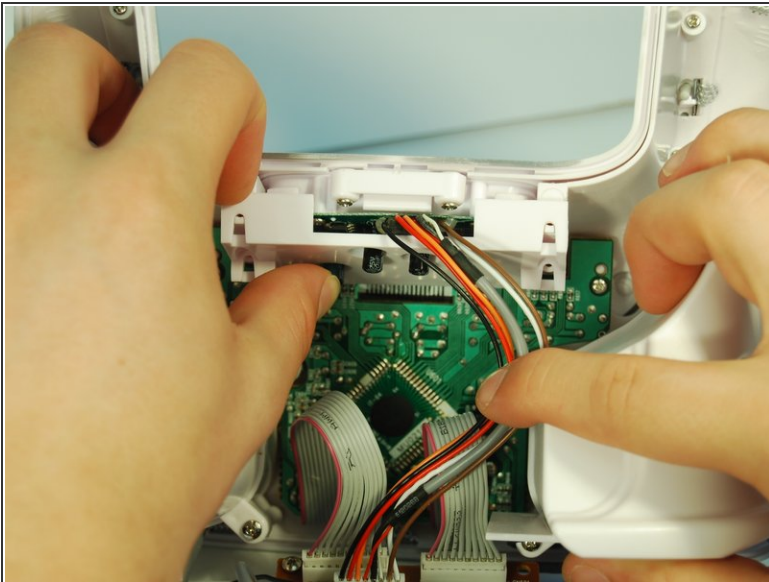


## Step 13



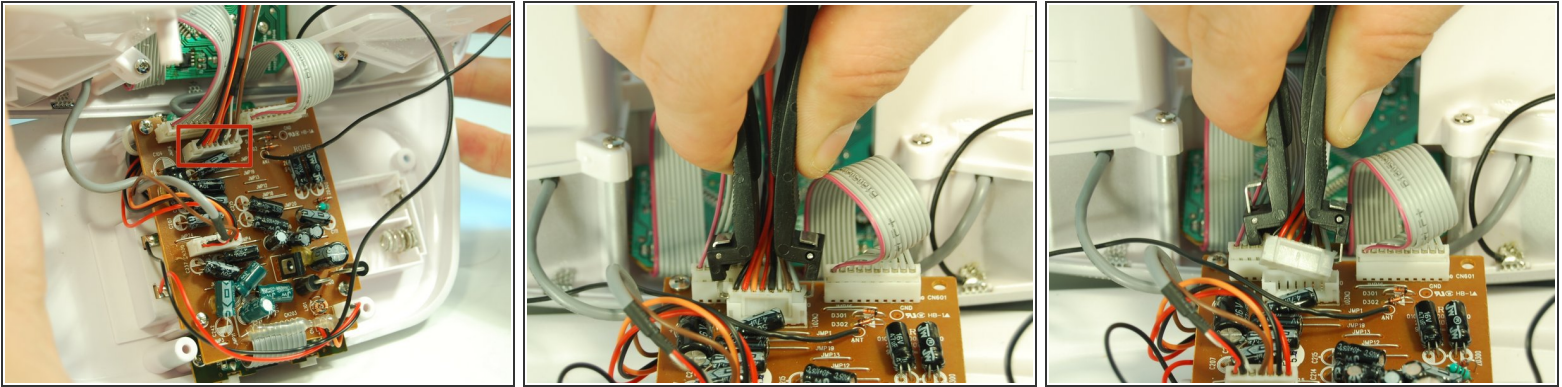
- Use a Phillips #1 screwdriver to remove the two 8 mm screws encasing the iPod adapter near the top of the device.

## Step 14



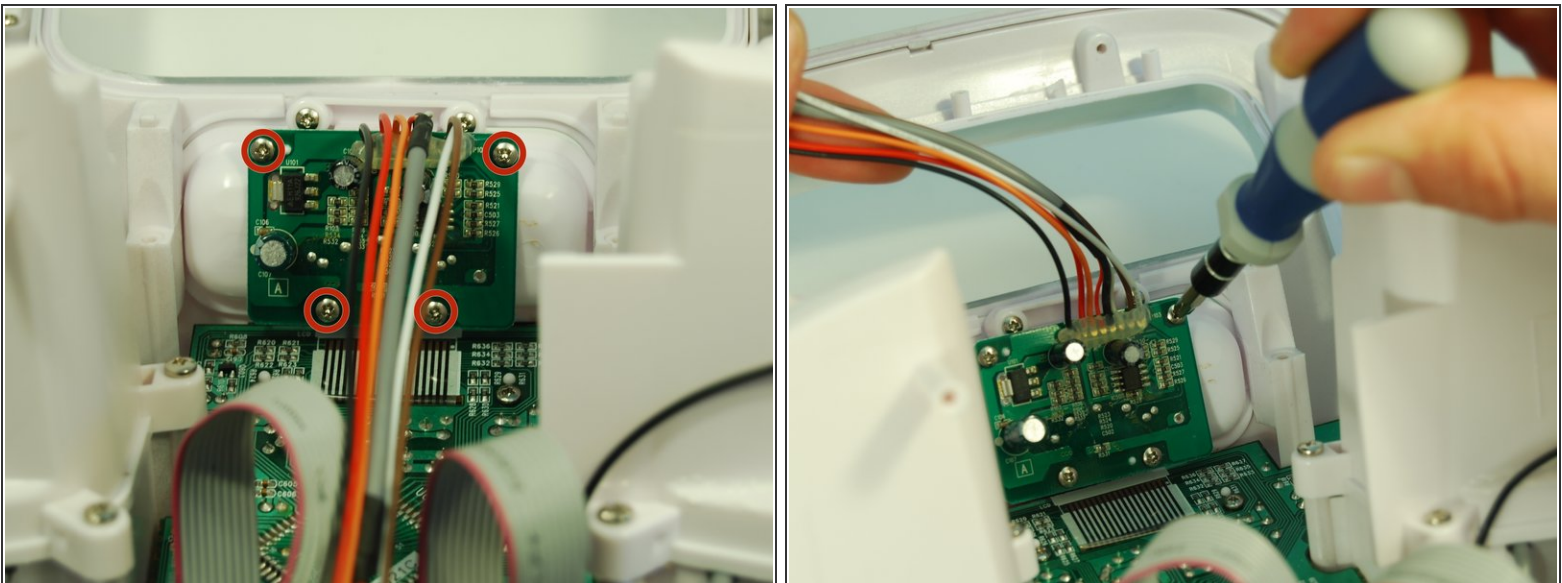
- Use moderate force to pry the plastic casing off with your finger while pushing with your thumb against the black, round capacitors.

## Step 15



- Follow the wires attaching to the iPod adapter and use the IC (Integrated Circuit) extractor to remove the indicated wire connectors from the motherboard.
- Pinch the IC extractor just under the top lip of the wire housing.

## Step 16



- Going back to the small green daughterboard, unscrew the four 6 mm screws with a Phillips #1 screwdriver.

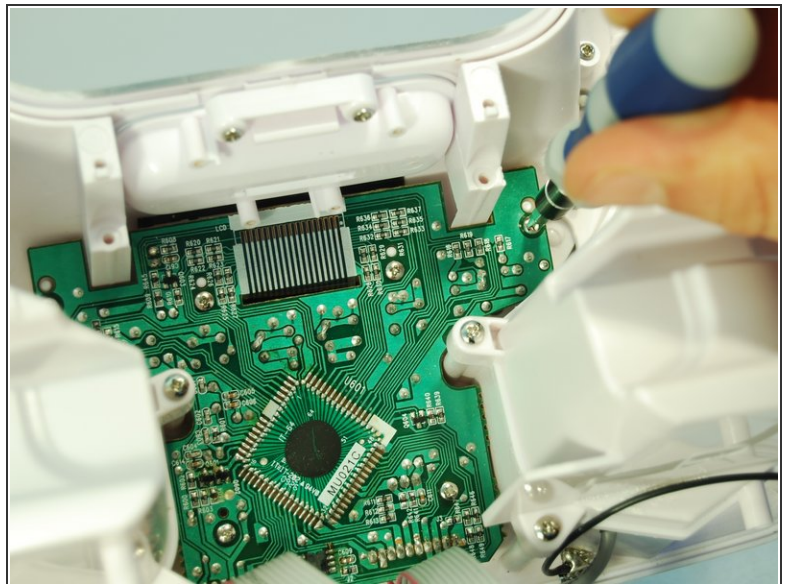
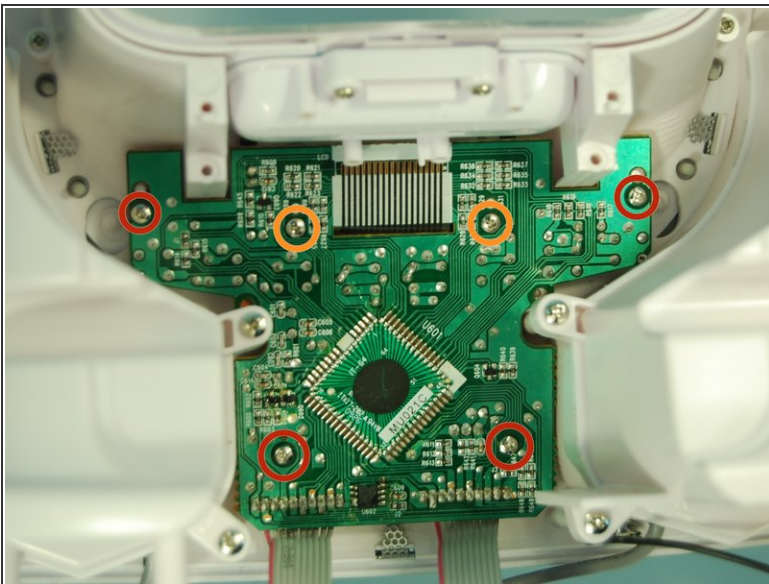


## Step 17



- Remove the iPod adapter by sliding it out of the slot.

## Step 18 — Display



- Locate and unscrew the four 8mm screws (in red) along the edge with a Phillips #1 screwdriver.
- Unscrew the two 12mm screws (in orange) on the inside of the daughterboard.

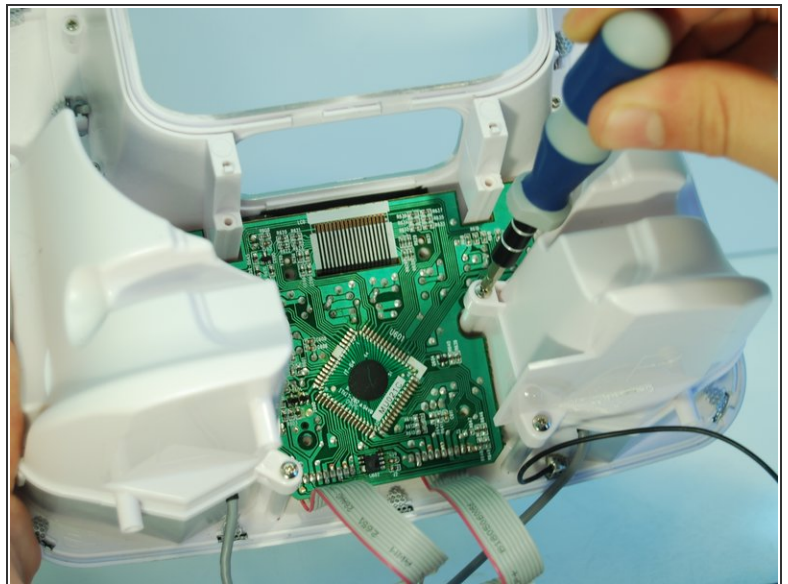
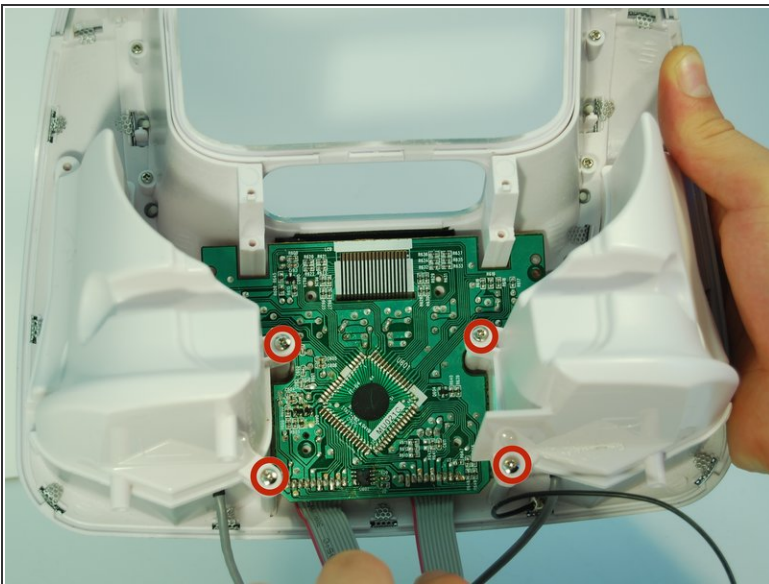


## Step 19



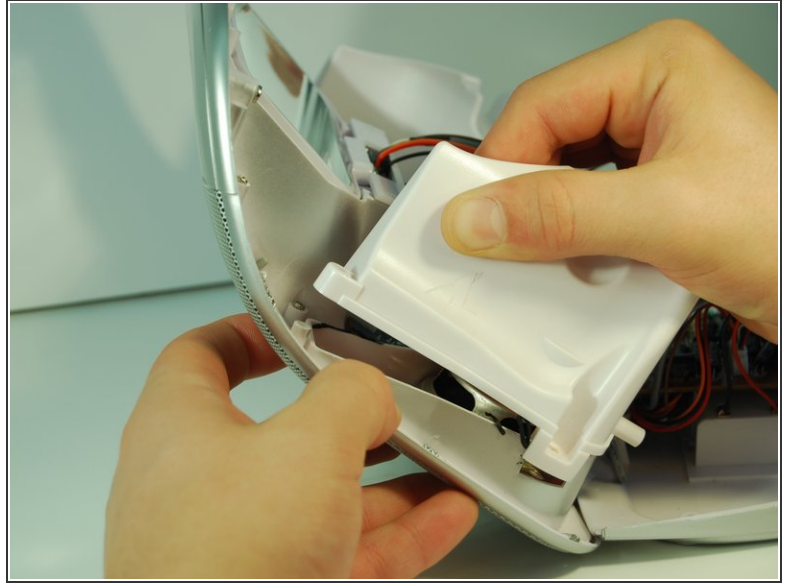
- Slide out the iPod adapter housing by applying moderate pressure with your two index fingers from the inside as well as your thumb downward.

## Step 20



- Remove the four 8 mm screws using a Phillips #1 screwdriver.


## Step 21



- i** The speaker housing may require more force than expected to remove because it is held together by a thin layer of rubber. Do not be afraid of using more force if you are unable to remove it on the first try.
- i** When the housing is removed the rubber adhesive will come off. This should not effect your device's functionality in any way.
- Grab the outside of one speaker housing and pull outwards (starting with the top) while holding the main casing still with your other hand.
  - Remove the other housing on the opposite side the same way.

## Step 22

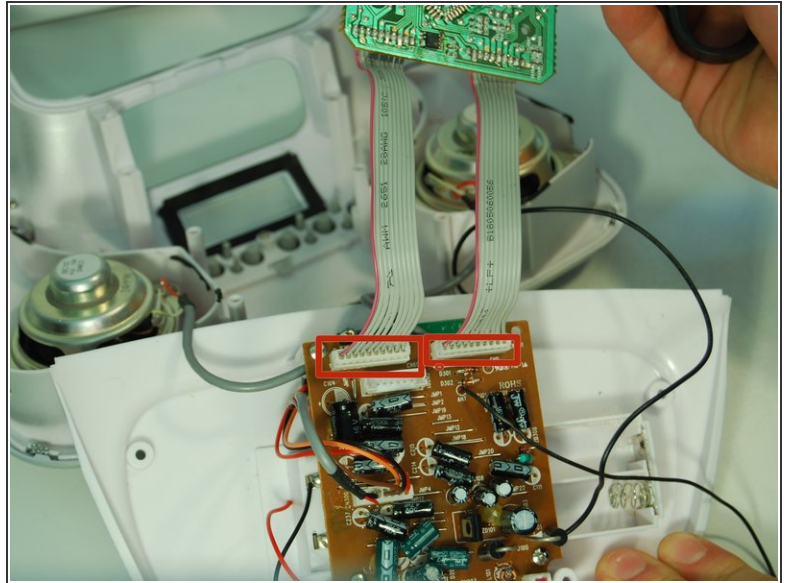
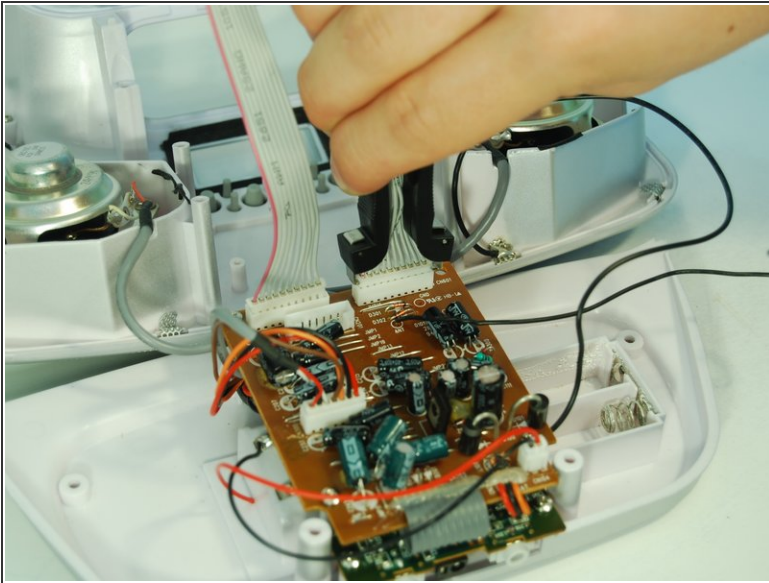


 Be careful when removing the daughterboard. There are still two wires connecting the display daughterboard to the radio motherboard which can be damaged or ripped if recklessly removed.

- Gently lift the display daughterboard straight up and remove it from the case.



## Step 23



- To finish, disconnect the two wires outlined in red rectangles that are connected to the motherboard using the IC extractor.
- Pinch the IC extractor just under the top lip of the wire housing and pull firmly out.

To reassemble your device, follow these instructions in reverse order.