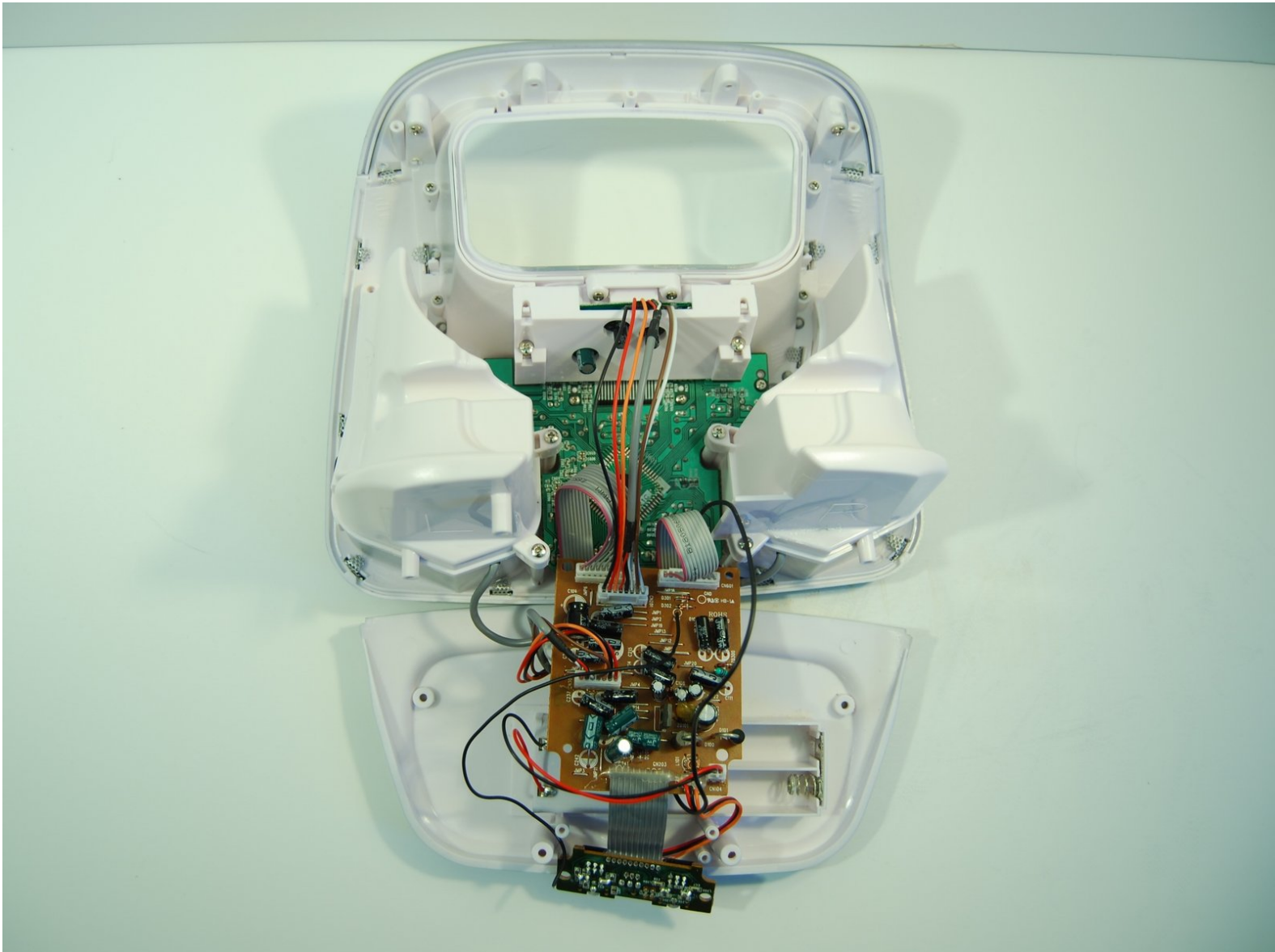




Memorex Mi3X Minimove Speakers Replacement

No sound from the audio speakers? Use this guide to replace unresponsive or broken speakers.

Written By: Alec Cheung



INTRODUCTION

The steps in this guide will instruct you on how to disassemble the boombox and remove the speakers. In the guide, we focus on removing the left speaker, but the instructions given are also applicable to the right speaker. Extensive disassembly and very basic soldering is required. The environment preferred is a clear worktable space.



TOOLS:

- [Phillips #1 Screwdriver](#) (1)
 - [IC Extractor/Connector Puller](#) (1)
 - [Phillips #00 Screwdriver](#) (1)
 - [iFixit Opening Tools](#) (1)
 - [Soldering Iron](#) (1)
-

Step 1 — Back Panel



- Remove the two plastic screw covers on the back of your Minimove by inserting the flat end of your plastic opening tool between the screw cover and the back panel and prying it out.

i It may be helpful to pull the plastic covers out with your fingers once the top of the cover has been revealed by using the plastic opening tool.

Step 2



- i** This step will require at least a 30 mm Phillips #1 screwdriver.
- Use a Phillips #1 screwdriver to remove the two 12 mm screws.

Step 3



- i** The bottom panel screws and screw covers must be removed in order to access the back panel.
- Remove the four grey screw covers by inserting the plastic opening tool underneath the screw covers and rotating around the circumference.
- ★ The adhesive on the screw covers should be sticky enough to put the covers back on when re-assembling the device.

Step 4



- Remove the two 8 mm screws with a Phillips #1 screwdriver.
- Remove the two 12 mm screws with a long Phillips #1 screwdriver.


Step 5



- To remove the back panel, use the plastic opening tool and gently work around the outline of the panel. The outline wraps around the sides and can be spotted at the top back of the device.

Step 6



 Be careful not to use too much force to remove the panel. The antenna wire is connected to the inside of the panel and may be damaged or ripped off if the panel is not gently removed.

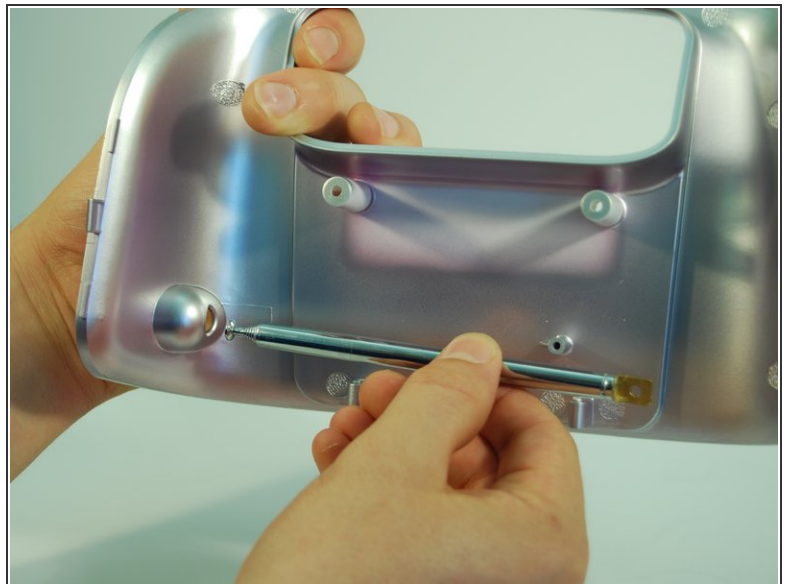
- After loosening the panel with the plastic opening tool, use moderate force to pry open the panel with your hands.
- **Carefully pull the panel off.**

Step 7



- Use a Phillips #1 screwdriver to detach the wire from the back panel by removing the 8 mm screw connecting the wire to the antenna.

Step 8



- If desired, the antenna can now be removed by pulling **inwards** and horizontal to the panel bottom.

Step 9



- Use the Phillips #1 screwdriver to remove the four 12 mm screws.
- Remove the five 6 mm screws at the top with the same screwdriver.

Step 10



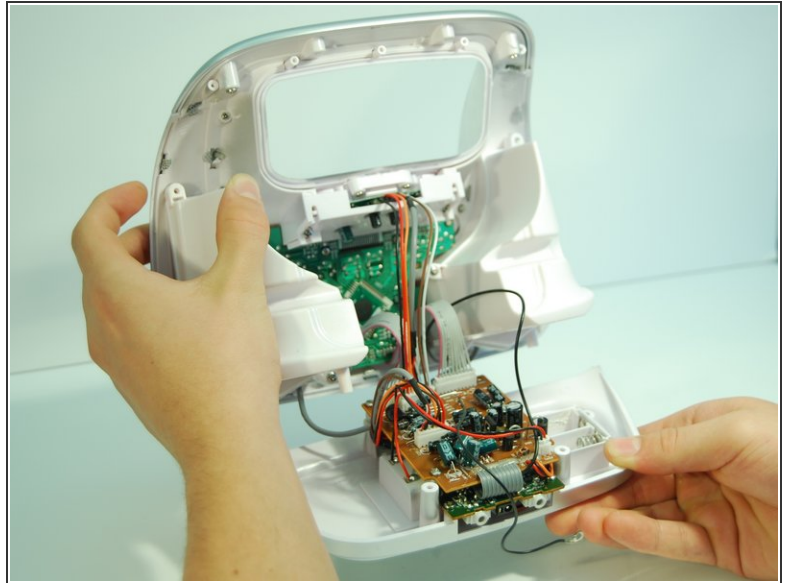
- Use a Phillips #1 screwdriver and remove the two vertical 8 mm screws from the top.


Step 11



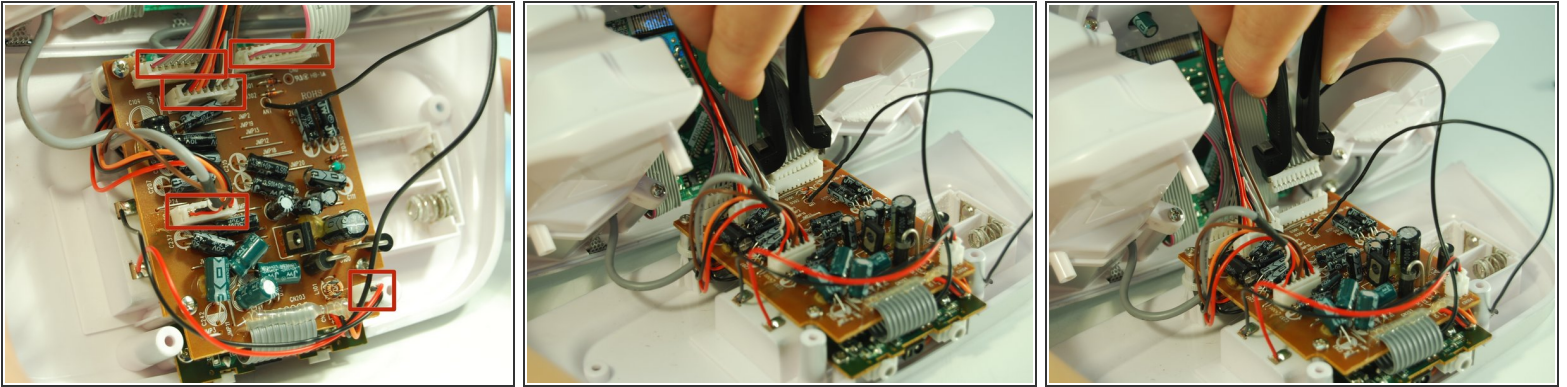
- Pry open the inner back panel by inserting the plastic opening tool in the crack at the top corner.
- Use moderate force to pry it open and take the cover off.

Step 12 — Radio



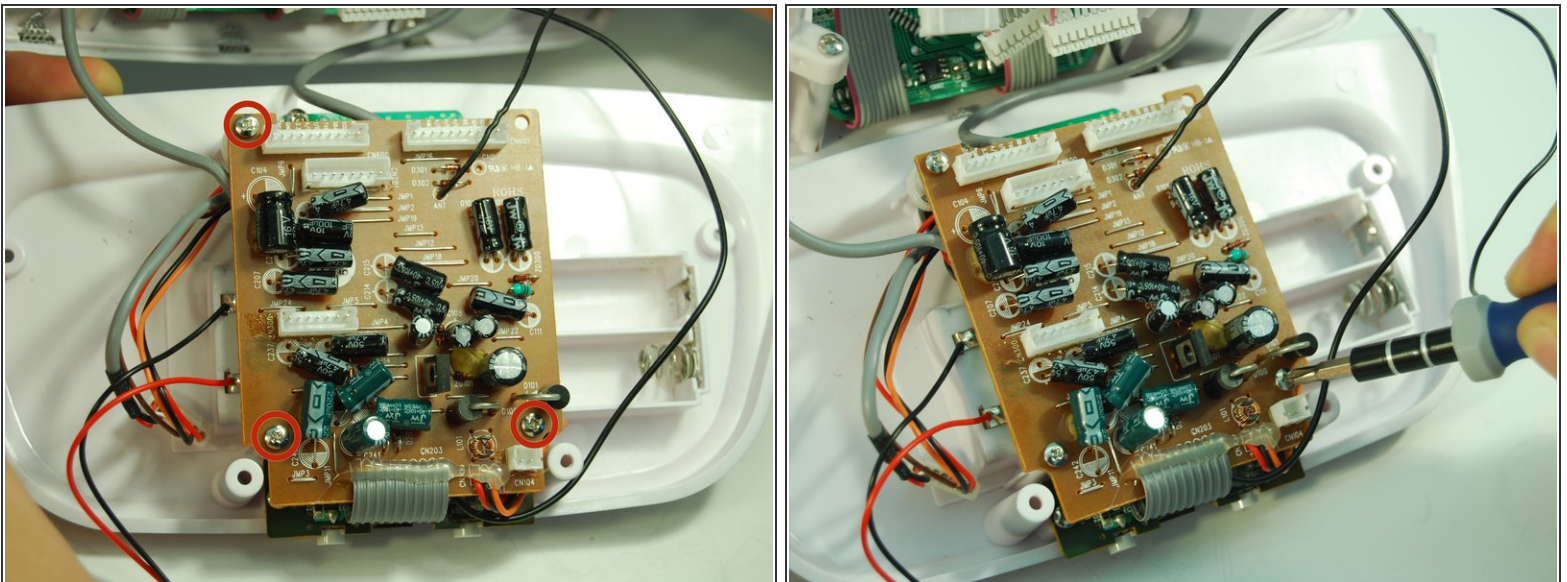
-  A plastic sheet is in between the radio motherboard (the upper brown board) and the audio port daughterboard (the lower green board) coming from the right speaker housing. Be careful when removing the back panel as to not damage the boards.
- Remove the bottom panel of the boombox by carefully pulling the panel straight backwards from the boombox until the boards are free.

Step 13



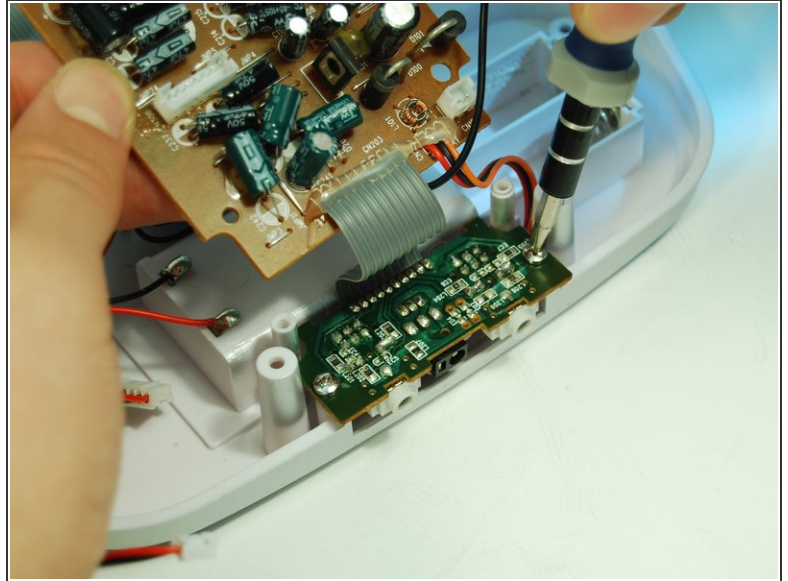
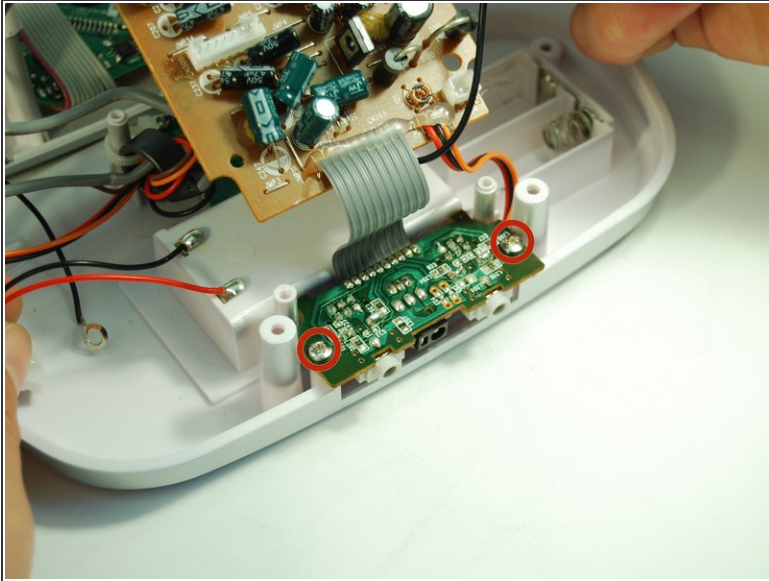
- Pull out the 5 white pinhead connectors using an IC (Integrated Circuit) extractor. Pinch the IC extractor just under the top lip of the wire housing. There are two 10 pin connectors, one 8 pin connector, one 7 pin connector, and one 2 pin connector.
- ☞ When reassembling, there is only one way to reinsert the pinhead connectors. Make sure the orientation matches that of the receiving connector on the motherboard.

Step 14



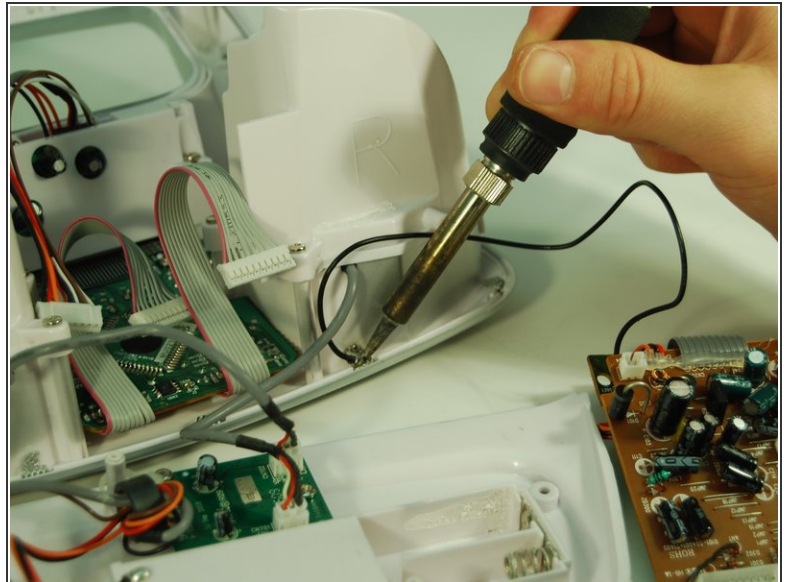
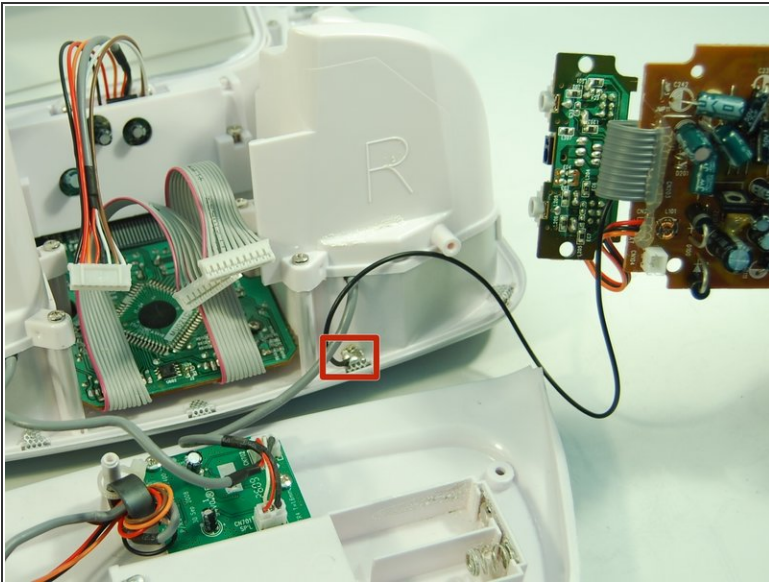
- Use the Phillips #1 screwdriver to remove the three 8 mm screws holding the motherboard in place.

Step 15



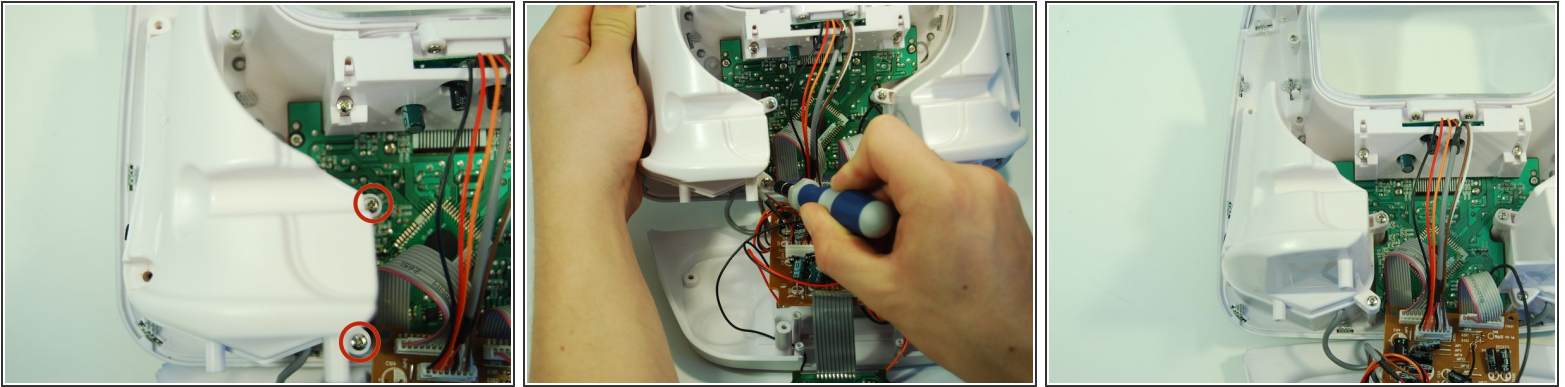
- Detach the smaller green audio port daughterboard by removing the two 8 mm screws with a Phillips #1 screwdriver.

Step 16



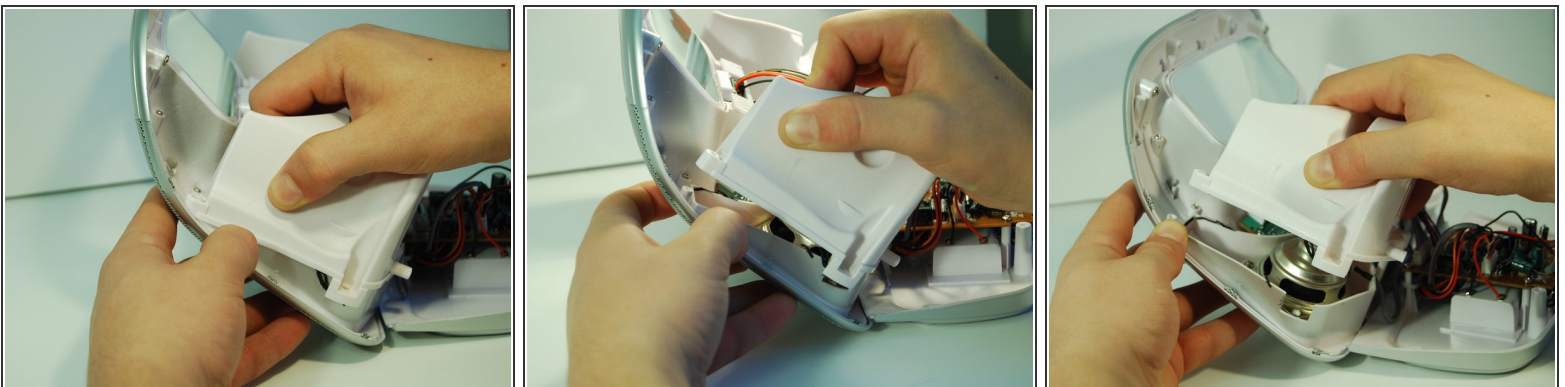
- Detach the black ground wire by desoldering it from the inner case.
- Visit the soldering [guide](#) for help with desoldering.

Step 17 — Speakers



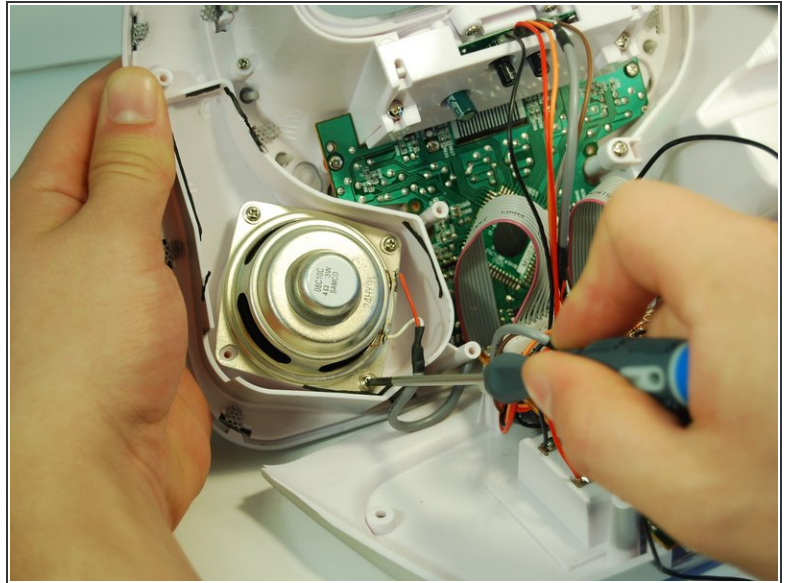
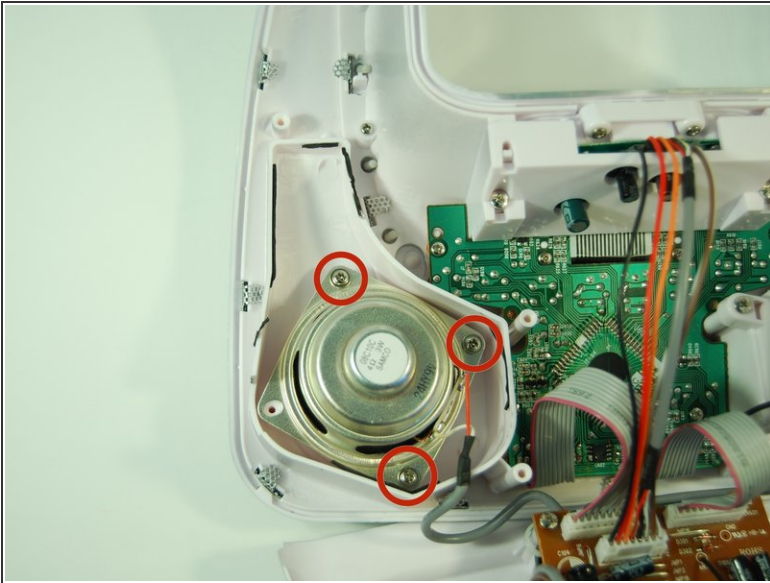
- Use a Phillips #1 screwdriver to unscrew the two 8 mm screws on the speaker housing.

Step 18



- ⓘ The speaker housing may require more force than expected to remove because it is held together by a thin black rubber adhesive. Do not be afraid of using more force if you are unable to remove it on the first try.
- ⓘ When the housing is removed the rubber adhesive will come off. This should not effect your device's functionality in any way.
- Grab the outside of one speaker housing and pull outwards (starting with the top) while holding the main casing still with your other hand.

Step 19



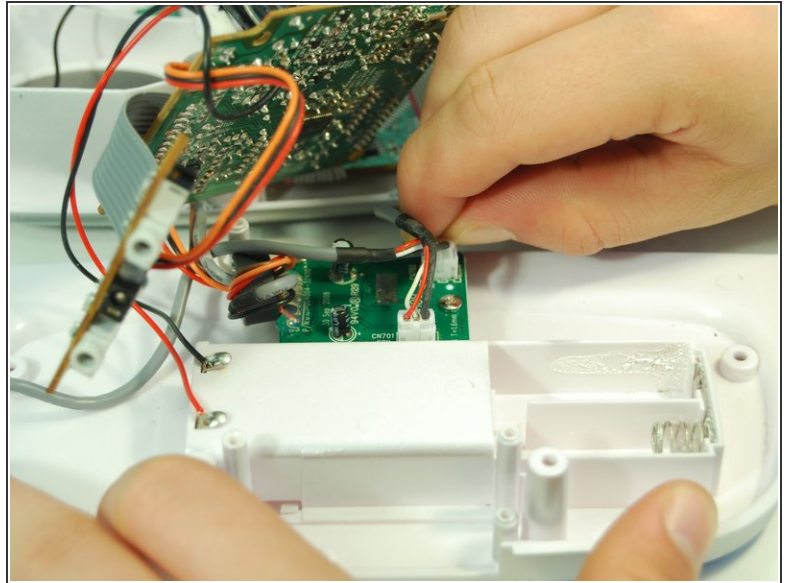
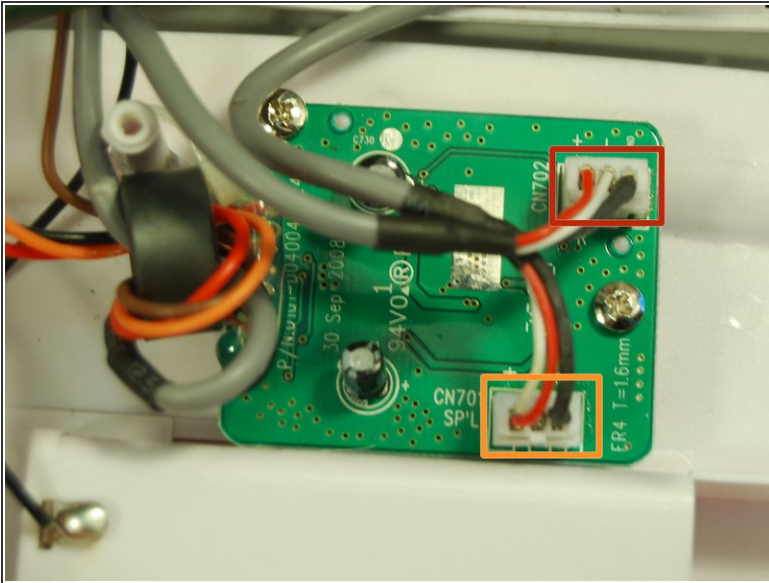
- Unscrew the three 8 mm circled screws that are holding the speaker to the plastic casing.

Step 20



- ⚠ The speaker is still attached to the speaker board in the boombox. Do not attempt to move the speaker too far away from the boombox.
- Remove the speaker from the housing and place it next to the boombox.

Step 21



- ⓘ The upper wire connector, marked in red, connects the left speaker to the boombox. The lower wire connector, marked in orange, connects the right speaker to boombox.
- ⚠ Do not remove the wire connector from the speaker daughter board by pulling on the wire. This may damage the wire and the board.
- Use your hands to grip the plastic wire housing and detach the upper speaker wire connector from the speaker daughterboard.

To reassemble your device, follow these instructions in reverse order.