



Mercedes W115 Headlamp Bulb Replacement

Replace the bulb in your Mercedes W115 Headlamp

Written By: Chaga Edirisinghe



INTRODUCTION

It's a very common issue that newer vehicles' headlamps are brighter than the old timers'. This guide will help you update your bulb.




TOOLS:

- [Phillips #2 Screwdriver](#) (1)
-

Step 1 — Headlamp Bulb



- Locate the bottom screw which holds the metal frame around the lamp and unscrew it. Because there are no other screws to hold it, gently lift the frame upwards to unlock the pin on the top.

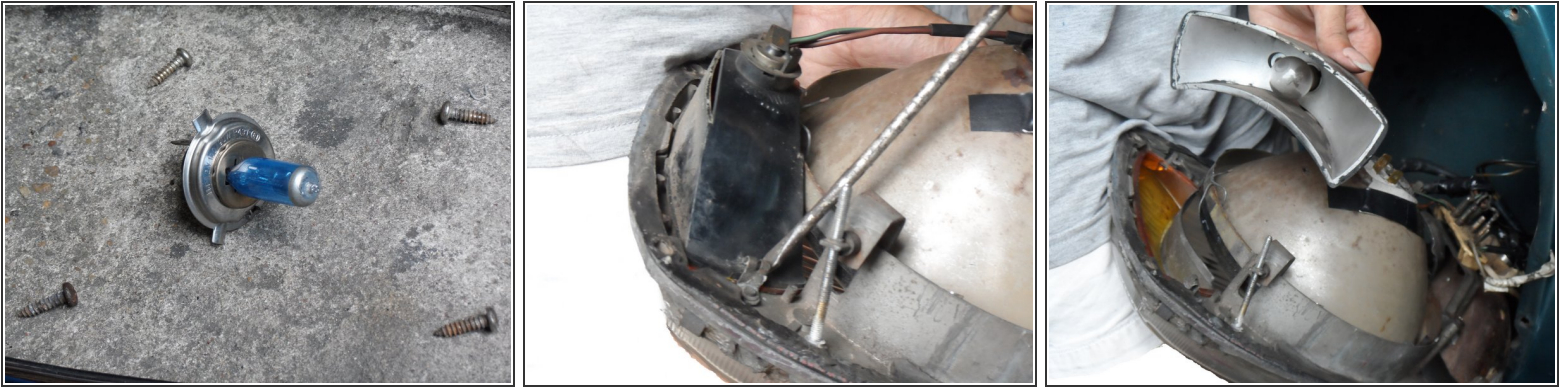
 Be very careful when unhooking the four small metal clips because they can easily break (if you break more than two clips, the front glass will become loose and water could enter and fade the inner surface of the lamp). After removing the glass carefully, place it aside and remember to clean all of the surfaces before reassembling.

Step 2




- Carefully unplug the headlamp socket, and then rotate the metal ring, which holds the bulb to the body. Then, pull the bulb out slowly.

Step 3




- Remove the old/blown bulb and replace with a new one.

 You can also replace the signal lamp at the same time by simply unlocking the small clips by rotating them with a screwdriver. Be careful as you handle these clips because breaking one clip will cause your signal lamp to become loose and out of position.

Step 4



- After replacing the new bulb, follow the reverse order of disassembly. Before you fix the metal frame, align your headlamp beam.
 - To do so, locate the screws on the headlamp cover body, which are covered with a plastic frame. The outer-side screw aligns the fog lamp and the inner-side screw aligns the headlamp. Start your car, turn on the fog lamps, and align them; then, turn off the fog lamps and align the headlamps.
-  It's essential to have a 20m distance ahead to adjust the light beams. Keep your car running so that it will not drain your battery if the engine is not functioning.

To reassemble your device, follow these instructions in reverse order.