

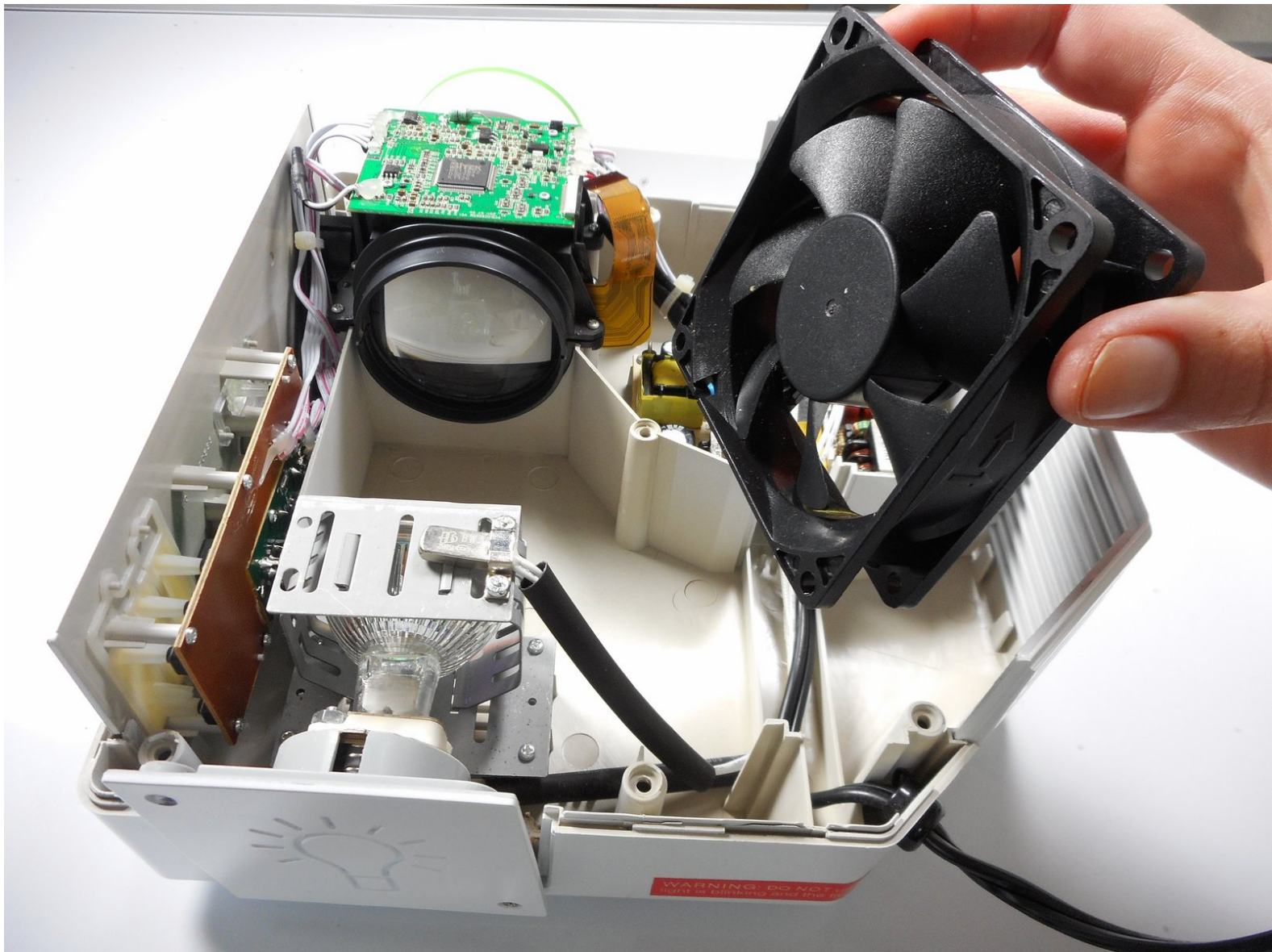


# Merch Source Projector Entertainment II

## Cooling Fan Replacement

This guide will guide you how to disassemble the Merch Source Projector Entertainment II and replace the cooling fan.

Written By: Stephanie



## INTRODUCTION

Is your projector overheating? Is it powering down at random times? Use this guide to replace the malfunctioning fan. Replacing the fan requires a fine tip soldering iron and should be done by those with solder experience.

---

### TOOLS:

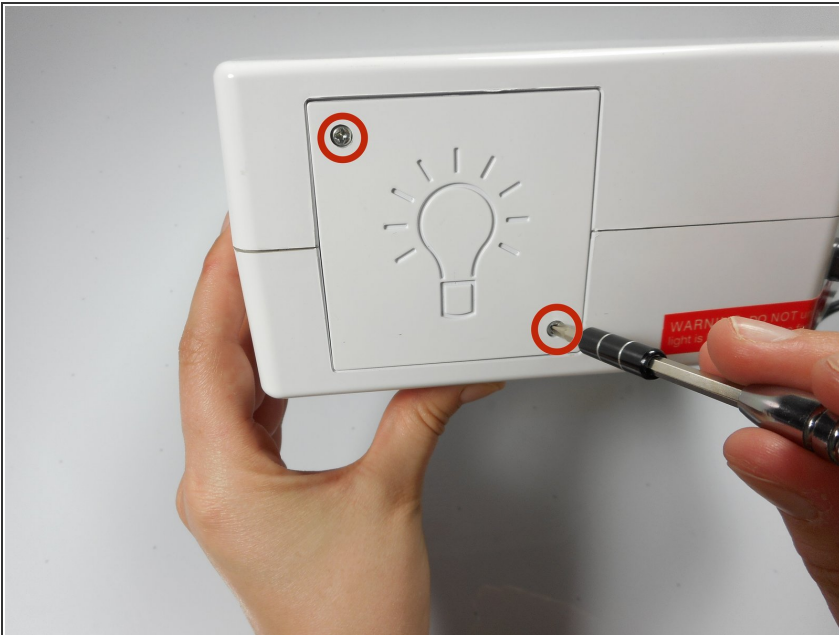
- [Phillips #0 Screwdriver](#) (1)
  - [Portable Soldering Iron](#) (1)
-

## Step 1 — Outer Casing



- Flip the projector onto its back and unscrew the nine 15mm screws using the Phillips #0 screw driver.

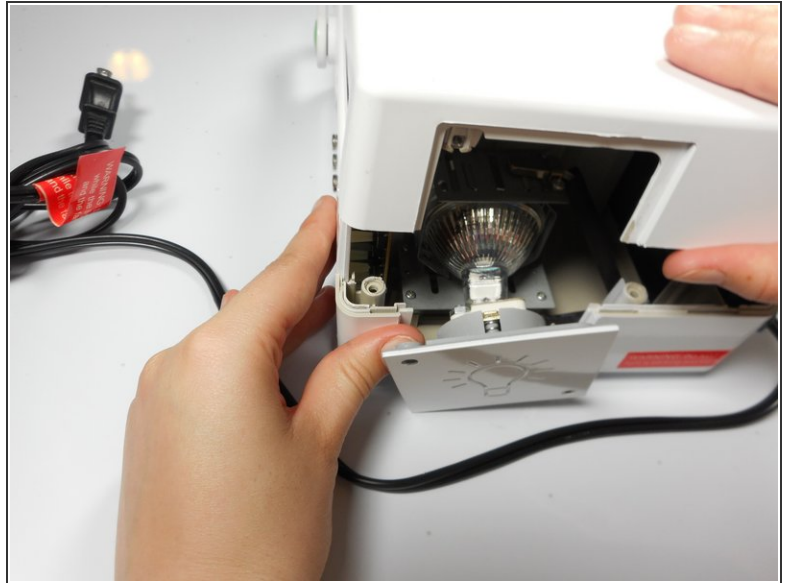
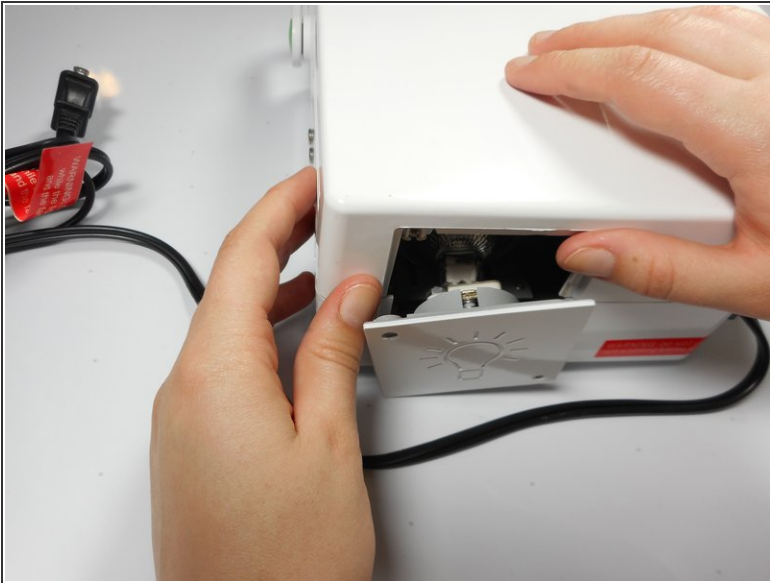
## Step 2



- Flip the projector right side up and unscrew the two 12mm screws on the light bulb panel located at the rear of the projector with a Phillips #0 screw head.
- ⓘ The bottom right panel screw does not come completely out the panel door.

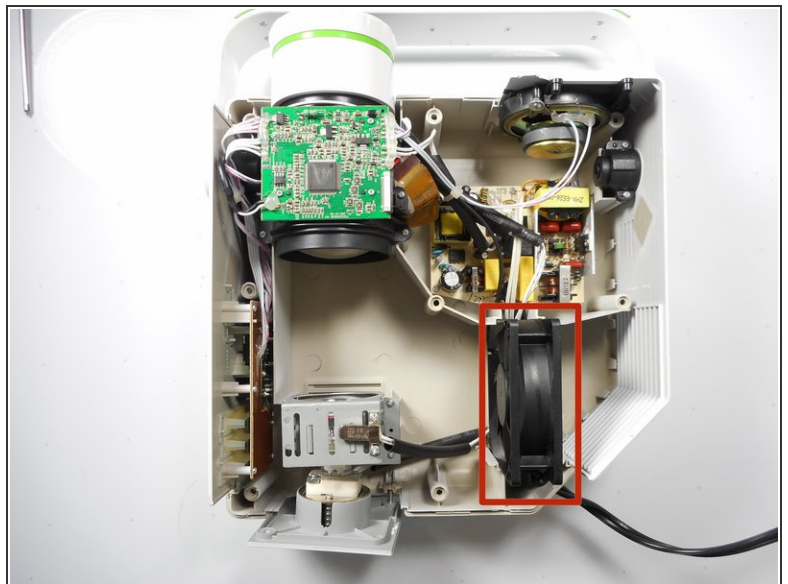
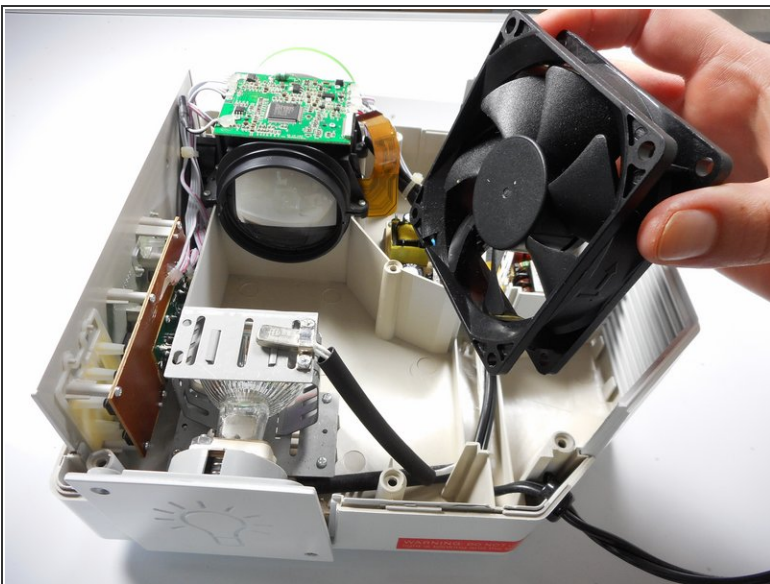


### Step 3



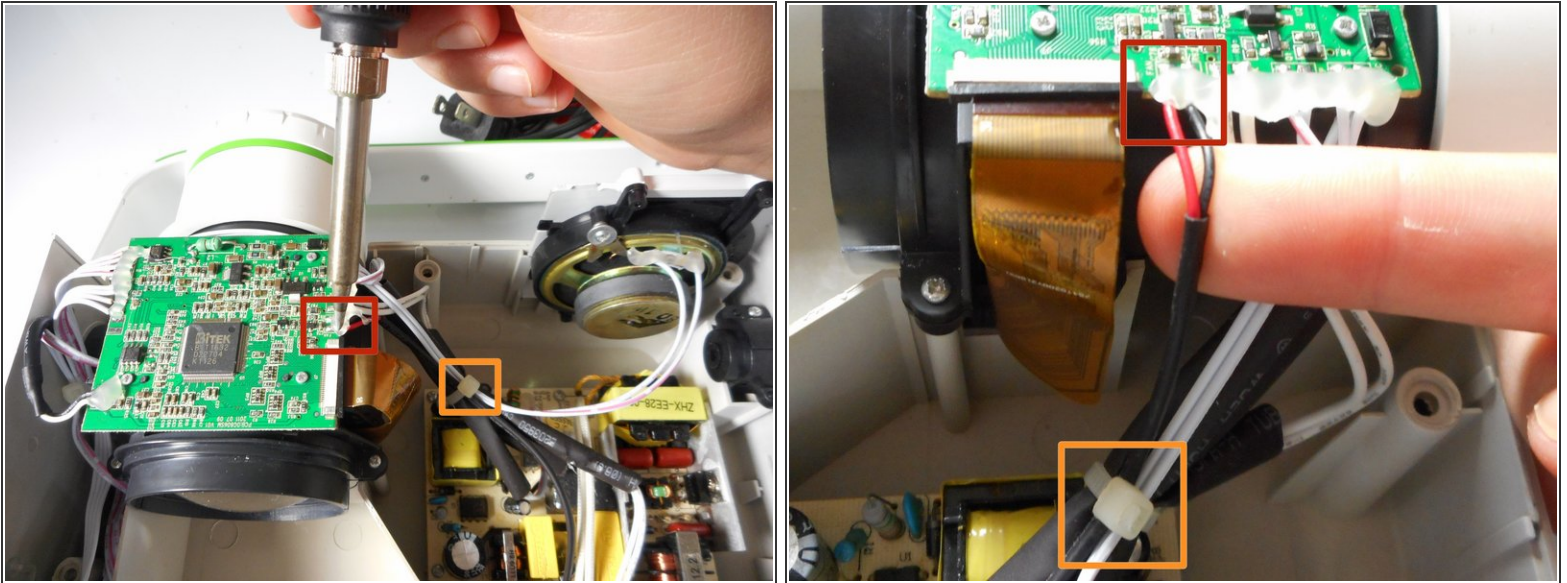
- Using your hands, gently pry the top and bottom of the projector casing apart.

### Step 4 — Cooling Fan



- Locate the 80 mm fan and slide upward straight out of the housing.

## Step 5



- Unsolder the red and black connections off of the motherboard.
- If there are zip ties around the cables, they will need to be cut to remove the fan.
- ⓘ Need some help? Follow this [guide](#) to learn soldering basics.
- ⚠ While soldering the metal connections will get very hot. Never touch the iron with your hand.
- ⚠ Make sure that the projector is fully turned off and not plugged in. Allow up to 30 minutes for projector to cool down.
- ⓘ If there is hot glue within the connection in on the motherboard, you will need to peel it off simply using your fingers.

To reassemble your device, follow these instructions in reverse order.