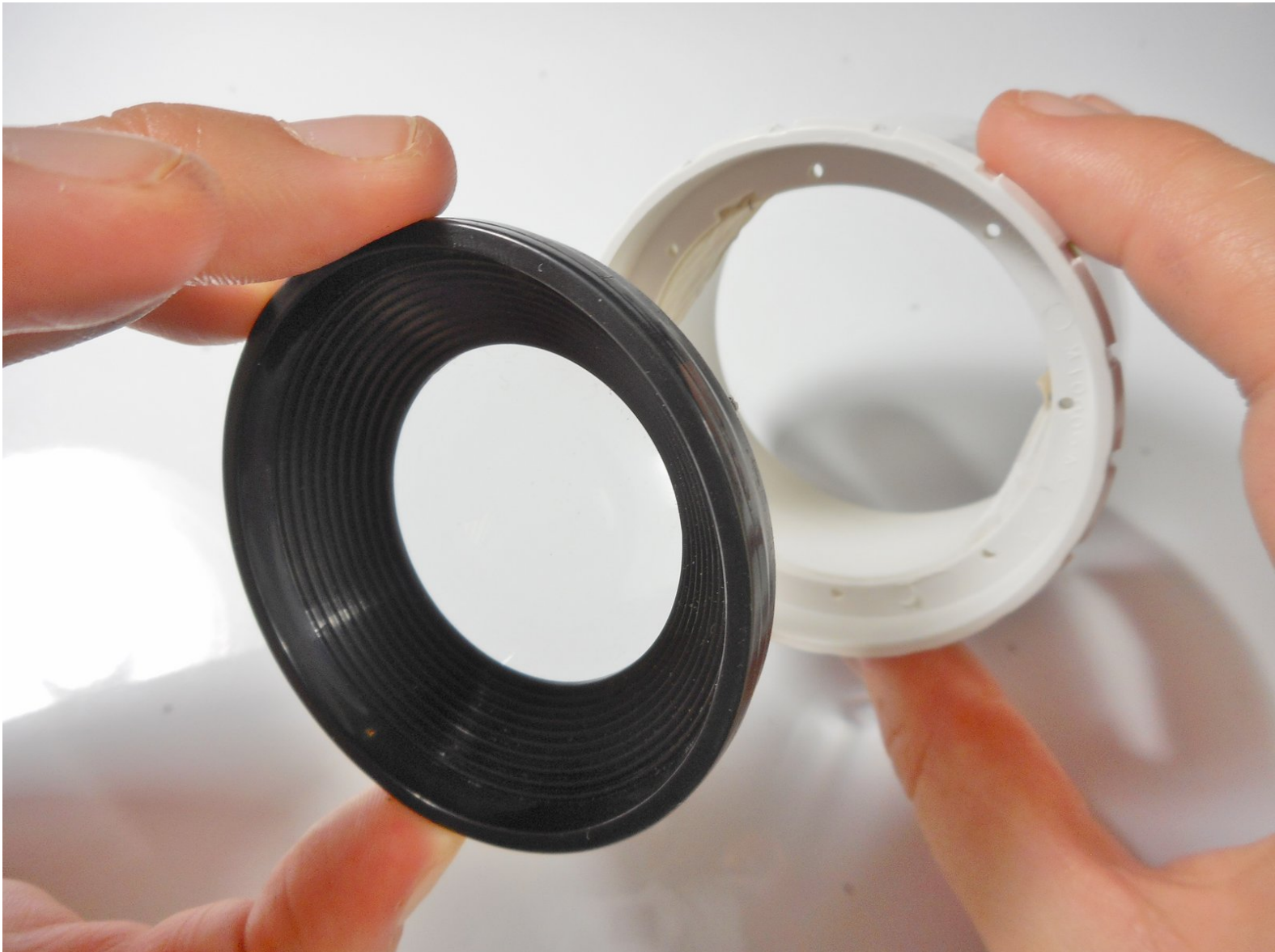




Merch Source Projector Entertainment II Outer Lens Replacement

This guide will show you how to replace a broken outer lens for your Merch Source Projector.

Written By: Stephanie



INTRODUCTION

Do you have a blurry image or a broken outer lens? Follow these step by step instructions to learn how to disassemble the projector and remove the outer lens for your repairs.



TOOLS:

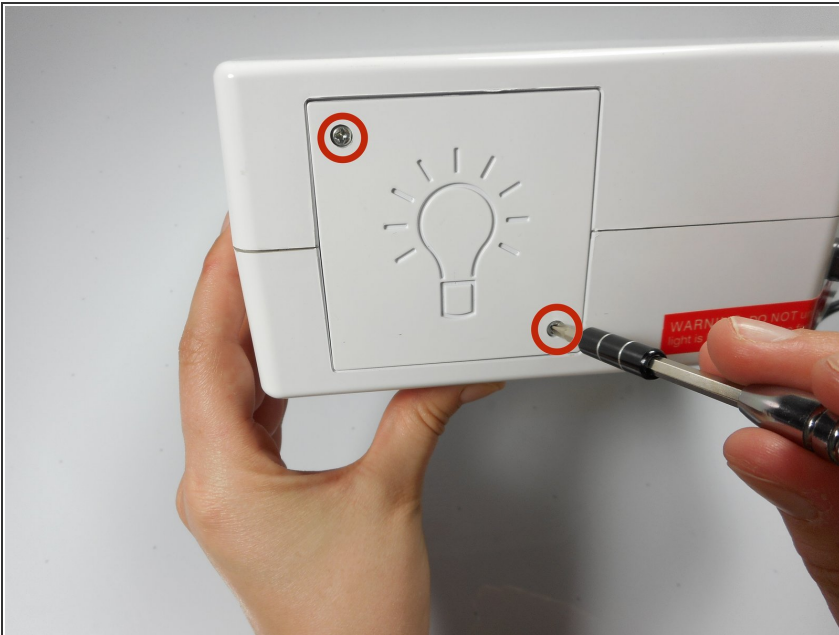
- [Phillips #0 Screwdriver](#) (1)
 - [Spudger](#) (1)
-

Step 1 — Outer Casing



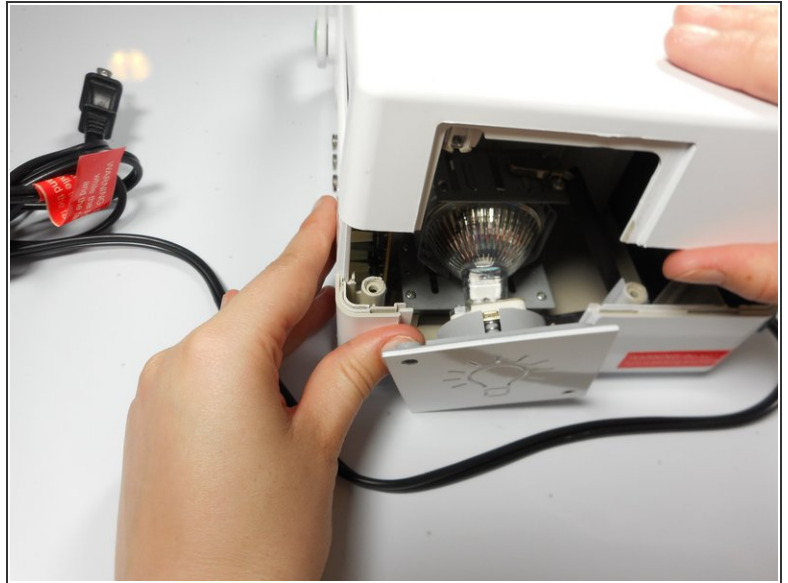
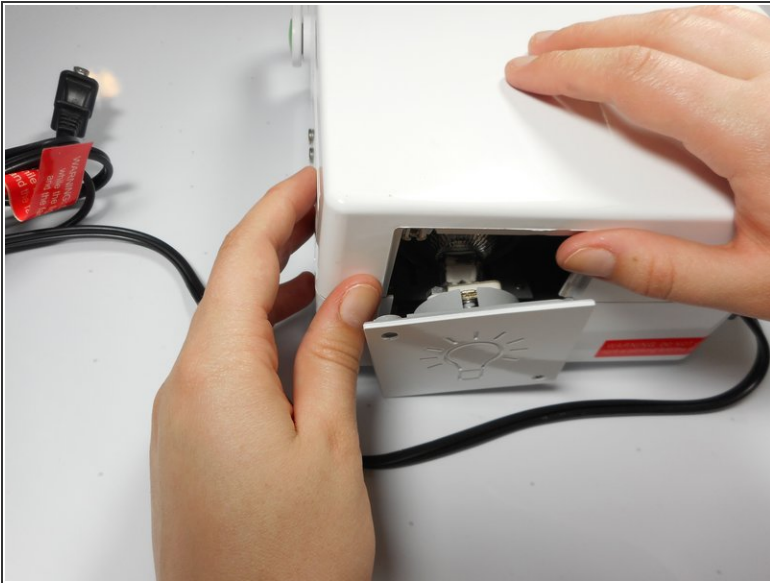
- Flip the projector onto its back and unscrew the nine 15mm screws using the Phillips #0 screw driver.

Step 2



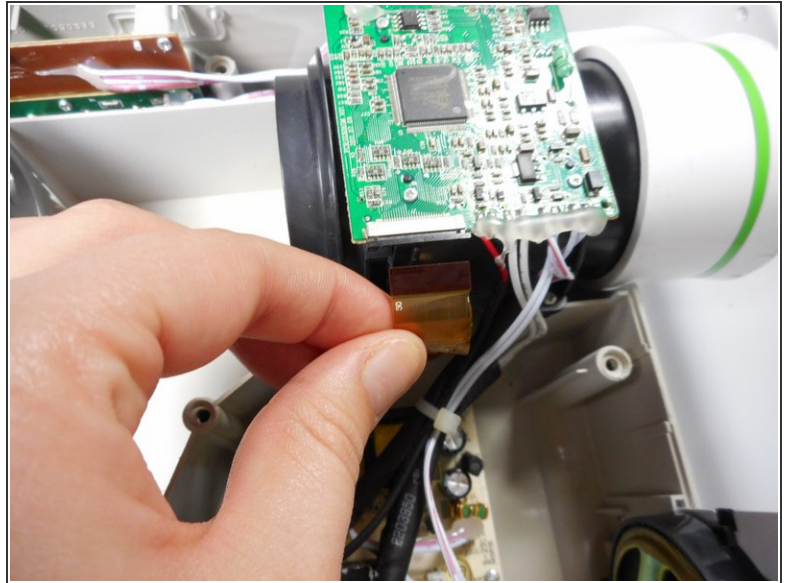
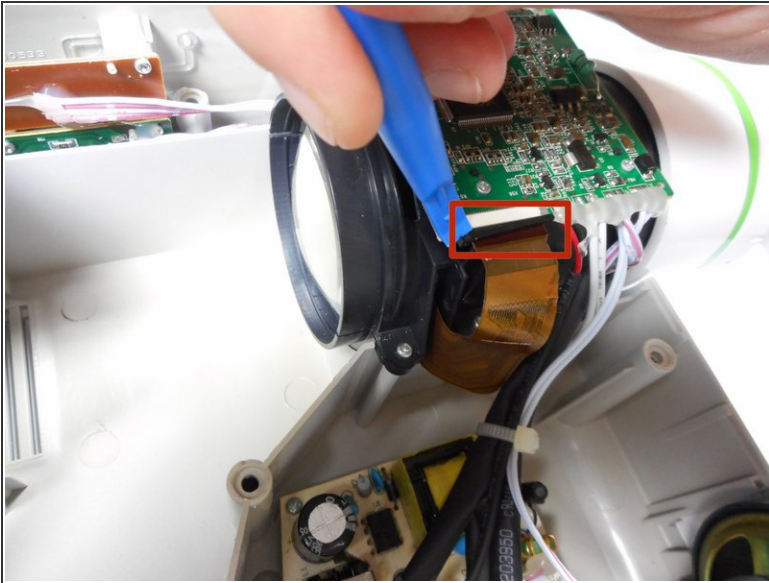
- Flip the projector right side up and unscrew the two 12mm screws on the light bulb panel located at the rear of the projector with a Phillips #0 screw head.
- ⓘ The bottom right panel screw does not come completely out the panel door.

Step 3



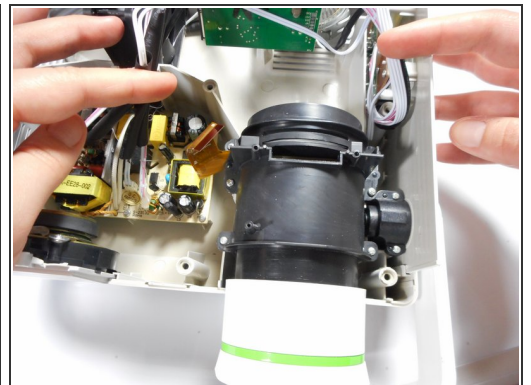
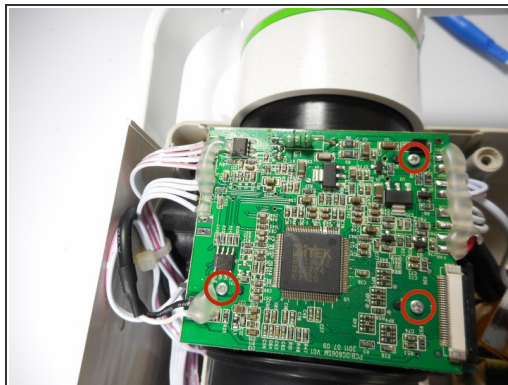
- Using your hands, gently pry the top and bottom of the projector casing apart.

Step 4 — Ribbon Cable Detachment



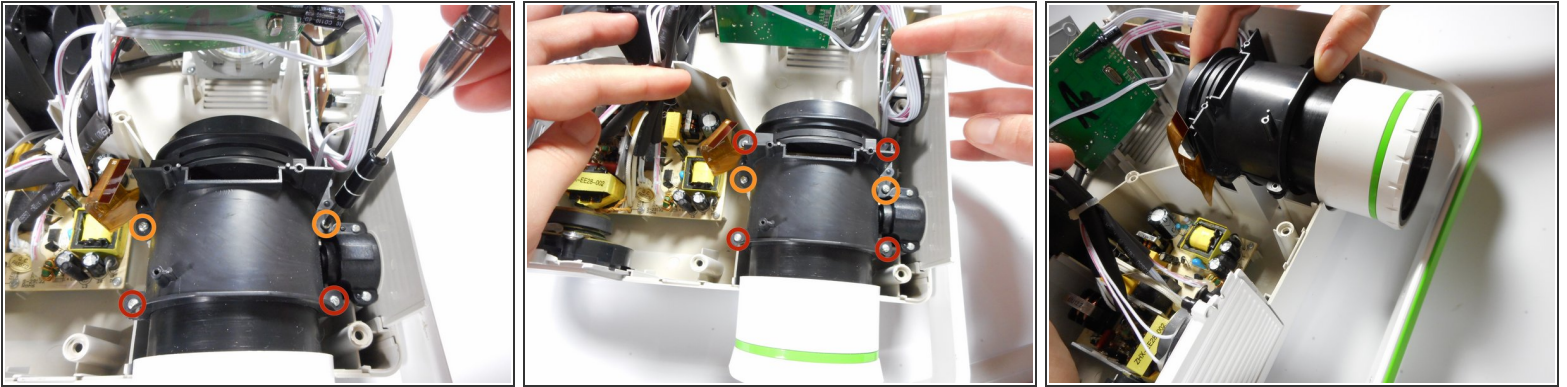
- Use the plastic opening tool to gently disengage the black clip housing from the ribbon cable.
 - Once the ribbon cable is disengaged gently pull the cable off the motherboard.
- ⚠ Once the housing is disengaged, the ribbon cable should slide out easily. Do not pull too hard on the ribbon cable as it is very fragile.

Step 5 — Motherboard Detachment



- Unscrew the three 7 mm screws from the motherboard with the Phillips #0 screw driver.
 - Once loose, lift the motherboard off of the lens casing, and move it away from the workspace.
- ⚠ Be sure not to damage any of the wires attached to the motherboard.

Step 6 — Lens Casing Detachment





- Unscrew the four 15mm Phillips screws using the Phillips #0 screw driver.
- Unscrew the two 12mm Phillips screws using the Phillips #0 screw driver.
- Gently remove the entire lens casing from it's position.

Step 7 — Lens Casing Separation

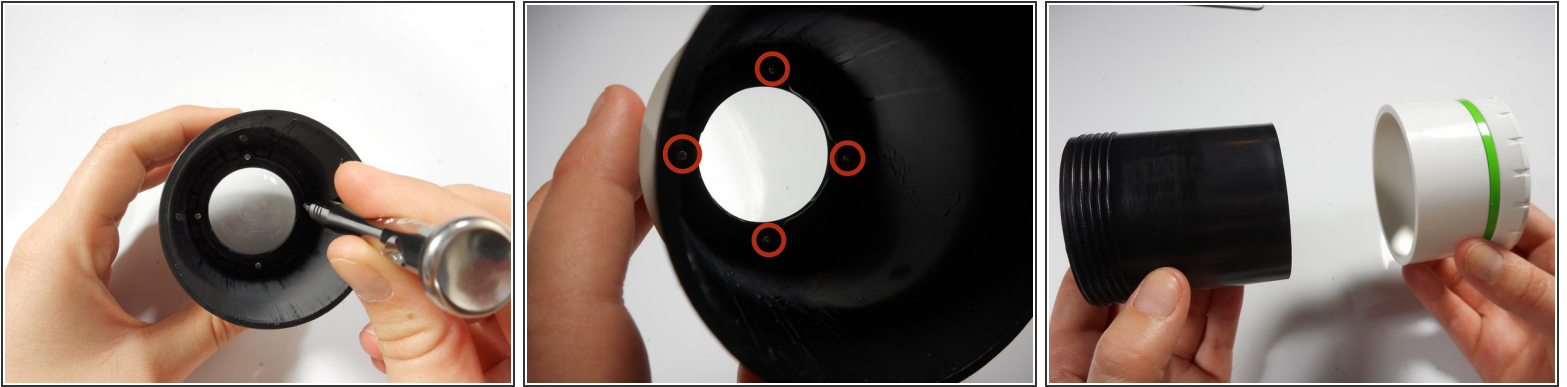


- Using the plastic opening tool, slightly separate the casing holding the large lens in place.
- Separate the casing completely from the inner lens using your hands.
- This should release the outer lens and it's immediate casing.

 As you separate the outer casing, the lens and digital display box may fall out of their encasement.

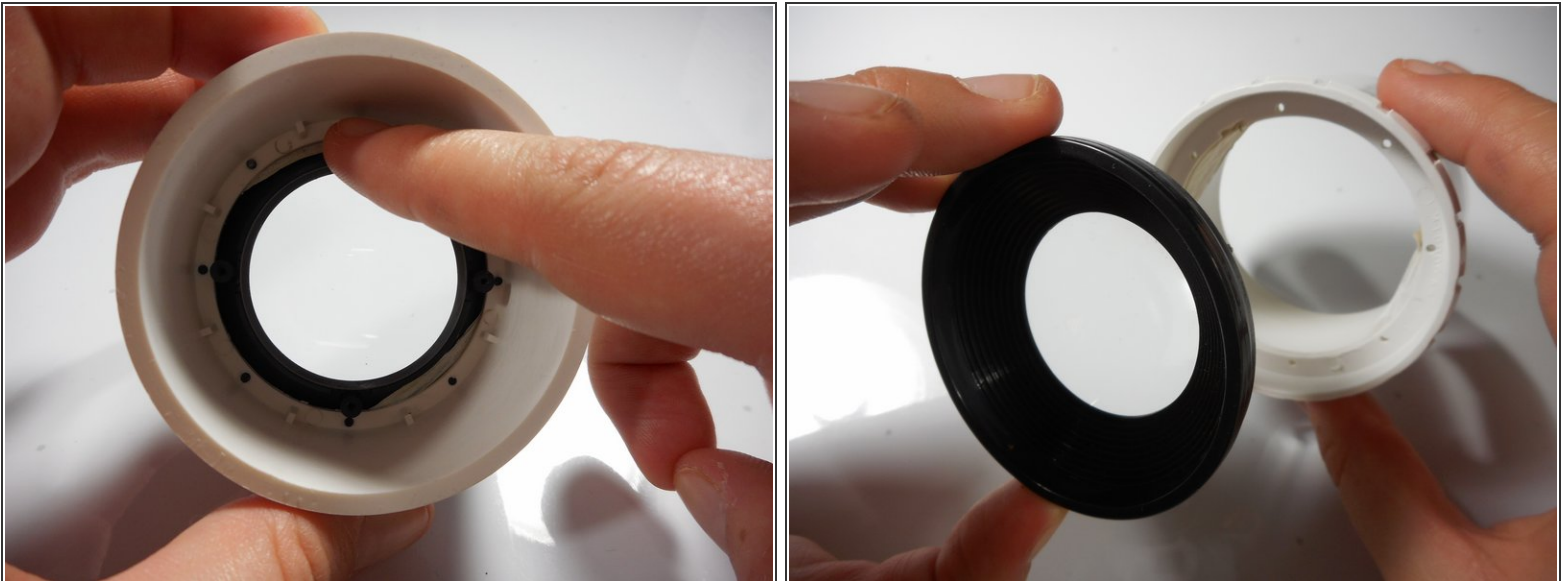
 Although there are threads connecting the outer lens casing and the inner lens casing, do not be fooled. The outer lens casing cannot be disconnected by unscrewing it.

Step 8 — Outer Lens Casing Separation



- Unscrew the four 8mm Phillips screws at the base of the outer lens casing using the Phillips #0 screw driver.
- Separate the white outer casing from the black outer casing.

Step 9 — Final Outer Lens Removal



- Using your finger, gently push the lens out of its white encasement.
- The outer lens is now free and ready for replacement.

To reassemble your device, follow these instructions in reverse order.