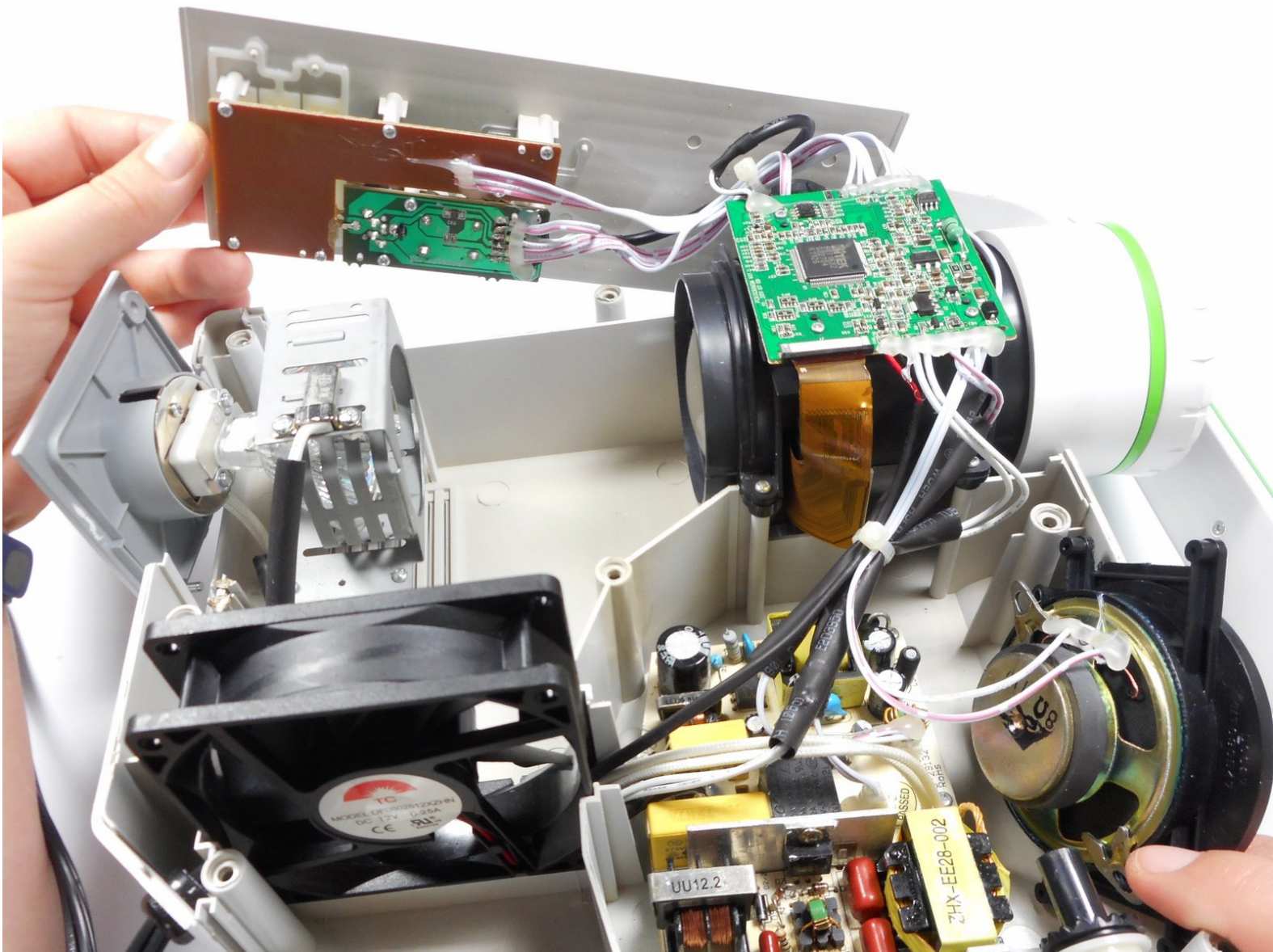




# Merch Source Projector Entertainment II Speaker Replacement

Use this guide to replace a worn or blown out speaker in your Merch Source Projector Entertainment II.

Written By: Michael Tan



This document was generated on 2019-09-21 01:36:38 PM (MST).

# INTRODUCTION

Muffled sound? Distorted sound? No sound? No problem! Simply use this guide to regain awesome audio in your projector. To follow this guide, you should have the following parts handy:



## TOOLS:

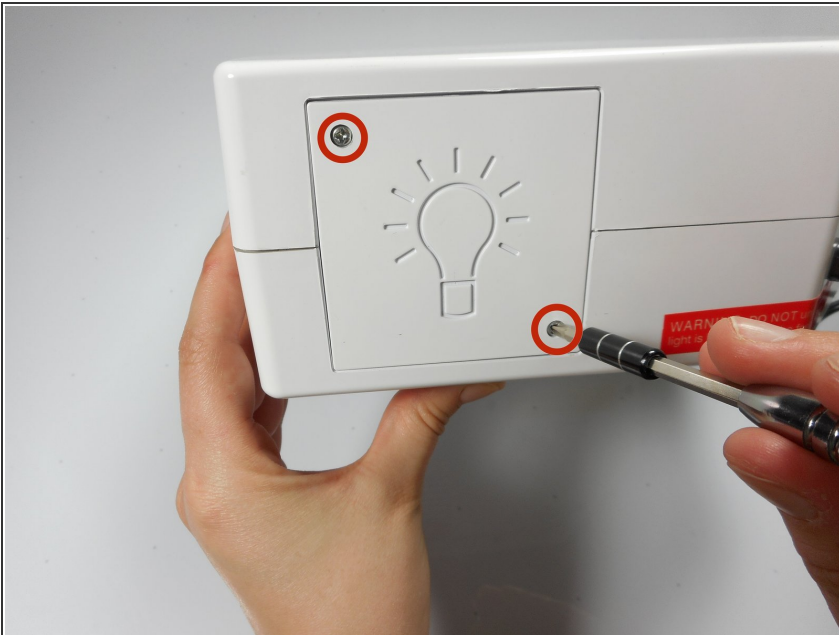
- [64 Bit Driver Kit](#) (1)
  - [Portable Soldering Iron](#) (1)
-

## Step 1 — Outer Casing



- Flip the projector onto its back and unscrew the nine 15mm screws using the Phillips #0 screw driver.

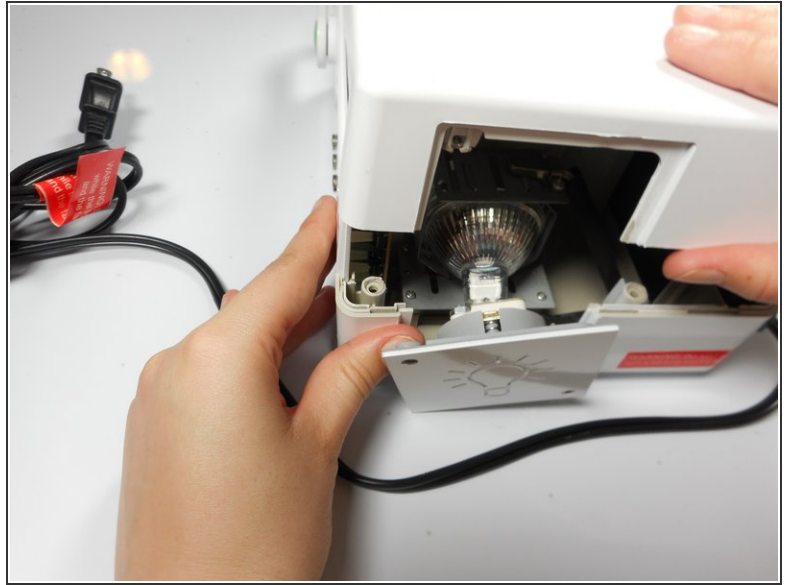
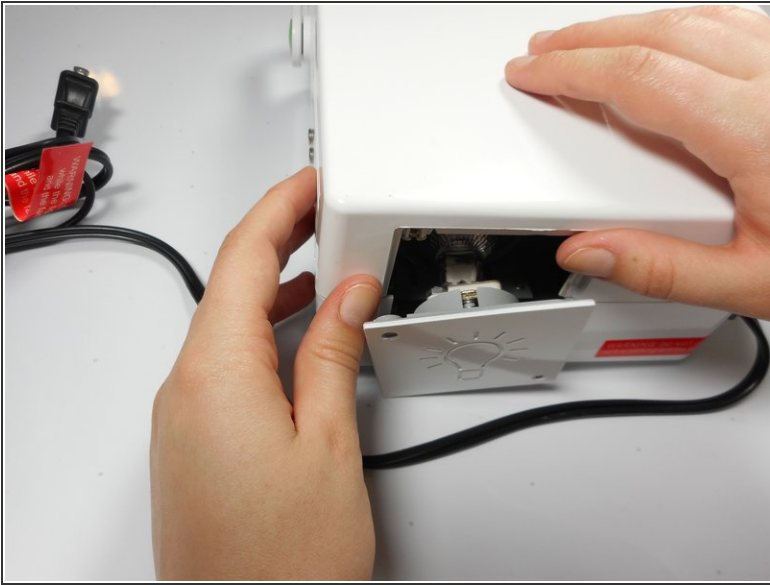
## Step 2



- Flip the projector right side up and unscrew the two 12mm screws on the light bulb panel located at the rear of the projector with a Phillips #0 screw head.

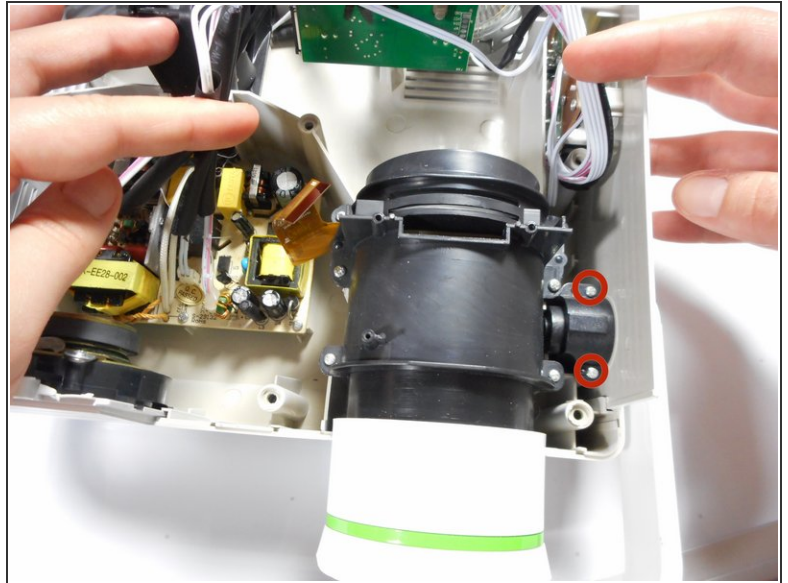
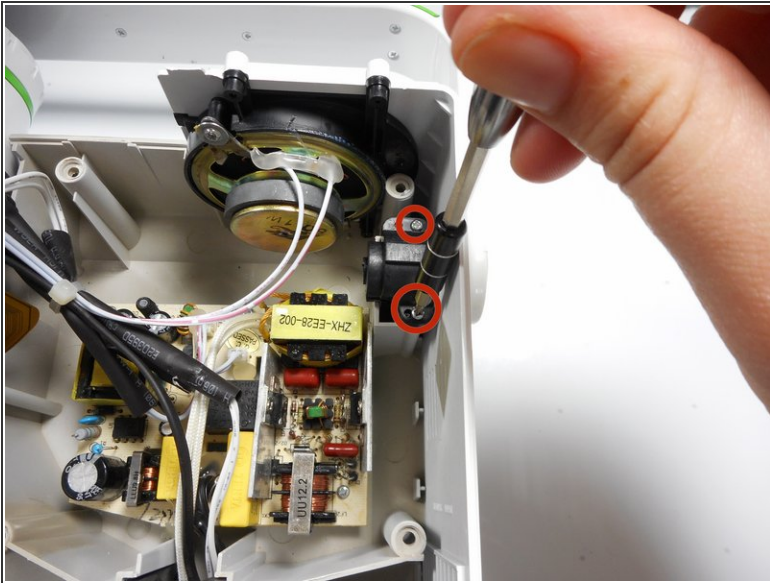
**i** The bottom right panel screw does not come completely out the panel door.

## Step 3



- Using your hands, gently pry the top and bottom of the projector casing apart.

## Step 4 — Speaker



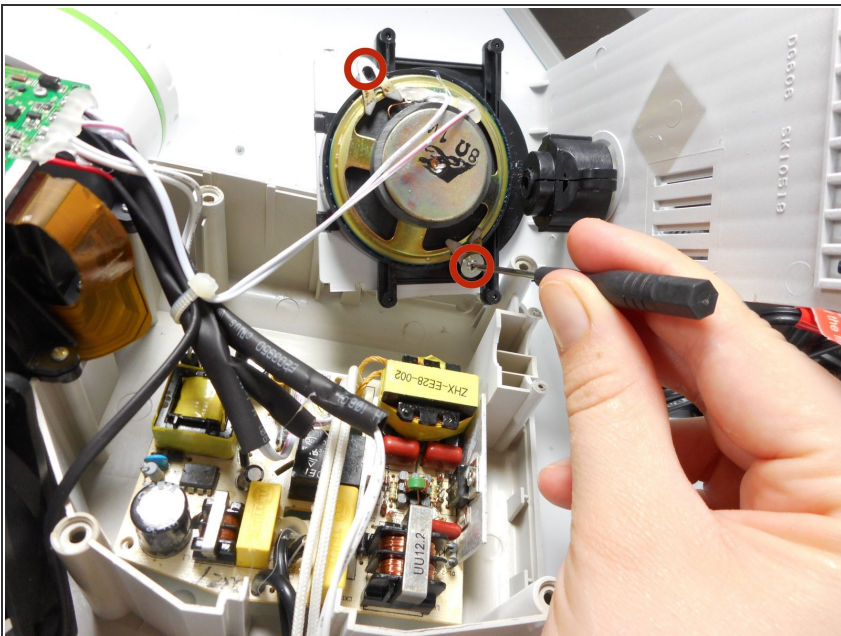
- Locate the 2 screws on the handle casing. These screws are mirrored on the handle attachment on the other side panel as well.
- Unscrew the two 16mm screws using the Phillips #0 screw driver. Repeat for the opposite side panel.
- ⓘ You do not need to remove the motherboard to reach the screws next to the lens. This is only done to show the screws more clearly.

## Step 5



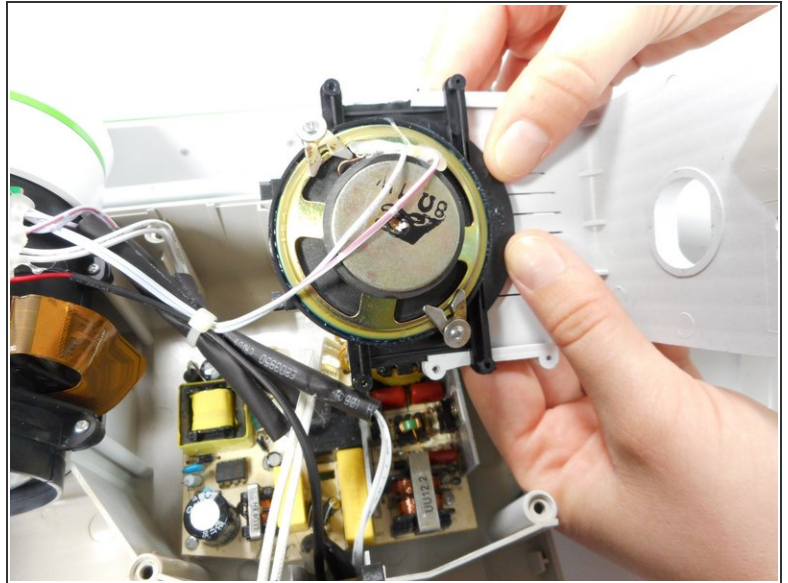
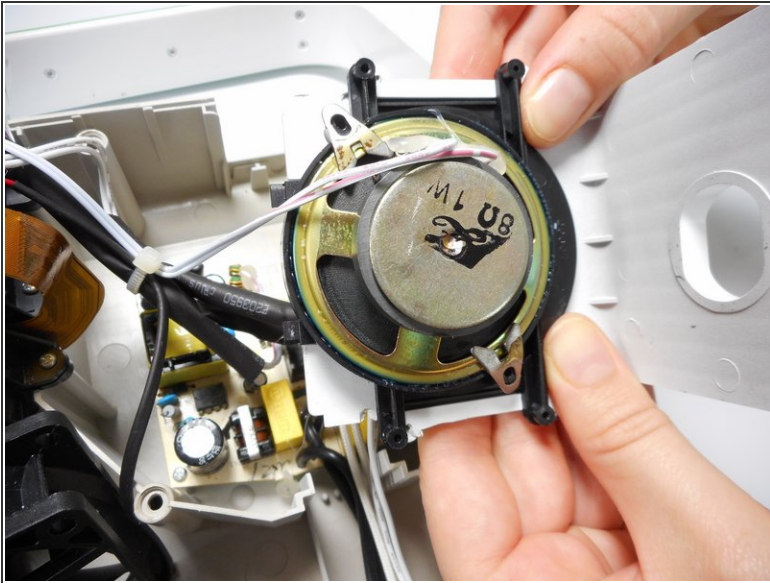
- Lift up on the side panel and speaker attachment to slightly dislodge it.
- Unscrew the four 9mm Phillips screws with a Phillips #0 screw driver, located on the outside of the projector casing.

## Step 6



- Once the side panel door has been lifted out of the bottom casing, it can swing freely.
- Rotate the side panel door forward so that you can access the screws on the speaker.
- Unscrew the two 10mm screws with a Phillips #0 screw driver.

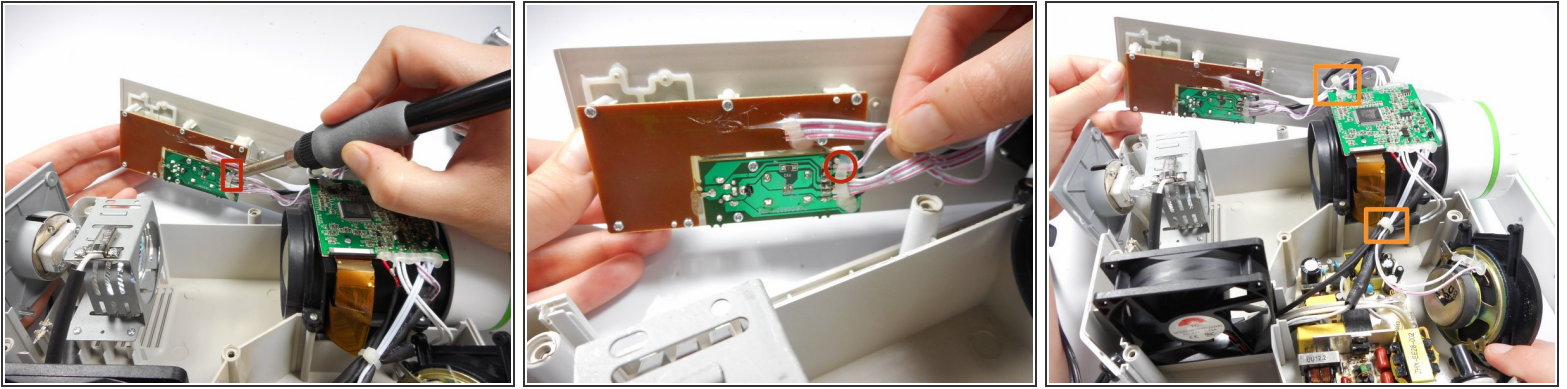
## Step 7



- Lift the side panel and speaker out from the projector casing.
- Using your hands, slide the speaker outward from the side panel.

⚠ While detaching the speaker, do not damage the wires.

## Step 8



- Locate the two speaker wires connected to the sound and audio motherboard on the left panel opposite of the speaker. Unsolder these connections with a soldering iron.
  - Once the wires are disconnected, in order to fully remove the speaker you may need to cut the plastic bands holding the speaker wires in place.
- i** Need some help? Follow this [guide](#) to learn soldering basics.
- i** To get to the connections on the motherboard, you will need to peel off the hot glue covering them.
- !** While unsoldering, the metal connections can get very hot. Never touch the iron with your hand. Also, make sure that the projector is fully turned off and not plugged in.

To reassemble your device, follow these instructions in reverse order.