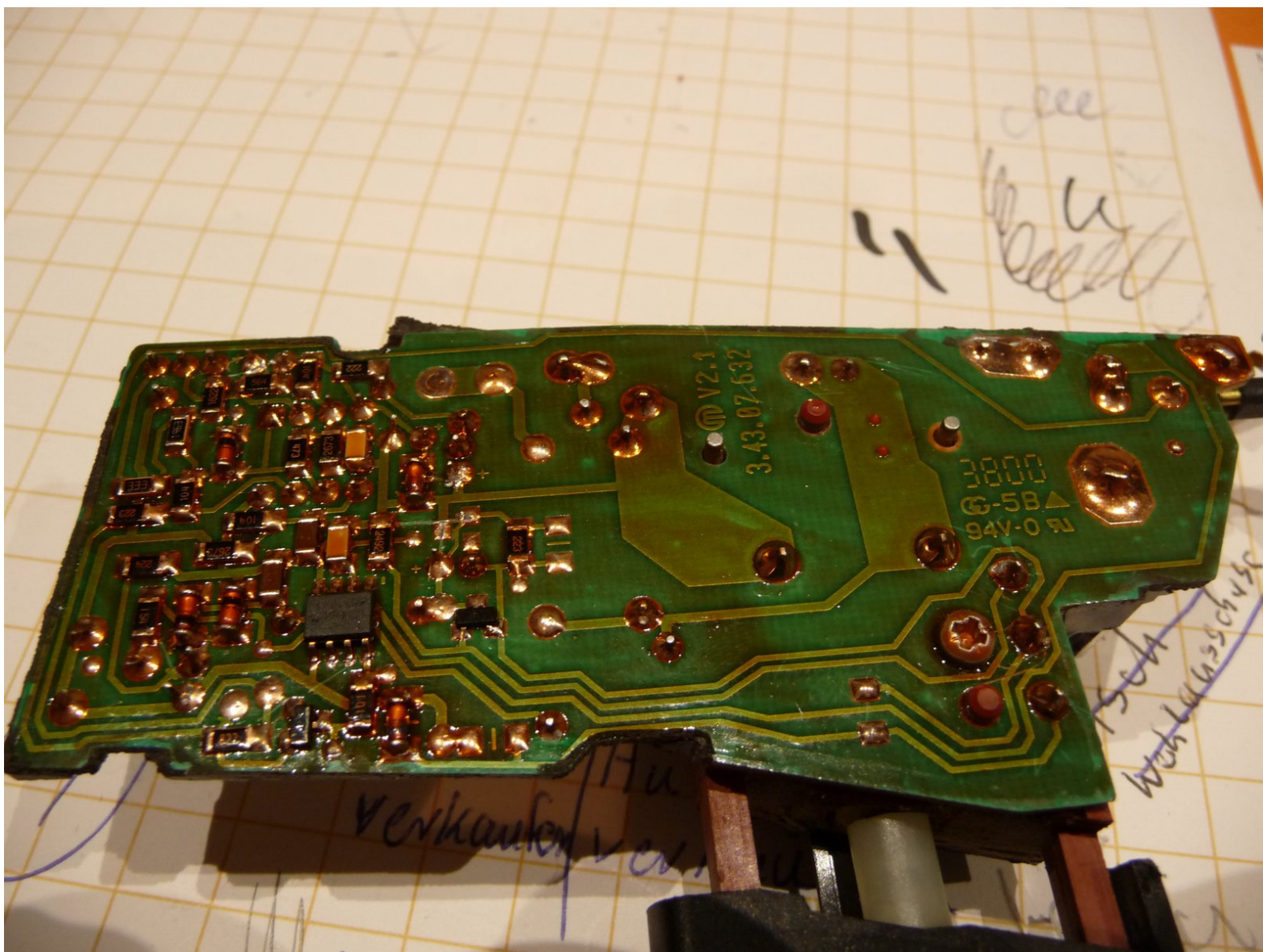




Metabo drill repair electronics

Repair of the power electronics in the Metabo drilling machine (SB E 800/2 S-R + L Impuls).

Written By: Moxel



INTRODUCTION

With the Metabo drilling machine (SB E 800/2 S-R + L Impuls) it can happen that the speed and power are only very low. Here is the power electronics responsible, which can be easily repaired.



TOOLS:

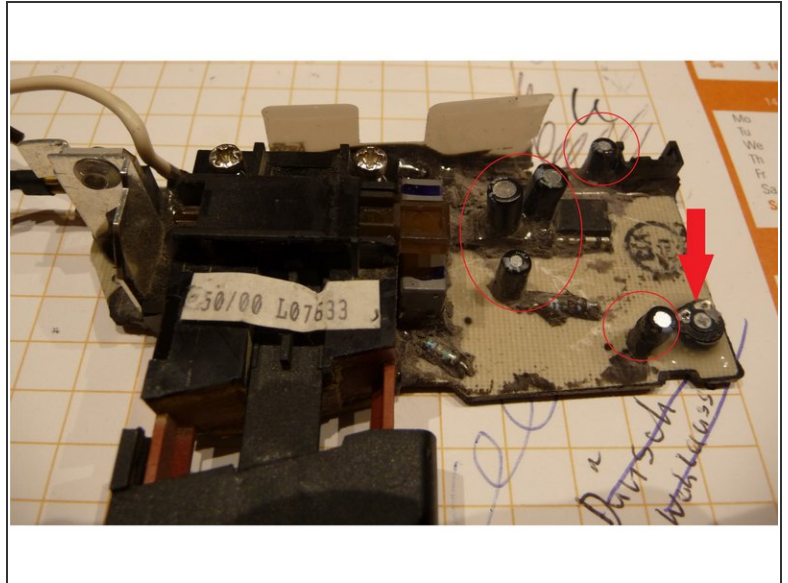
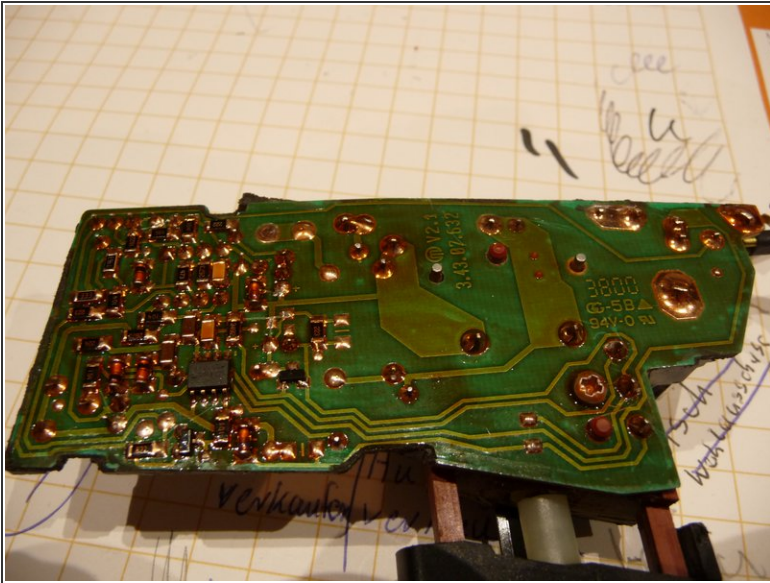
- [screwdriver according to the screws used / passender Schraubenzieher](#) (1)



PARTS:

- [evtl. Elkos](#) (1)
- [New Item](#) (1)

Step 1 — Metabo drill repair electronics



- Carefully remove the potting compound using a small scalpel or a small sharp screwdriver. If it has changed significantly due to aging (eg over 250 kOhm), replace it with a new or a fixed resistor (try it). Electrolytic capacitors are usually still in order.
- If it has changed significantly due to aging (eg over 250 kOhm), replace it with a new or a fixed resistor (try it). Electrolytic capacitors are usually still in order.
- Check the adjustment pot for the correct resistance value (for example 100 kOhm). If it has changed significantly due to aging (eg over 250 kOhm), replace it with a new or a fixed resistor (try it). Electrolytic capacitors are usually still in order.

Repeat the steps in order to reassemble your device.