



Mi-T-M Pressure Washer CM1400HDEC1 GCFI Power Cord Replacement

This guide will show you how to replace the power cord of a Mi-T-M CM1400HDEC1 2017 electric pressure washer.

Written By: Taylor Dixon



INTRODUCTION

Follow this guide to replace the power cord of a Mi-T-M CM1400HDEC1 2017 electric pressure washer.

This guide requires you to work around a large capacitor. Don't attempt to remove the insulated wires from the capacitor unless you have the tools necessary to [discharge it](#).



TOOLS:

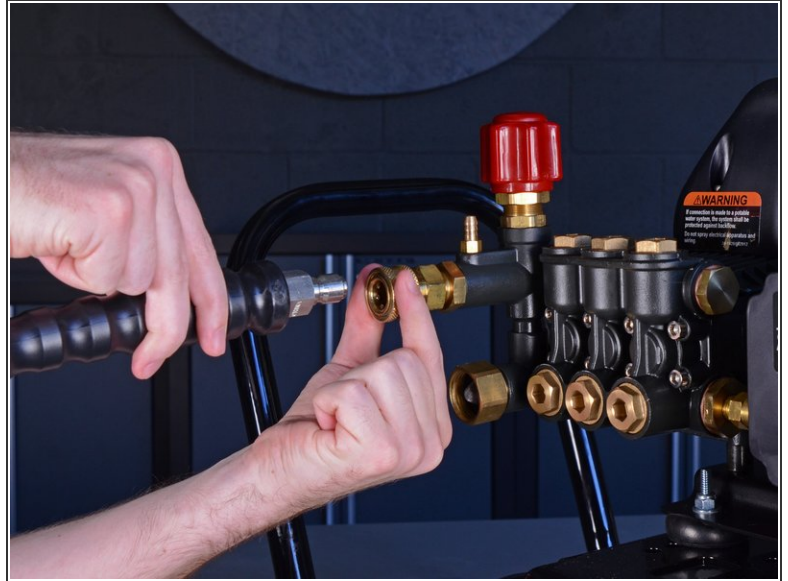
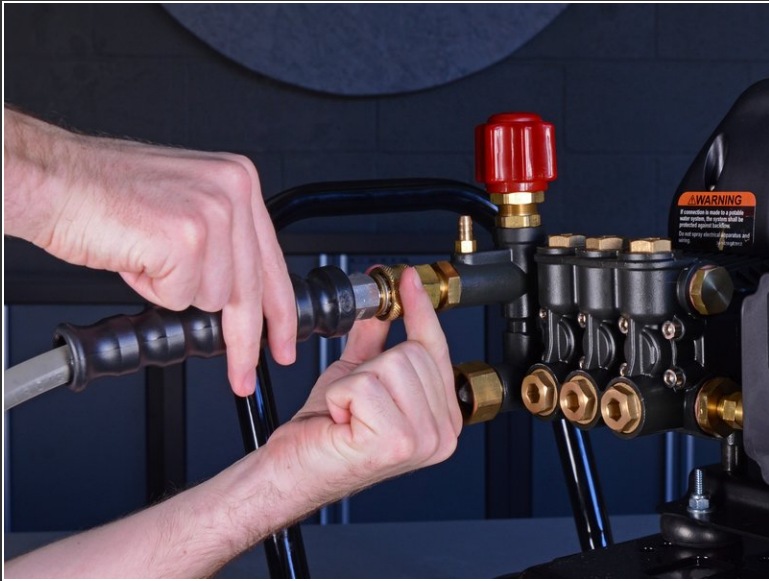
- [4 mm Hex Key](#) (1)
- [Wire stripper/crimping tool](#) (1)
- [Phillips #1 Screwdriver](#) (1)
- [Phillips #2 Screwdriver](#) (1)
- [Large Needle Nose Pliers](#) (1)
- [Flush Wire Cutters](#) (1)



PARTS:

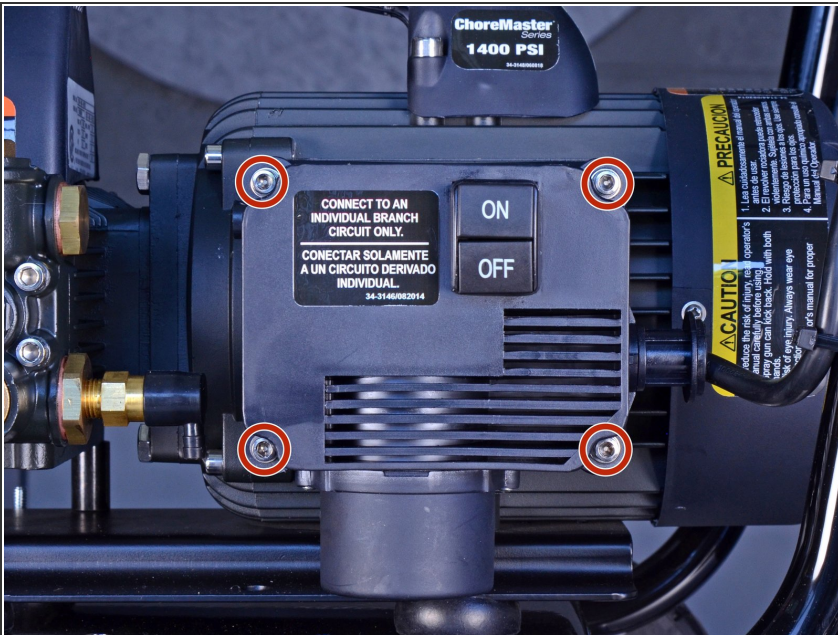
- [Zip Ties](#) (1)
- [Mi-T-M Cord Gfci 15 Amp 32-0268](#) (1)
- [Insulated quick disconnect wire ends](#) (1)

Step 1 — Disconnect all hoses and unplug the power cord



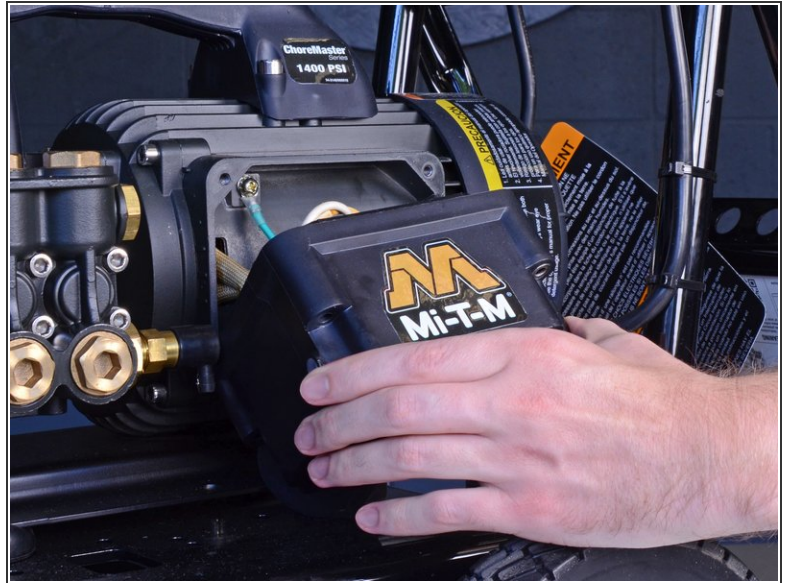
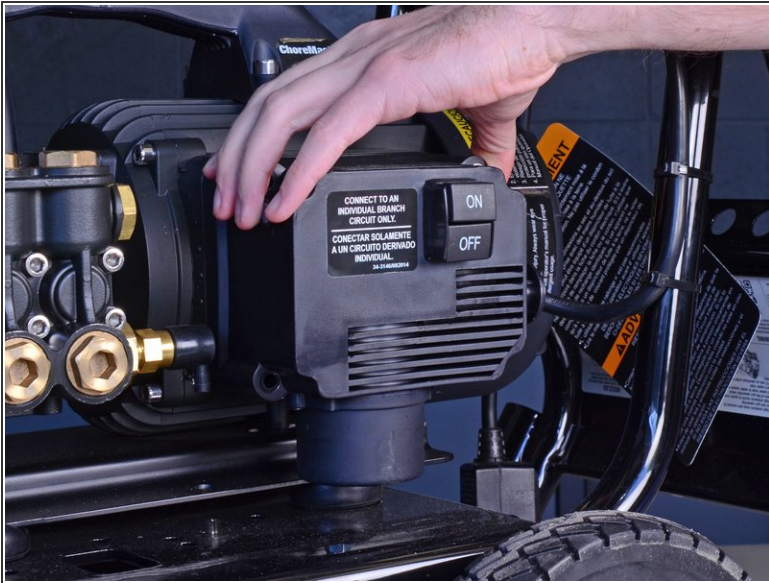
- i** Disconnect all hoses and unplug the power cord before performing any repairs on the Mi-T-M electric pressure washer.

Step 2 — Unscrew the electrical box



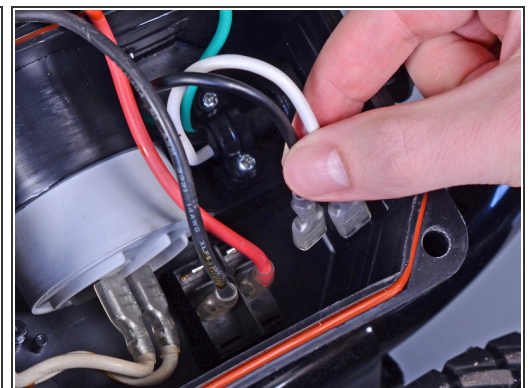
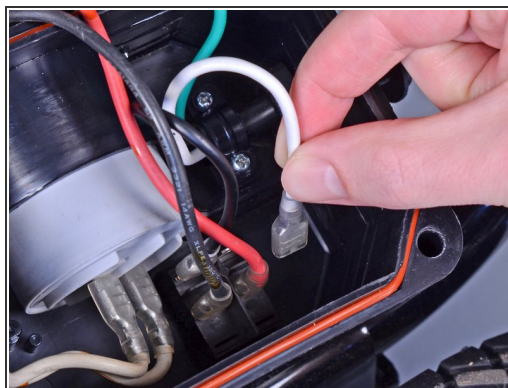
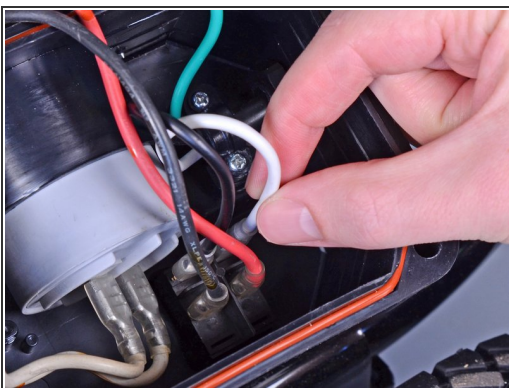
- Remove the four 59.2 mm-long 4 mm hex socket bolts from the electrical box.

Step 3 — Lower the electrical box



- Carefully pull the electrical box away from the engine until you have enough space to work inside it, making sure not to strain the cables that are still connected inside.
- ⓘ If you have trouble lowering the electrical box, you can [disconnect the green power cord wire](#) for more slack.

Step 4 — Disconnect the power cord wires inside the electrical box



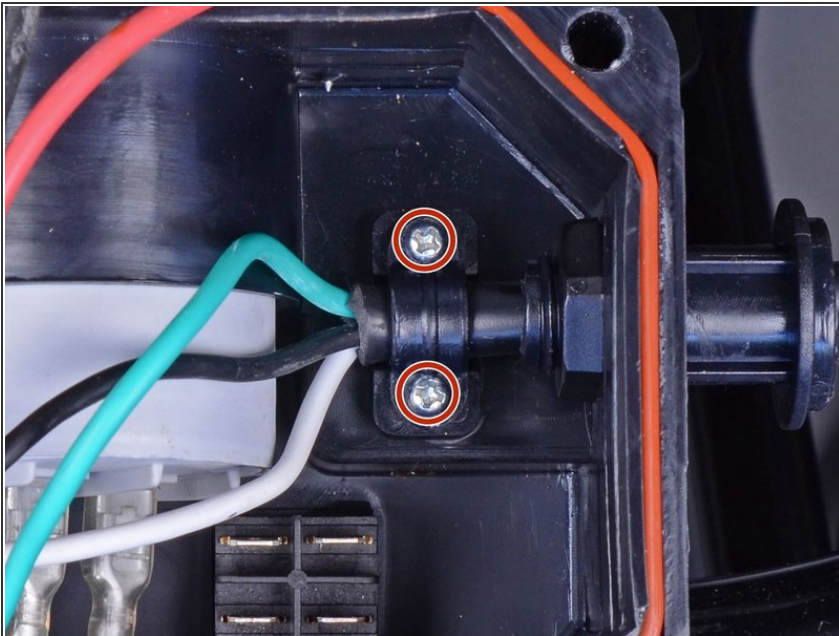
- Unplug the [two power cord wires](#) (one black, one white) from the rails on the back of the power switch.
- ⓘ The wires may be difficult to remove. If necessary, use a pair of pliers to pull them off of their rails.

Step 5



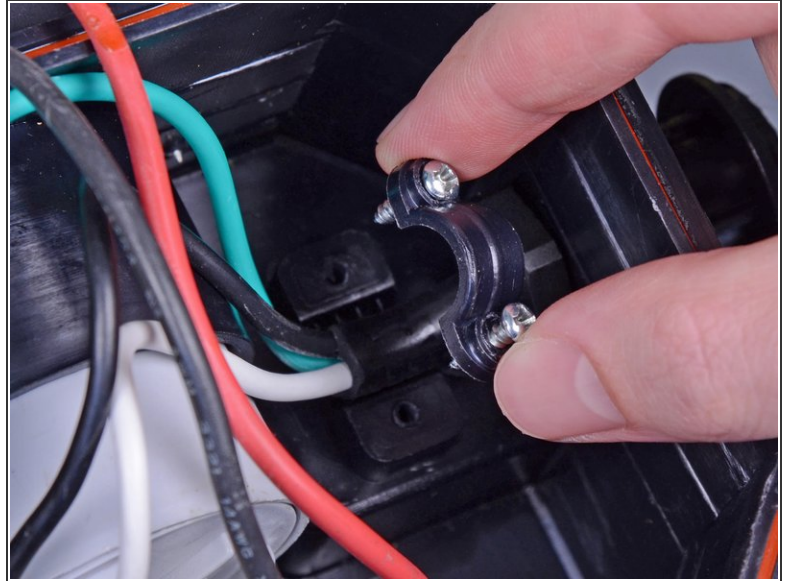
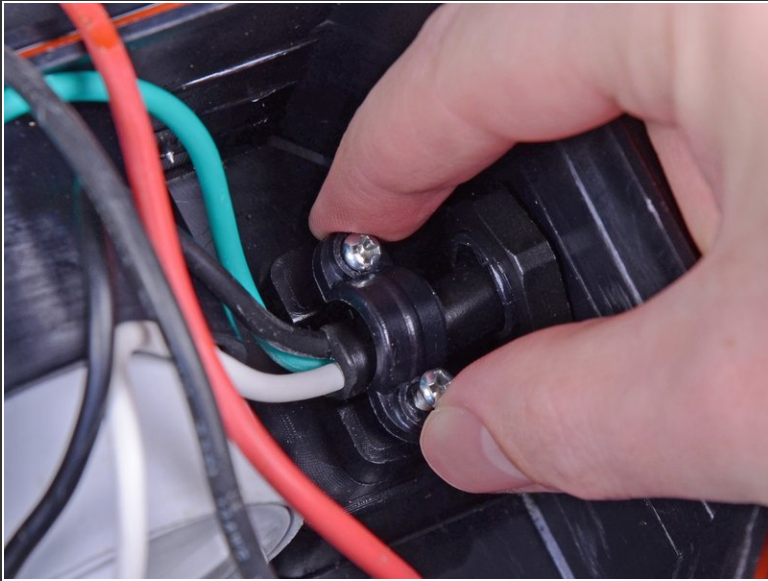
- Loosen the Phillips screw holding the fork terminal at the end of the green wire in place.
 - ❗ You do not need to completely remove this screw for this repair.
- Slide the fork terminal out from under the washer to disconnect the wire.

Step 6 — Remove the strain relief bracket



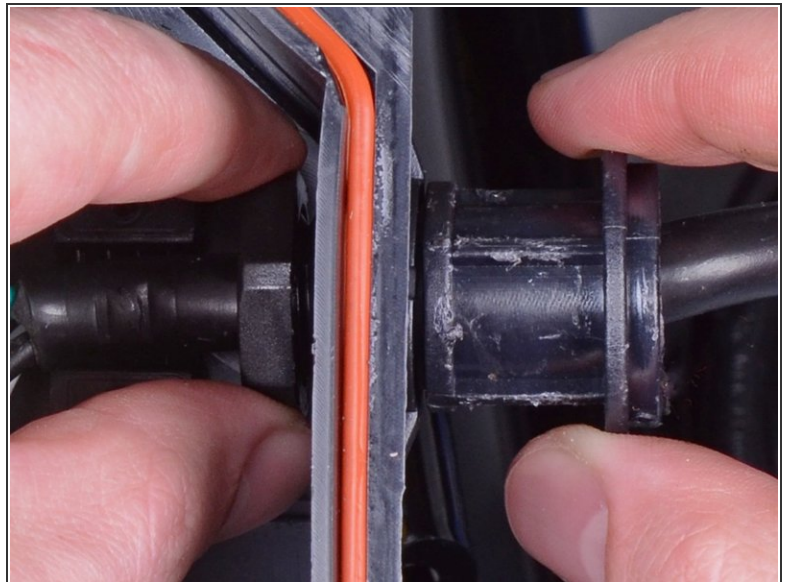
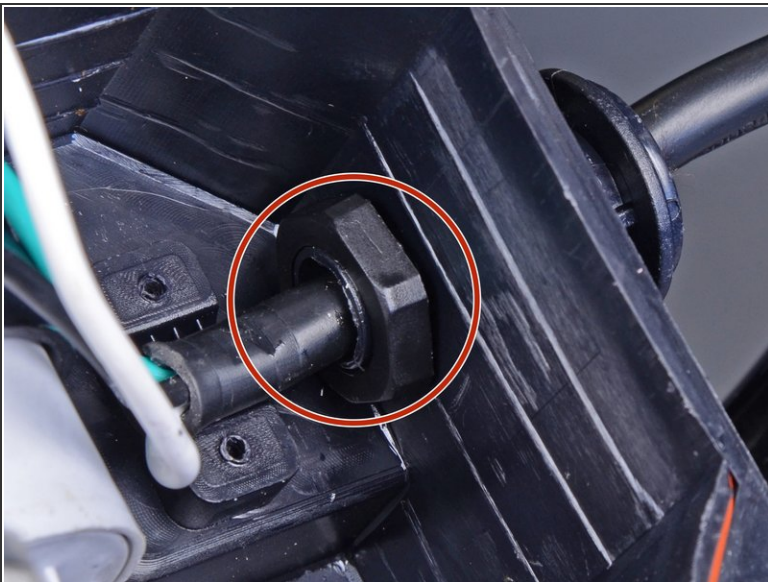
- Remove the two Phillips screws securing the power cord strain relief bracket.

Step 7



- Remove the power cord strain relief bracket.

Step 8



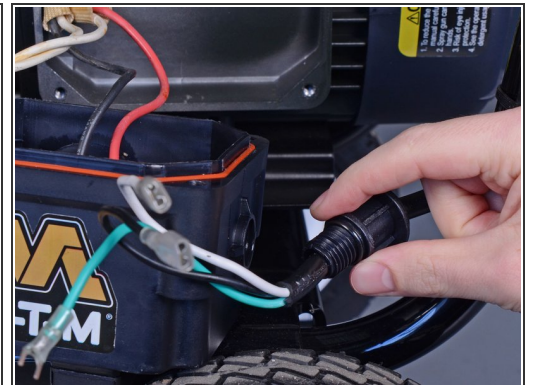
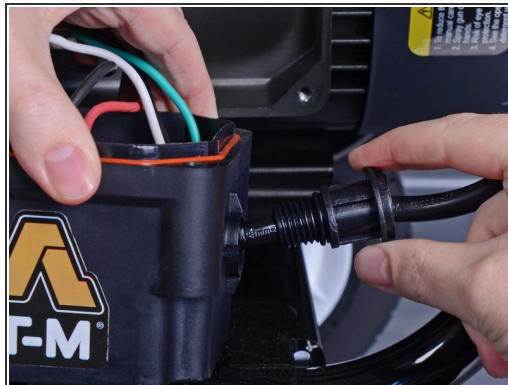
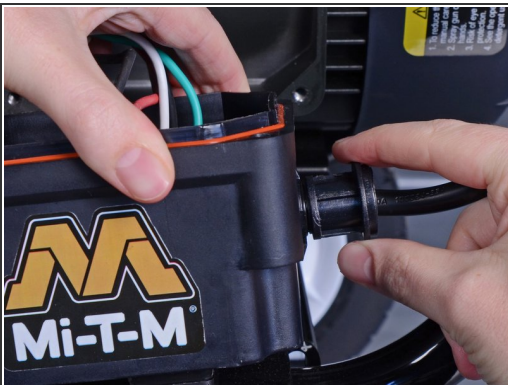
- Unscrew the plastic nut holding the power cord anchor in place.
- ⓘ You may have to stabilize the anchor with one hand while unscrewing the nut with the other.

Step 9



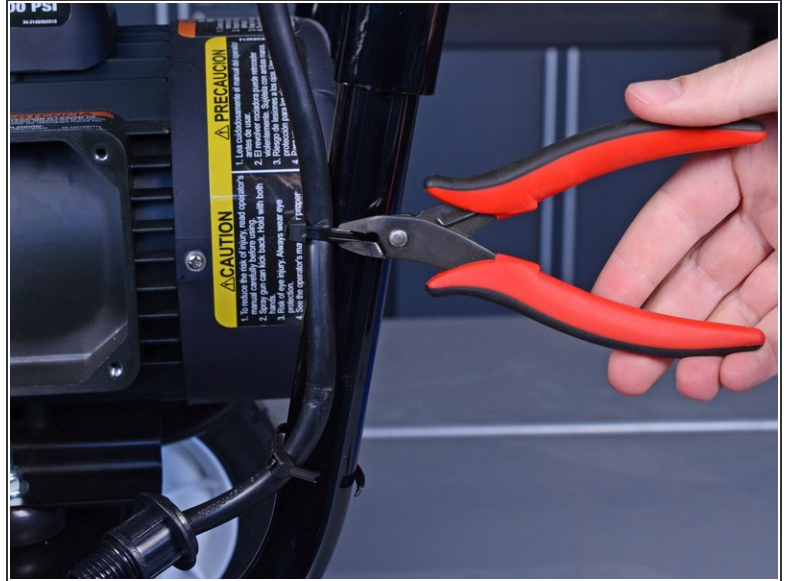
- Slide the nut to the end of the three power cable wires and remove it.
- ☒ Your replacement power cord likely won't come with an extra nut, so keep track of this one for reassembly.

Step 10 — Remove the power cord from the electrical box



- Remove the three wire ends of the power cord from the electrical box.

Step 11



- Cut the zip ties holding the power cord in place along the pressure washer frame.
- ☑ During reassembly, replace these zip ties **after** you're done inside the electrical box to ensure you have enough slack in the cable.

Step 12 — Remove the power cord



- Remove the power cord from the pressure washer.

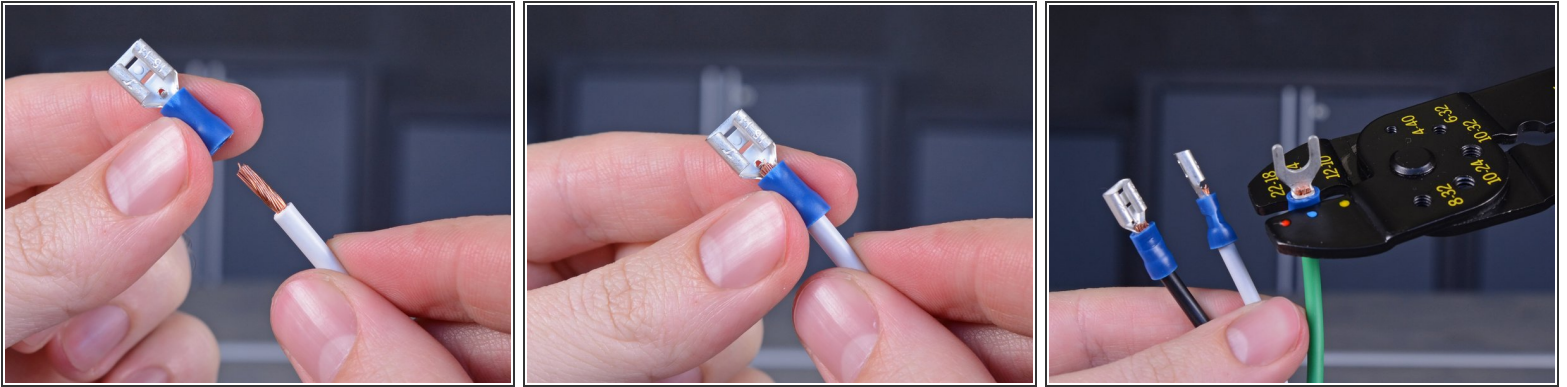
Step 13 — Replace the anchor



✦ If your replacement power cord doesn't come with an anchor for the electrical box:

- Remove the anchor from the original cord by pulling on it with a strong, steady force. You may need to use pliers or other gripping tools.
- Once the anchor is free, remove the rubber stopper from inside it with a pair of needle nose pliers.
- Finally, slide the empty anchor onto the new power cord, followed by the stopper. Then slide the anchor up onto the stopper until it can no longer be easily moved.

Step 14 — Add quick disconnects to the replacement cord



- ✦ If your replacement power cord does not come with stripped wire ends, [strip about half an inch of insulation](#) off of each wire to install new quick disconnect ends.
- Once the wires are stripped, place new 14-16 AWG insulated quick disconnects onto the bare wire ends and use a crimper to secure them.
- ⓘ To match the original configuration, the black and white wires both need female quick disconnect terminals and the green wire needs a fork terminal.

To reassemble your device, follow these instructions in reverse order.