



# MiTM Pressure Washers CA2703HDHB1 2017

## Output Assembly Replacement

Prerequisite guide only! Remove and replace the output assembly for the MiTM gas pressure washer.

Written By: Arthur Shi



This document was generated on 2020-04-05 08:29:39 PM (MST).

---

## INTRODUCTION

This is a prerequisite guide only! This is not a complete guide, and is meant to be used as part of other guides.

This guide shows how to remove the output assembly from the pump. The output assembly includes the unloader, along with various pipe fittings.



### TOOLS:

- [Adjustable Wrench](#) (1)
  - [Adjustable Wrench, large](#) (1)  
*Jaws open over 1"*
  - [Flathead Screwdriver](#) (1)
  - [Wooden Block—3"](#) (1)
  - [Teflon tape](#) (1)
-

## Step 1 — Determine the unloader assembly



**i** Before you begin, be sure that the engine is powered off and is cool to the touch.

- **There are two versions of the unloader assembly:**

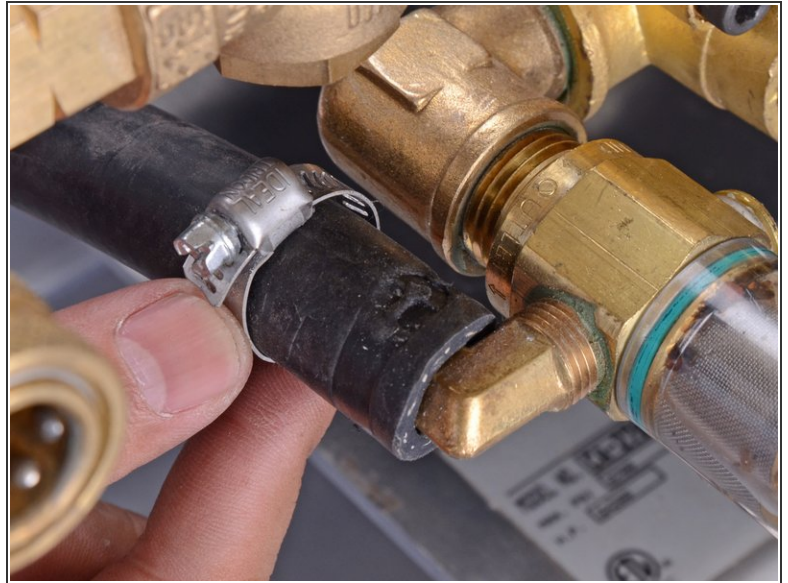
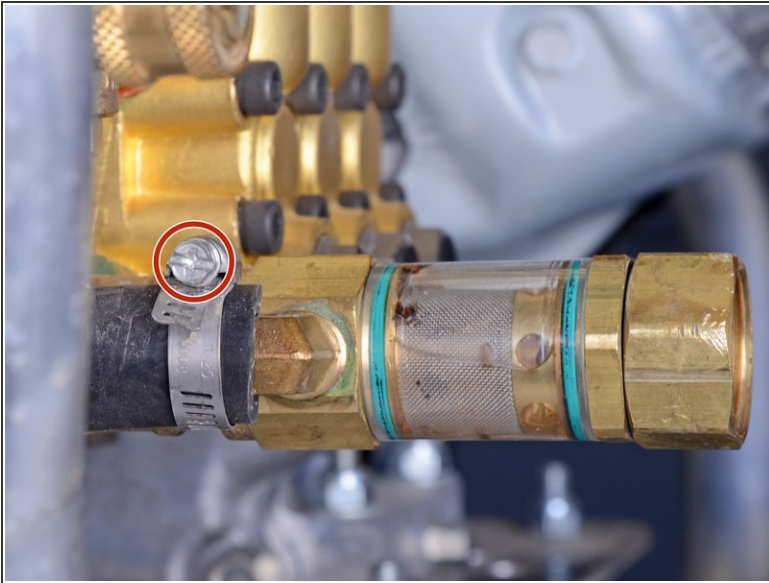
- First image—earlier pressure washers feature an all-in-one assembly (part 8-0631) that's easy to replace, but gave users the ability to break the pump.
- Second image—later models use a tamper-proof, harder to remove unloader (part 8-0656), connected by a series of pipe fittings.

**i** This guide is written for the tamper-proof unloader assembly.

- If you need to remove an all-in-one style unloader, use a large adjustable wrench to unscrew the two large Banjo bolts. This will disconnect the unloader from the pump assembly.

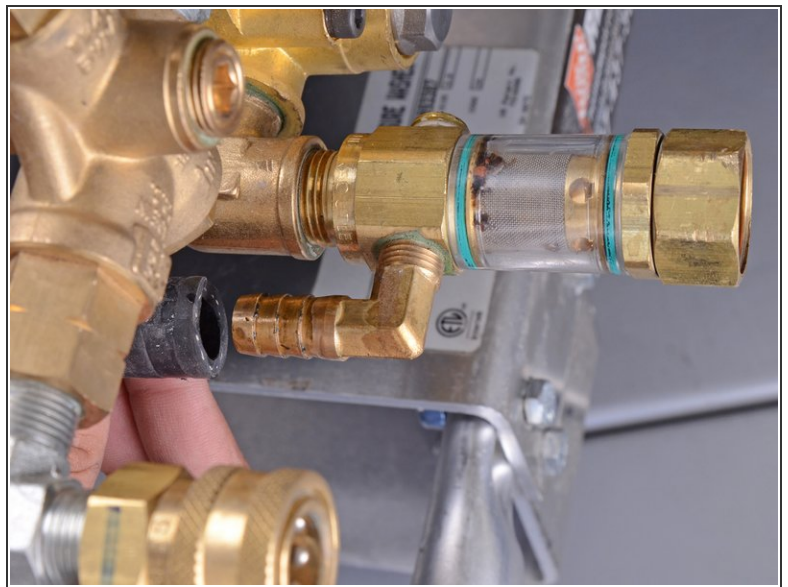
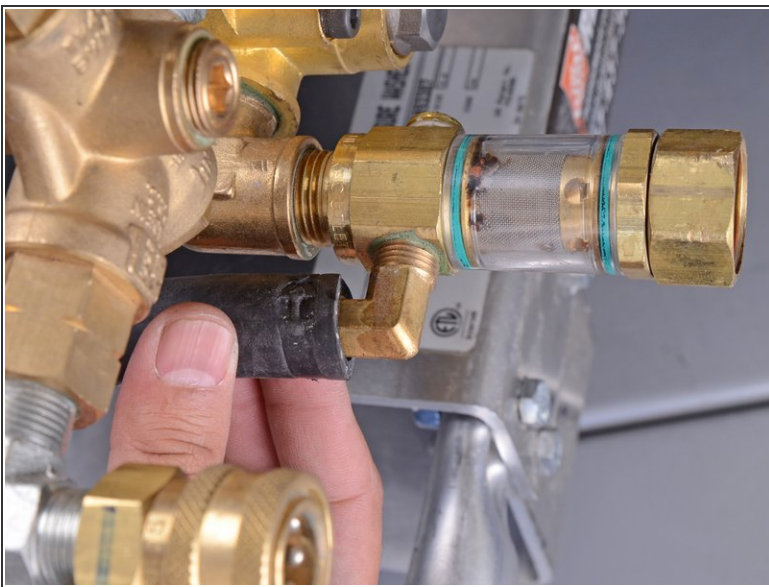


## Step 2 — Loosen the hose clamp



- Use a 1/4" socket or a large flathead screwdriver to loosen the hose clamp near the inlet filter.
- Slide the hose clamp away from the end of the hose.

## Step 3 — Disconnect the return hose



- Wiggle the hose and pull it off of the brass nipple.

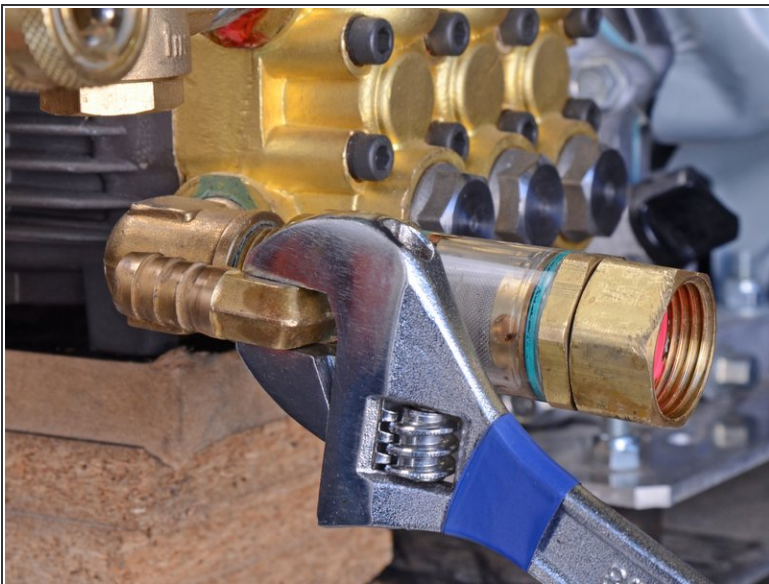


## Step 4 — Position the support block



- Slide a 3" tall block underneath the pump assembly to help support the pump.

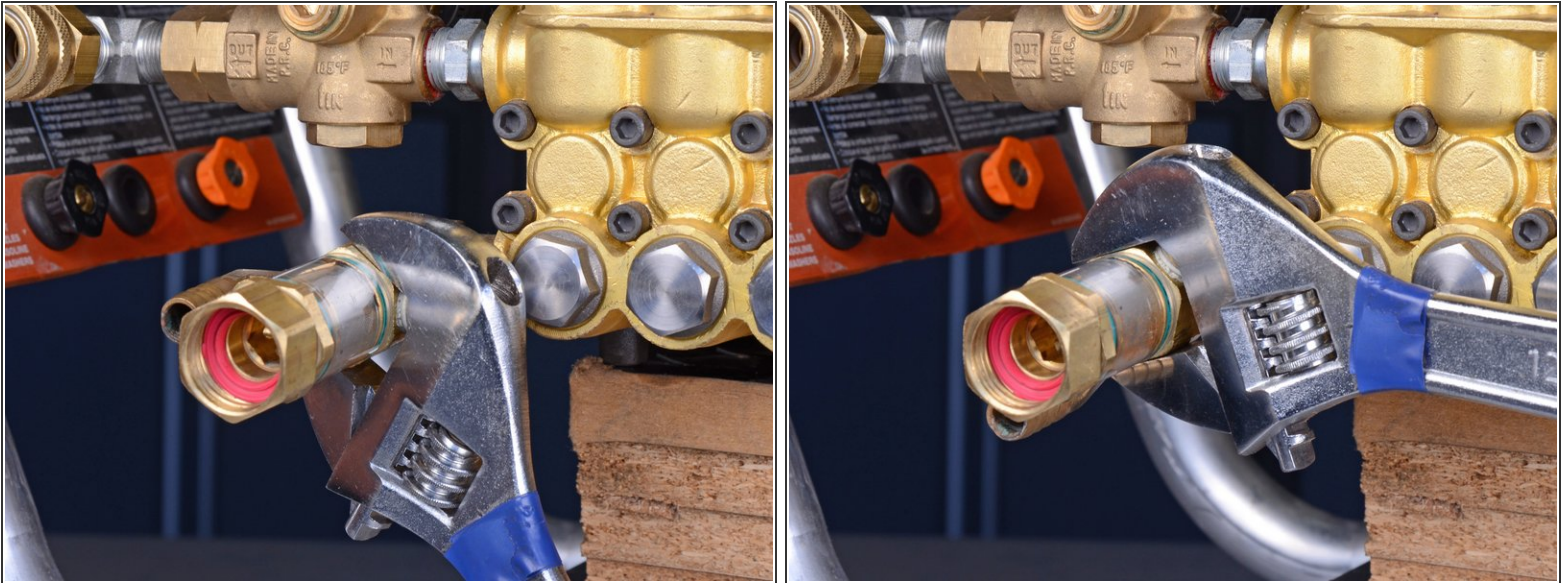
## Step 5 — Re-position the return elbow



- Use a 1/2" or adjustable wrench to loosen and twist the return elbow **half a turn**, so that it faces the opposite direction.
  - ⓘ This will allow the fitting to clear the pump edge without being removed.

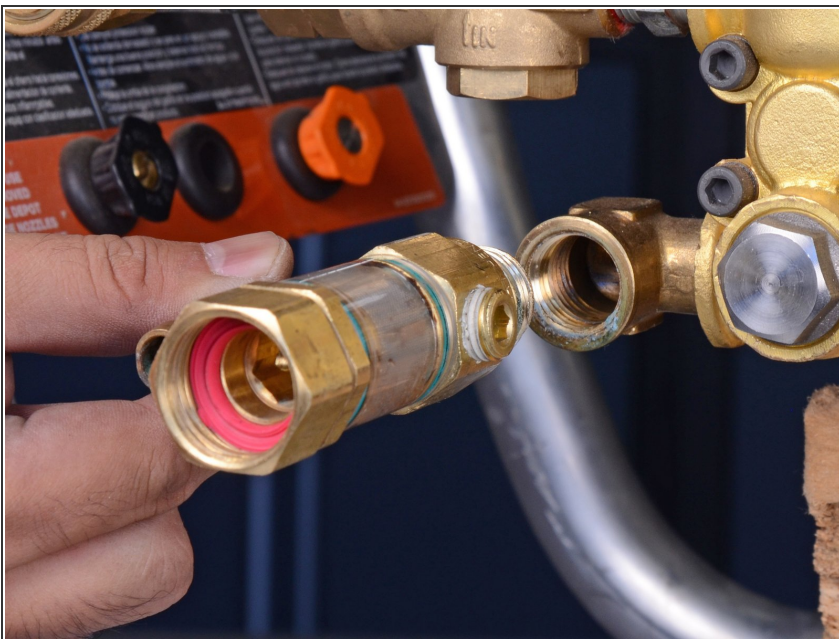


## Step 6 — Loosen the filter



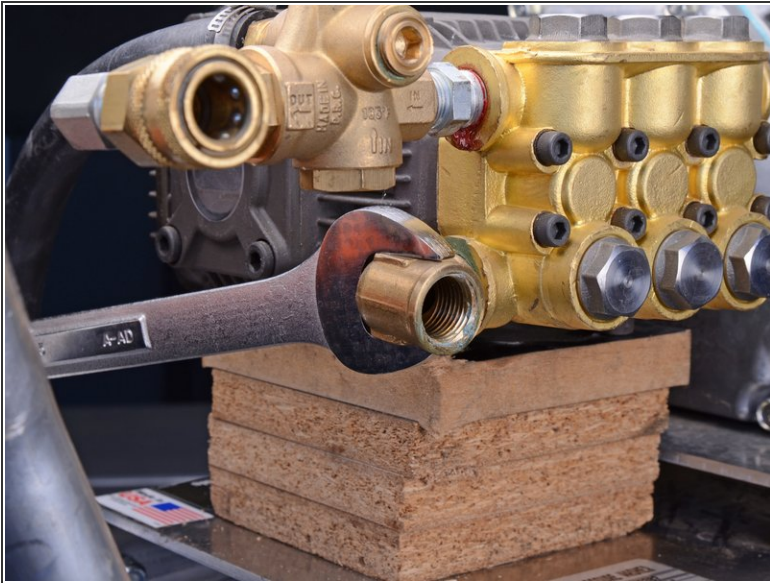
- Use a large adjustable wrench to loosen and unscrew the filter.

## Step 7 — Remove the filter



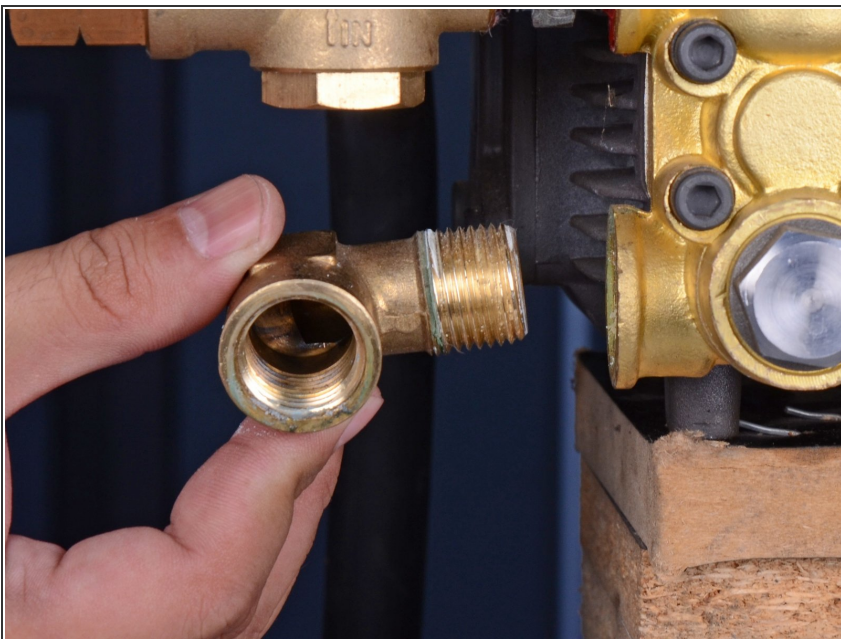
- Remove the filter with the return elbow attached.

## Step 8 — Loosen the input elbow



- Use a 1" or large adjustable wrench to loosen and unscrew the pump input elbow.

## Step 9 — Remove the input elbow



- Remove the input elbow fitting.



## Step 10 — Loosen the output assembly



- Use a 3/4" or adjustable wrench to loosen and disconnect the coupling from the pump assembly.

## Step 11 — Remove the output assembly



- Remove the output assembly.



To reassemble your device, follow these instructions in reverse order.

When you re-connect the fittings, clean off the old thread sealant and apply new thread sealant (tape or pipe dope).