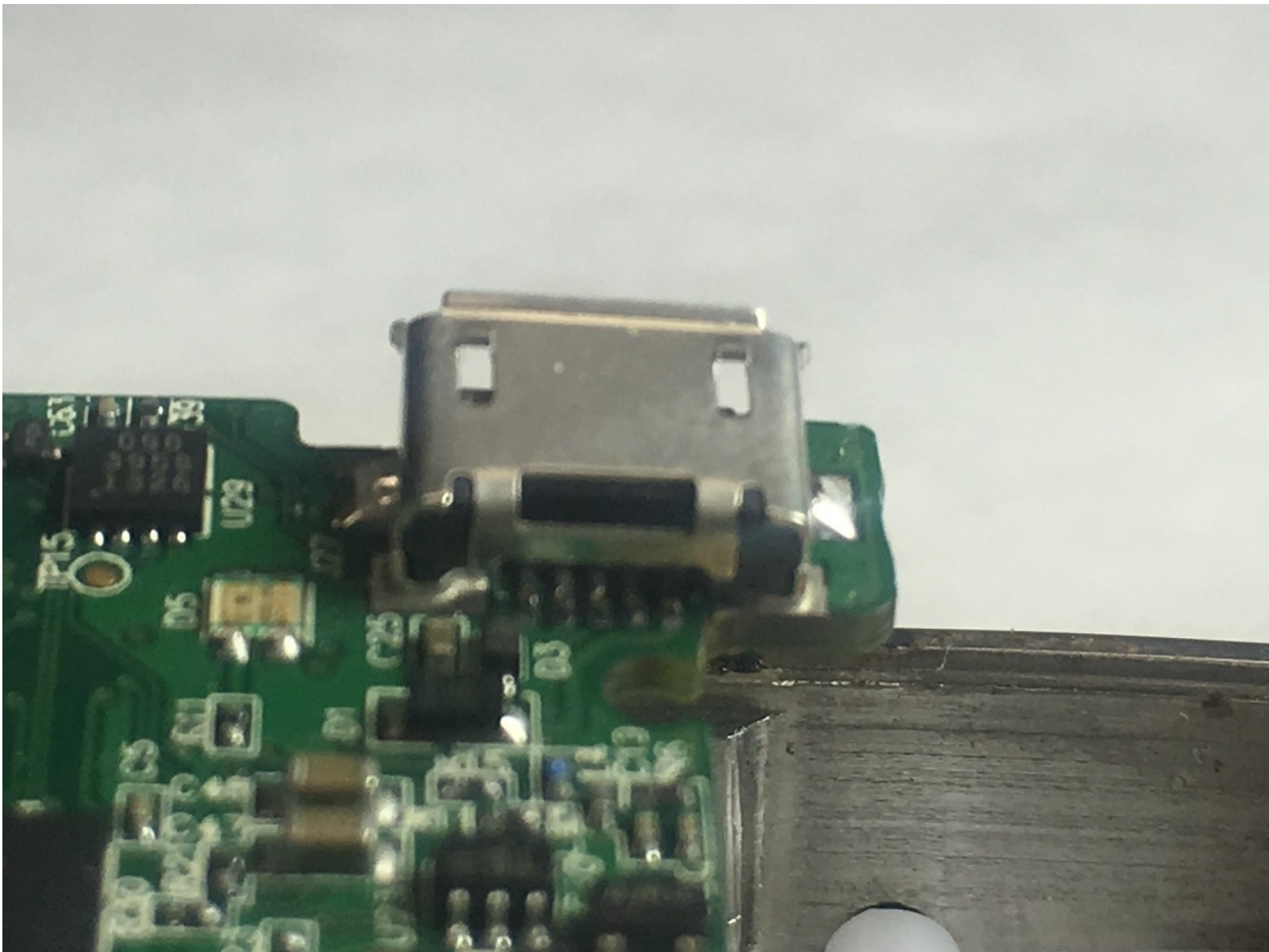




# Micro-USB Port Replacement

This guide will provide steps that show how to desolder the Micro-USB port from the motherboard

Written By: Michael Miller

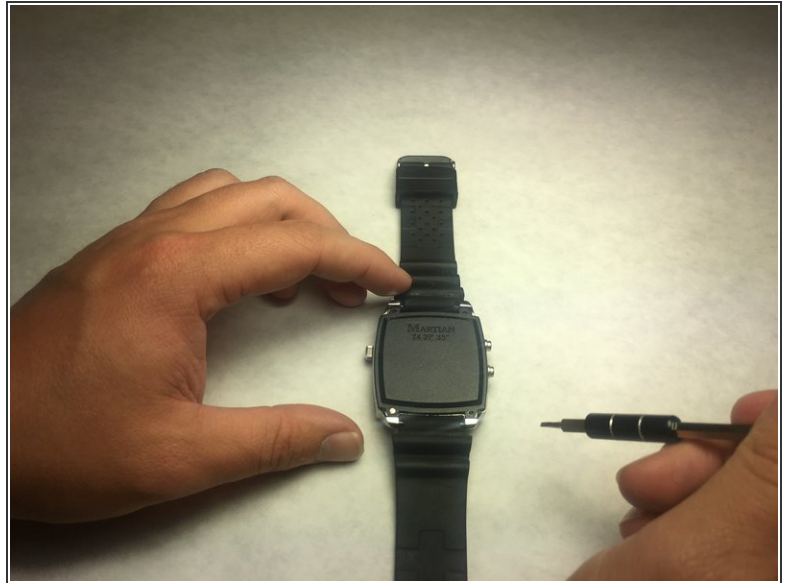
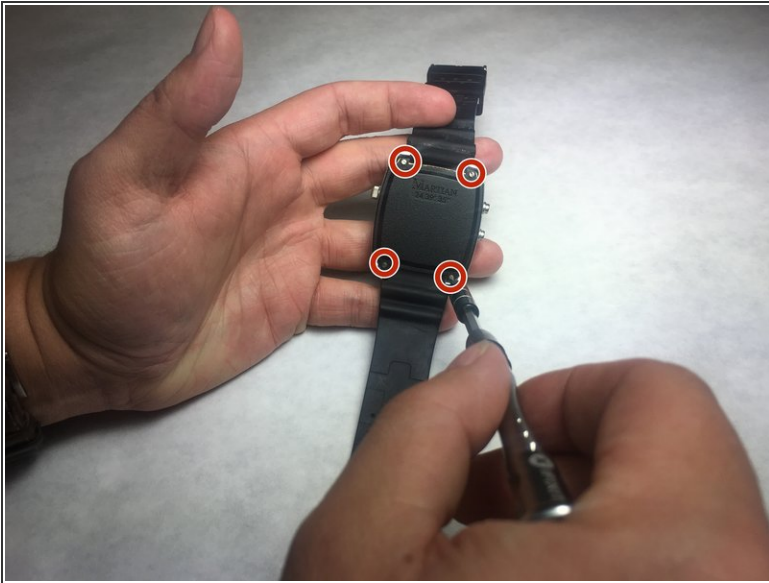




## TOOLS:

- [1.5 mm Flathead Screwdriver](#) (1)
- [iFixit Opening Tools](#) (1)
- [Phillips #00 Screwdriver](#) (1)
- [Soldering Iron](#) (1)
- [Desoldering Braid](#) (1)
- [Tweezers](#) (1)
- [Spudger](#) (1)

## Step 1 — Back Plate



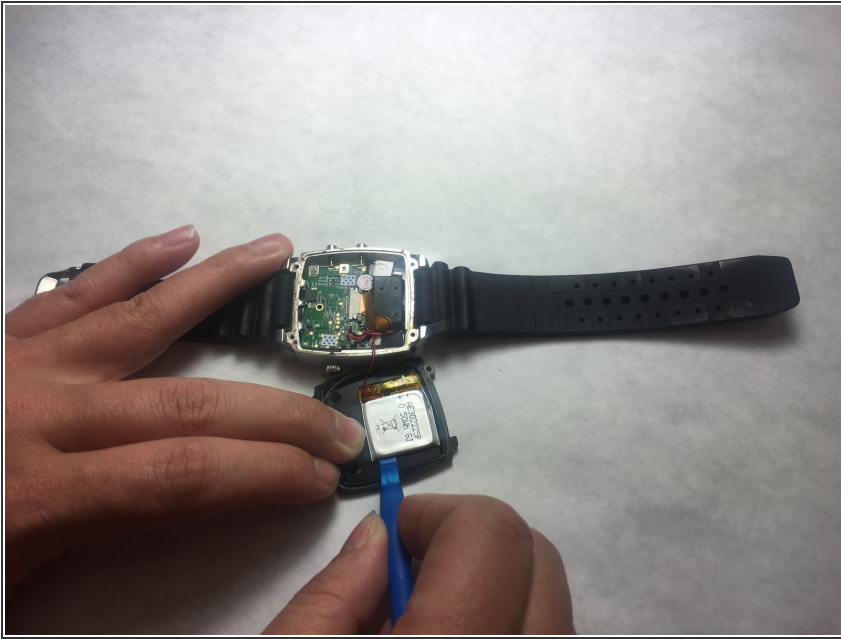
- Unscrew the four 3.4 mm flat head screws

## Step 2



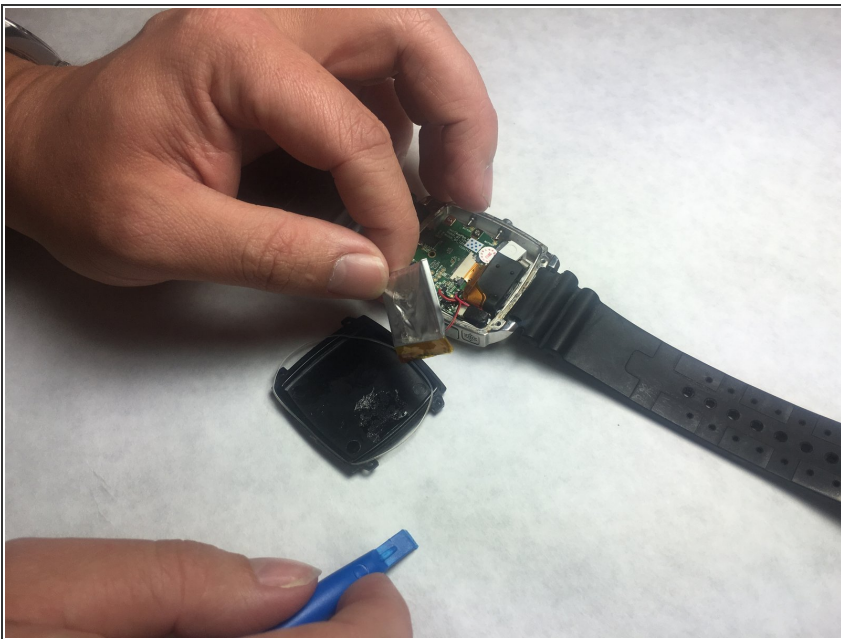
- Carefully lift the back plate off the watch. You will notice a lithium battery and rubber gasket attached to the back plate.

## Step 3 — Lithium Battery



- **i** If not replacing lithium battery, skip down two steps.
- Using the plastic removal tool, pry the battery from the backing plate. The battery is simply attached with glue.

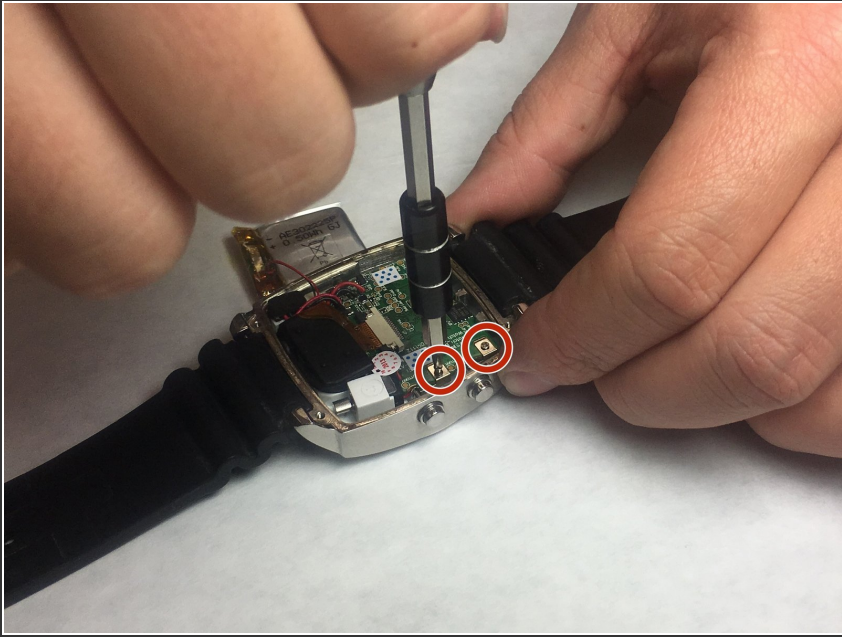
## Step 4



- Desolder the battery connections from the motherboard. Learn how to solder components [here!](#)

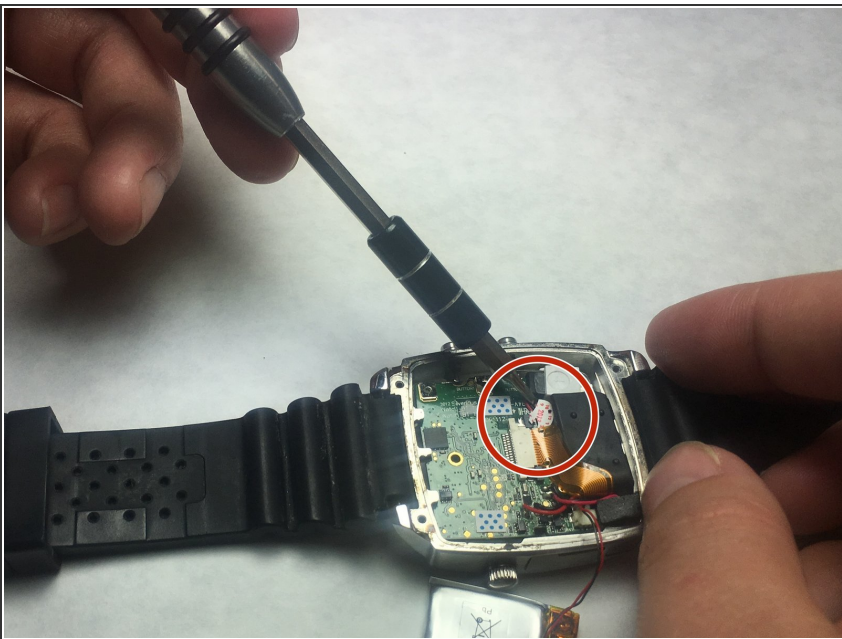


## Step 5 — Motherboard



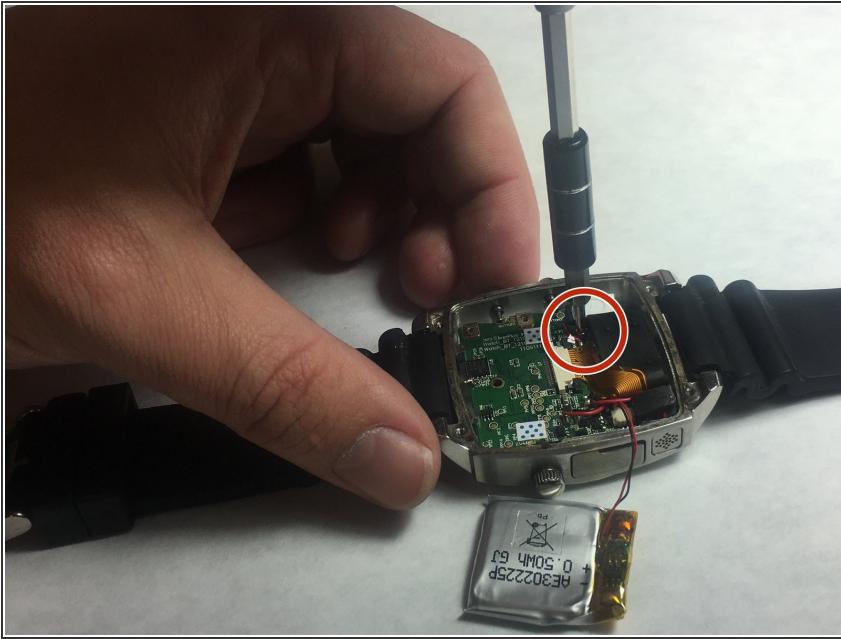
- Use PH00 screw driver to remove two 2.4mm Phillips head screws.

## Step 6



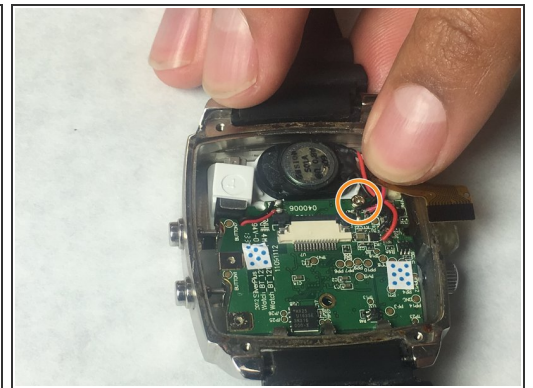
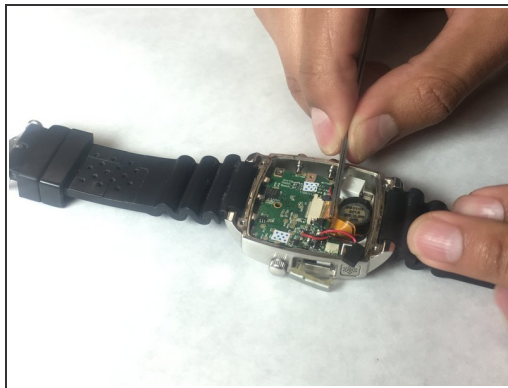
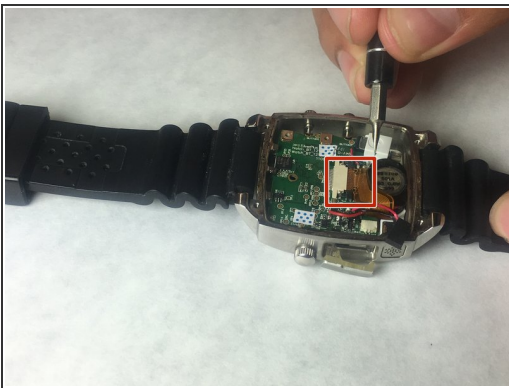
- Use a spudger or tweezers to remove a white sticker that covers a Phillips head screw.

## Step 7



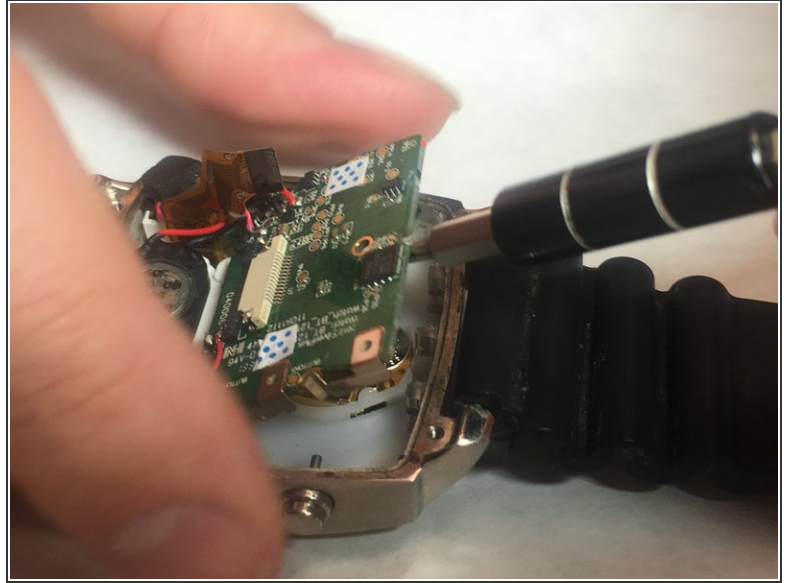
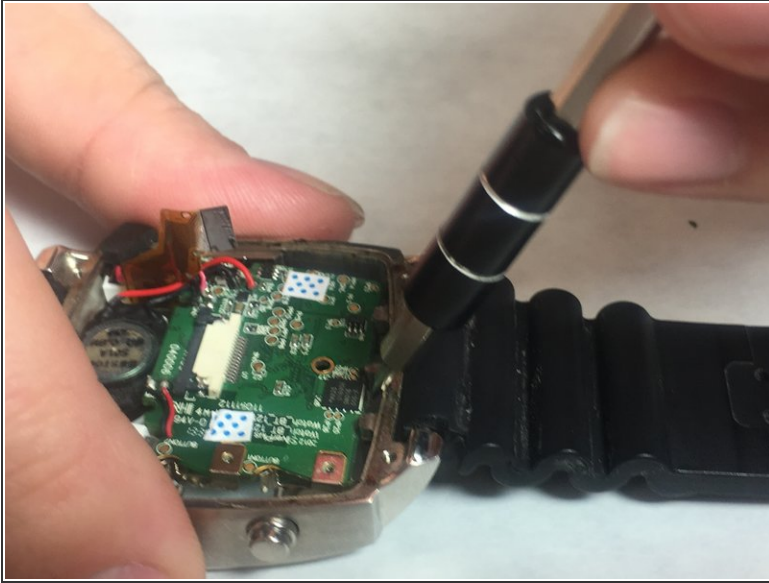
- Use PH00 screwdriver to remove 5.2mm Phillips head screw

## Step 8



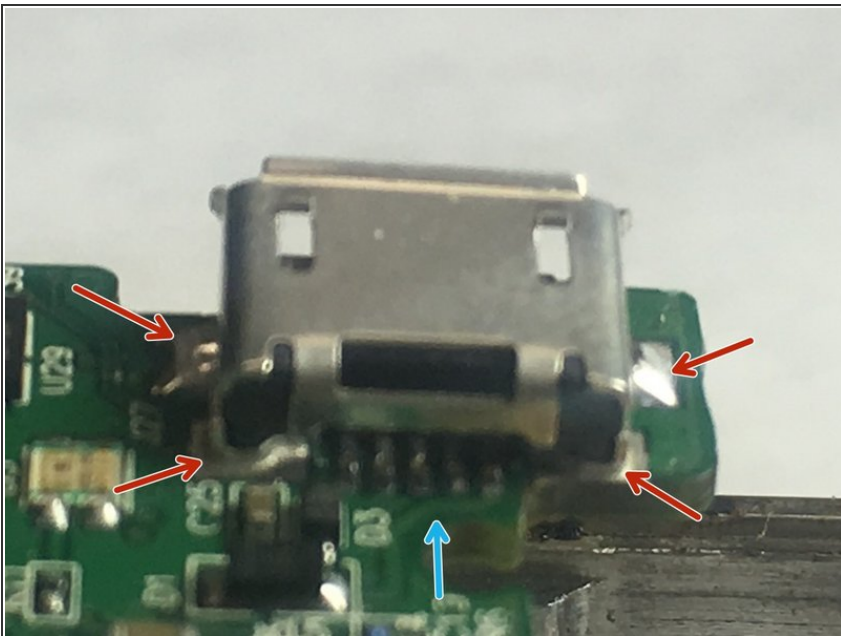
- Use ESD safe tweezers to remove the gold ribbon cable.
- This will expose a second 5.2mm Phillips head screw that can be removed with a PH00 screwdriver.

## Step 9



- Use a spudger to gently pry on the motherboard towards the top of the watch, being towards the 12 o'clock position to loosen the motherboard.
- You can now access the parts and pieces on the bottom of, and below the motherboard.

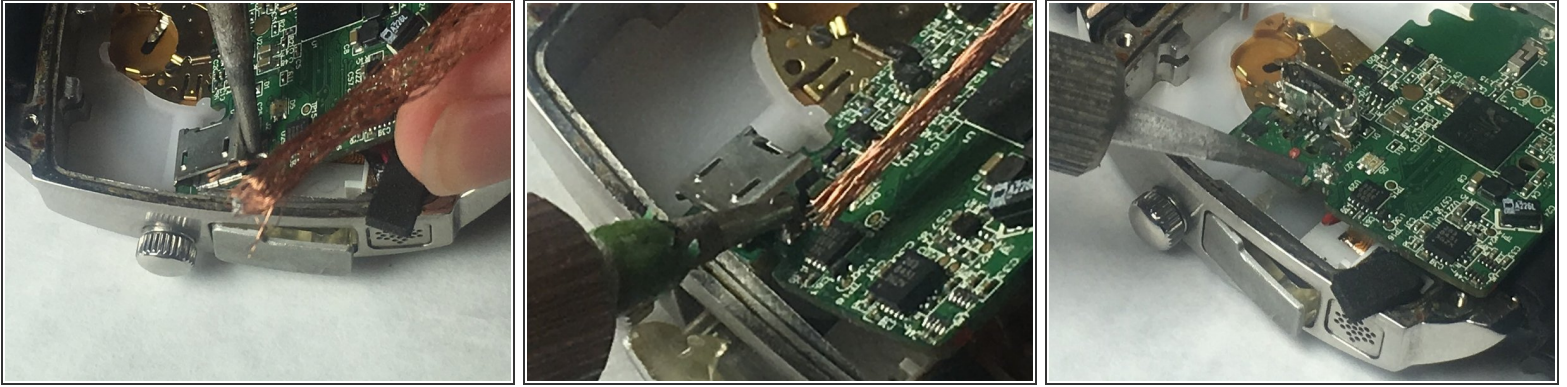
## Step 10 — Micro-USB Port



- Locate the four main soldering points marked in red.
- Be aware of the five additional soldered pins marked by the blue arrow.



## Step 11



- Begin to desolder the points pointed out in the last step.
- Use the soldering wick to help remove the solder.

To reassemble your device, follow these instructions in reverse order.