



Microgear CX-20 Body Replacement

Use this guide if you want to replace the body of a Microgear CX-20 quadcopter by transferring its circuit board, motors, and antenna.

Written By: Bailey Herbert



INTRODUCTION

Follow this guide to replace a damaged body on a Microgear CX-20 quadcopter. This is the fastest method to fix cracks, broken arms, or other significant body damage.

The quadcopter consists of circuit boards, motors, and LEDs which must be extracted and transferred into a new body. The replacement is easy, quick, and requires no special tools.

Note that the components in this model are extremely sensitive to direction and must be oriented properly inside the new body. Take special care to record and note the orientation of each component you extract.



TOOLS:

- [12mm Wrench](#) (1)
- [Phillips #1 Screwdriver](#) (1)
- [Allen wrench 1.5mm](#) (1)
- [Allen Wrench 2.0mm](#) (1)



PARTS:

- [Cheerson CX-20 RC Quadcopter Spare Parts Body Shell Cover Set](#) (1)

Step 1 — Body



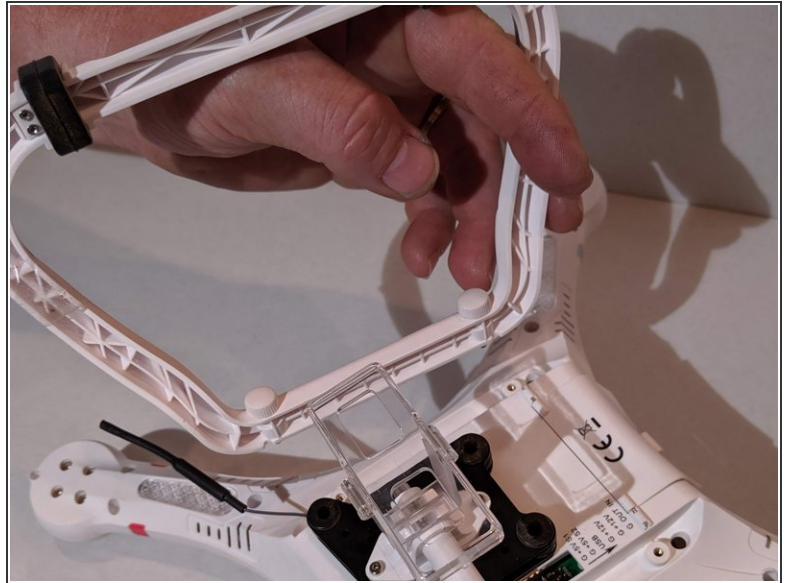
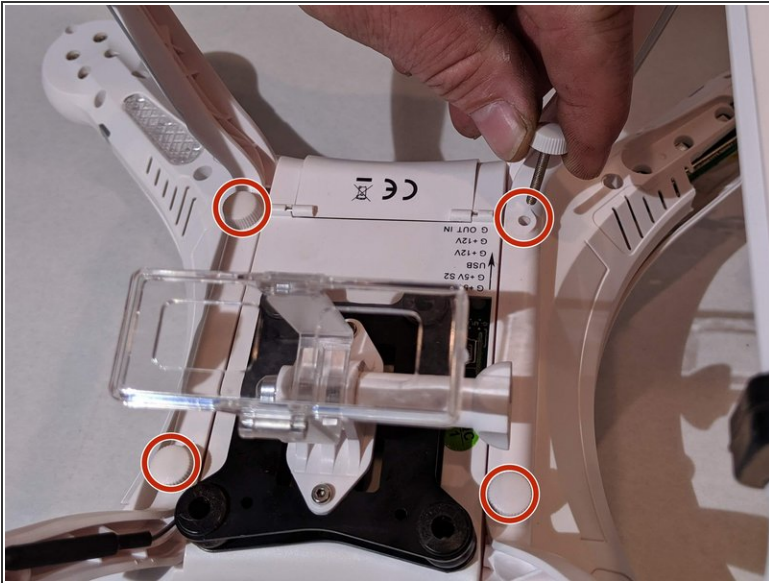
- Disconnect and remove the battery from the battery tray.

Step 2



- Use a 12mm wrench to loosen and remove the silver castle nuts from the top of all four propellers by rotating them counter-clockwise.
- Gently pull the propellers upward to lift them off the motors.

Step 3



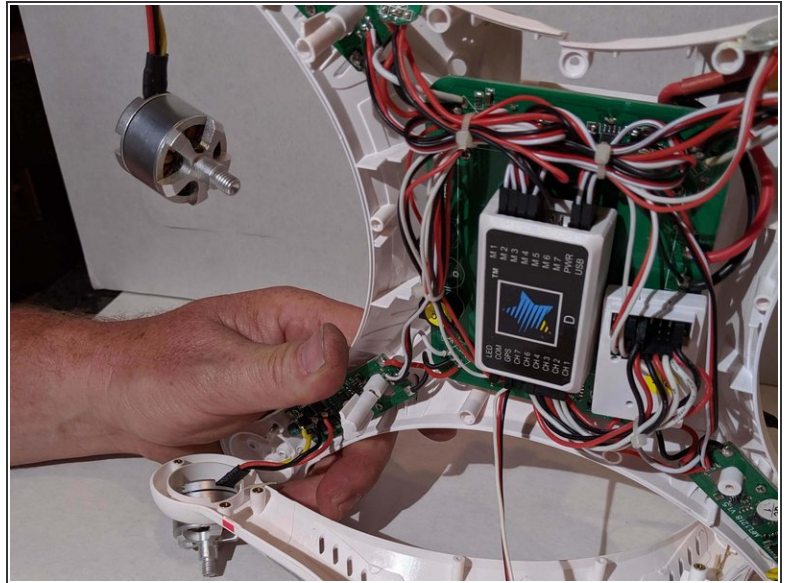
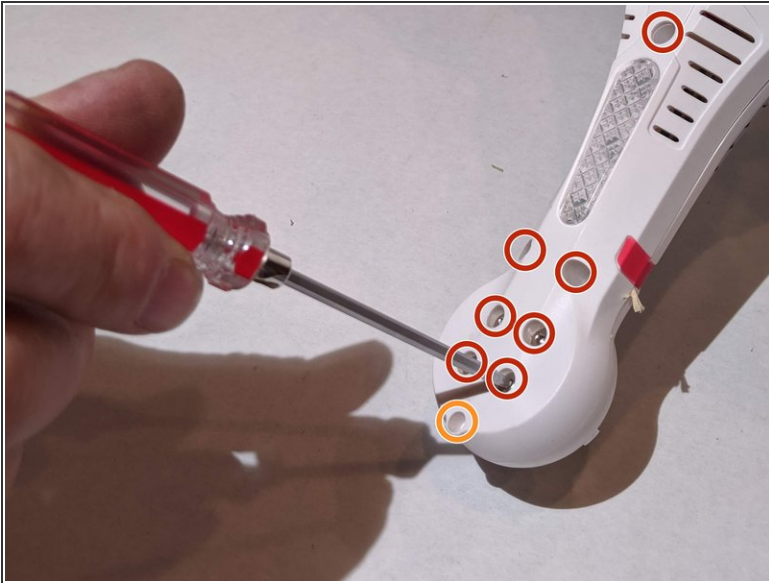
- Flip the quadcopter upside down.
- On the bottom of the quadcopter, twist the the four white retaining thumb screws on the two landing gear struts counter clock-clockwise to loosen and remove them.
- Pull the landing gear strut upward to detach it from the body, and set it aside.

Step 4



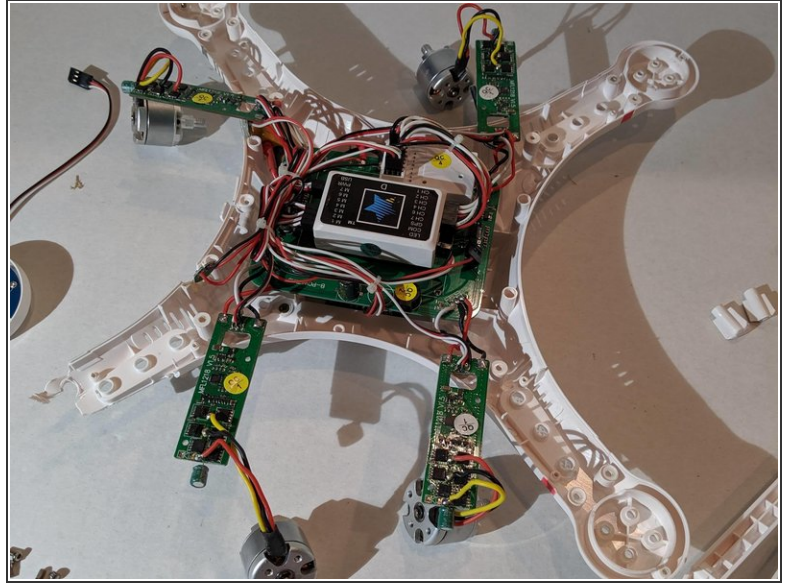
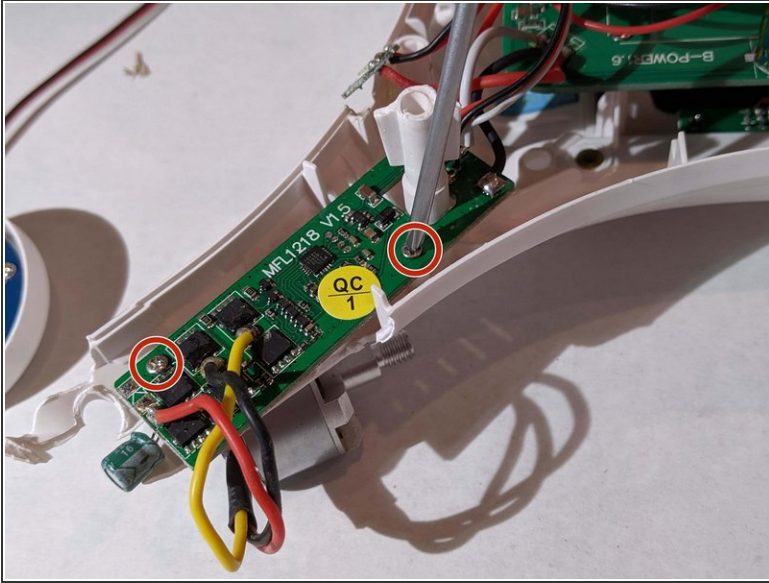
- Use a 1.5mm Allen wrench to remove the two 5.5mm screws under the black camera platform. Remove the platform.

Step 5



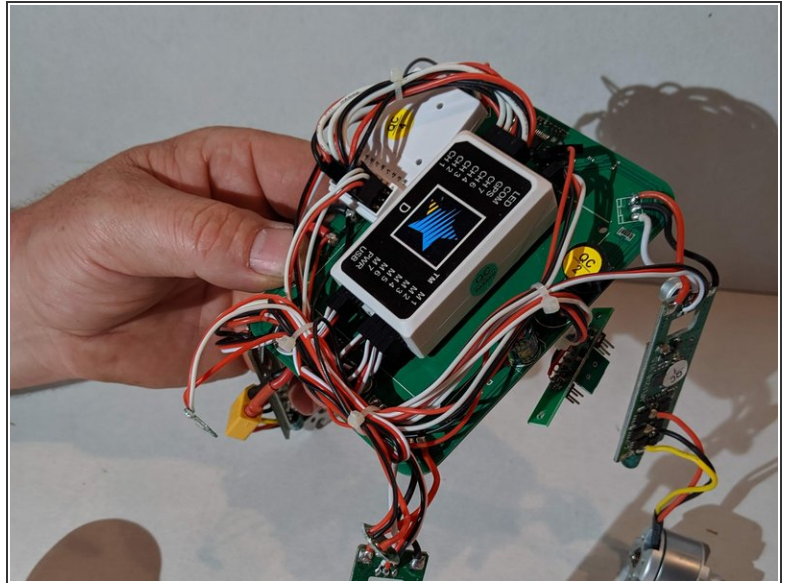
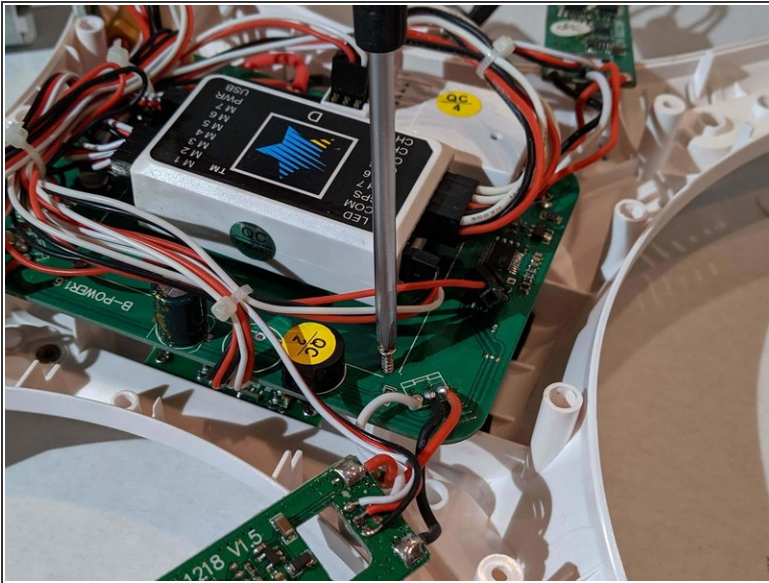
- On each of the four arms, use a 2mm Allen wrench to remove seven 5.5mm cap-head screws.
- At the very end of all four arms, use a 1.5mm Allen wrench to remove the single 7.5mm cap-head screws.
- Gently pull apart the top and bottom halves of the body. They will separate.

Step 6



- Use a Phillips screwdriver to remove two 5.5mm Phillips-head screws on the circuit boards in each of the four arms.
 - Gently pry the circuit boards upward until they become loose.
- ⚠ Do not disconnect any wires.

Step 7



- Use a Phillips #1 screwdriver to remove the four 5.5mm Phillips-head screws in each corner of the main circuit board.
- Lift the main circuit board out of the chassis.
 - ⚠ Keep track of the circuit board's orientation relative to the body. It must be placed in the new body in the same orientation.

Step 8



- Pull upward on the GPS module cover to remove it.
- Remove the four 3.5mm Phillips-head screws on the circuit board.
- Gently pry the board out of the chassis.

To reassemble your device, follow these instructions in reverse order. The manual that came with the quadcopter also contains assembly instructions.