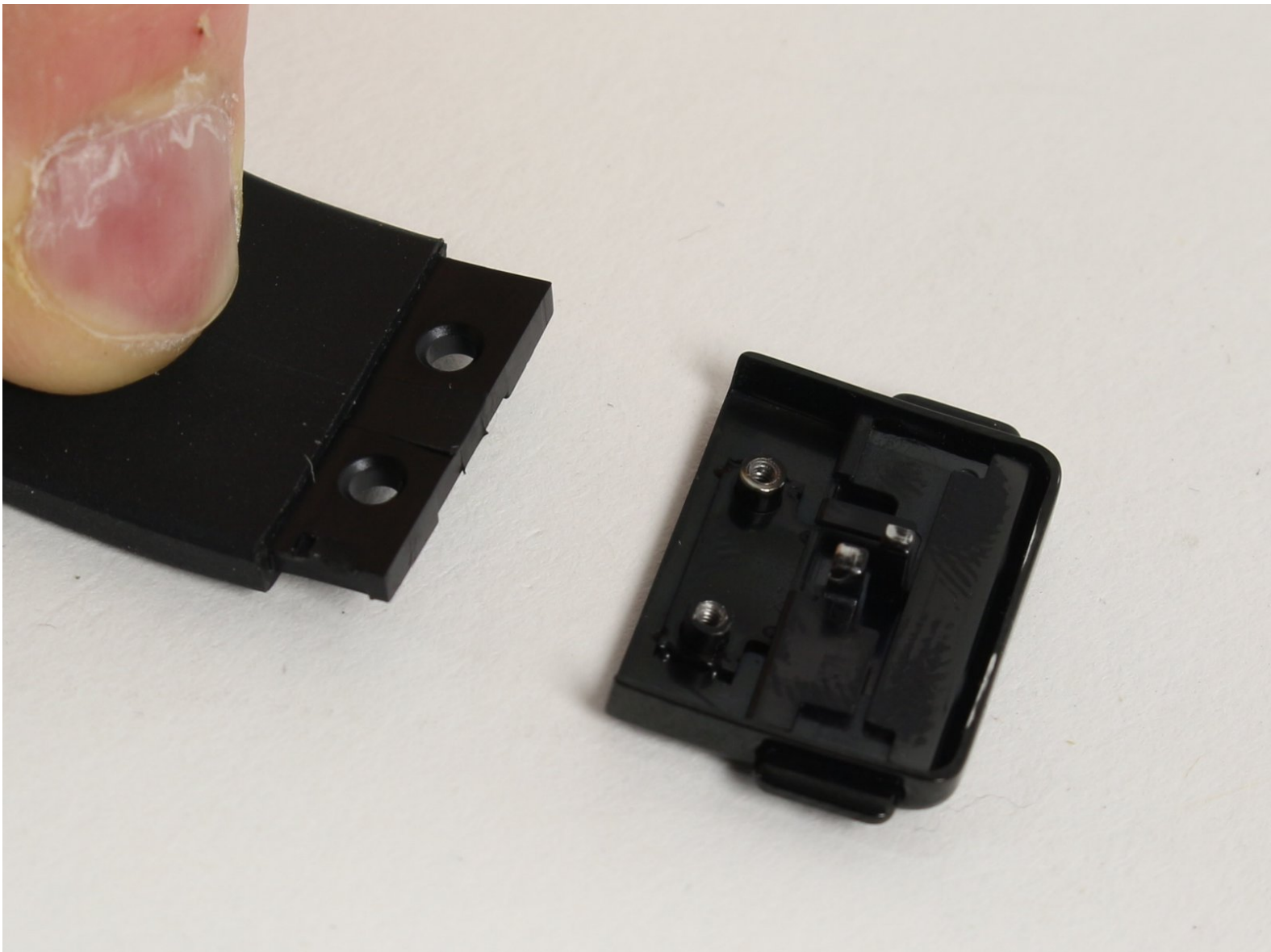




# Microsoft Band Wrist Clasp Replacement

This guide will safely replace the spring clasp system.

Written By: Chad Steese



---

## INTRODUCTION

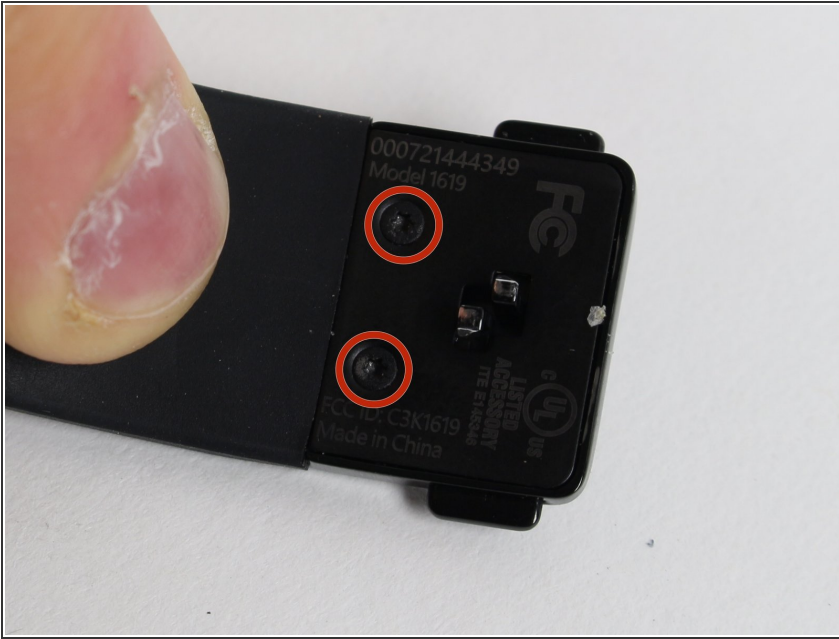
You might try keeping track of the screws with the use of a magnetic mat.



### TOOLS:

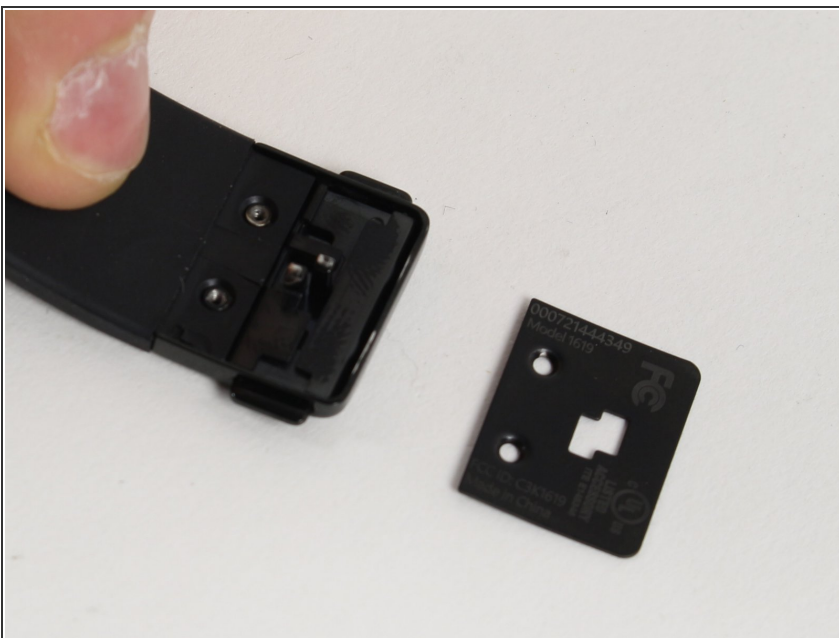
- [T3 Torx Screwdriver](#) (1)
-

## Step 1 — Wrist Clasp



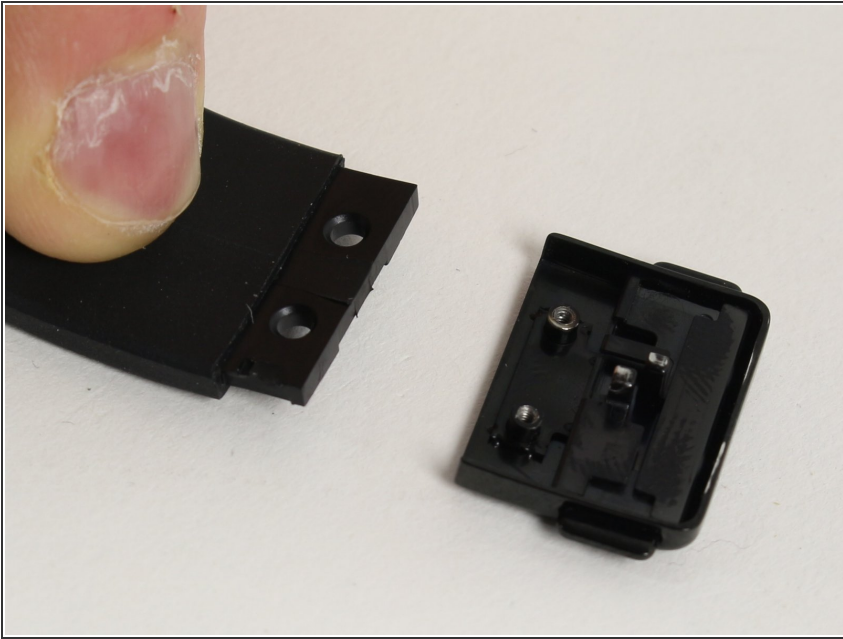
- Using the T3 Torx Screwdriver, remove the two 2.00mm long screws from the inside of the clasp.

## Step 2



- Remove the metal plate with the serial and model number on it by pulling it straight up around the two hooks.

### Step 3



- Pull the two securing pins out of the rubberized part of the band.

To reassemble your device, follow these instructions in reverse order.