



Microsoft Bluetooth Notebook Mouse 5000

Central wheel button switch Fix

How to fix central button click issues

Written By: Gianni Valenza



INTRODUCTION

How to tear down and reassemble the mouse. In order to fix the microswitch I used just a blow of pressurized air.



TOOLS:

- [JIS #1](#) (1)
 - [T6 Torx Screwdriver](#) (1)
-

Step 1 — How to start



- With a little flat screwdriver like iFixit 2.0 gently remove the laser plastic icon; it's attached with bi-ahdesive tape
- Keep the plastic cover in a safe and dust free place

Step 2 — Remove first screw



- Unscrew the torx6 that is under the cover you just removed
- You'll need a T6 bit like the iFixit one I used

Step 3 — Remove the gray plastic lid



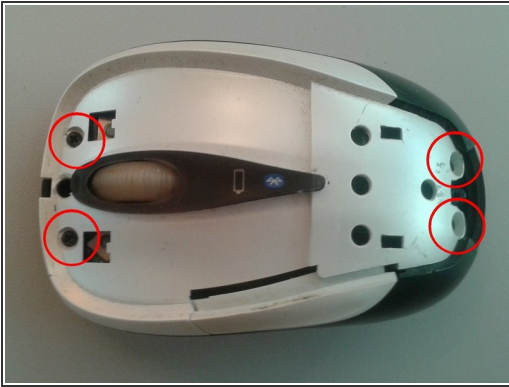
- This is a tricky one, you can easily now lift the lid from where I pointed out
- After this you have to "unclick" the front of the lid, gently lifting from down to up, nothing will break
- As you see in the next image the lid has a "clip" that clips on the base

Step 4 — Remove the white plastic left & right buttons



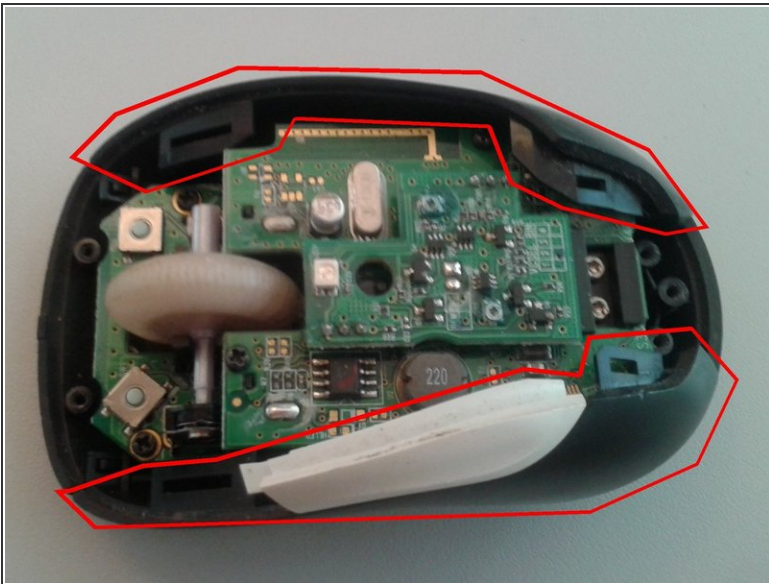
- You have to carefully unclick both left and right the plastic lid with buttons, acting with your nails under the lid
- It's easy to insert your nails starting from the button side to the left in this image, and then shifting to the right
- You'll clearly hear the "click" when the tab loose: simply do it on the other side, and raise the whole thing up
- You can see the two tabs of the buttons in the second picture of this step

Step 5 — Unscrew the 4 J1 screws



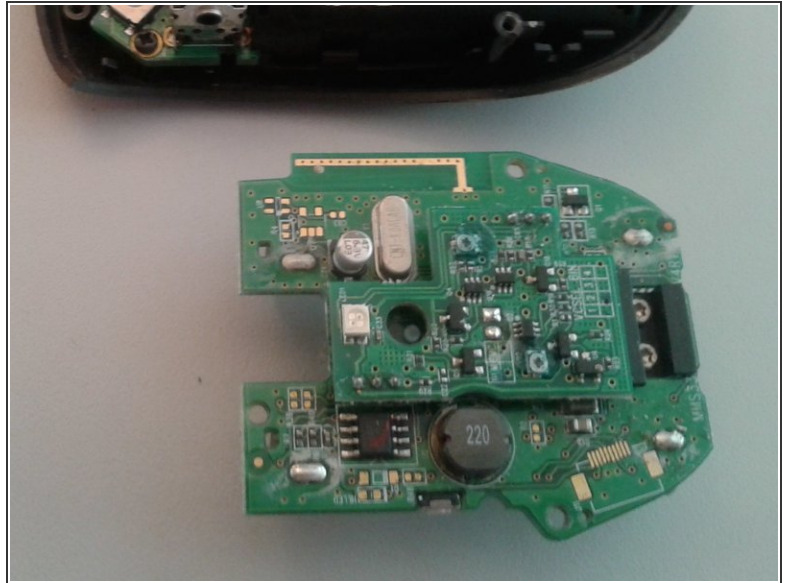
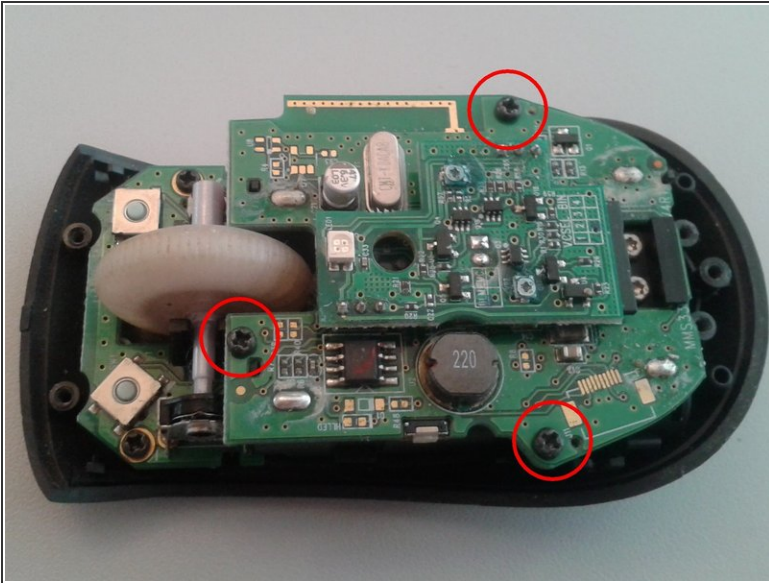
- Unscrew the four black J1 screws showed in the pic
- You'll need a J1 bit like the iFixi one I used here
- The cover will now remove without any effort

Step 6 — Remove both sides



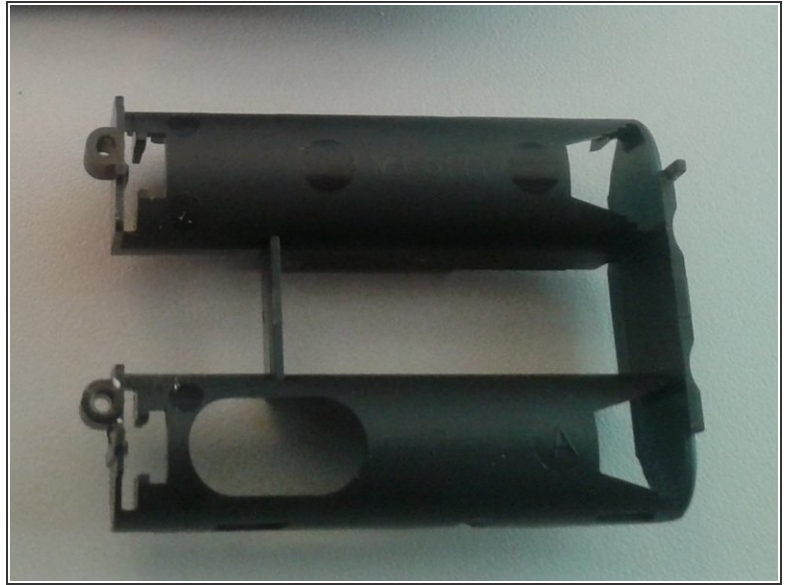
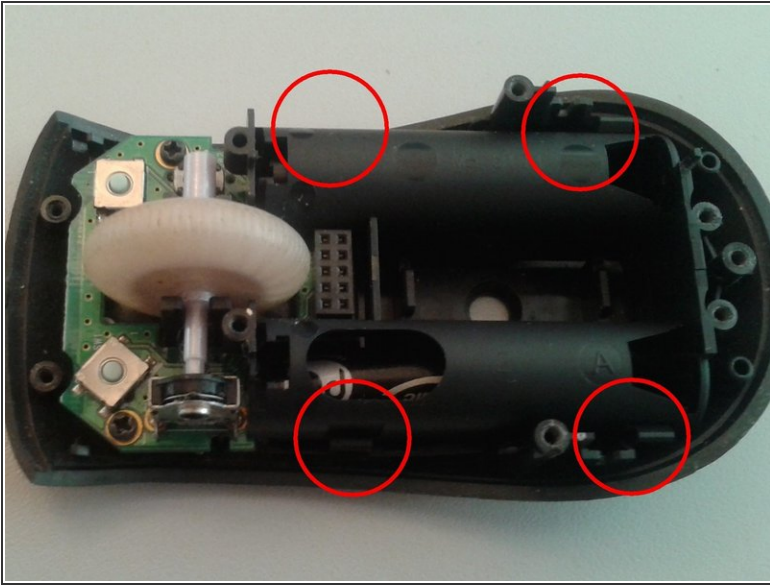
- No effort to remove both side, just raise them up vertically
- No nees to remember the position, there's only one way to put them back

Step 7 — Remove the main circuit board



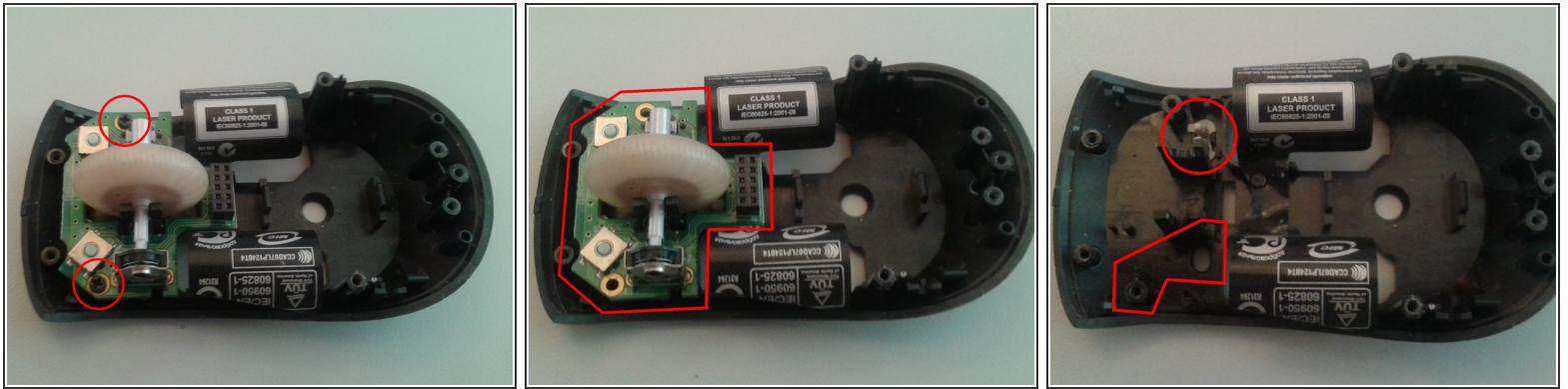
- Unscrew the three J1 black screws showed in the pic
- Gently lift up the circuit board
- You have to be careful reinserting: both the four battery connectors, and the multi plug should go in the right places: nothing difficult!

Step 8 — Remove the battery compartment



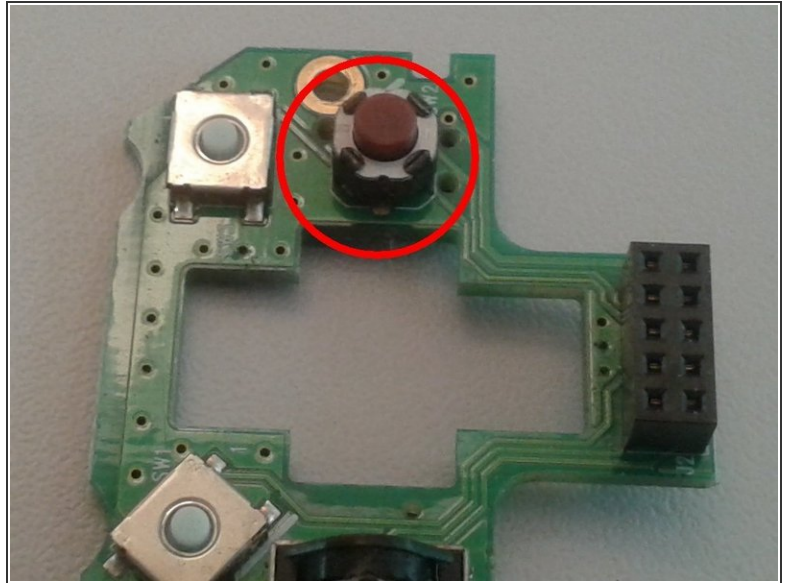
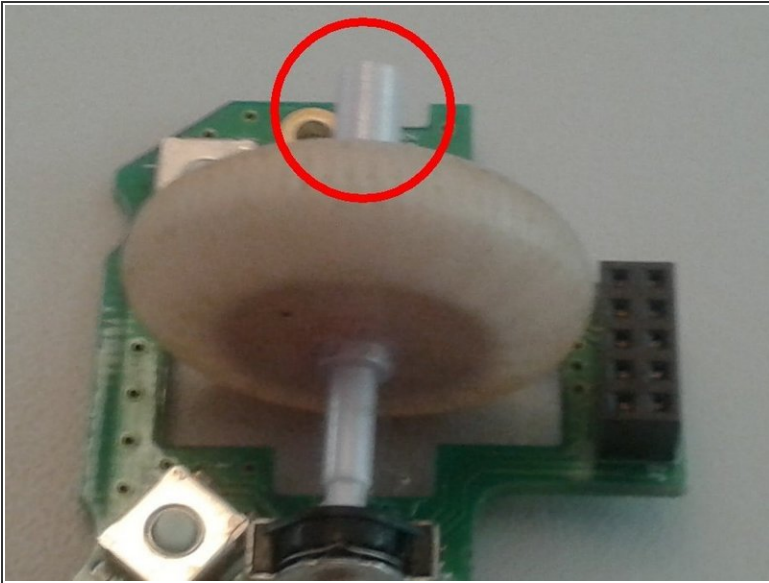
- Unclick the plastic in the four point showed up
- It's easy, once unclicked the tabs stay put, no need to hassle
- Gently lify up and put aside. Reassembling be careful to bring out the light plastic battery guides from down

Step 9 — Remove the wheel secondary circuit board



- Unscrew the two black J1 screws shown in the pic
- Simply lift up the board, see the second picture
- Be careful not to loose the bluetooth discovery button from the main plastic base underneath; it's missing in my second picture
- Forgot to snap a picture of the grey button, sorry :-)
- Reassembling be careful and check that the on-off switch showed with circle in the third picture is in the right place before proceeding with reassembly

Step 10 — Fix the microswitch



- Lift up the wheel gently from the side shown in the pic
- You can use this opportunity to deep clean the wheel, and the area
- You can see the central wheel button microswitch in the second pic
- In my case just cleaning with blowing air the switch worked! If needed you can now substitute any defective switch
- To change the switches with new one you need the appropriate tools, and a discrete ability with soldering!!

Step 11 — Reassemble



- To reassemble the mouse just follow the steps in reverse order

To reassemble your device, follow these instructions in reverse order.