



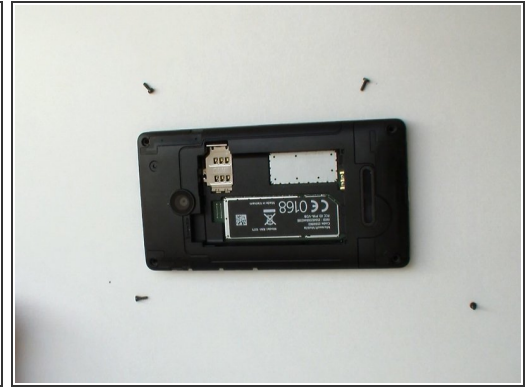
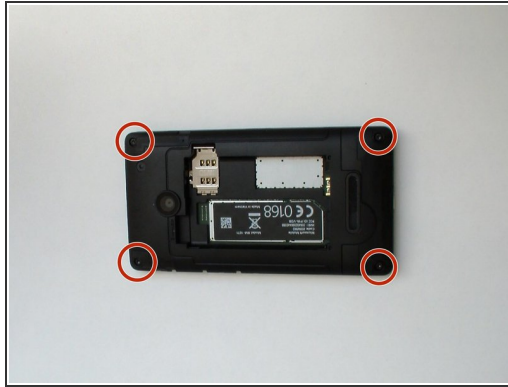
Microsoft Lumia 435 Touch screen with Frame Replacement

Written By: ZFix

TOOLS:

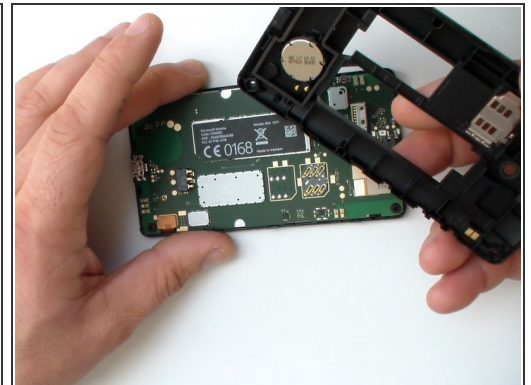
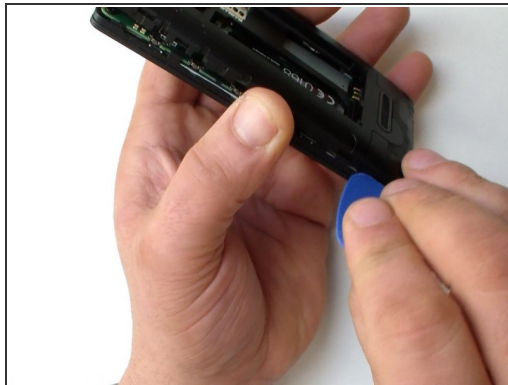
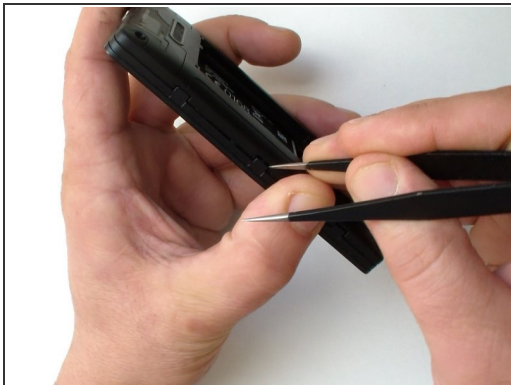
- [T6 Torx Screwdriver](#) (1)
 - [Tweezers](#) (1)
 - [iFixit Opening Picks set of 6](#) (1)
 - [Heat Gun](#) (1)
-

Step 1 — Back Cover



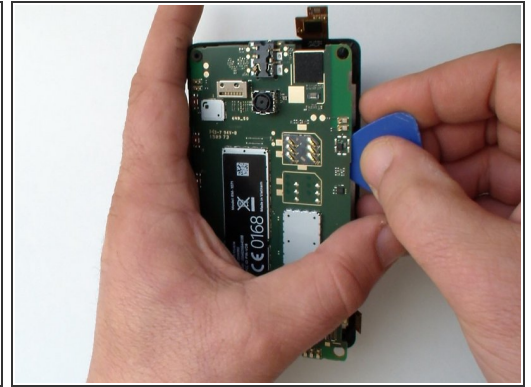
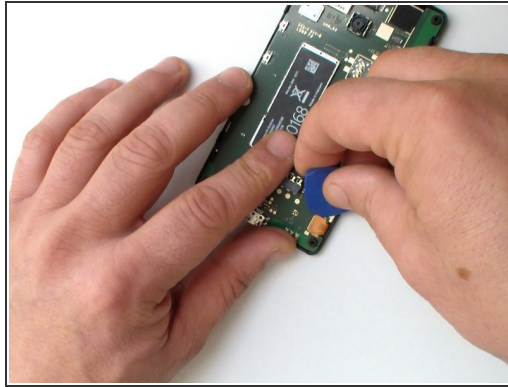
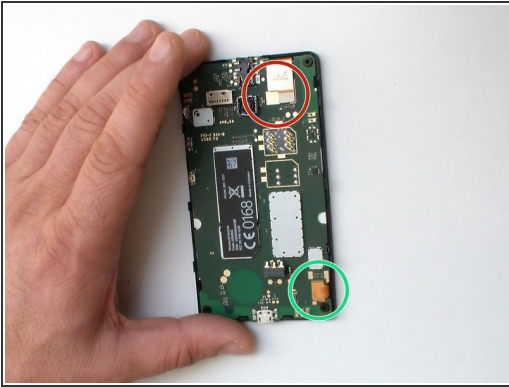
- Switch off the phone.
- Remove the battery and any inserted SIM and memory cards.
- Use a screwdriver Torx T6 and remove the 4x black screws.

Step 2



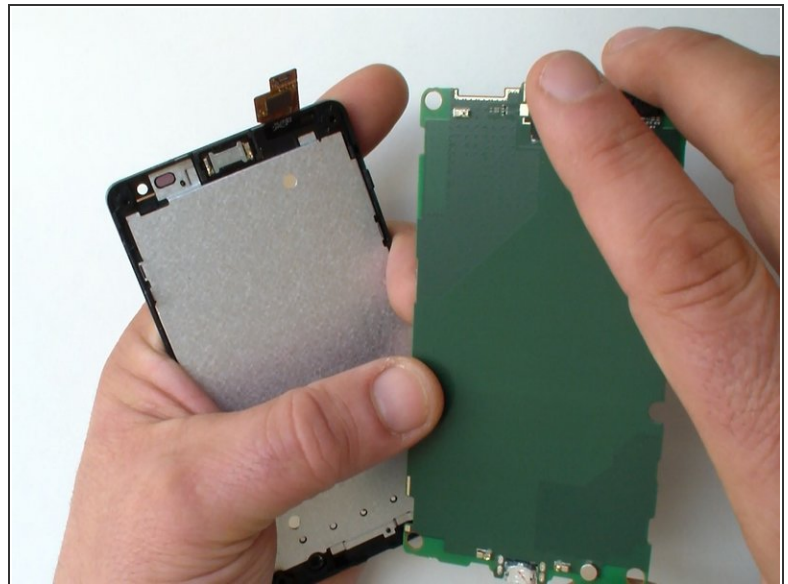
- There are several plastic locking clips hold the back cover to the frame.
- Use a tool with a sharp edge to unlock them and a plastic tool to separate the back cover.

Step 3 — Logic board



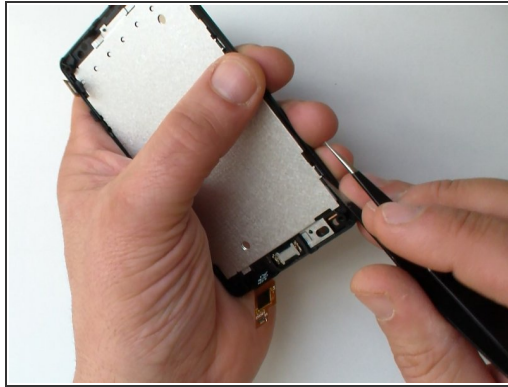
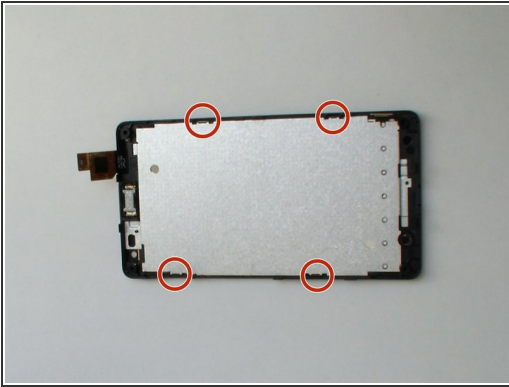
- Unhook:
 - the touch screen flex cable
 - the LCD Display flex cable
- Use a plastic tool lift up and remove the Logic board.

Step 4



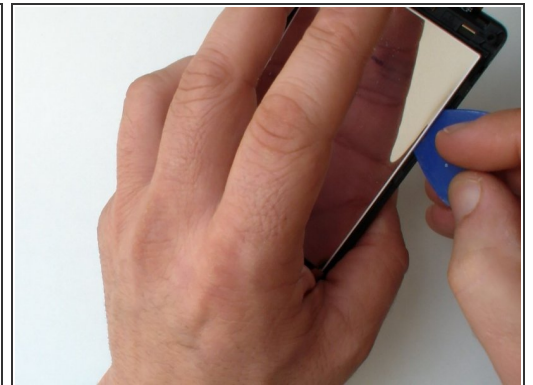
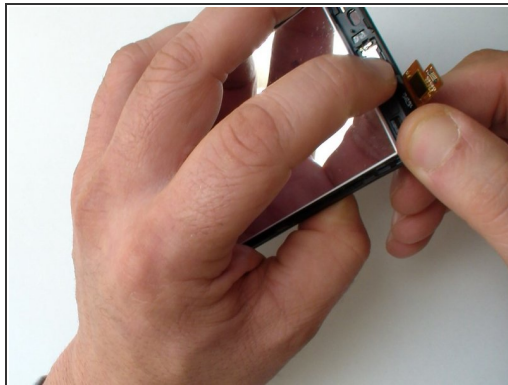
- This is the logic board / main board - a front and rear view.

Step 5 — LCD Display



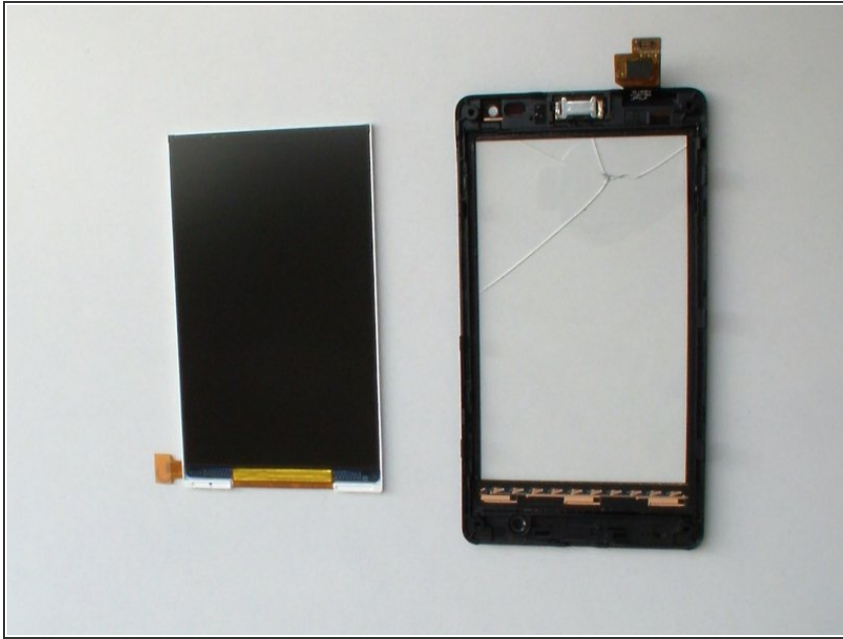
- The Display metal shield is locked to the frame by 4x locking clips.
- Use a tool with a sharp tip and carefully unlock them and remove the shield.

Step 6



- The display is stuck to the touch screen glass with a double-sided adhesive tape.
- Use a hair dryer or hot air gun and warm the glass to make the adhesive softer.
- ⚠ Distort the frame a little and use a thin plastic tool to separate the display from the frame.

Step 7



- The display is very fragile, do the separation very carefully.

To reassemble your device, follow these instructions in reverse order.