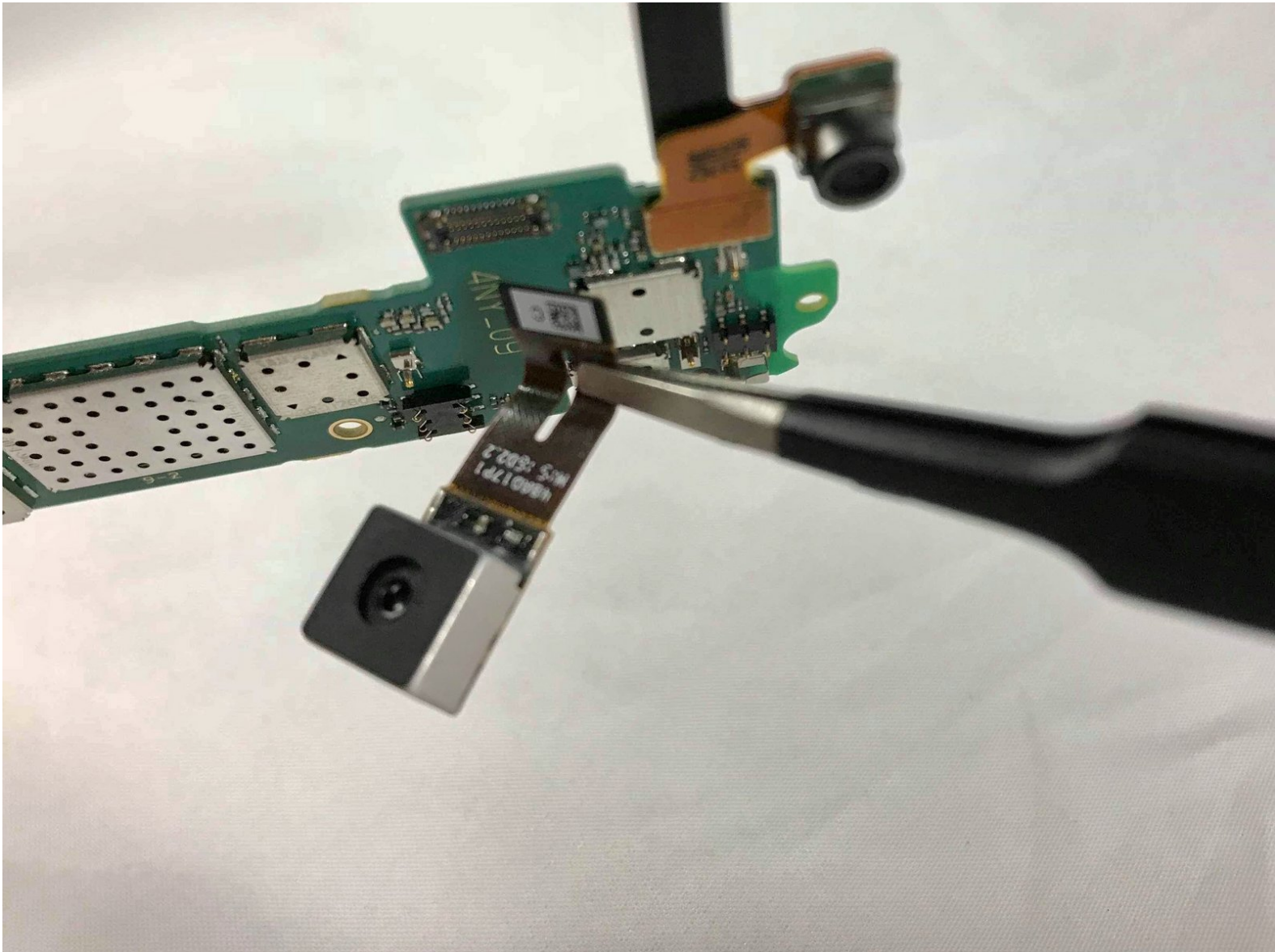




Microsoft Lumia 640 XL Rear Facing Camera Replacement

Step by step instructions on how to replace the rear facing camera in the Microsoft Lumia 640 XL.

Written By: Madelyn Kolterman



INTRODUCTION

This guide will show you how to remove and replace the battery in the Microsoft Lumia 640 XL.



TOOLS:

- [Spudger](#) (1)
 - [T3 Torx Screwdriver](#) (1)
 - [E6000 Adhesive Glue](#) (1)
 - [Tweezers](#) (1)
-

Step 1 — Battery



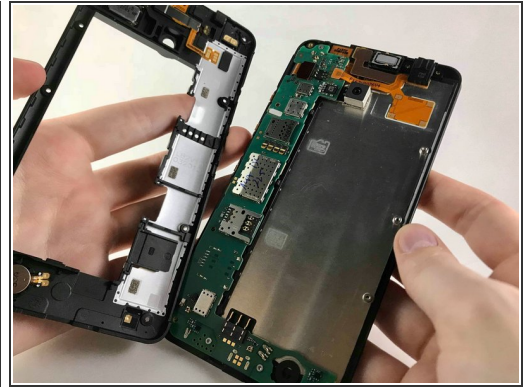
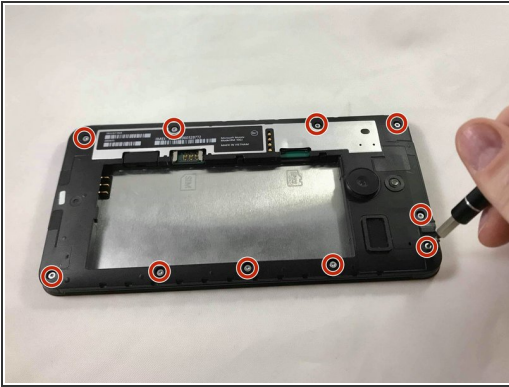
- Place left palm on screen and right palm on the back.
- Press down with fingertips and pull to separate the back from the screen.
- ⓘ You may hear cracking and popping.

Step 2



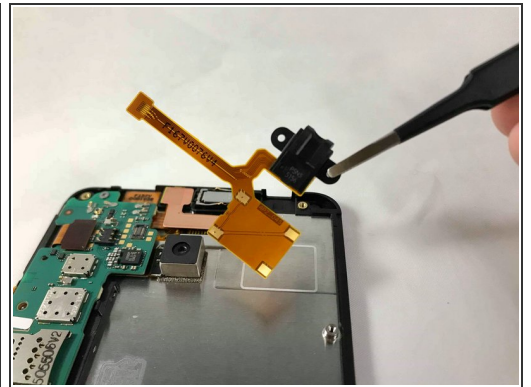
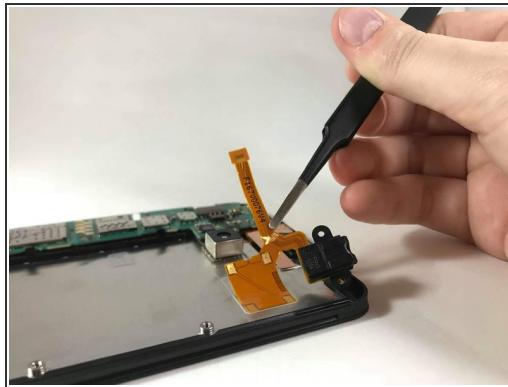
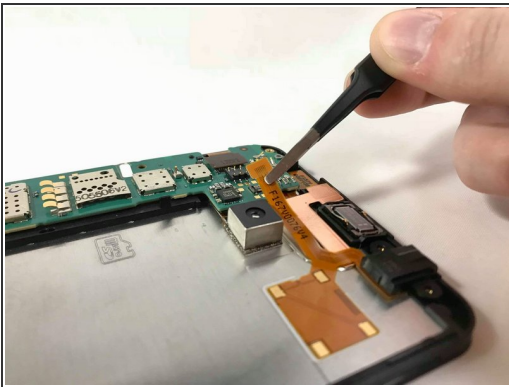
- Lift the battery away from the phone with the flat side of a spudger.
- ⚠ Be careful not to damage the battery.

Step 3 — Headphone Jack



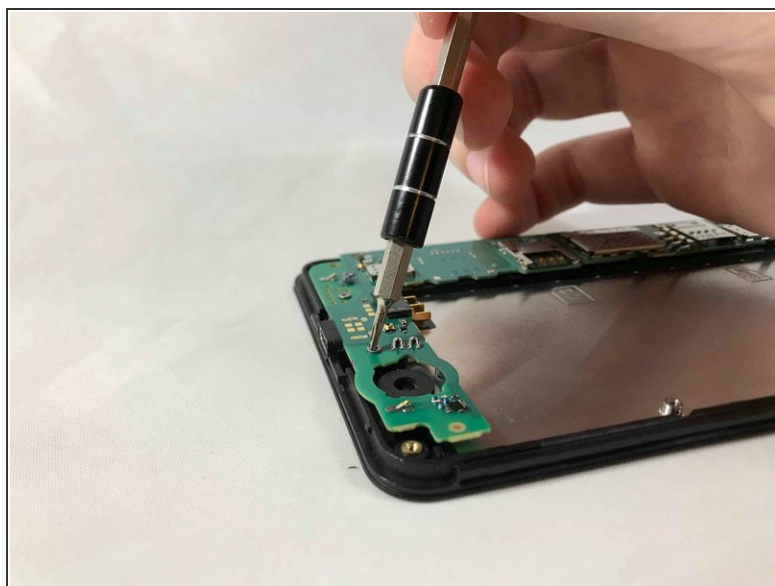
- Remove all ten T3, 4.09 mm screws.
- Lift mid-frame assembly from phone with flat side of a spudger.

Step 4



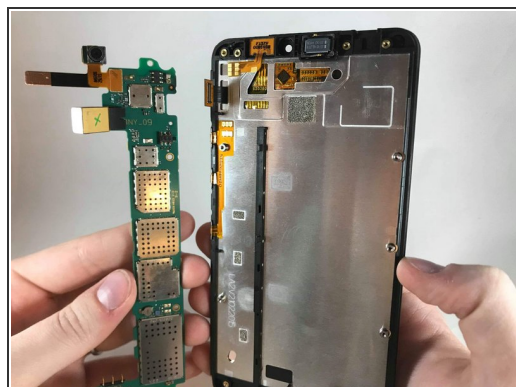
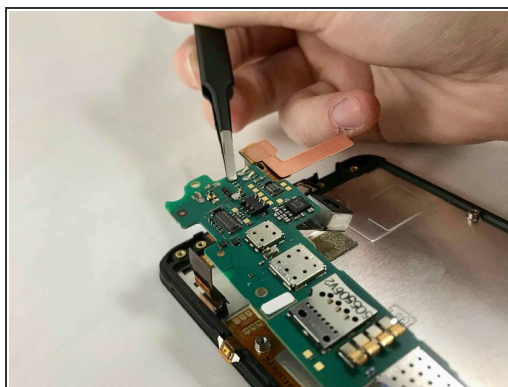
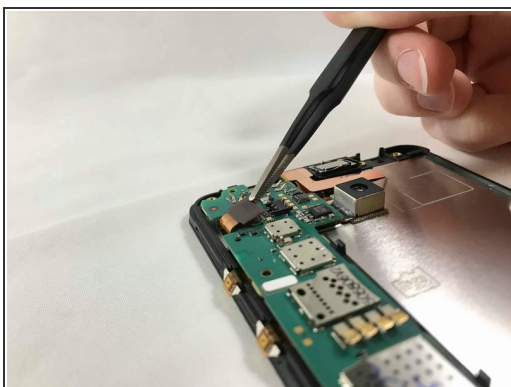
- Lift and peel connector away from phone using tweezers.
- i** To re-attach you may need E6000 Adhesive Glue.

Step 5 — Motherboard



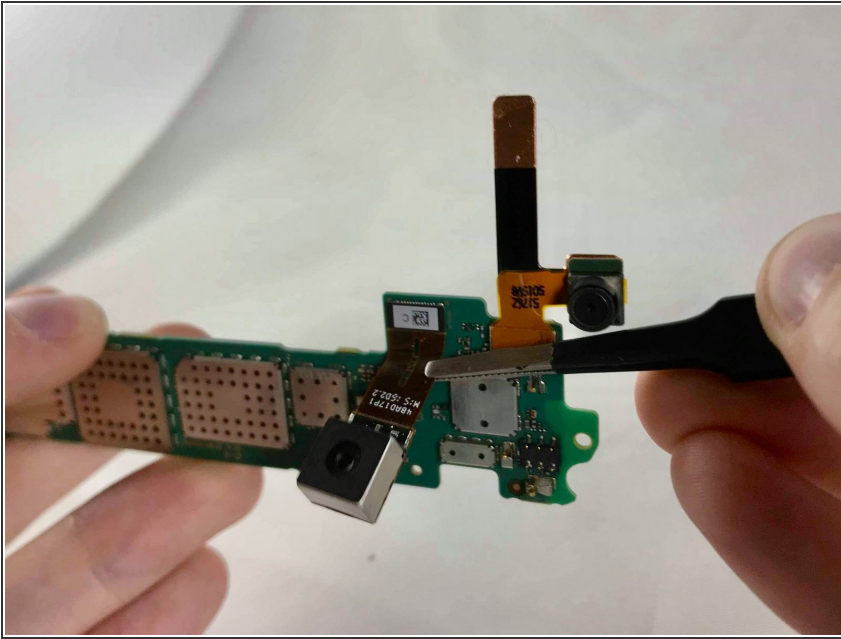
- Remove all three T3, 2.66 mm screws.

Step 6



- Lift off connector with tweezers.
- Lift motherboard off with tweezers and pull away with fingers.

Step 7 — Rear Facing Camera



- Disconnect the rear facing camera from the motherboard with tweezers.

To reassemble your device, follow these instructions in reverse order.