



Microsoft Surface 2 Volume Control Replacement

In this guide, we will show how to replace the volume control button in the Microsoft Surface 2.

Written By: oluchianya



INTRODUCTION

If your volume control button has been getting stuck or malfunctioning, it is very likely that it needs to be replaced. This guide is a step by step process on how to go about fixing it.

TOOLS:

- [Screwdriver](#) (1)

T3

- [Spudger](#) (1)

plastic

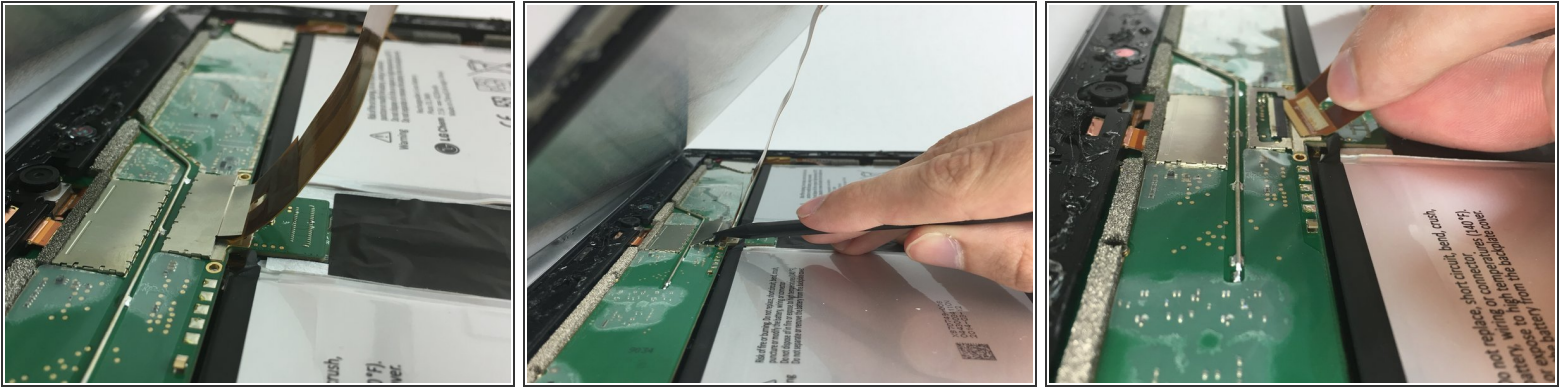
- [Magnetic Project Mat](#) (1)
-

Step 1 — Screen



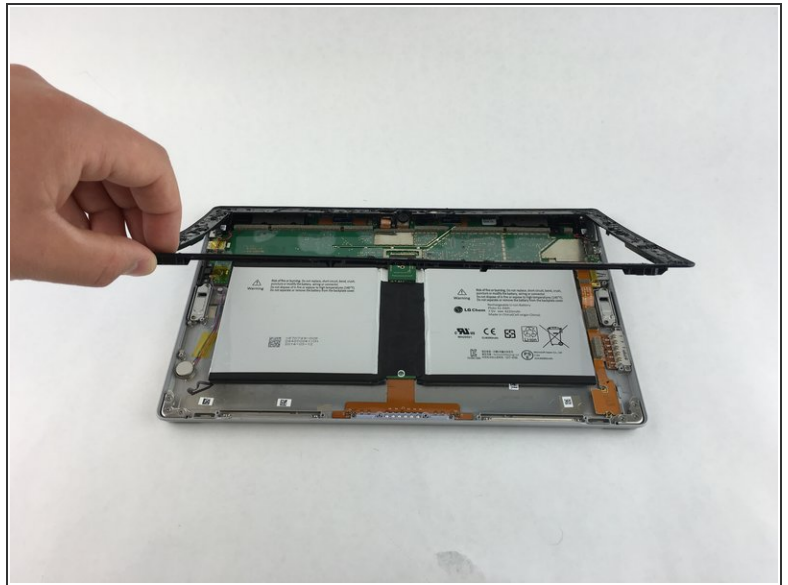
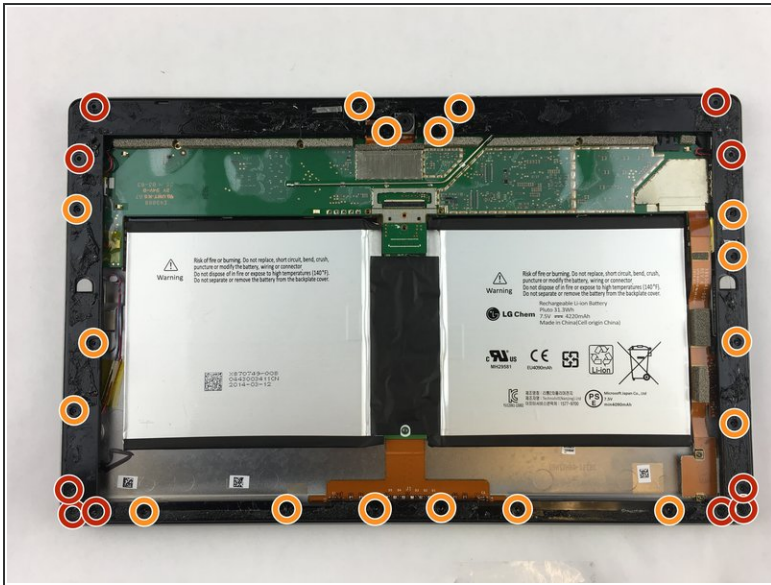
- Begin by using a heat gun or the iOpener (This will take longer.) to melt the adhesive all around the outer edge of the screen.
- ⚠ Avoid holding the heat gun too close to the Microsoft Surface 2 so as to not cause any unwanted warping.
- ⚠ Avoid touching the metal end of the gun. It will be very hot and can burn you.
- Insert the opening picks just under the screen and black edging. Be sure to place them evenly on each side.
- Using the gap created by the picks, slowly pry the screen from the body of the Microsoft Surface 2 with a plastic opening tool. Pry as uniformly as possible.

Step 2



- ① Once the screen is free from the body, there will be a single ribbon cable connecting the screen to the motherboard.
- Use a plastic spudger to pry the retaining clip away from the display cable.
- ① The ribbon cable may be glued to the motherboard.
- Carefully pull the ribbon cable from its socket on the motherboard.

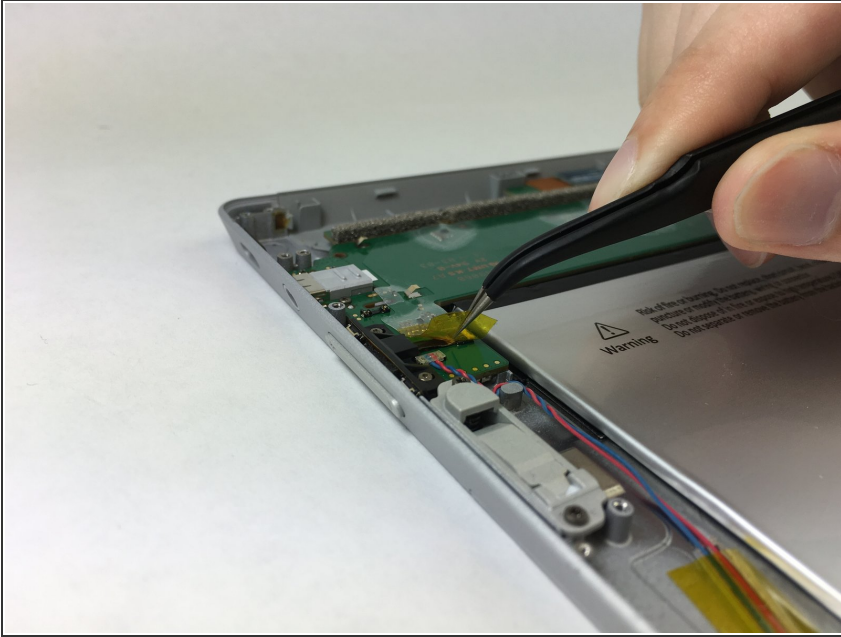
Step 3 — Volume Control



 Work close to Magnetic Project Map to avoid losing screws.

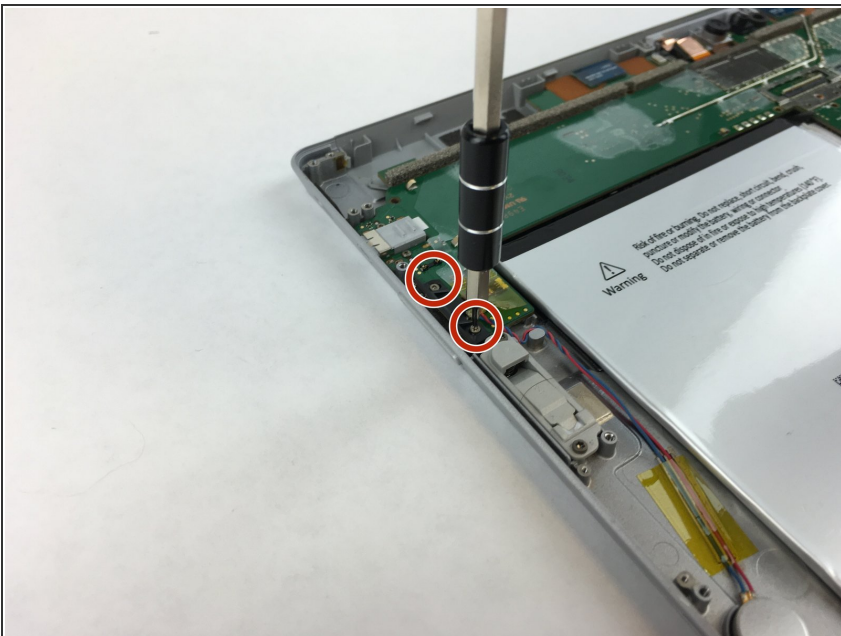
- Remove ten 3.45 mm T3 screws from the corners of the black plastic bezel.
- Remove the remaining seventeen 4.4 mm T5 screws from the perimeter of the bezel.
- Once all screws have been removed, lift and remove the bezel from the rest of the device.

Step 4



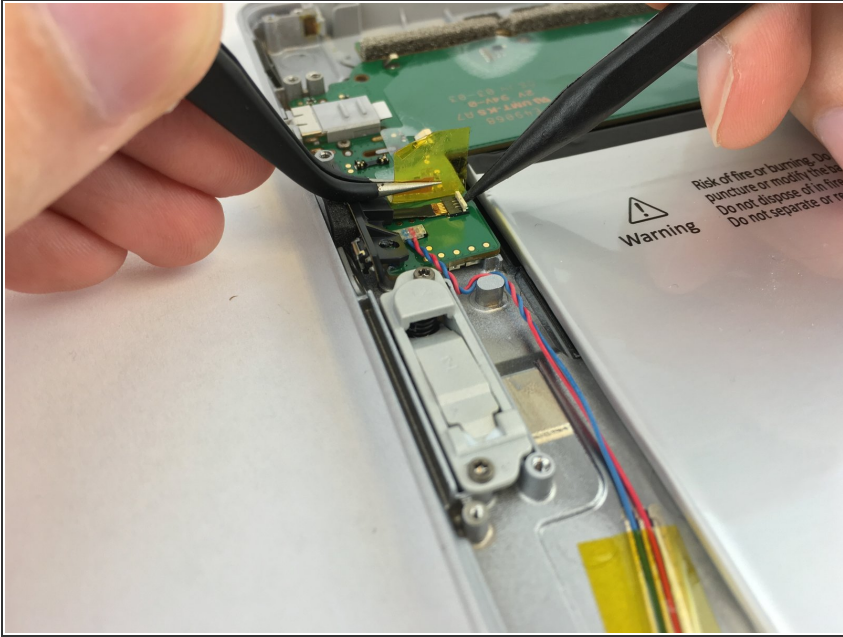
- Gently peel off the yellow plastic tape using a pair of tweezers.

Step 5



- Remove the two 1.70 mm T3 screws from the volume control switch.
- ☑ Work close to Magnetic Project Map to avoid losing screws.

Step 6



- Use a spudger to lift up the retaining flap on the volume control cable ZIF connector.
- ⚠ Make sure you are prying up on the retaining flap, not the connector itself.

Step 7



- Now that the volume control switch is loose, pull it gently away from the motherboard.
- ⓘ No force is needed to plug in or remove the ribbon cable.

To reassemble your device, follow these instructions in reverse order.