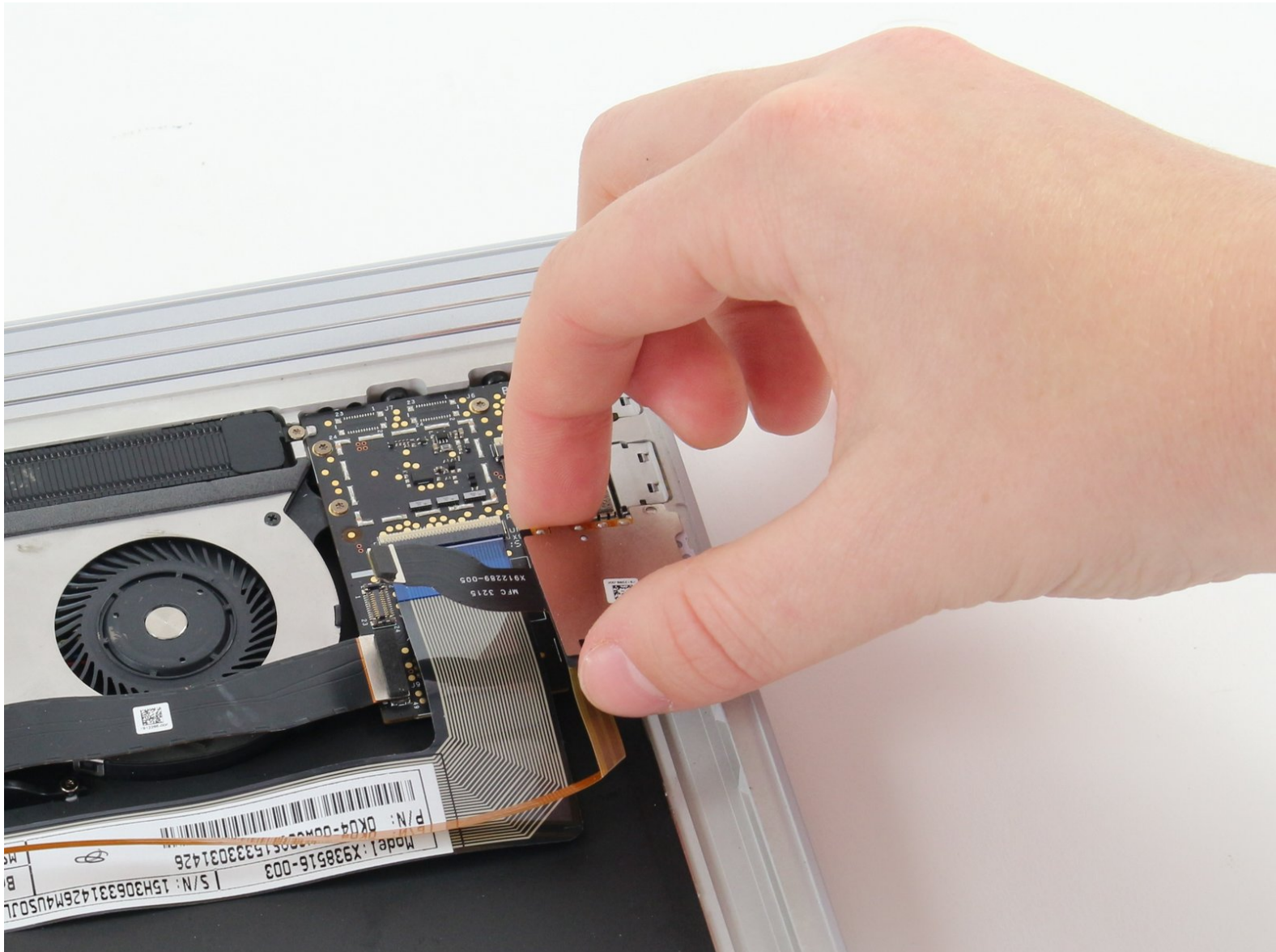




# Microsoft Surface Book Keyboard SD Card Reader Replacement

Replace your malfunctioning SD card reader in order to read SD cards again.

Written By: Natalie Weisenburger



---

## INTRODUCTION

The Realtek RTS5314 SD card reader, located near the two USB ports, is easy to remove and replace. In order to remove the SD card reader, you simply need to remove the back panel and then you are able to work on the SD card reader. Make sure that you have a place to hold onto the tiny screws as you remove them.



### TOOLS:

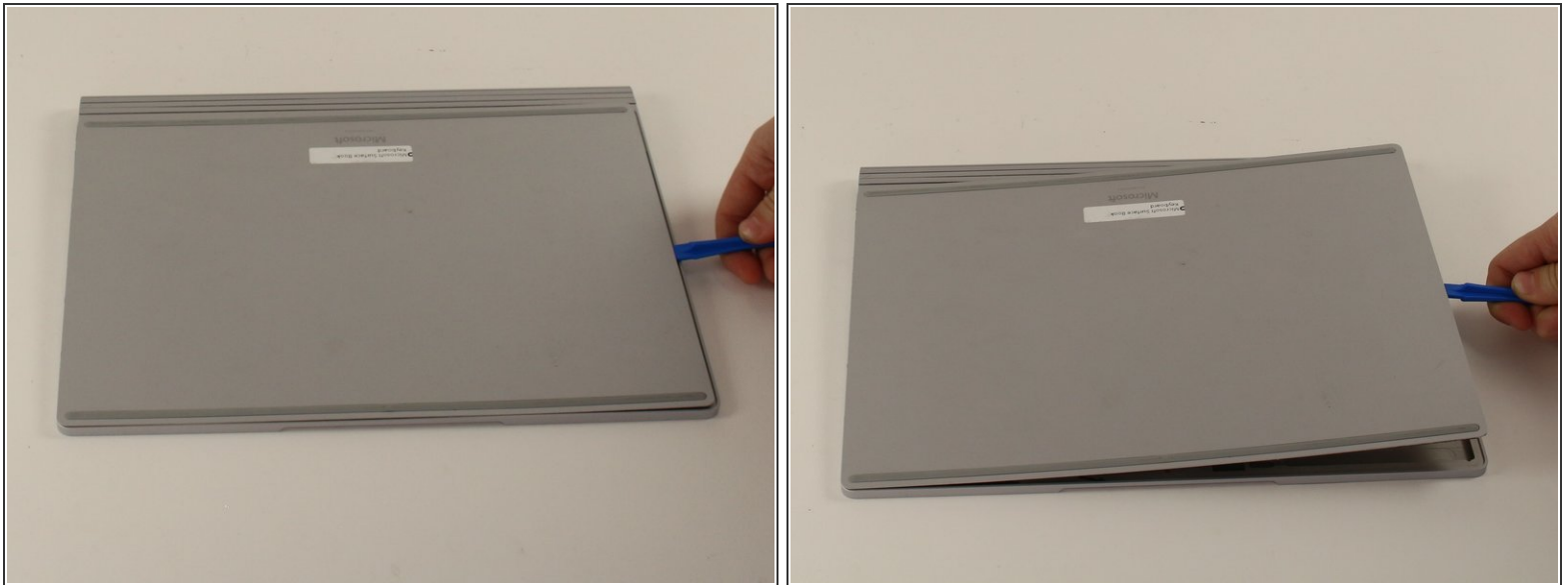
- [iFixit Opening Tools](#) (1)
  - [T3 Torx Screwdriver](#) (1)
-

## Step 1 — Back Panel



- Flip the keyboard over so you can see the back panel.

## Step 2



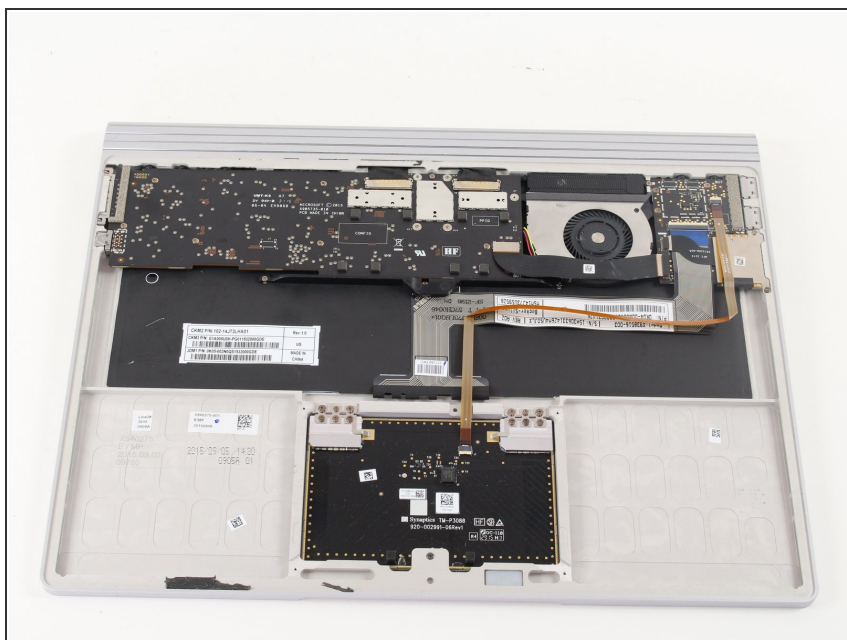
- Insert the plastic opening tool in the crevice between the panel and the keyboard.
- Apply some pressure and lift up so that the back panel is pried away from the keyboard.
- ⓘ The panel is glued down on the inside so this may require some force to lift away the panel.
- Continue to lift until the panel is completely separated from the keyboard.
- ⓘ The panel is still attached to the keyboard by a ribbon cable so only lift the panel a few inches.

## Step 3



- Lift the panel away with the ribbon cable still attached and set aside the panel so that you can work on other components.

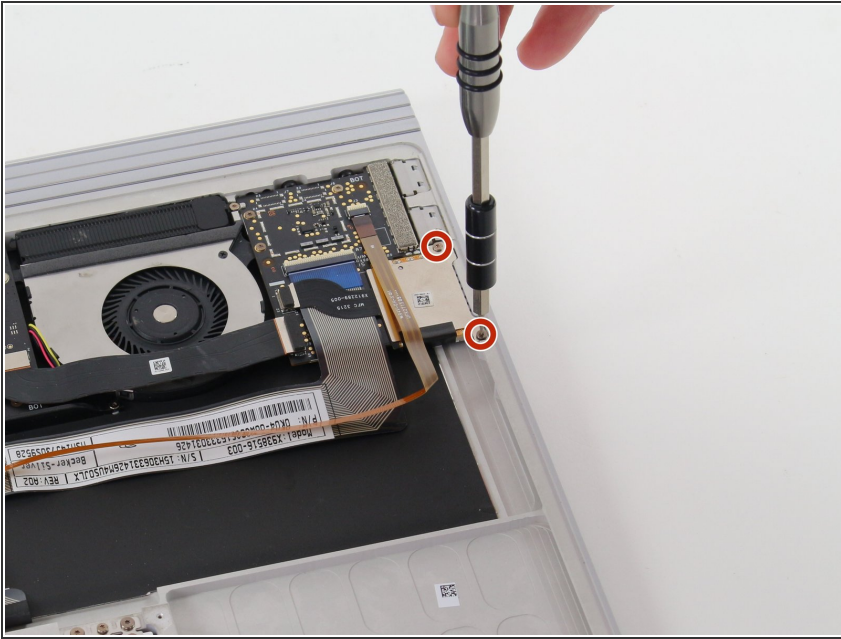
## Step 4 — SD Card Reader



- Orient your keyboard with the internals facing up and the USB ports on the right.

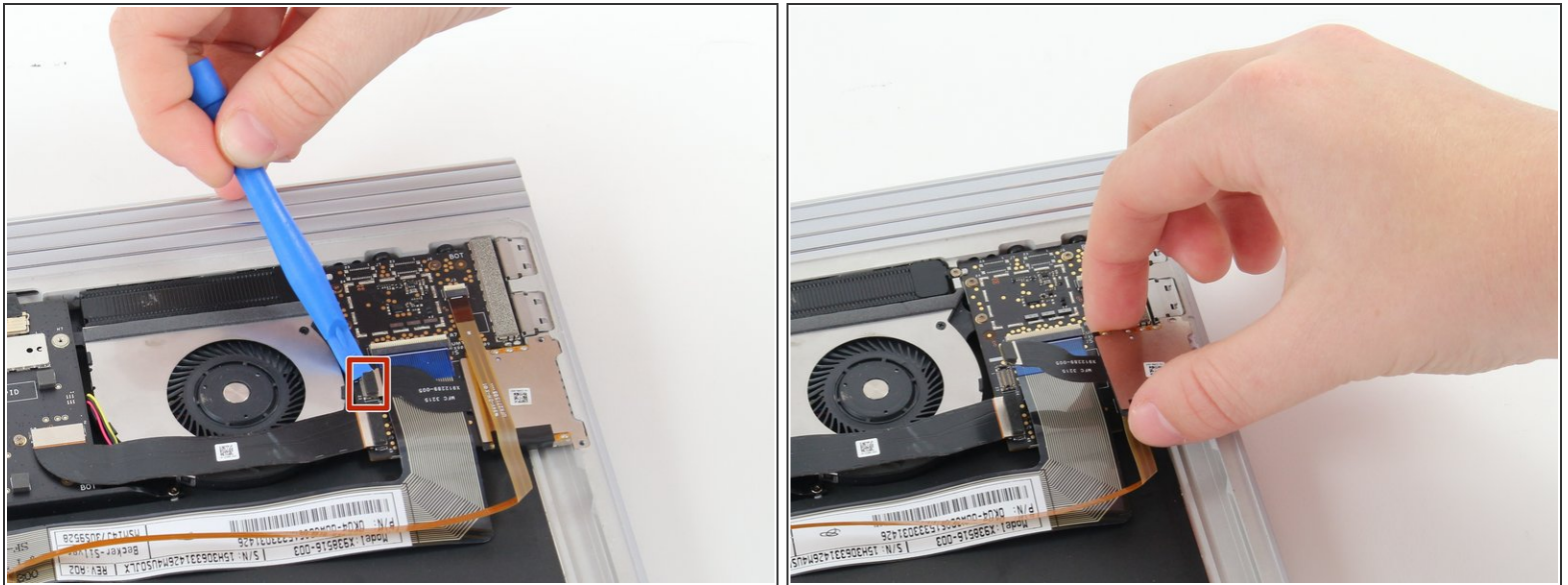


## Step 5



- Use the T3 screwdriver to remove the two 4 mm screws on the right side of the SD Card Reader.

## Step 6



- Remove the black ribbon cable tab on the SD card reader from the chip with a plastic opening tool. Place the tool underneath the tab and pry it off.
- ⓘ Removing this tab can be a little difficult. Be sure that you have a good angle and do not get discouraged if removing the tab takes you multiple tries.
- Lift the SD card reader away from the keyboard to replace it.

To reassemble your device, follow these instructions in reverse order.