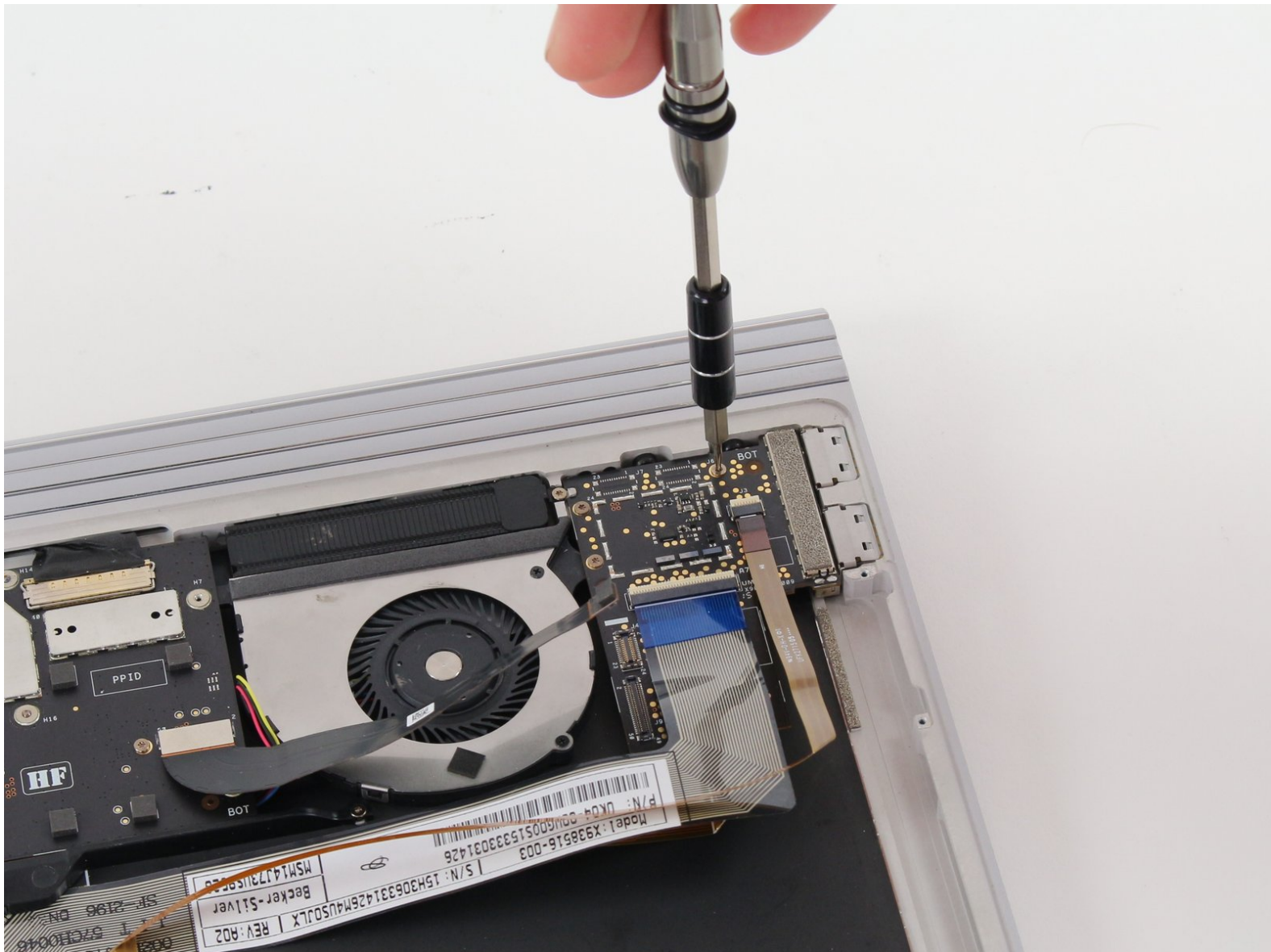




# Microsoft Surface Book Keyboard USB Port Replacement

Replace your faulty USB Port in order to read USB devices again.

Written By: Natalie Weisenburger



---

## INTRODUCTION

You will learn how to replace the USB 3.0 port hub with a new one. This will require you to remove the back panel. It is not necessary to remove the SD Card to get to the USB card.

The USB port is a way to recognize devices on your laptop. If it is damaged, you no longer have the option to read devices via a cord.

---

### TOOLS:

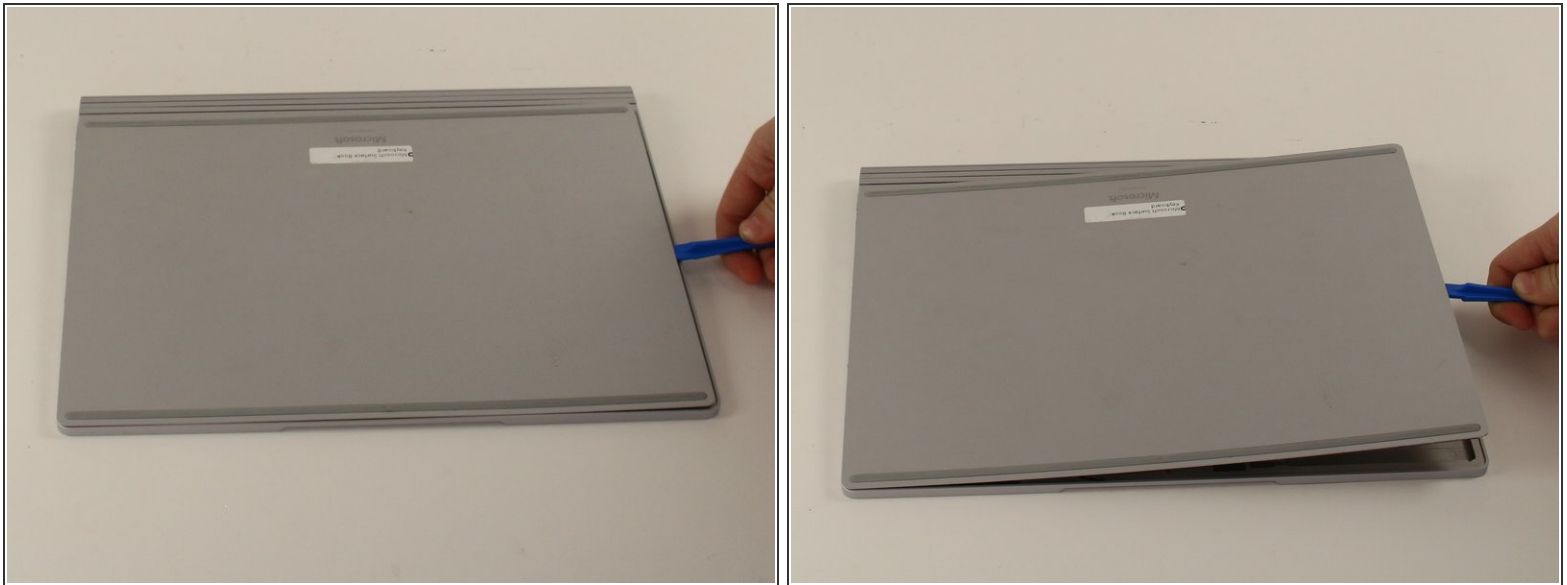
- [iFixit Opening Tools](#) (1)
  - [T3 Torx Screwdriver](#) (1)
-

## Step 1 — Back Panel



- Flip the keyboard over so you can see the back panel.

## Step 2



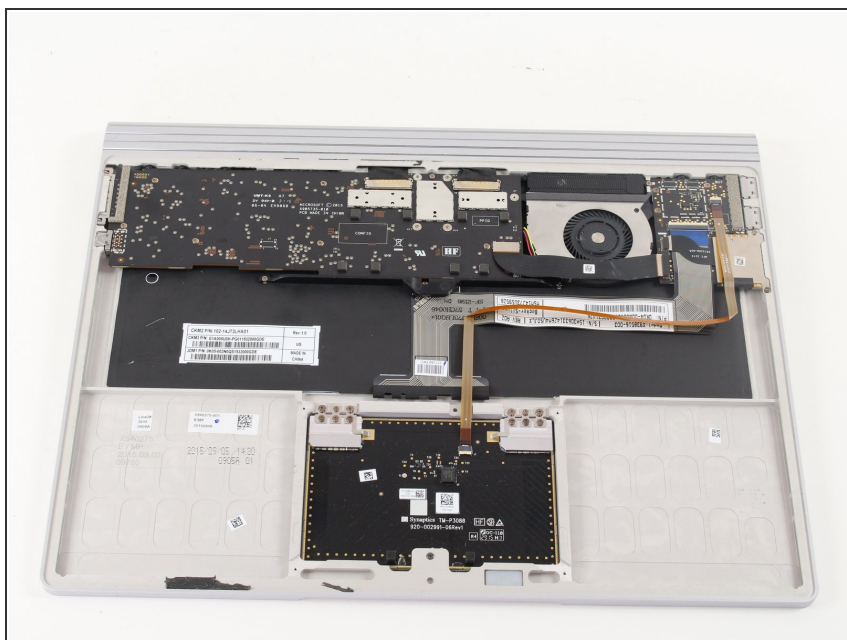
- Insert the plastic opening tool in the crevice between the panel and the keyboard.
- Apply some pressure and lift up so that the back panel is pried away from the keyboard.
- ⓘ The panel is glued down on the inside so this may require some force to lift away the panel.
- Continue to lift until the panel is completely separated from the keyboard.
- ⓘ The panel is still attached to the keyboard by a ribbon cable so only lift the panel a few inches.

## Step 3



- Lift the panel away with the ribbon cable still attached and set aside the panel so that you can work on other components.

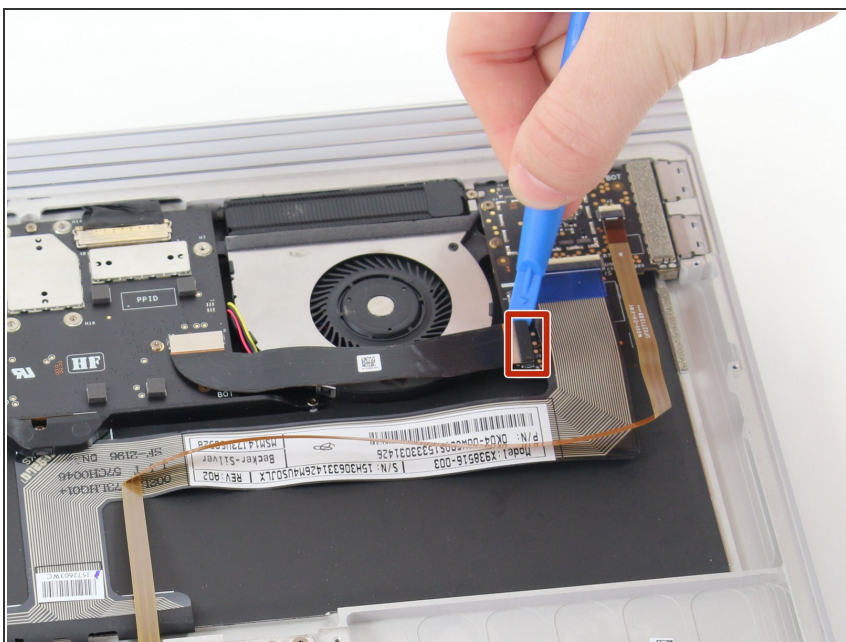
## Step 4 — USB Port



- Orient your keyboard with the internals facing up and the USB Port on the right.

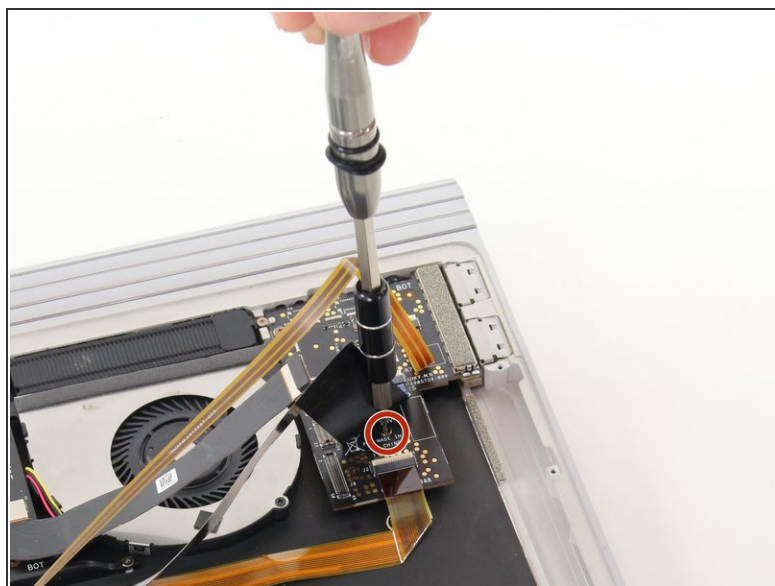
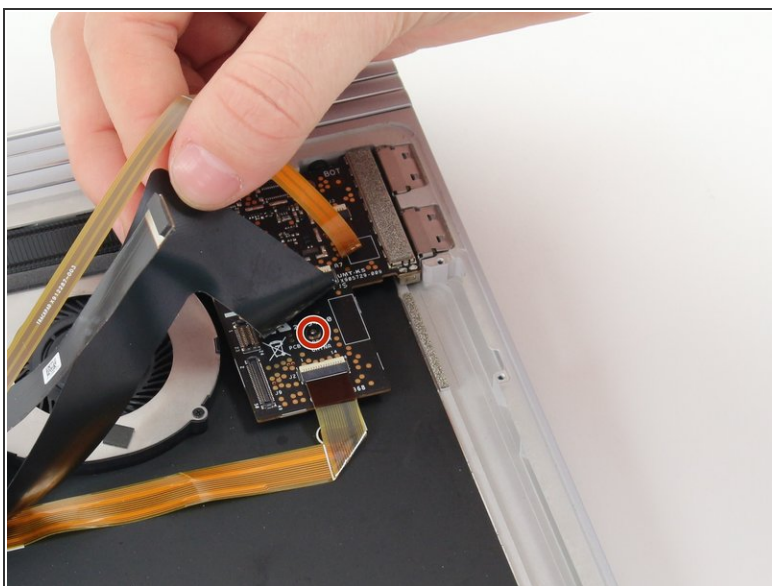


## Step 5



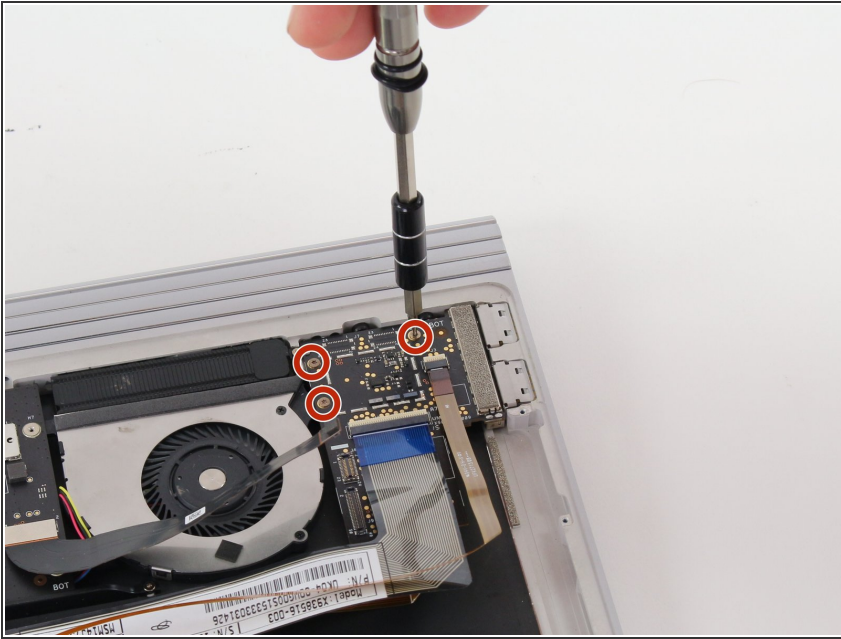
- Use a plastic opening tool and remove the tab from the USB board

## Step 6



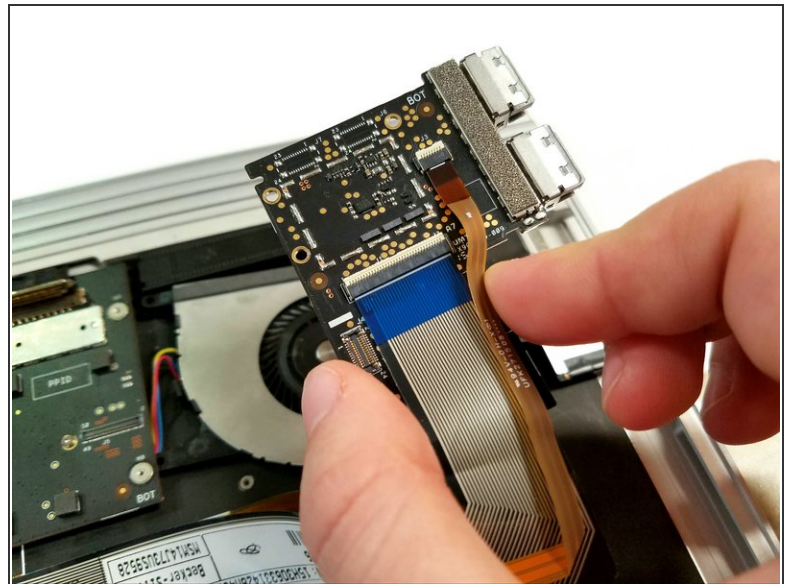
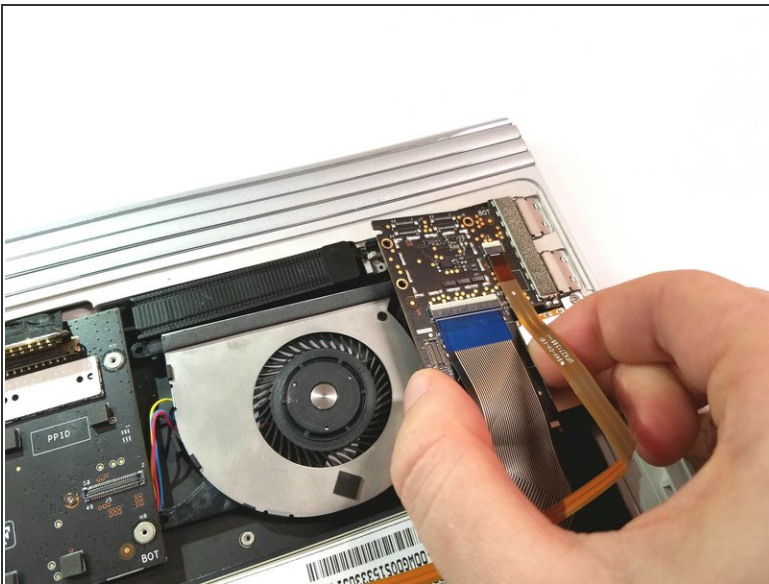
- Lift up the black and gold wires and find the screw hidden there.
- Use the T3 Torx Screwdriver and remove the four mm screw.

## Step 7




- Use the T3 Torx Screwdriver to remove the remaining three 4 mm screws.

## Step 8



- Wiggle the USB Port board away from the keyboard.

 This may require some force.

To reassemble your device, follow these instructions in reverse order.