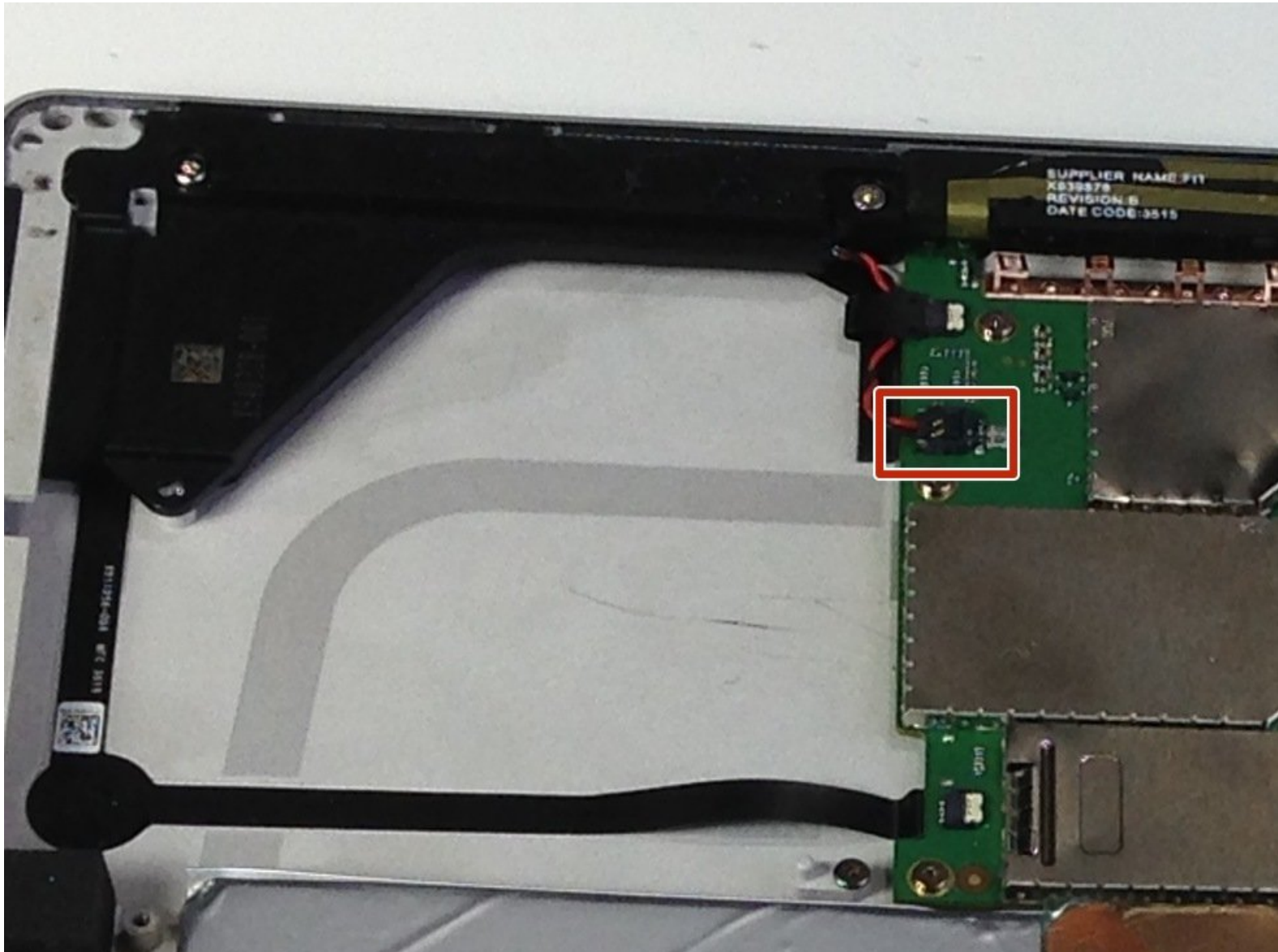




Microsoft Surface Pro 4 Left Speaker Replacement

Removal and replacement of Microsoft Surface Pro 4 left speaker.

Written By: Andrew Prater



INTRODUCTION

This guide will show you how to replace the left speaker of the Microsoft Surface Pro 4 left speaker. The power and volume controls are integrated into this speaker, so removing this speaker will be necessary to replace either of those buttons.



TOOLS:

- [iFixit Opening Picks set of 6](#) (1)
- [Small Plastic Spudger](#) (1)
- [Tesa 61395 Tape](#) (1)
- [Heat Gun](#) (1)
- [Isopropyl Alcohol](#) (1)
- [iOpener](#) (1)
- [iFixit Opening Tools](#) (1)
- [Suction Handle](#) (1)
- [T3 Torx Screwdriver](#) (1)
- [T4 Torx Screwdriver](#) (1)
- [T5 Torx Screwdriver](#) (1)



PARTS:

- [Surface Pro 4 Left Speaker](#) (1)

Step 1 — Display



- ⚠ Before you begin, discharge the Surface Pro's battery below 25%. A charged lithium-ion battery can catch fire and/or explode if accidentally damaged during the repair.
- ⚠ Make sure the device is turned off before you start working on it.
- If your display is cracked, cover it with strips of packing tape to contain any glass shards and prevent injury.

Step 2



- ⓘ The display is strongly glued to the frame of the device.
- To remove the display, first soften the adhesive by applying heat. You can use a heat pad, heat gun, or iOpener. In a pinch, a hair dryer can also work.
- ⚠ Be careful when using a heat gun, as too much heat can permanently damage the display.
- Steadily and evenly heat the perimeter of the display until it's too hot to touch, and try to maintain that temperature for several minutes—but don't overheat it, or you may damage the display.

Step 3



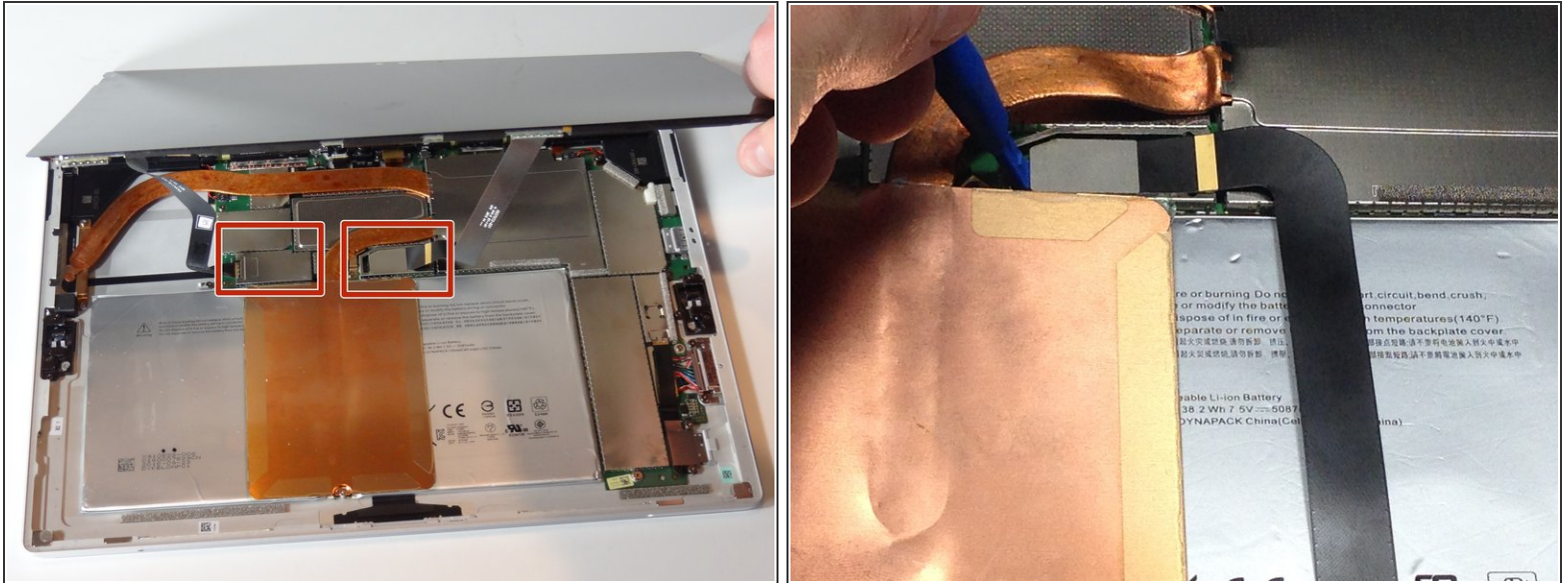
- Use a suction cup or an iSclack to pull up on the glass and create a slight gap between the glass and the metal frame.
 - ⓘ If your display is badly cracked, a suction cup may not adhere. It may help to first cover the display with a layer of packing tape. Alternatively, you can superglue your suction cup to the display.
- Insert an opening pick into the gap.
 - There are tabs on the upper right side and upper left side where it is easier to get a tool under the display.
- Slide an opening pick around the sides and bottom of the display to cut the adhesive. Apply more heat as needed.
 - ⚠ The tape is much thinner on the bottom edge than the other three sides. Do not push the tool in too far or you will damage the screen permanently.
 - ⚠ Work carefully—the glass is thin and will crack easily if you try to force it.
- Separate the top edge last. There are antennas on both sides, so be careful not to damage them. If needed, you can use a bit of isopropyl alcohol to help weaken the adhesive.

Step 4



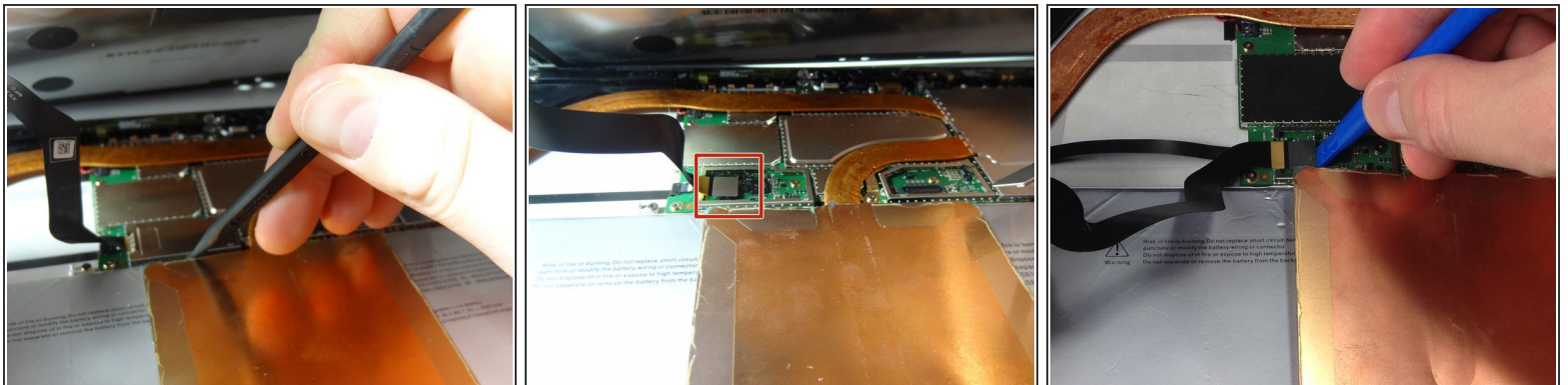
- Attach a suction cup to the front of the display.
- Using the suction cup, pull the display and base apart. You may need to hold the base in position with your hands.
- ⓘ It is usually better to place the suction cup on the left or right side of the screen, rather than in the center. This provides more leverage when removing the screen.

Step 5



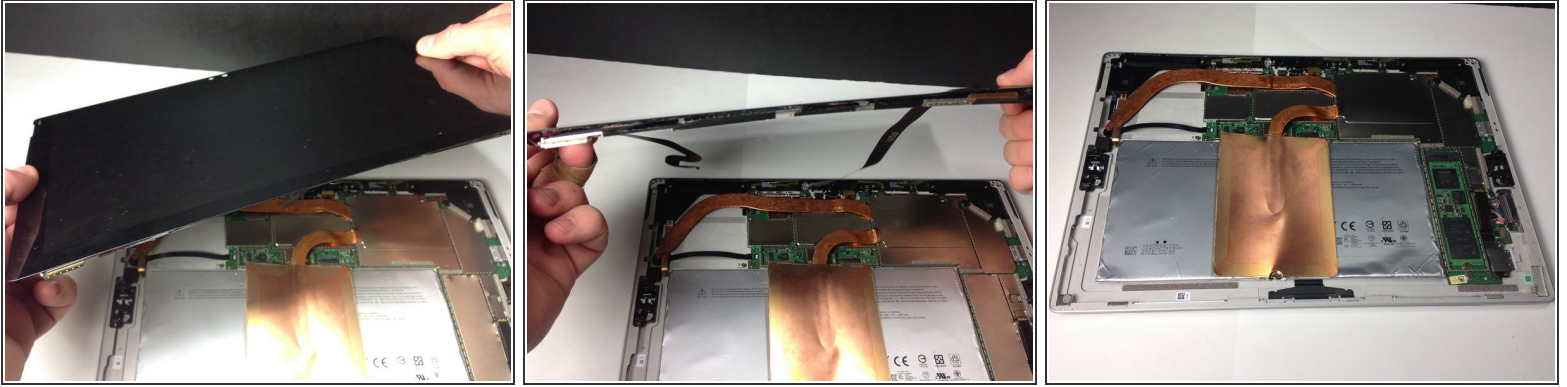
- There are two display cables connecting the body to the display.
- Disconnect the cable on the right by putting a plastic opening tool under the edge of the connector and prying it up.

Step 6



- The connection for the strip on the left is covered by a lightweight metal casing. Pry around the edges of this case with a plastic spudger. Once it is loose, pull it off.
- Unplug the connection with a plastic opening tool.

Step 7



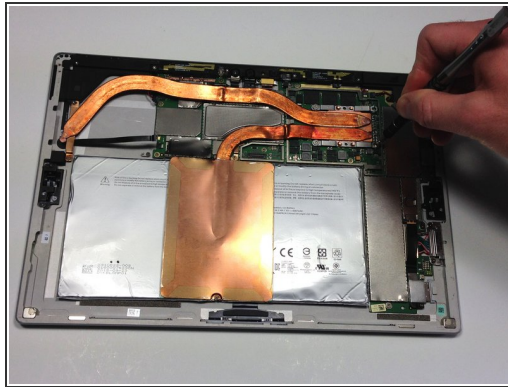
- The display should now be free of the body of the Surface Pro. Lift it up and away from the rest of the device.
- ✦ Before installing a new display, check it carefully to see if any parts need to be transferred over from the back of the old display to the new display. In particular, you may need to transfer over the [NTrig board in the corner](#) by disconnecting the two attached ribbon cables and using heat and gentle prying to carefully separate the glue securing the board.
- ✦ To replace the adhesive securing the display, carefully remove any old adhesive from both the device and the back of the display. Clean and prep the surface with isopropyl alcohol and a lint-free cloth, swiping the cloth in one direction (not back and forth). Apply a strong double-sided tape, such as 2 mm [Tesa 61395](#).

Step 8 — Heat Sink



- Both sections of the heat sink are connected to the motherboard via a panel which is covered by a metal casing.
- Remove the casing by prying around the edges and then lifting the entire piece once it is loose.

Step 9



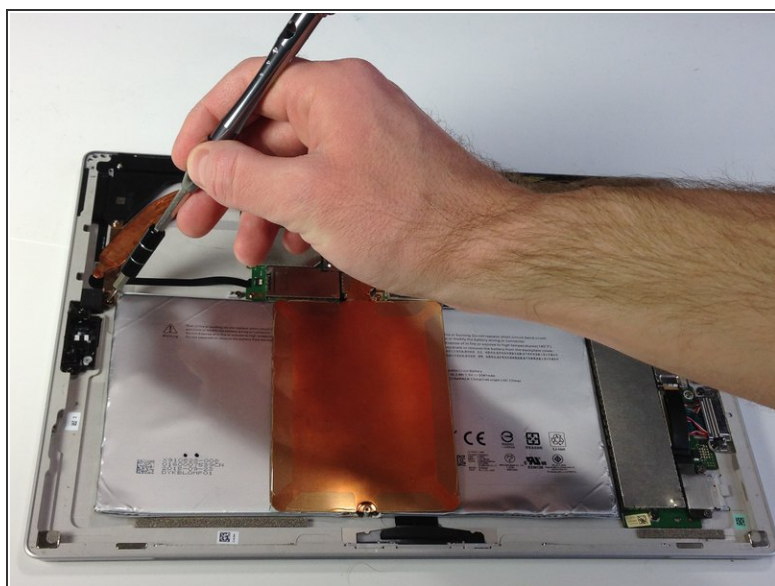
- Remove the four 1.5mm Torx T4 screws holding the main body of the heat sink to the motherboard

Step 10



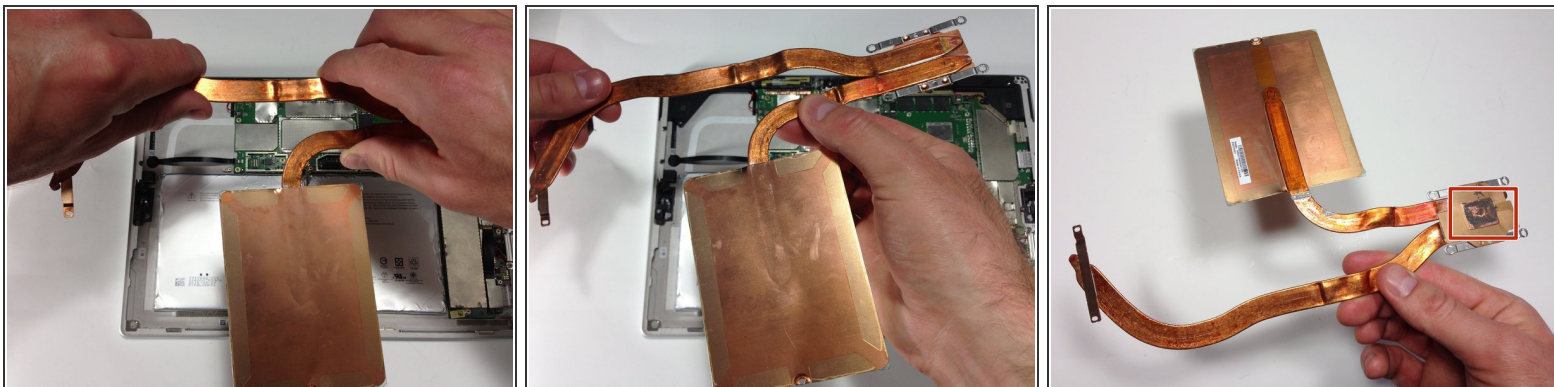
- Remove the 1.5mm Torx T3 screw holding the copper plate near the bottom of the device.

Step 11



- Remove the 1.5mm Torx T4 screw holding the heat sink tubing to the frame of the device.
- Remove the 3.0mm Torx T4 screw.

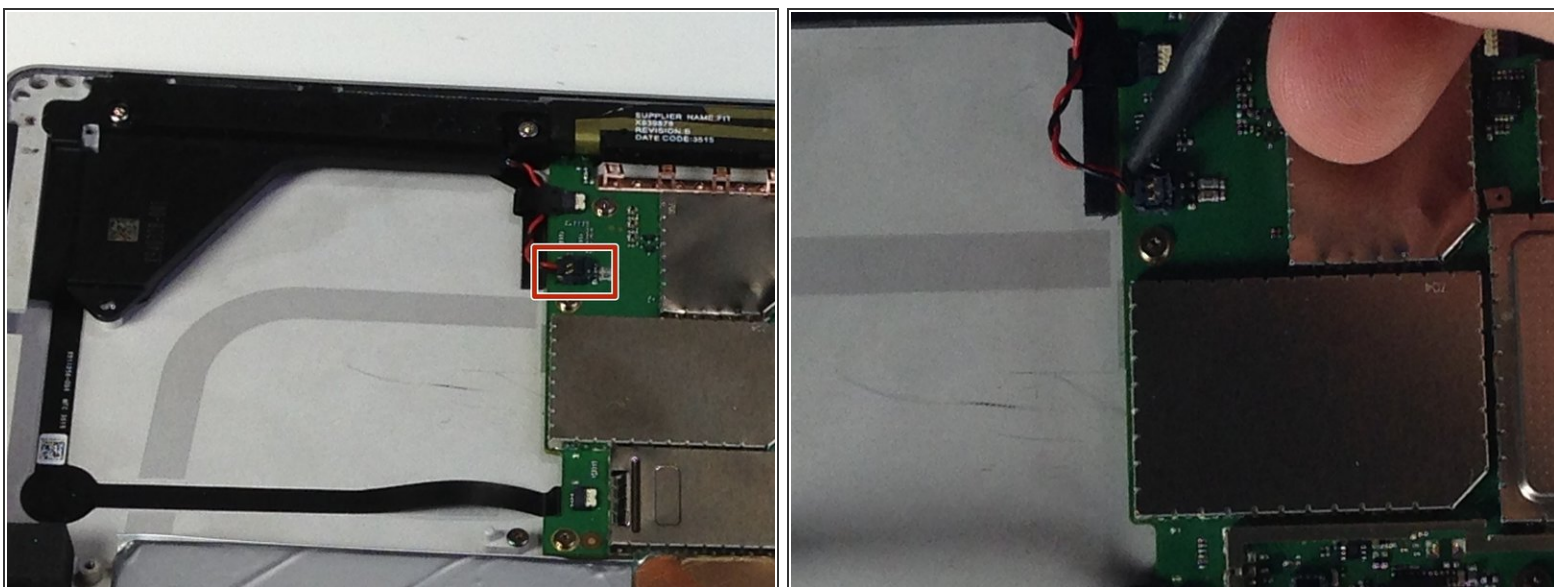
Step 12



- You can now remove entire heat sink by lifting it out with your hands.

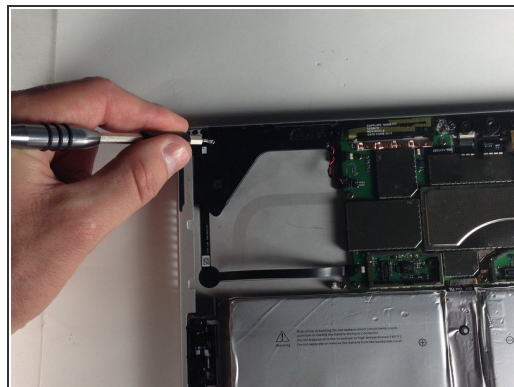
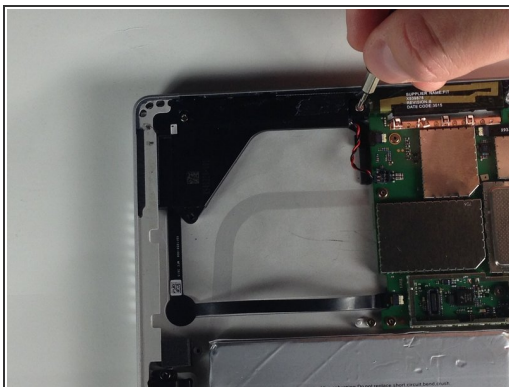
⚠ Be sure to [replace the thermal paste](#) when installing the heat sink.

Step 13 — Left Speaker



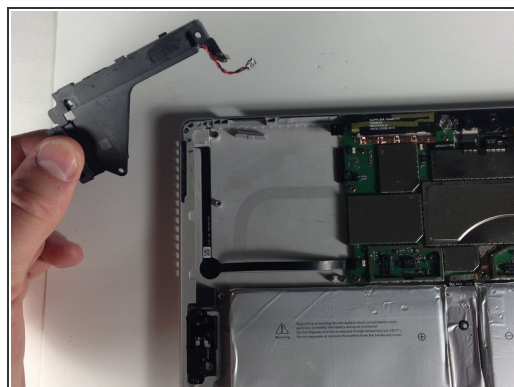
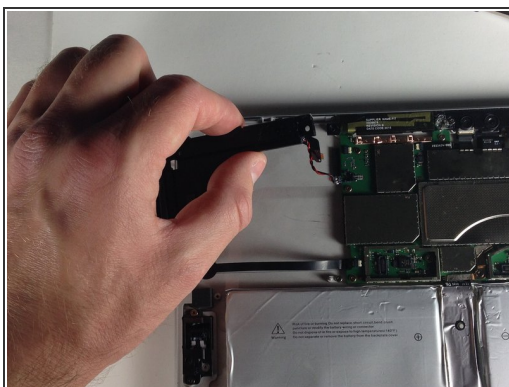
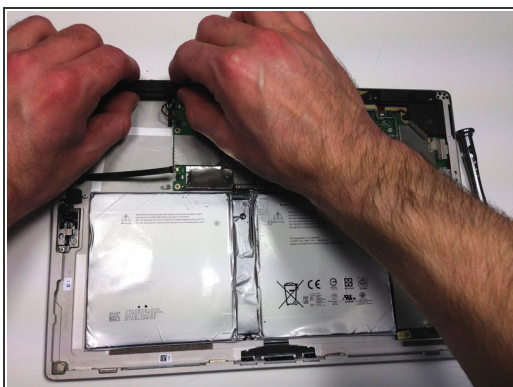
- Detach the speaker connector from the motherboard.

Step 14



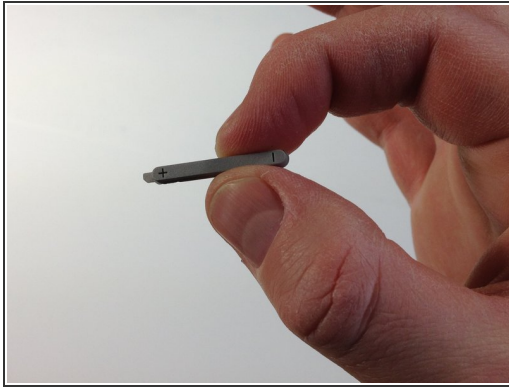
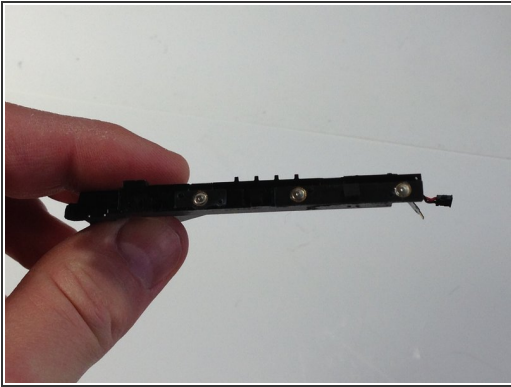
- Remove screws from the speaker.
- 2mm Torx T5 screw
- 3 mm Torx T5 screw

Step 15



- Work the speaker out with your fingers.
- ⓘ The speaker is still wedged tightly into the frame and is difficult to remove.

Step 16



- Remove the speaker, the volume button and the power button from the Surface Pro 4.

To reassemble your device, follow these instructions in reverse order.