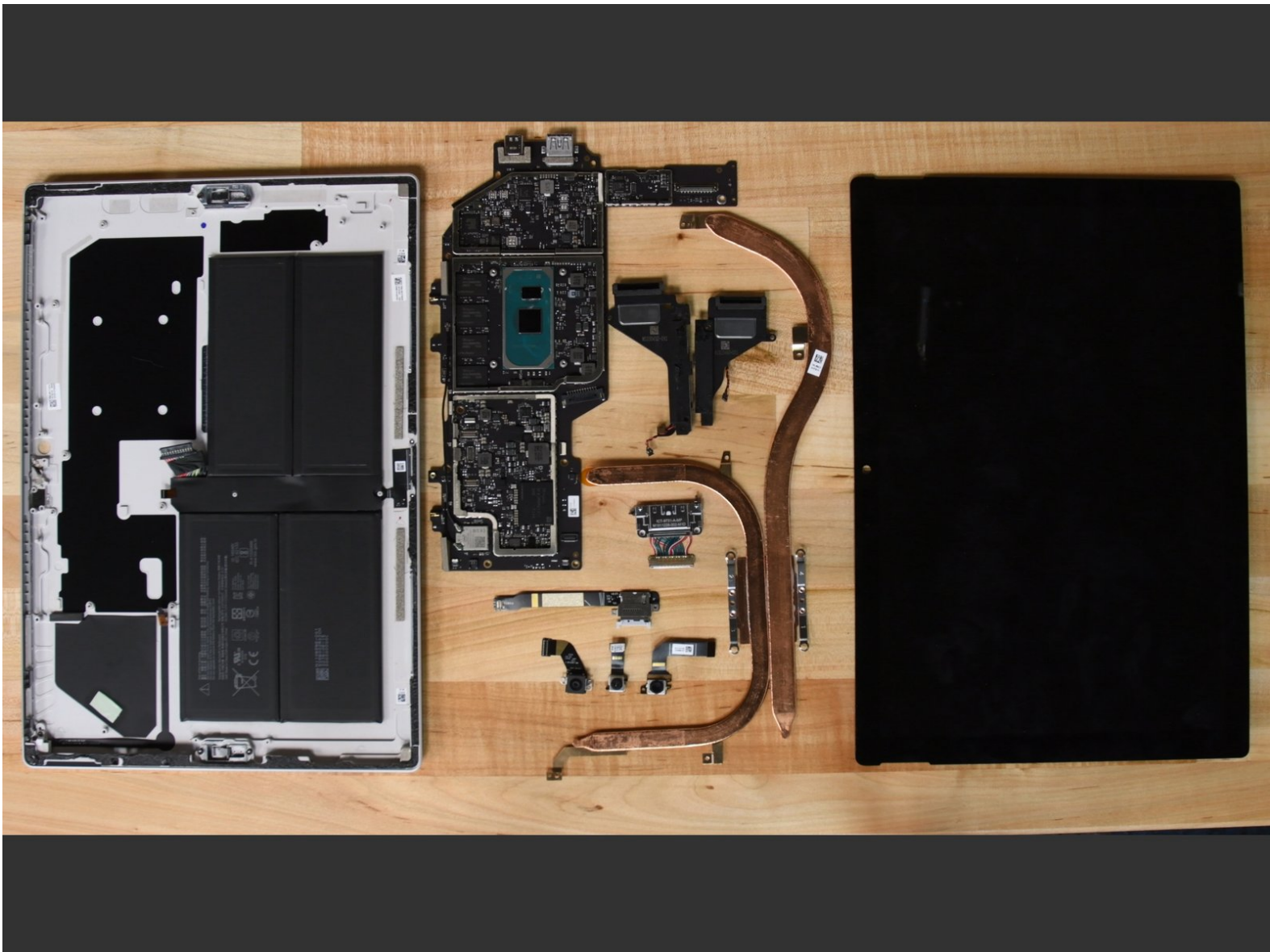




Microsoft Surface Pro 7 Teardown

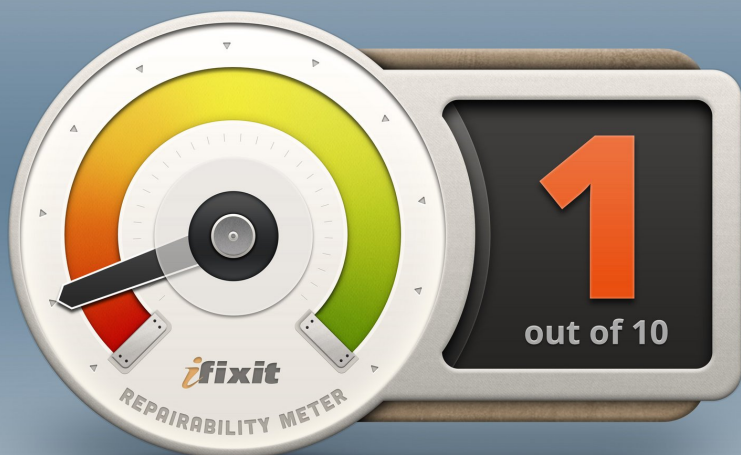
A teardown Microsoft's Surface Pro 7 performed on 11/12/2019.

Written By: Michael Degnan



Step 1 — Final Thoughts

REPAIRABILITY SCORE:



- To the extent that screws are used, they are all standard Torx fasteners.
- All repairs require first removing the display assembly—which is stubbornly glued in place, expensive, and prone to shattering.
- The battery is also firmly glued in place, requiring tons of heat and prying or solvents to remove.
- The RAM, SSD and CPU are all soldered to the motherboard. Replacing any of those components requires a full motherboard replacement.

To reassemble your device, follow these instructions in reverse order.