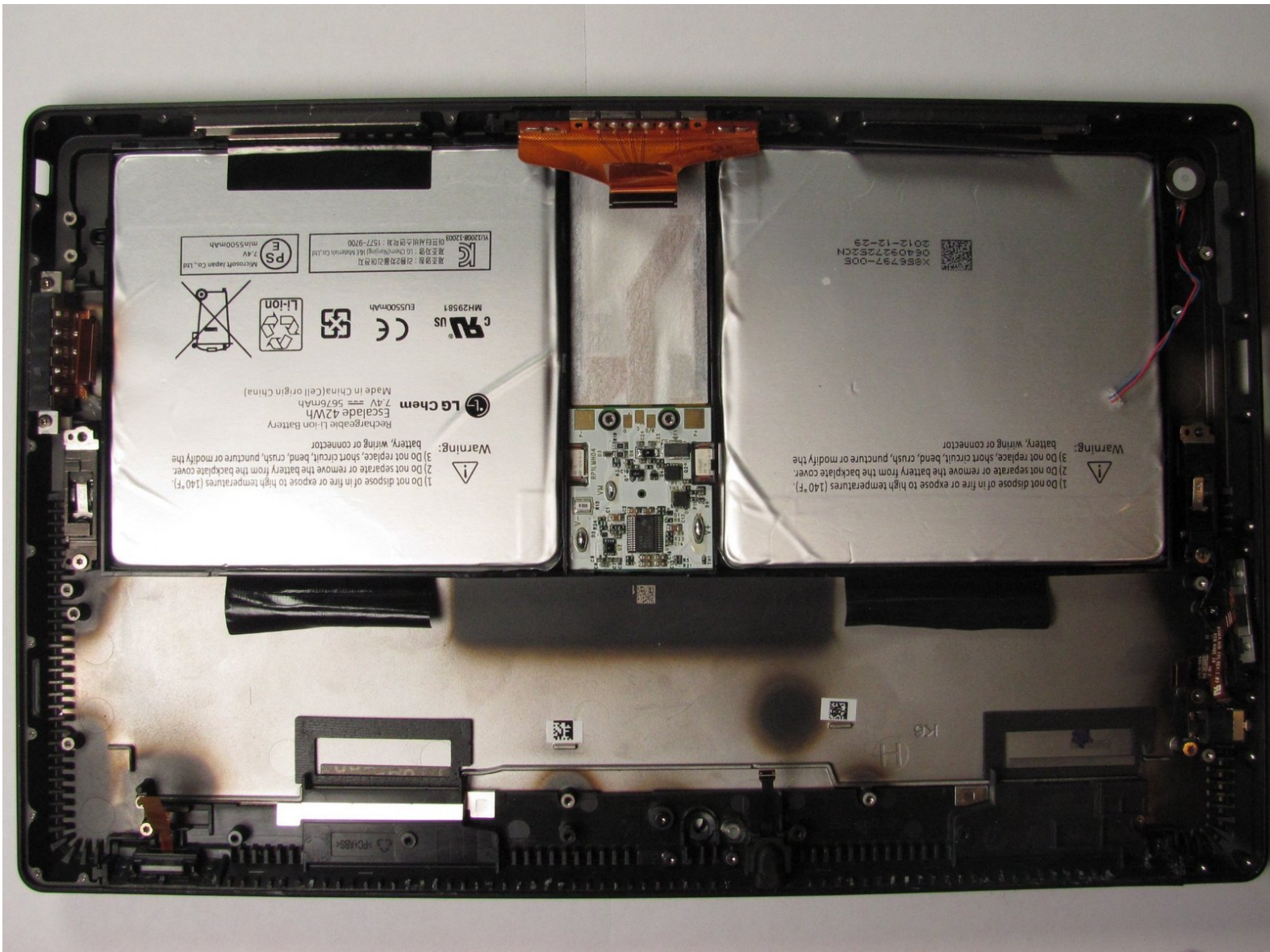




Microsoft Surface Pro Battery Replacement

Replace your dead battery to bring the power back to your device.

Written By: Jonathan Choi



INTRODUCTION

Use this guide to replace the battery pack in the Microsoft Surface Pro.

***In order to access the battery, refer to the Microsoft Surface Pro Teardown Guide to remove the screen and core components of the Surface Pro.**

[Teardown Guide](#)



TOOLS:

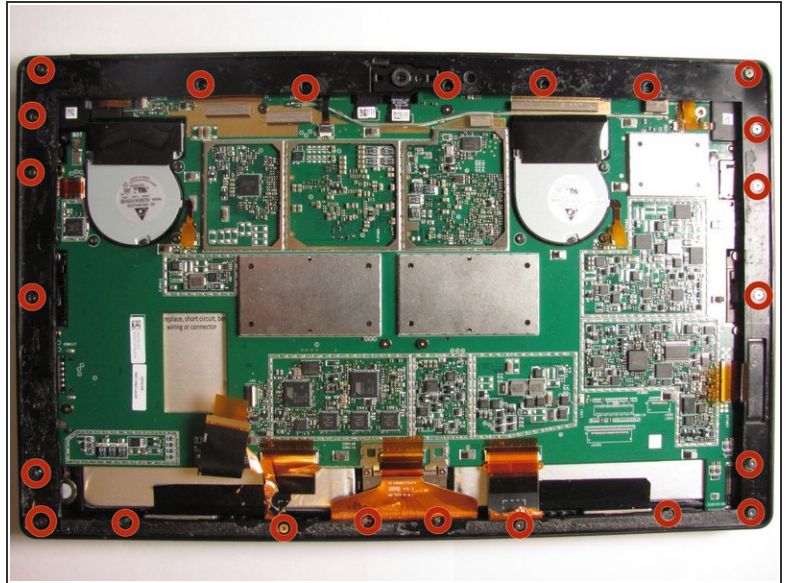
- [T5 Torx Screwdriver](#) (1)
- [Spudger](#) (1)
- [T2 Torx Screwdriver](#) (1)



PARTS:

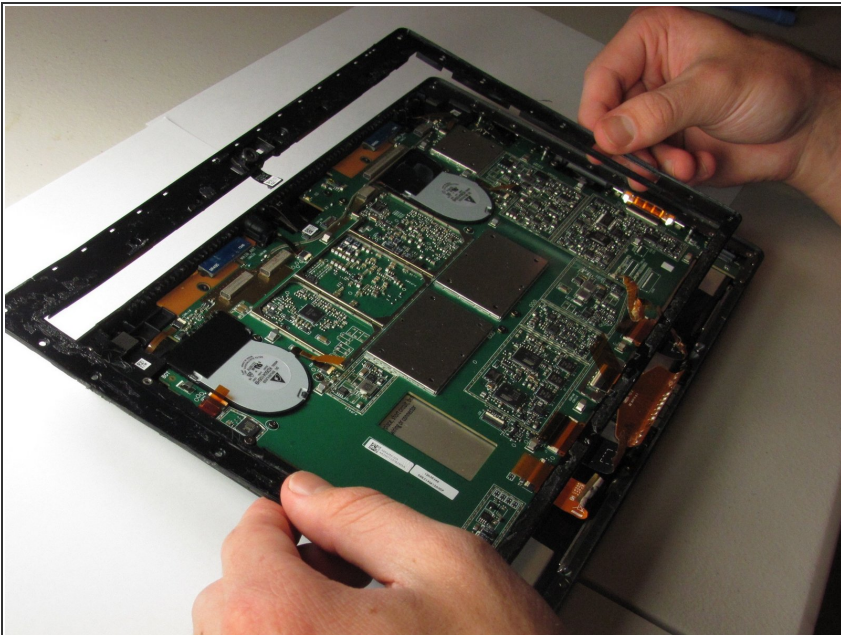
- [Surface Pro and Pro 2 Battery](#) (1)

Step 1 — Battery



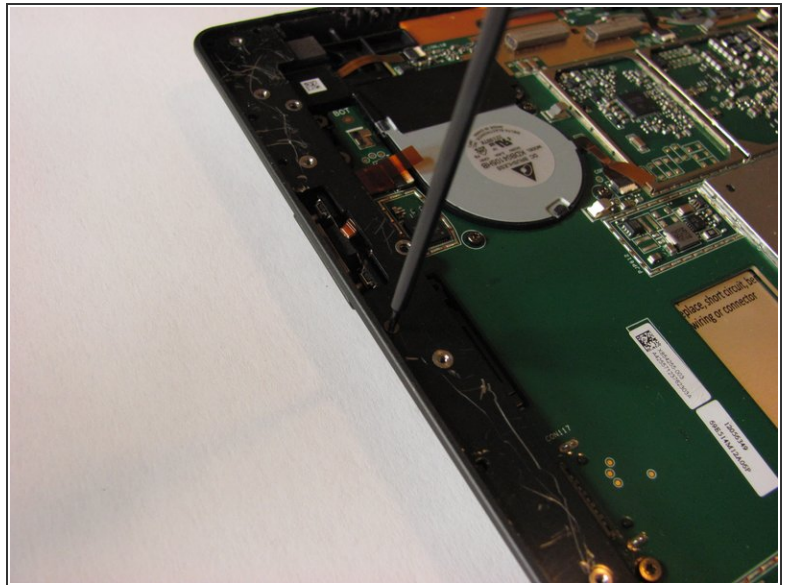
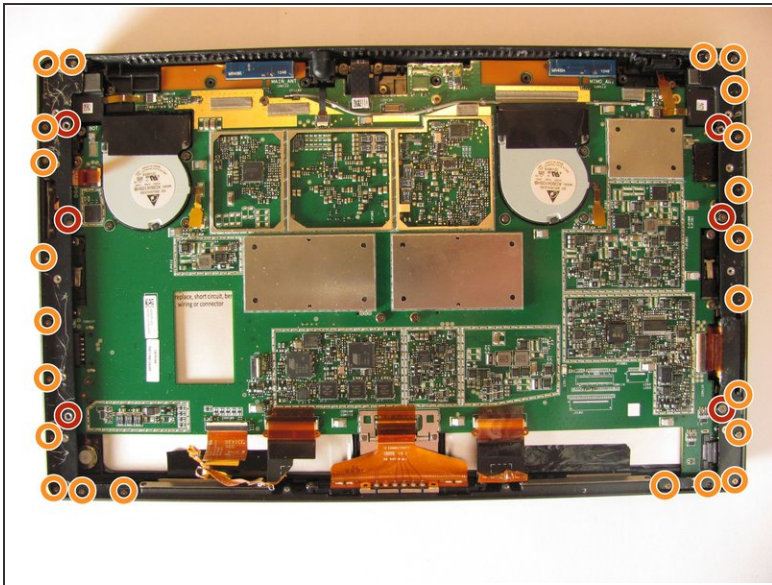
- Using a T3 Torx screwdriver, remove a total of 23 screws from the screen bezel of the Surface Pro.

Step 2



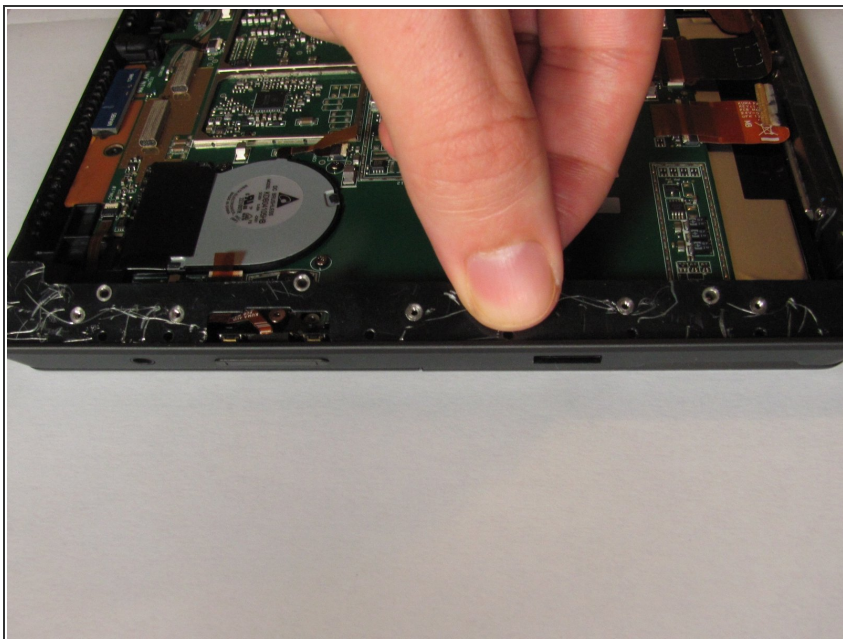
- Lift the screen bezel from the Surface Pro.

Step 3



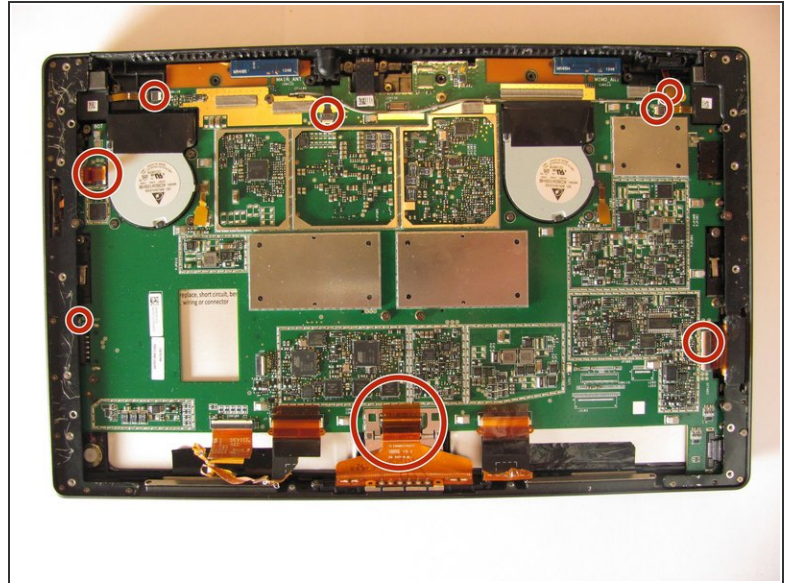
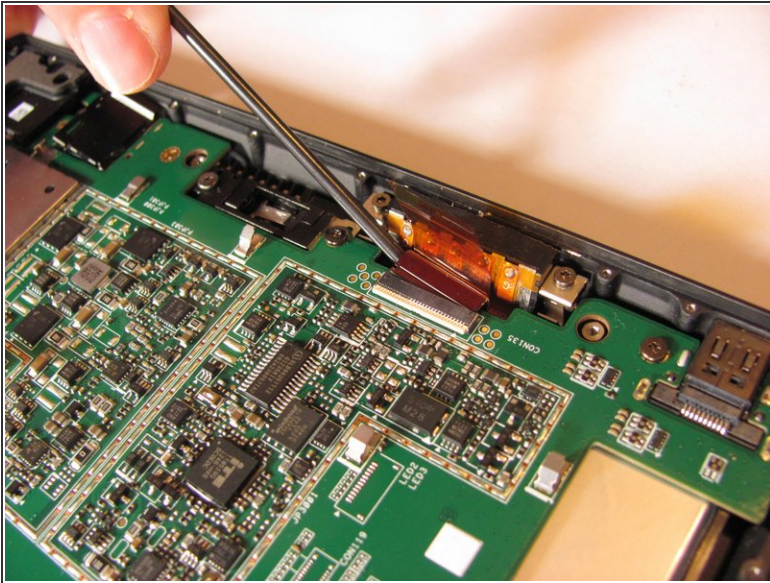
- Remove the 6 T5 screws from the panels on each side of the frame.
- Remove 23 T2 screws from the panels.

Step 4



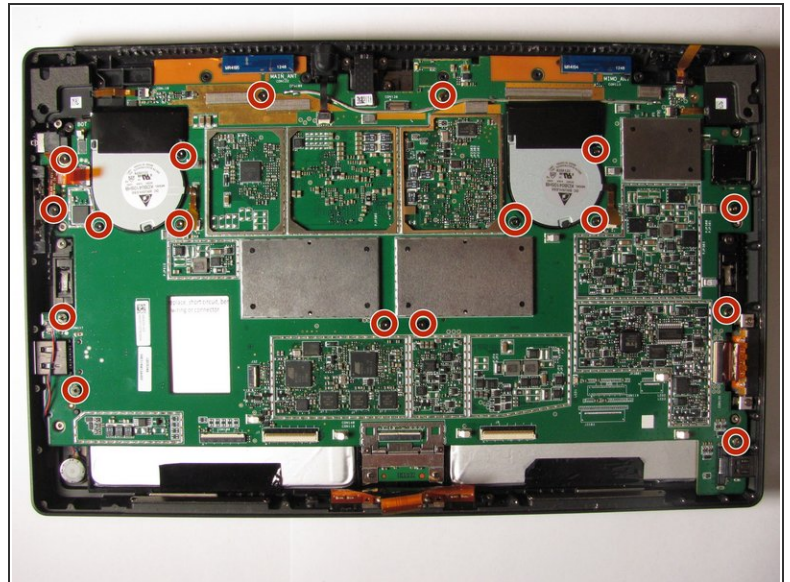
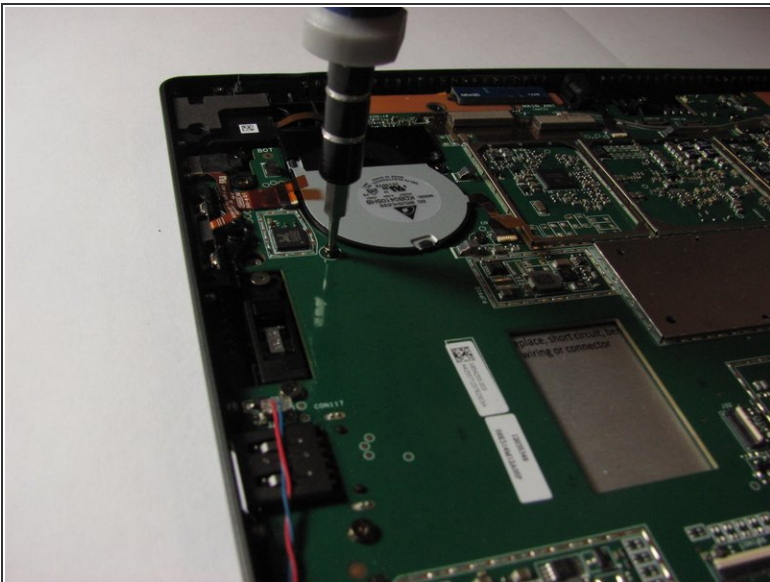
- Lift both metal panels from the frame.

Step 5



- Using tweezers, gently pull the eight orange ribbon cables from their sockets.

Step 6



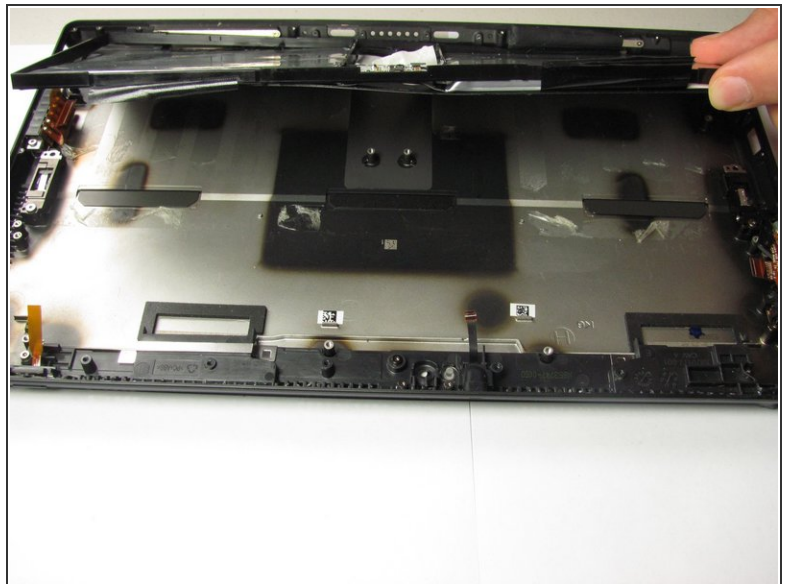
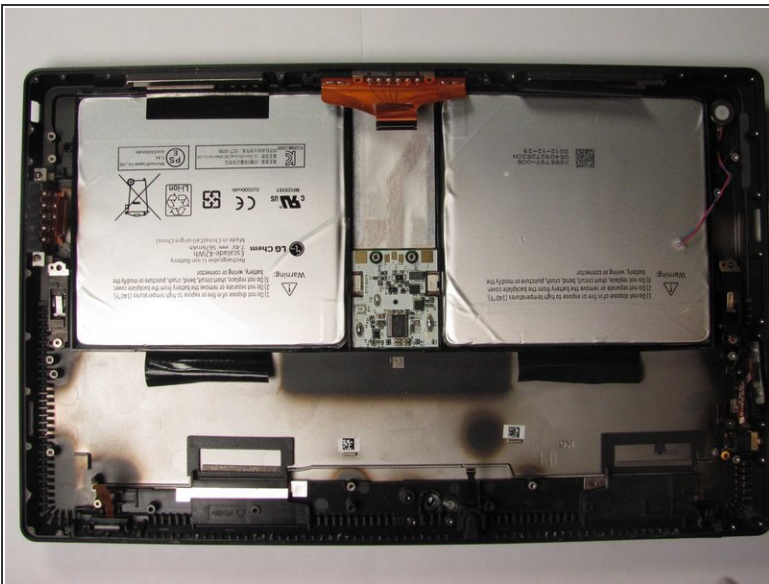
- Unscrew the 17 T5 torx screws on the motherboard with the T5 torx screw driver

Step 7



- Once all screws are removed, gently lift up the logic board with your hands to pull it out.

Step 8



- Use your hands to pry off the entire battery pack with enough force to overcome the glue keeping the batteries in place.

To reassemble your device, follow these instructions in reverse order.

This document was generated on 2019-10-09 07:54:22 AM (MST).

