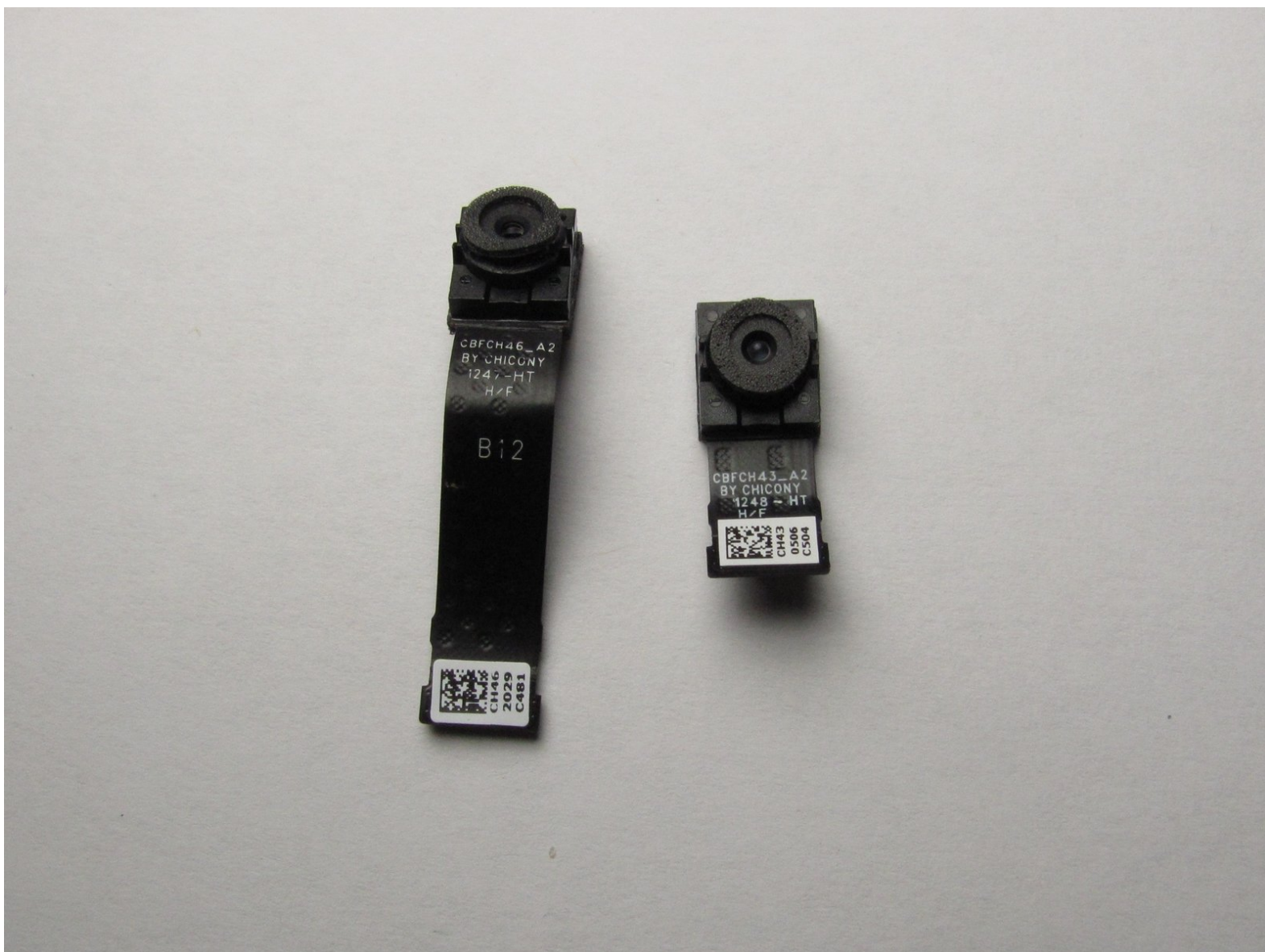




Microsoft Surface Pro Camera Replacement

This guide shows how to install both the front and rear cameras on the Surface Pro.

Written By: Jonathan Choi



INTRODUCTION

***In order to access the camera, refer to steps 1 - 5 in the Microsoft Surface Pro Teardown Guide to remove the screen.**

[Teardown Guide](#)



TOOLS:

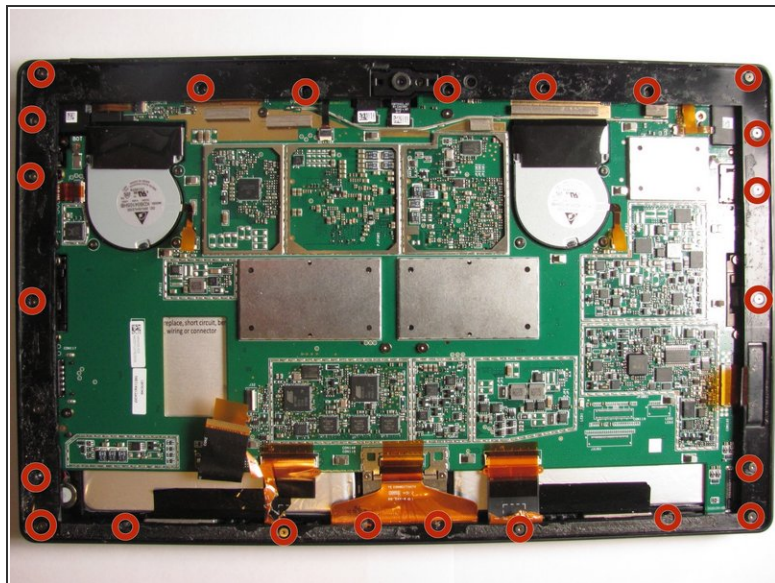
- [T5 Torx Screwdriver](#) (1)
- [iFixit Opening Tools](#) (1)
- [Spudger](#) (1)



PARTS:

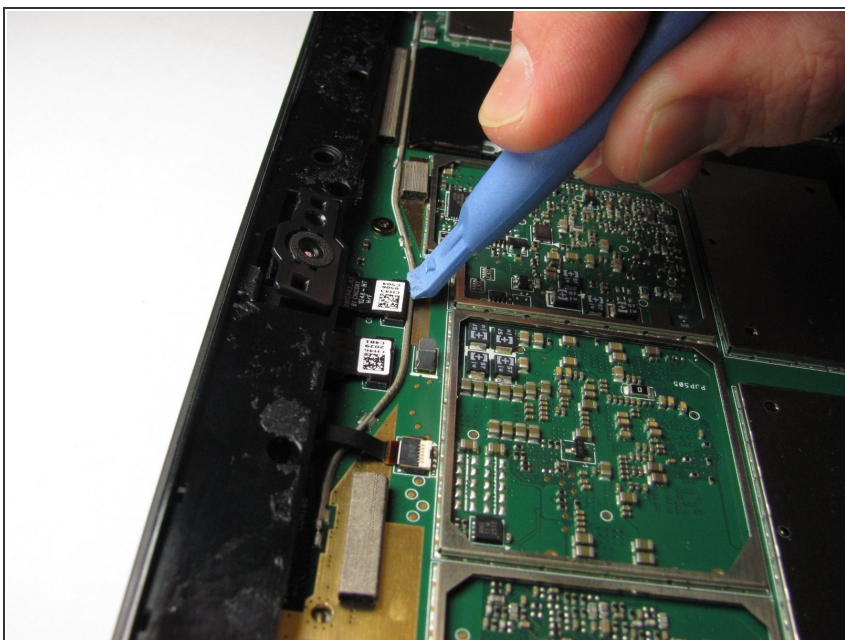
- [Surface Pro Front Facing Camera](#) (1)

Step 1 — Camera



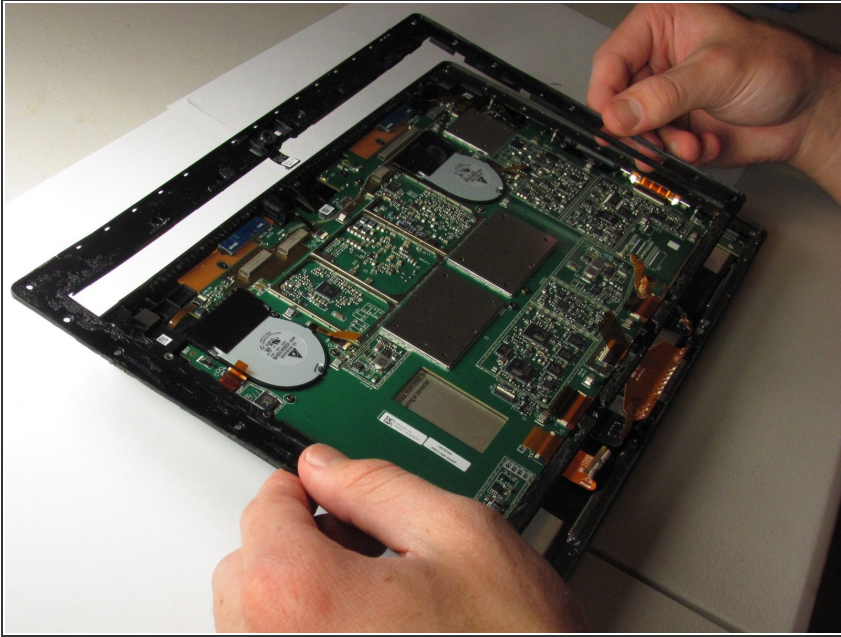
- Using a T5 Torx screwdriver, unscrew a total number of 23 screws located on the outside panel of the Surface Pro.

Step 2



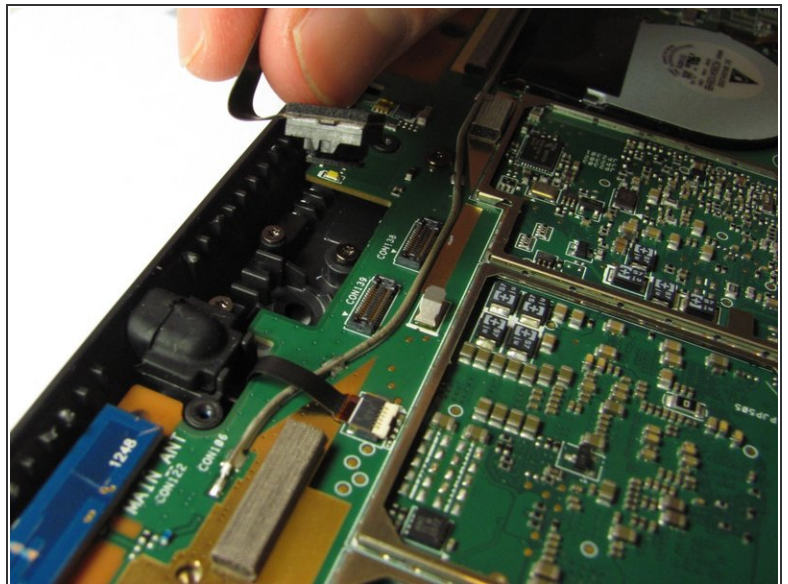
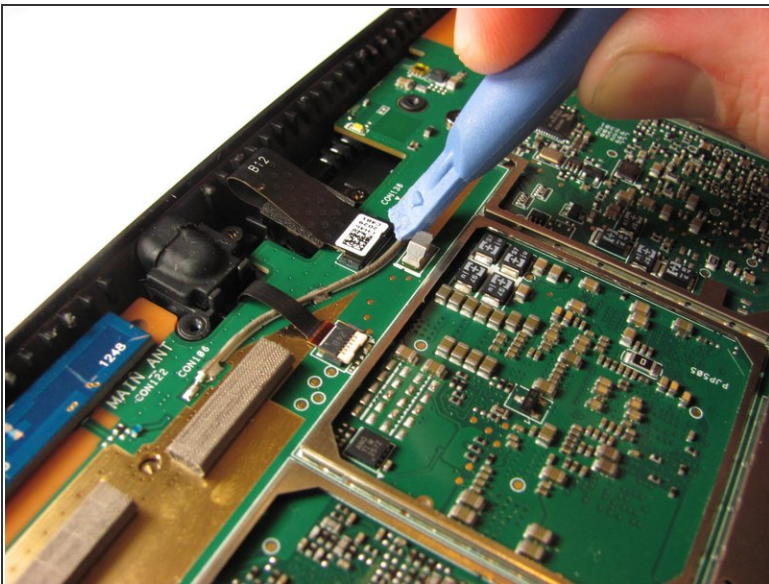
- Use the plastic opening tool or fingers to pry out the front camera.

Step 3



- Lift the outside panel from the Surface Pro.

Step 4



- Use the plastic opening tool to pry out the back camera.

To reassemble your device, follow these instructions in reverse order.